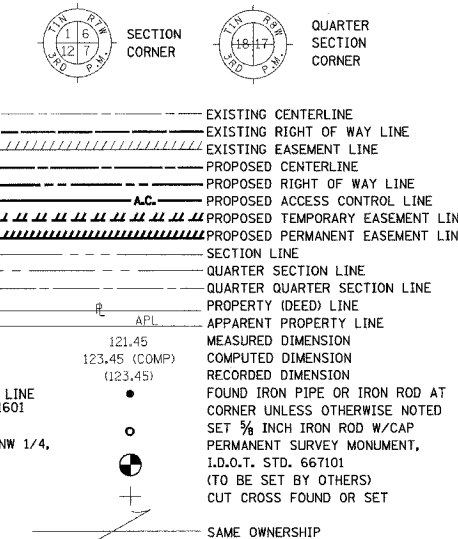


PART OF FRACTIONAL SECTION 7 IN T1S, R7W OF THE THIRD P.M., ST. CLAIR COUNTY, ILLINOIS

FAP ROUTE	SECTION	COUNTY	TOTAL SHEETS	SHEET NO
103	27-1R	ST. CLAIR	382	144
STA. 220+91.46		TO STA. 239+00.00		
FED. ROAD DIST. NO.		ILLINOIS	FED. AID PROJECT	

LEGEND



- ▲ SET CONCRETE SURVEY CONTROL MONUMENT
- STAKING OF PROPOSED RIGHT OF WAY. SET 5/8 INCH METAL ROD WITH DIVISION OF HIGHWAY SURVEY MARKER TO MONUMENT THE POSITION SHOWN, IDENTIFIED BY INSCRIPTION DATA AND SURVEYORS REGISTRATION NUMBER.
- STAKING OF PROPOSED RIGHT OF WAY IN CULTIVATED AREAS. SET 5/8 INCH METAL ROD WITH DIVISION OF HIGHWAY SURVEY MARKER 20 INCHES BELOW GROUND SURFACE TO MONUMENT THE POSITION SHOWN, IDENTIFIED BY INSCRIPTION DATA AND SURVEYORS REGISTRATION NUMBER.

STATE OF ILLINOIS)
) SS
 COUNTY OF)

THIS IS TO CERTIFY THAT I, RONALD G. BRIGHT AN ILLINOIS PROFESSIONAL LAND SURVEYOR, SURVEYED THE PLAT OF HIGHWAYS SHOWN HEREON IN U.S. SURVEYS NO. 382, 389, AND 772 AND IN SECTIONS 6, 7, 18, 19, 20, 29, AND 30, TOWNSHIP 1 SOUTH, RANGE 7 WEST, OF THE THIRD PRINCIPAL MERIDIAN, ST. CLAIR COUNTY, ILLINOIS, THAT THE SURVEY IS COMPLETE AS SHOWN TO THE BEST OF MY KNOWLEDGE AND BELIEF, THAT THE PLAT REPRESENTS SAID SURVEY, THAT ALL MONUMENTS FOUND AND ESTABLISHED ARE OF PERMANENT QUALITY AND OCCUPY THE POSITIONS SHOWN THEREON AND THAT THE MONUMENTS ARE SUFFICIENT TO ENABLE THE SURVEY TO BE RETRACED. MADE FOR THE DEPARTMENT OF TRANSPORTATION, STATE OF ILLINOIS.

DATED _____

RONALD G. BRIGHT, PLS #3157
 EXPIRES NOVEMBER 30, 2006

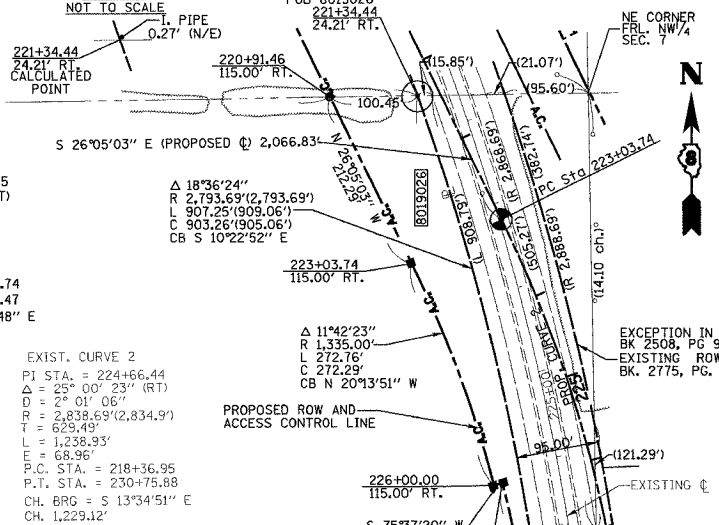
kdg KUHLMANN DESIGN GROUP, INC.
 15 E. WASHINGTON STREET
 BELLEVILLE, ILLINOIS 62220
 (618) 234-8898

ILLINOIS DEPARTMENT OF TRANSPORTATION
PLAT OF HIGHWAYS
 FAP ROUTE 103 (IL RTE. 13/15)
 SECTION 27-1R
 ST. CLAIR COUNTY
 JOB NO. R-98-019-00
 STATION 220+91.46 TO STATION 239+00.00



ILLINOIS DEPARTMENT OF TRANSPORTATION
 DIVISION OF HIGHWAYS/DISTRICT 8
 1102 EASTPORT PLAZA DRIVE
 COLLINGSVILLE, ILLINOIS 62234-6198

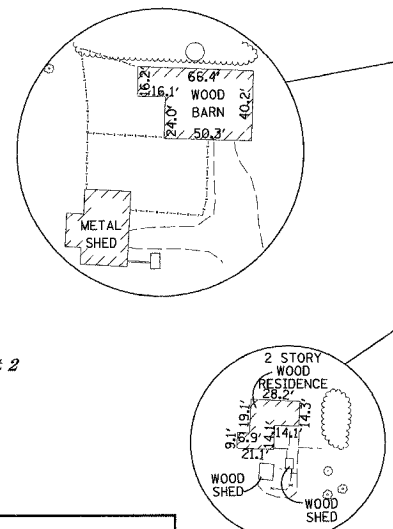
DETAIL



PROP. CURVE 2
 PI STA. = 226+25.75
 Δ = 25° 02' 29" (RT)
 D = 3° 57' 05"
 R = 1,450.00'
 T = 322.01'
 L = 633.73'
 E = 35.32'
 P.C. STA. = 223+03.74
 P.T. STA. = 229+37.47
 CH. BRG = S 13°33'48" E
 CH. = 628.70'

EXIST. CURVE 2
 PI STA. = 224+66.44
 Δ = 25° 00' 23" (RT)
 D = 2° 01' 06"
 R = 2,838.69'(2,834.9')
 T = 629.49'
 L = 1,238.93'
 E = 68.96'
 P.C. STA. = 218+36.95
 P.T. STA. = 230+75.88
 CH. BRG = S 13°34'51" E
 CH. = 1,229.12'

PT FRACTIONAL NW 14, SEC. 7
 Plat Book C PG.383
 Recorded September 2, 1870



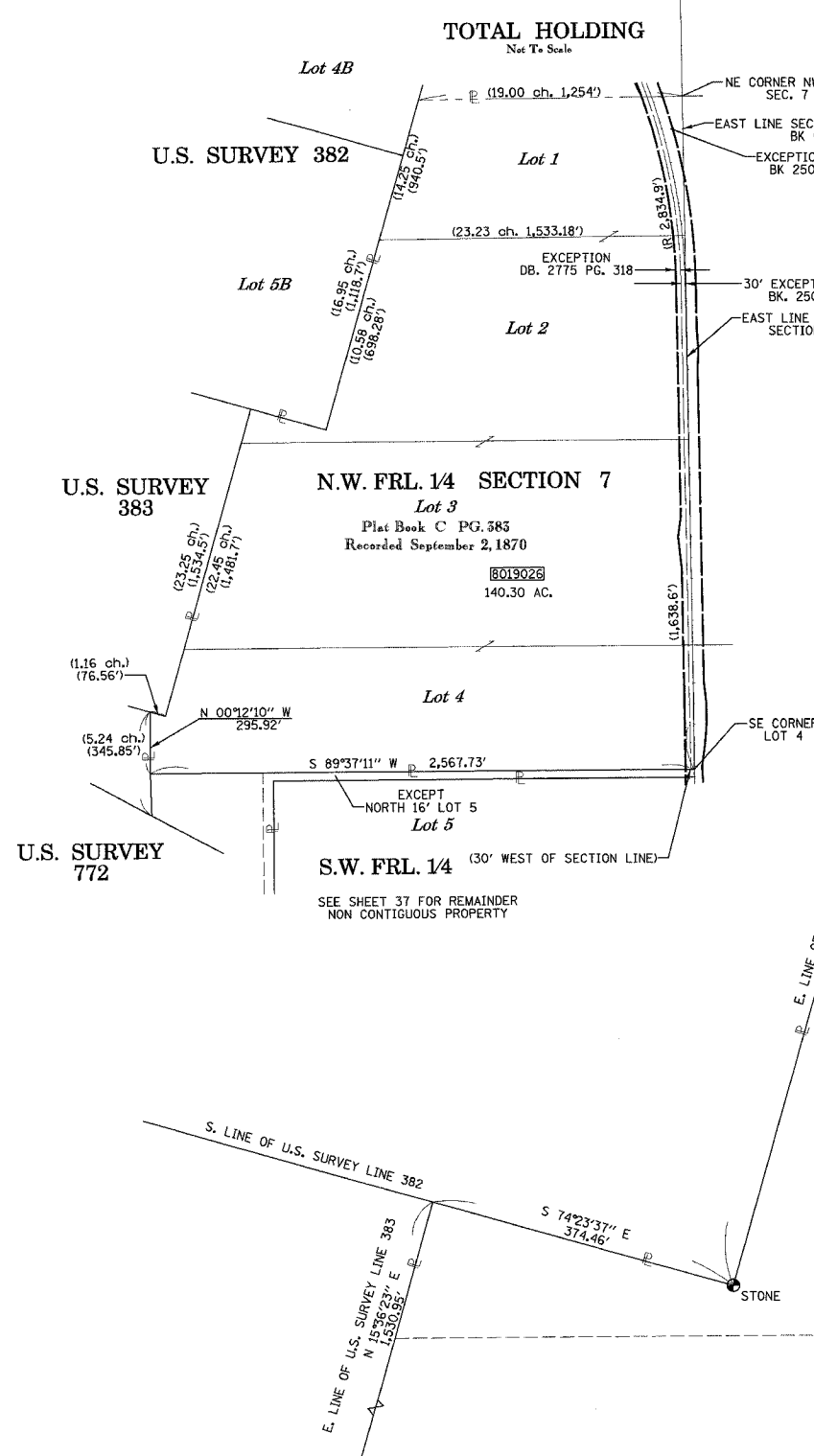
POINT OF DIRECT ACCESS - REFER TO NOTE A OR B

NOTE A:
 THE EXISTING DIRECT ACCESS ENTRANCE AT THE DESIGNATED STATION SHOWN HEREON SHALL REMAIN IN EFFECT AND OPERATION ONLY AS LONG AS THE ENTRANCE IS USED FOR FARMING PURPOSES FOR ONE OR MORE SINGLE FAMILY RESIDENCES, AND AS LONG AS THE ENTRANCE IS NOT USED FOR ACCESS TO A COMMERCIAL ENTERPRISE OTHER THAN FARMING.

NOTE B:
 A PROPOSED DIRECT ACCESS ENTRANCE SHALL BE PROVIDED AT THE DESIGNATED STATION SHOWN HEREON, THE ENTRANCE SHALL REMAIN IN EFFECT AND OPERATION ONLY AS LONG AS THE ENTRANCE IS USED FOR FARMING PURPOSES FOR ONE OR MORE SINGLE FAMILY RESIDENCES, AND AS LONG AS THE ENTRANCE IS NOT USED FOR ACCESS TO A COMMERCIAL ENTERPRISE OTHER THAN FARMING.

STATION	OFFSET	NORTH	EAST	PROP. ROW
220+91.46	115.00' RT.	655813.6769	2367439.6621	PROP. ROW
221+34.44	24.21' RT.	655814.9945	2367540.1042	EXIST. ROW
223+03.74	115.00' RT.	655623.0128	2367533.0016	PROP. ROW
223+03.74	0	655673.6774	2367636.2886	PROP. PC STA.
226+00.00	115.00' RT.	655367.5257	2367627.1588	PROP. ROW
226+00.00	105.00' RT.	655370.0088	2367636.8456	PROP. ROW
229+37.47	105.00' RT.	655060.5049	2367678.7483	PROP. ROW
229+37.47	0	655062.4158	2367783.7309	PROP. PT STA.
230+71.85	38.32' RT.	654927.3620	2367747.8690	EXIST. PT STA.
230+71.85	83.32' RT.	654926.5159	2367702.8673	EXIST. ROW
231+00.00	159.50' RT.	654897.0112	2367627.2150	PROP. ENT.
231+73.25	159.50' RT.	654823.7733	2367628.5481	PROP. ENT.
232+13.25	119.50' RT.	654784.5078	2367669.2694	PROP. ENT.
232+13.25	0	654786.6820	2367788.7500	PROP. ENT.
236+46.88	82.97' RT.	654351.6186	2367713.6823	EXIST. ROW
236+46.87	37.97' RT.	654352.4460	2367758.6750	EXIST. POT. STA.

NOTES:
 1. BEARINGS AND COORDINATES SHOWN HEREON ARE BASED ON SURVEY CONTROL DATA PROVIDED BY THE IL. DEPARTMENT OF TRANSPORTATION.
 2. TOPOGRAPHY AS SHOWN SUPPLIED BY IL. DEPARTMENT OF TRANSPORTATION, DISTRICT 8 COLLINGSVILLE, IL.



PARCEL NO.	OWNER	BOOK & PAGE	TOTAL HOLDING ACRES	FEE SIMPLE ACQUISITION			REMAINDER	EASEMENTS		PERMANENT TAX NUMBER	PROPERTY ACQUIRED BY
				GROSS ACRES	PREVIOUSLY DEDICATED ACRES	NET ACRES		PE - PERMANENT ACRES	EASEMENT PURPOSE		
8019026	ALICE D. CLASSEN, LTD. TITLE REPORT NO. SC-2845	BK 2508 PG 957	140.30 ACRES	2.8109	122.441	N/A	2.8109	122.441	137.4891 ACRES TE-A 0.2927 TE-B 6.6333	14-07-0-100-003 14-07-0-300-001	

3/9/2005 6:16:16 PM J:\2002\2021\89\0001\cd\midg\m\pl_03_27.dgn