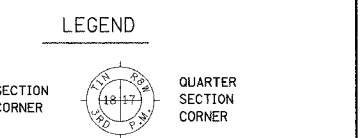
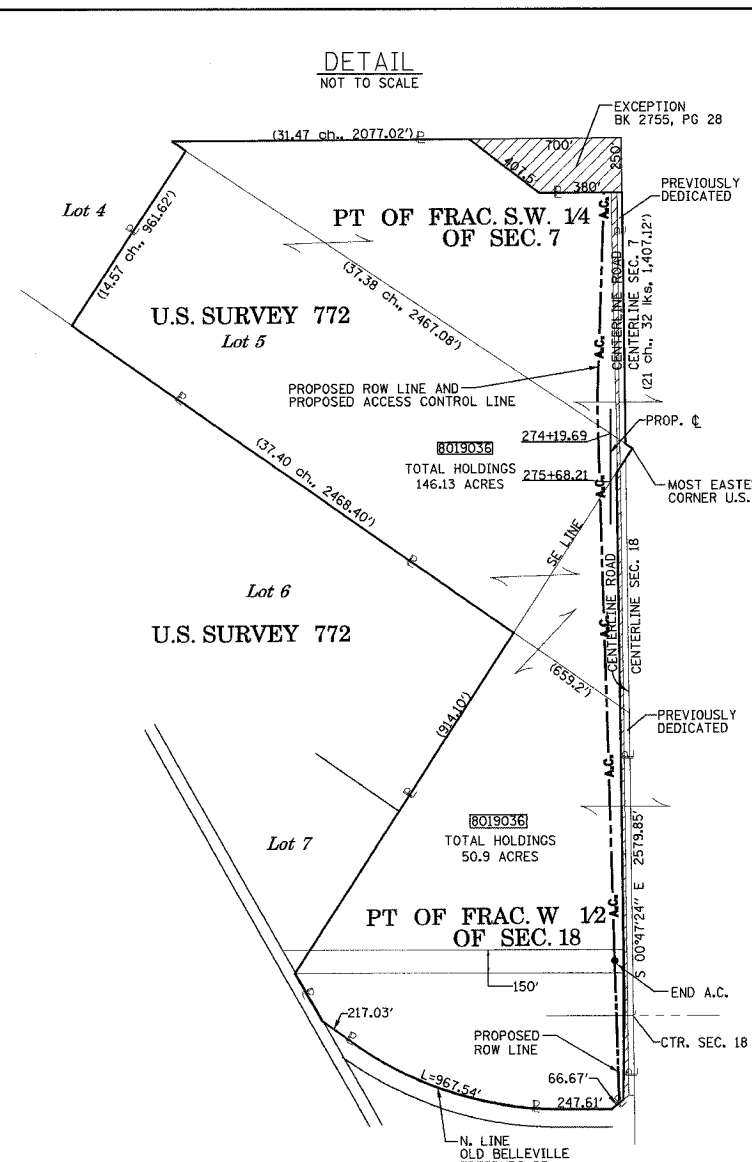


SECTION	COUNTY	TOTAL SHEETS	SHEET NO.
27-1R	ST. CLAIR	382	154



PART OF W 1/2 OF THE FRACTIONAL OF SECTION 18 IN T1S, R7W OF THE THIRD P.M., ST. CLAIR COUNTY, ILLINOIS



PROP. CURVE 5
 PI STA. = 286+27.74
 $\Delta = 2^\circ 57' 38''$ (LT)
 $D = 1^\circ 31' 07''$
 $R = 3,773.00'$
 $T = 97.50'$
 $L = 194.95'$
 $E = 1.26'$
 P.C. STA. = 285+30.24
 P.T. STA. = 287+25.20
 CH. BRG = $S 02^\circ 14' 03'' E$
 CH. = 194.93'

Arden Weiss, as successor Trustee under the Last Will and Testament of Oscar Weiss, as to a two-thirds (2/3) undivided interest; and Arden Weiss, as successor Trustee under the Will and Testament of Flora Weiss, as to a one-third (1/3) undivided interest
 BK 3973, PG 2118

PROP. CURVE 6
 PI STA. = 293+68.90
 $\Delta = 2^\circ 57' 12''$ (RT)
 $D = 1^\circ 29' 15''$
 $R = 3,852.00'$
 $T = 99.30'$
 $L = 198.55'$
 $E = 1.28'$
 P.C. STA. = 292+69.61
 P.T. STA. = 294+68.15
 CH. BRG = $S 02^\circ 14' 16'' E$
 CH. = 198.53'

POINT OF DIRECT ACCESS - REFER TO NOTE A OR B

NOTE A:
 THE EXISTING DIRECT ACCESS ENTRANCE AT THE DESIGNATED STATION SHOWN HEREON SHALL REMAIN IN EFFECT AND OPERATION ONLY AS LONG AS THE ENTRANCE IS USED FOR FARMING PURPOSES FOR ONE OR MORE SINGLE FAMILY RESIDENCES, AND AS LONG AS THE ENTRANCE IS NOT USED FOR ACCESS TO A COMMERCIAL ENTERPRISE OTHER THAN FARMING.

NOTE B:
 A PROPOSED DIRECT ACCESS ENTRANCE SHALL BE PROVIDED AT THE DESIGNATED STATION SHOWN HEREON, THE ENTRANCE SHALL REMAIN IN EFFECT AND OPERATION ONLY AS LONG AS THE ENTRANCE IS USED FOR FARMING PURPOSES FOR ONE OR MORE SINGLE FAMILY RESIDENCES, AND AS LONG AS THE ENTRANCE IS NOT USED FOR ACCESS TO A COMMERCIAL ENTERPRISE OTHER THAN FARMING.

COORDINATE TABLE				
STATION	OFFSET	NORTH	EAST	EXIST. ROW
275+78.66	6.95' RT.	650423.6354	2367772.6679	EXIST. ROW
277+33.70	110.00' RT.	650267.2599	2367671.6623	PROP. ROW
282+00.00	110.00' RT.	649800.9960	2367677.7971	PROP. ROW
285+30.24	0	649472.2272	2367792.1323	PROP. P.C.
285+94.71	86.77' RT.	649405.1545	2367707.7968	PROP. ROW
287+25.20	0	649277.4432	2367799.7311	PROP. P.T.
291+00.00	80.00' RT.	648898.2463	2367744.1795	PROP. ROW
292+50.00	95.00' RT.	648747.5897	2367738.9283	PROP. ROW
292+69.61	0	648734.1783	2367834.9989	PROP. P.C.
294+68.15	0	648535.8040	2367842.7504	PROP. P.T.
294+68.15	95.00' RT.	648534.5421	2367747.7588	PROP. ROW

* SEE SHEET (38) FOR 8019036B DETAIL
 * SEE NOTE A FOR (ACCESS CONTROL)

PARCEL NO.	OWNER	BOOK & PAGE	TOTAL HOLDING ACRES	FEE SIMPLE ACQUISITION				REMAINDER ACRES	EASEMENTS		PERMANENT TAX NUMBER	PROPERTY ACQUIRED BY	
				PREVIOUSLY DEDICATED		NET			PE = PERMANENT	TE = TEMPORARY			
ACRES	ACRES	SO. FT.	ACRES	SO. FT.	ACRES	SO. FT.	ACRES	ACRES	SO. FT.				
8019036	ARDEN WEISS, AS SUCCESSOR TRUSTEE UNDER THE LAST WILL AND TESTAMENT OF OSCAR WEISS, AS TO A TWO-THIRDS (2/3) UNDIVIDED INTEREST; AND ARDEN WEISS, AS SUCCESSOR TRUSTEE UNDER THE LAST WILL AND TESTAMENT OF FLORA WEISS, AS TO A ONE-THIRD (1/3) UNDIVIDED INTEREST. TITLE REPORT NO. SC-2890, SC-2891.	BK 3973 PG 2118	146.1059	A=6.4589 B=3.0922	A=281,350 B=134,693	B=3.0922 B=134,693	A=6.4589 B=0	A=281,350 B=0	136.5548	TE-A 0.1240 TE-B 0.0057	TE-A 5,400 TE-B 250	GRAVING & ENTRANCE CONSTRUCTION	14-18-0-100-006 14-18-0-100-007 14-18-0-100-008 14-18-0-300-009 14-07-0-100-010 14-18-0-300-009

kdg KUHLMANN DESIGN GROUP, INC.
 15 E. WASHINGTON STREET
 BELLEVILLE, ILLINOIS 62220
 (618) 234-8898

**ILLINOIS DEPARTMENT OF TRANSPORTATION
 PLAT OF HIGHWAYS**

FAP ROUTE 103 (IL RTE. 13/15)
 SECTION 27-1R
 ST. CLAIR COUNTY
 JOB NO. R-98-019-00

STATION 275+78.66 TO STATION 296+00.00

SCALE: 1" = 100'

SHEET 37 OF 68

ILLINOIS DEPARTMENT OF TRANSPORTATION
 DIVISION OF HIGHWAYS/DISTRICT 8
 1102 EASTPORT PLAZA DRIVE
 COLLINGSVILLE, ILLINOIS 62234-6198

NOTES:
 1. BEARINGS AND COORDINATES SHOWN HEREON ARE BASED ON SURVEY CONTROL DATA PROVIDED BY THE IL. DEPARTMENT OF TRANSPORTATION.
 2. TOPOGRAPHY AS SHOWN SUPPLIED BY IL. DEPARTMENT OF TRANSPORTATION, DISTRICT 8 COLLINGSVILLE, IL.

3/9/2005 6:16:51 PM I:\2002\020189\0001\civil\dwg\plm_103_37.dgn