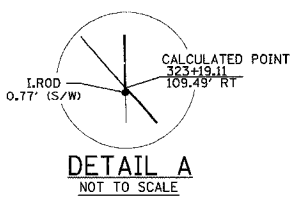
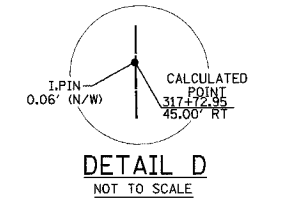
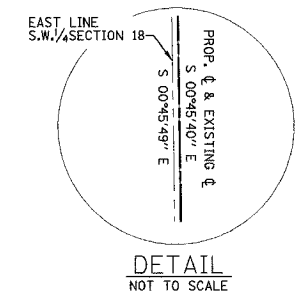
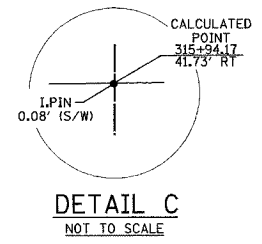
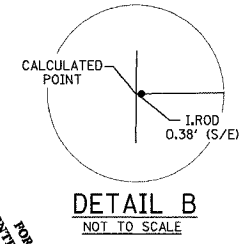
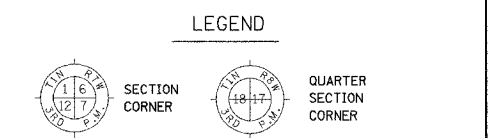


TWP	SECTION	COUNTY	TOTAL SHEETS	SHEET NO.
103	27-1R	ST. CLAIR	382	158
STA. 313+20.37 TO STA. 323+19.11				
FED. ROAD DIST. NO.		ILLINOIS	FED. AID PROJECT	

**PART OF THE SW 1/4 OF FRACTIONAL SECTION 18 IN T15S,R7W OF THE THIRD P.M., ST. CLAIR COUNTY, ILLINOIS**

PROP. CURVE 7  
 PI STA. = 322+94.62  
 $\Delta = 39^\circ 37' 19''$  (LT)  
 $D = 3^\circ 57' 23''$   
 $R = 1,448.14'$   
 $T = 521.68'$   
 $L = 1,001.44'$   
 $E = 91.10'$   
 P.C. STA. = 317+72.95  
 P.T. STA. = 327+74.39  
 CH. BRG = S 20°34'19" E  
 CH. = 981.60'

EXIST. CURVE 3  
 PI STA. = 322+94.63  
 $\Delta = 39^\circ 37' 19''$  (LT)  
 $D = 3^\circ 57' 23''$   
 $R = 1,448.14'$   
 $T = 521.68'$   
 $L = 1,001.44'$   
 $E = 91.10'$   
 P.C. STA. = 317+72.95  
 P.T. STA. = 327+74.39  
 CH. BRG = S 20°34'19" E  
 CH. = 981.60'



SW 1/4 OF FRAC. SEC. 18

STATION	OFFSET	NORTH	EAST	
313+20.37	43.59' RT.	646683.1746	2367823.7642	EXIST. ROW
313+20.37	65.00' RT.	646682.8903	2367802.3588	PROP. ROW
315+00.00	40.00' RT.	646503.6081	2367829.7425	EXIST. ROW
315+94.17	41.73' RT.	646409.4236	2367829.2684	EXIST. ROW
315+94.17	65.00' RT.	646409.1144	2367805.9957	PROP. ROW
317+72.95	0	646231.2142	2367873.3645	PROP. PC
317+72.95	45.00' RT.	646230.6165	2367828.3685	EXIST. ROW
317+72.95	75.00' RT.	646230.2182	2367798.3712	PROP. ROW
318+57.19	75.00' RT.	646141.7022	2367802.1240	PROP. ROW
318+58.89	45.00' RT.	646142.1014	2367832.1730	EXIST. ROW
321+29.28	45.00' RT.	645867.5366	2367878.1703	EXIST. ROW
322+29.22	75.00' RT.	645759.2536	2367879.6135	PROP. ROW
323+19.11	109.49' RT.	645657.6396	2367880.9678	EXIST. ROW

PARCEL NO.	OWNER	BOOK & PAGE	TOTAL HOLDING ACRES	GROSS		PREVIOUSLY DEDICATED		NET		REMAINDER	EASEMENTS		PERMANENT TAX NUMBER	PROPERTY ACQUIRED BY
				ACRES	SQ. FT.	ACRES	SQ. FT.	ACRES	SQ. FT.		PERMANENT	TEMPORARY		
8019042	JEFFERY B. RIESS & LORNA J. RIESS AS TRUSTEES OF THE LORNA J. RIESS TRUST TITLE REPORT NO. SC-2854.03	BK 3259 PG 1233	1.9337	0.1478	6,440	N/A	N/A	0.1478	6,440	1.7859	TE 0.0161	TE 700	14-18-0-300-023	
8019044	DAVID E. SCHNEIDEWIND, AS TRUSTEE UNDER THE PROVISIONS OF A TRUST DATED JUNE 17, 1992, AND KNOWN AS THE DAVID G. SCHNEIDEWIND REVOCABLE TRUST TITLE REPORT NO. SC-4527, SC-4526	BK 3452 PG 1883	1.9199	0.1703	7,420	N/A	N/A	0.1703	7,420	1.7496	N/A	N/A	14-18-0-376-001 14-18-0-376-002	
8019046	ESTATE OF RAYMOND H. SWEAR, DECEASED TITLE REPORT NO. SC-2854.01	BK 2478 PG 594	1.9125	0.2322	10,114	N/A	N/A	0.2322	10,114	1.6803	TE 0.0152	TE 662	14-18-0-300-021	

NOTES:  
 1. BEARINGS AND COORDINATES SHOWN HEREON ARE BASED ON SURVEY CONTROL DATA PROVIDED BY THE ILL. DEPARTMENT OF TRANSPORTATION.  
 2. TOPOGRAPHY AS SHOWN SUPPLIED BY ILL. DEPARTMENT OF TRANSPORTATION, DISTRICT 8 COLLINSVILLE, IL.  
 3. MRKB = MONUMENT AND RECORD BOOK.

**Kuhlmann Design Group, Inc.**  
 15 E. WASHINGTON STREET  
 BELLEVILLE, ILLINOIS 62220  
 (618) 234-8898

ILLINOIS DEPARTMENT OF TRANSPORTATION  
**PLAT OF HIGHWAYS**  
 FAP ROUTE 103 (IL RTE. 13/15)  
 SECTION 27-1R  
 ST. CLAIR COUNTY  
 JOB NO. R-98-019-00

STATION 313+20.37 TO STATION 323+19.11

SCALE: 1" = 50'

ILLINOIS DEPARTMENT OF TRANSPORTATION  
 DIVISION OF HIGHWAYS/DISTRICT 8  
 1102 EASTPORT PLAZA DRIVE  
 COLLINSVILLE, ILLINOIS 62234-6198