

| DIST. NO.           | SECTION | COUNTY            | TOTAL SHEETS     | SHEET NO. |
|---------------------|---------|-------------------|------------------|-----------|
| 103                 | 27-1R   | ST. CLAIR         | 382              | 160       |
| STA. 327+12.42      |         | TO STA. 337+63.77 |                  |           |
| FED. ROAD DIST. NO. |         | ILLINOIS          | FED. AID PROJECT |           |

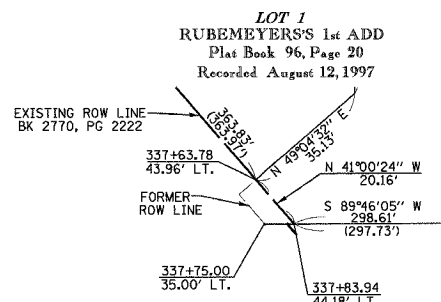
**PART OF THE NW 1/4 OF THE NE 1/4 OF SECTION 19, AND PART OF THE SW 1/4 OF THE SE 1/4 OF SECTION 18, T1S, R7W OF THE THIRD P.M., ST. CLAIR COUNTY, ILLINOIS**

SEE SHEET 42

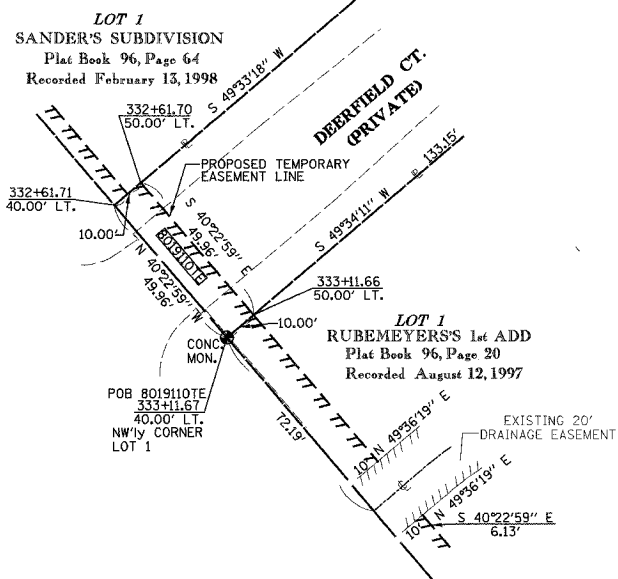
**PROP. CURVE 1**  
 PI STA. = 322+94.62  
 $\Delta = 39^\circ 37' 19''$  (LT)  
 D = 3° 57' 23"  
 R = 1,448.14'  
 T = 521.68'  
 L = 1,001.44'  
 E = 91.10'  
 P.C. STA. = 317+72.95  
 P.T. STA. = 327+74.39  
 CH. BRG = S 20°34'19" E  
 CH. 981.60'

**EXIST. CURVE 3**  
 $\Delta = 39^\circ 37' 20''$  (LT)  
 PI STA. = 322+94.63  
 D = 3° 57' 23"  
 R = 1,448.14'  
 T = 521.68'  
 L = 1,001.44'  
 E = 91.10'  
 P.C. STA. = 317+72.95  
 P.T. STA. = 327+74.39  
 CH. BRG = S 20°34'19" E  
 CH. 981.60'

**DETAIL B**  
NOT TO SCALE



**DETAIL A**  
NOT TO SCALE



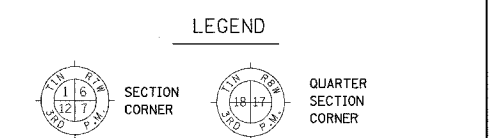
| STATION   | OFFSET     | NORTH       | EAST         | EXIST. ROW     |
|-----------|------------|-------------|--------------|----------------|
| 327+12.42 | 40.00' LT  | 645384.8406 | 2368210.7106 | EXIST. ROW     |
| 327+74.39 | 0          | 645312.0846 | 2368218.2852 | PROP. PT. STA. |
| 327+74.49 | 40.00' LT. | 645338.0446 | 2368248.8211 | EXIST. ROW     |
| 331+00.32 | 40.00' LT. | 645089.8505 | 2368459.9250 | EXIST. ROW     |
| 332+61.71 | 40.00' LT. | 644966.9147 | 2368564.4885 | EXIST. ROW     |
| 333+11.67 | 40.00' LT. | 644928.8586 | 2368596.8573 | EXIST. ROW     |
| 333+73.91 | 40.00' LT. | 644881.4484 | 2368637.1822 | EXIST. ROW     |
| 333+93.91 | 40.00' LT. | 644866.2139 | 2368650.1400 | EXIST. ROW     |
| 333+99.99 | 40.00' LT. | 644861.5777 | 2368654.0833 | EXIST. ROW     |
| 337+63.78 | 43.96' LT. | 644587.0359 | 2368892.7939 | EXIST. ROW     |
| 337+83.94 | 44.18' LT. | 644571.8225 | 2368906.0218 | EXIST. ROW     |

| Curve                             | Angle                      | Radius    | Tangent  | Chord    |
|-----------------------------------|----------------------------|-----------|----------|----------|
| C1                                | $\Delta 21^\circ 29' 48''$ | R 100.00' | L 37.52' | C 37.30' |
| C2                                | $\Delta 21^\circ 31' 39''$ | R 40.00'  | L 15.03' | C 14.94' |
| CB N 60°32'57" E CB N 60°32'02" E |                            |           |          |          |

| Point | Document                      |
|-------|-------------------------------|
| (A)   | BK. 2768, PG. 513             |
| (B)   | BK. 2753 PG. 823              |
| (C)   | BK. 2755, PG. 1246            |
| (D)   | CONDEMNATION CASE NO. 89-ED-7 |
| (E)   | BK. 2768, PG. 515             |
| (F)   | BK. 2770, PG. 2222            |
| (G)   | BK. 2770, PG. 2202            |

| PARCEL NO. | OWNER  | BOOK & PAGE     | TOTAL HOLDING ACRES | GROSS ACRES | FFE SIMPLE ACQUISITION PREVIOUSLY DEDICATED |         | NET   |         | REMAINDER | EASEMENTS                  |                        | PERMANENT TAX NUMBER | PROPERTY ACQUIRED BY |
|------------|--|-----------------|---------------------|-------------|---|---------|-------|---------|-----------|----------------------------|------------------------|----------------------|----------------------|
|            |  |                 |                     |             | ACRES                                       | SQ. FT. | ACRES | SQ. FT. |           | ACRES                      | SQ. FT.                |                      |                      |
| 8019059    | RICHARD & LINDA SANDERS, AS TENANTS IN COMMON<br>TITLE REPORT NO. SC-2854.20           | BK 2744 PG 818  | 1.3458              | N/A         | N/A   | N/A     | N/A   | N/A     | 1.3458    | TE 0.0443                  | TE 1,931               | 14-19-0-202-037      |                      |
| 8019061    | CASEY'S RETAIL COMPANY<br>TITLE REPORT NO. SC-2854.31                                  | BK 4050 PG 1153 | 0.5641              | N/A         | N/A   | N/A     | N/A   | N/A     | 0.5641    | TE 0.0185                  | TE 807                 | 14-19-0-202-038      |                      |
| 8019063    | MCDONALD'S CORPORATION, A DELAWARE CORPORATION<br>TITLE REPORT NO. SC-2854.34          | BK 3182 PG 105  | 1.6736              | N/A         | N/A   | N/A     | N/A   | N/A     | 1.6736    | TE-A 0.0143<br>TE-B 0.1367 | TE-A 622<br>TE-B 5,354 | 14-19-0-202-032      |                      |
| 8019110    | Freeburg MHP, LLC, a Michigan Limited Liability Company<br>TITLE REPORT NO. SC-2854.14 | BK 3825 PG 1905 | 25.4210             | 0.0287      | 1,250                                       | N/A     | N/A   | 0.0287  | 1,250     | TE 0.0115                  | TE 500                 | 14-18-0-400-037      |                      |

Freeburg MHP, LLC, a Michigan Limited Liability Company  
 D.B. 3825, P.G. 1905  
 SEE SHEET 45  
 FOR TOTAL HOLDING



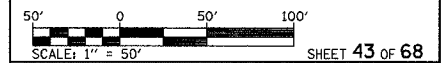
STATE OF ILLINOIS )  
 ) SS  
 COUNTY OF )

THIS IS TO CERTIFY THAT I, RONALD G. BRIGHT AN ILLINOIS PROFESSIONAL LAND SURVEYOR, SURVEYED THE PLAT OF HIGHWAYS SHOWN HEREON IN U.S. SURVEYS NO. 382, 389, AND 772 AND IN SECTIONS 6, 7, 18, 19, 20, 29 AND 30, TOWNSHIP 1 SOUTH, RANGE 7 WEST, OF THE THIRD PRINCIPAL MERIDIAN, ST. CLAIR COUNTY, ILLINOIS, THAT THE SURVEY IS COMPLETE AS SHOWN TO THE BEST OF MY KNOWLEDGE AND BELIEF, THAT THE PLAT REPRESENTS SAID SURVEY, THAT ALL MONUMENTS FOUND AND ESTABLISHED ARE OF PERMANENT QUALITY AND OCCUPY THE POSITIONS SHOWN THEREON AND THAT THE MONUMENTS ARE SUFFICIENT TO ENABLE THE SURVEY TO BE RETRACED. MADE FOR THE DEPARTMENT OF TRANSPORTATION, STATE OF ILLINOIS.

DATED \_\_\_\_\_  
 RONALD G. BRIGHT, PLS #3157  
 EXPIRES NOVEMBER 30, 2006

**kdg** KUHLMANN DESIGN GROUP, INC.  
 15 E. WASHINGTON STREET  
 BELLEVILLE, ILLINOIS 62220  
 (618) 234-8898

ILLINOIS DEPARTMENT OF TRANSPORTATION  
**PLAT OF HIGHWAYS**  
 FAP ROUTE 103 (IL RTE. 13/15)  
 SECTION 27-1R  
 ST. CLAIR COUNTY  
 JOB NO. R-98-019-00  
 STATION 327+12.42 TO STATION 337+63.77



ILLINOIS DEPARTMENT OF TRANSPORTATION  
 DIVISION OF HIGHWAYS-DISTRICT 8  
 1102 EASTPORT PLAZA DRIVE  
 COLLINSVILLE, ILLINOIS 62234-6198