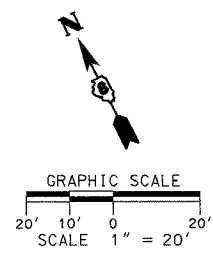
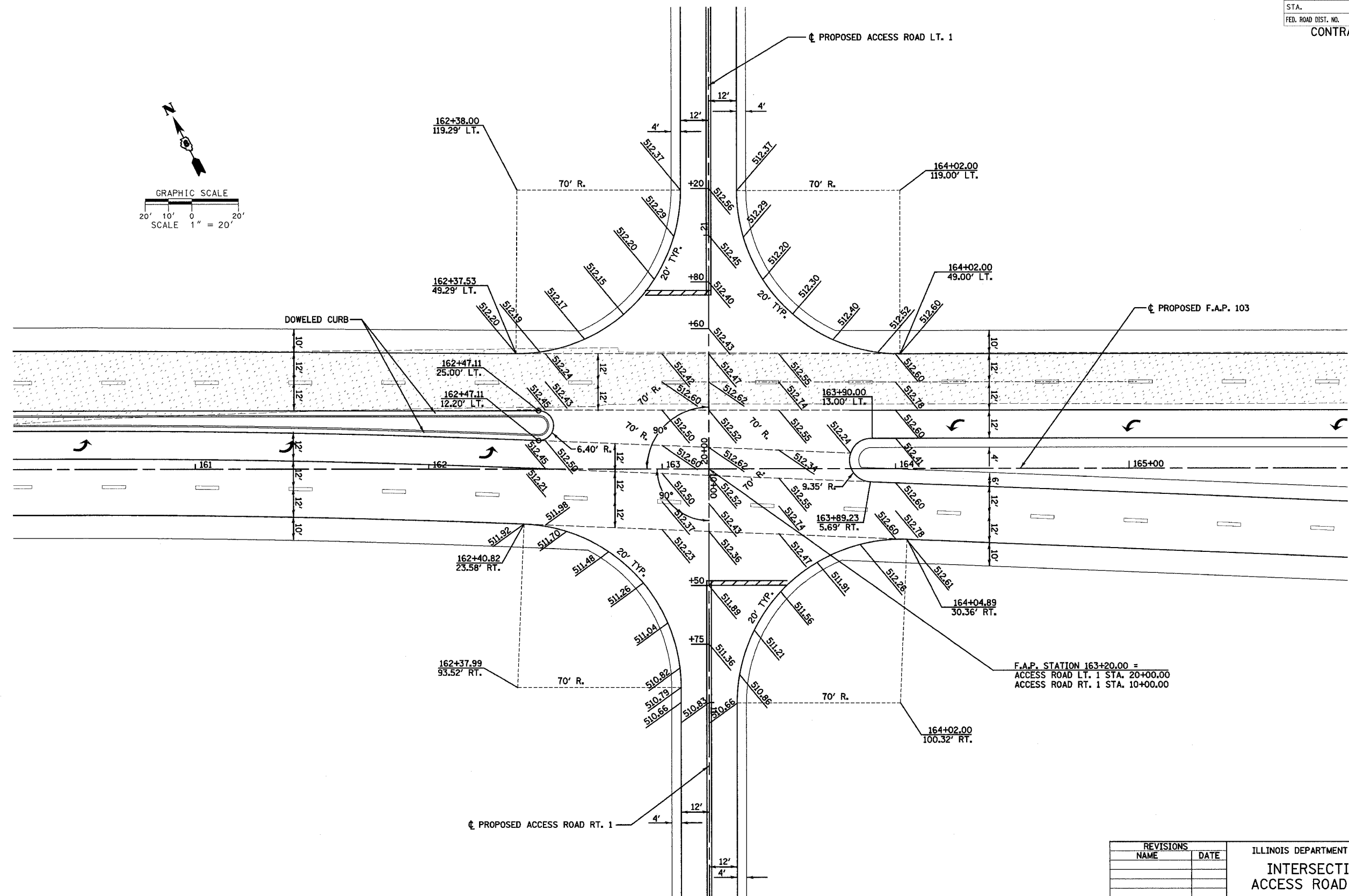


F.A. RTE.	SECTION	COUNTY	TOTAL SHEETS	SHEET NO.
103	27-1R	ST. CLAIR	382	164A
STA.		TO STA.		
FED. ROAD DIST. NO.		ILLINOIS FED. AID PROJECT		
CONTRACT NO. 76300				



PLAN	DATE
BY	
NO.	
NO.	
NO.	
NO.	
NO.	
NO.	
NO.	
NO.	

PLAN	DATE
BY	
NO.	
NO.	
NO.	
NO.	
NO.	
NO.	
NO.	
NO.	



DENOTES EXISTING PAVEMENT

REVISIONS	
NAME	DATE

ILLINOIS DEPARTMENT OF TRANSPORTATION  
**INTERSECTION DETAIL**  
**ACCESS ROAD STA 163+20**  
 F.A.P. 103 (IL. RTE. 13/15)  
 SECTION 27-1R - ST. CLAIR CO.  
 SCALE: 1" = 20'  
 DATE **February 11, 2005** DRAWN BY  
 CHECKED BY **RCY**

3/10/2005 10:00 AM 3/10/2005 10:00 AM