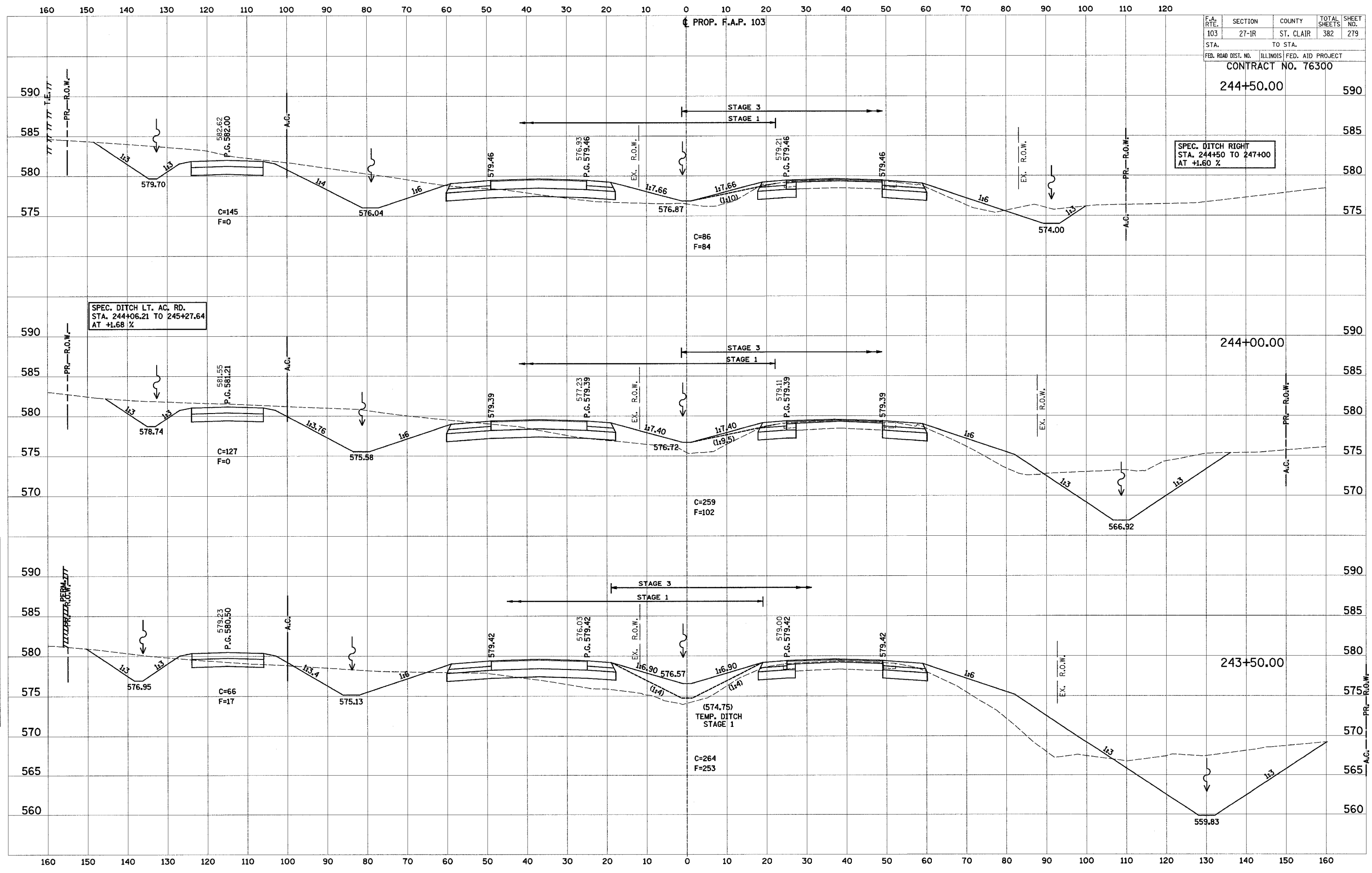


F.A. RTE.	SECTION	COUNTY	TOTAL SHEETS	SHEET NO.
103	27-1R	ST. CLAIR	382	279
STA.		TO STA.		
FED. ROAD DIST. NO.		ILLINOIS FED. AID PROJECT		

CONTRACT NO. 76300

244+50.00 590

SPEC. DITCH RIGHT  
STA. 244+50 TO 247+00  
AT +1.60 %



SPEC. DITCH LT. AC. RD.  
STA. 244+06.21 TO 245+27.64  
AT +1.68 %

DATE	BY
DATE	BY
DATE	BY
DATE	BY
DATE	BY

DATE	BY
DATE	BY
DATE	BY
DATE	BY
DATE	BY