

F.A. RTE.	SECTION	COUNTY	TOTAL SHEETS	SHEET NO.
103	27-1R	ST. CLAIR	382	296
STA.		TO STA.		
FED. ROAD DIST. NO.		ILLINOIS FED. AID PROJECT		

CONTRACT NO. 76300

260+73.21

590

260+50.00

585

260+45.52

580

260+45.52

575

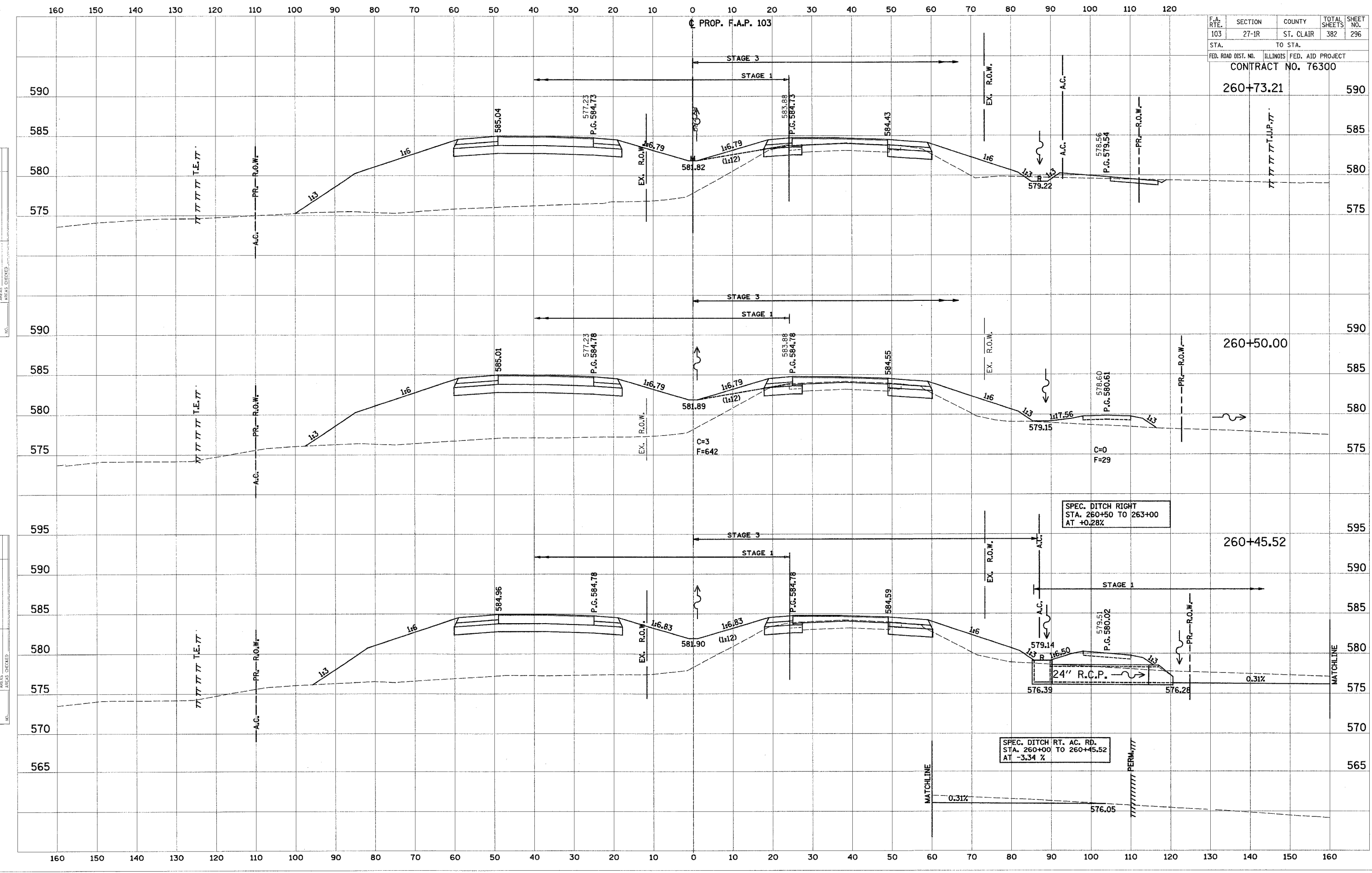
260+45.52

570

260+45.52

565

PROP. F.A.P. 103



SPEC. DITCH RIGHT
STA. 260+50 TO 263+00
AT +0.28%

SPEC. DITCH RT. AC. RD.
STA. 260+00 TO 260+45.52
AT -3.34 %

DATE
BY
SURVEYED
PLOTTED
NOTE BOOK
AREAS CHECKED

DATE
BY
SURVEYED
PLOTTED
NOTE BOOK
AREAS CHECKED