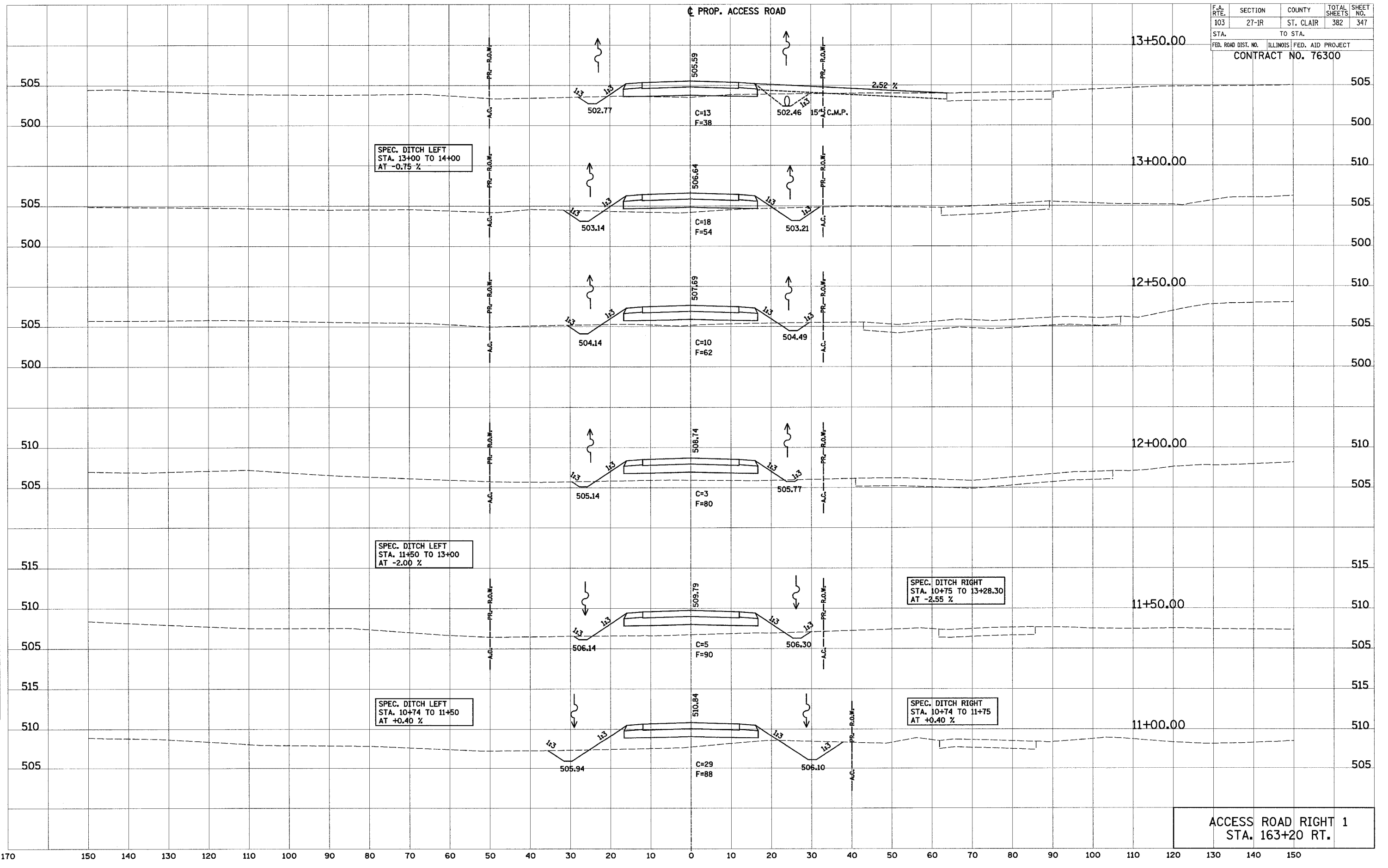


F.A. RTE.	SECTION	COUNTY	TOTAL SHEETS	SHEET NO.
103	27-1R	ST. CLAIR	382	347
STA.		TO STA.		
FED. ROAD DIST. NO.		ILLINOIS	FED. AID PROJECT	
CONTRACT NO. 76300				

PROP. ACCESS ROAD



DATE	BY

DATE	BY

ACCESS ROAD RIGHT 1
STA. 163+20 RT.