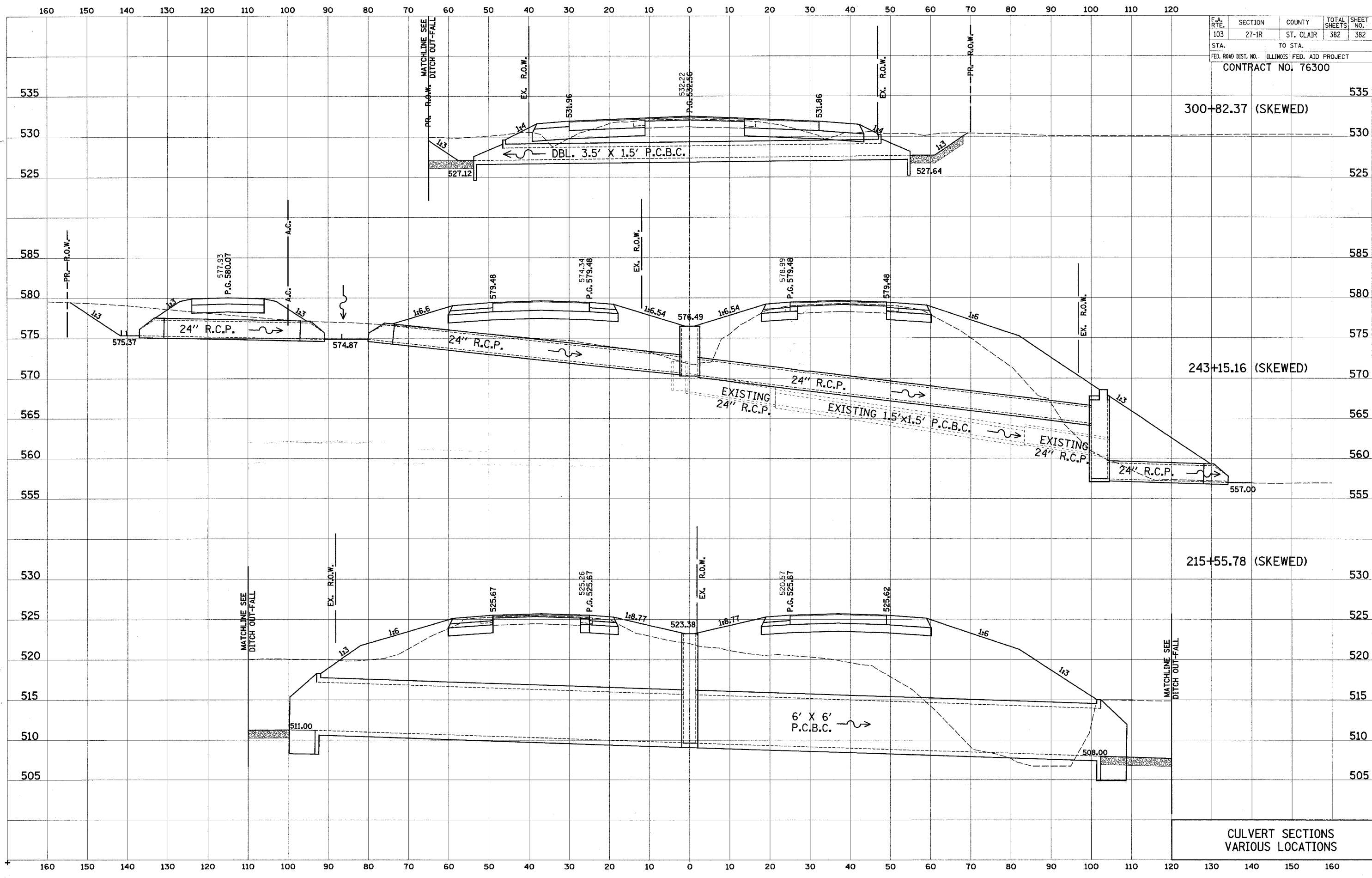


F.A. RTE.	SECTION	COUNTY	TOTAL SHEETS	SHEET NO.
103	27-1R	ST. CLAIR	382	382
STA.		TO STA.		
FED. ROAD DIST. NO.		ILLINOIS	FED. AID PROJECT	
CONTRACT NO. 76300				



300+82.37 (SKEWED)

243+15.16 (SKEWED)

215+55.78 (SKEWED)

CULVERT SECTIONS
VARIOUS LOCATIONS

FINAL SURVEY
DATE _____ BY _____
SURVEY _____
NOTE _____ BOOK _____ NO. _____
TEMPLATE _____
AREAS _____
CHECKED _____

ORIGINAL SURVEY
DATE _____ BY _____
SURVEY _____
NOTE _____ BOOK _____ NO. _____
TEMPLATE _____
AREAS _____
CHECKED _____