

FA ROUTE	SECTION	COUNTY	TOTAL SHEETS	SHEET NO.
28-3BR-I, 28-4BR		ST. CLAIR	101	1

* FAU 9251 / FAS 1848

100

STATE OF ILLINOIS
DEPARTMENT OF TRANSPORTATION
DIVISION OF HIGHWAYS

**PROPOSED
HIGHWAY PLANS**

FAU ROUTE 9251 / FAS ROUTE 1848 (IL 158 / 177)

SECTION 28-3BR-I, 28-4BR

PROJECT: *BRS-RS-1848(106)*

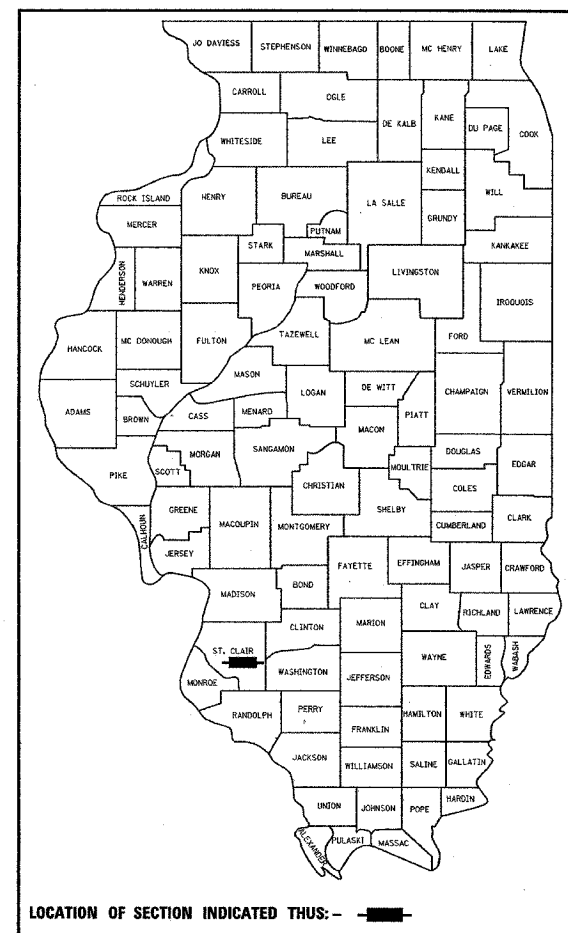
STRUCTURE REPLACEMENTS

ST. CLAIR COUNTY

C-98-061-05

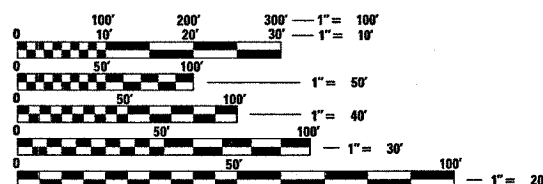
FOR INDEX OF SHEETS, SEE SHEET NO. 2

D-98-124-00



PROJECT ENGINEER: **FATTI LeBEAU (618) 346-3179**
SQUAD CONTACT: **ARTHUR MUEHLFELD (618) 346-3209**

MICROFILMED _____
REEL NUMBER _____
AWARDED _____
RESIDENT ENGINEER _____
AS BUILT CHANGES WERE MADE
ON THE FOLLOWING SHEETS



FULL SIZE PLANS HAVE BEEN PREPARED USING STANDARD
ENGINEERING SCALES. REDUCED SIZED PLANS WILL NOT
CONFORM TO STANDARD SCALES. IN MAKING MEASUREMENTS
ON REDUCED PLANS, THE ABOVE SCALES MAY BE USED.

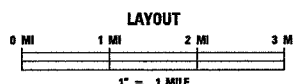
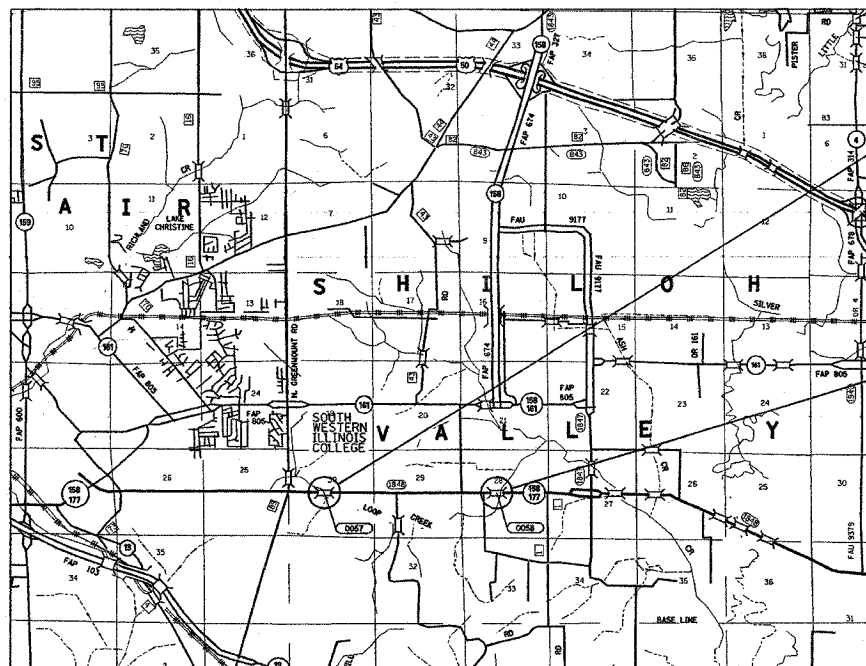
J.U.L.I.E.
JOINT UTILITY LOCATION INFORMATION FOR EXCAVATION
1-800-892-0123

CONTRACT NO. 76394

SEC 28-3BR-I SN 082-0398 (P)
ADT = 8600 (2003)
ADT = 13,100 (2024)
SU = 2.9%
MU = 2.6%

SEC 28-4BR SN 082-0272 (P)
ADT = 7000 (2003)
ADT = 10,600 (2024)
SU = 4.3%
MU = 2.5%

DESIGN DESIGNATION



SEC 28-3BR-I SN 082-0398 (P)
LAT 38.50494
LONG 89.92155

SEC 28-4BR SN 082-0272 (P)
LAT 38.50462
LONG 89.88327

SINGLE SPAN PPC DECK BEAM
TO BE REPLACED WITH A THREE
SPAN I-BEAM STRUCTURE OVER
LOOP CREEK.
BEGIN STA 242+00
END STA 251+00
SN 082-0057 (E)
SN 082-0398 (P)

TWO SPAN RC SLAB TO BE
REPLACED WITH A THREE
SPAN I-BEAM STRUCTURE
OVER LOOP CREEK
BEGIN STA 352+60
END STA 360+20
SN 082-0058 (E)
SN 082-0272 (P)

SEC 28-3BR-I
GROSS LENGTH 0.020 MI
NET LENGTH 0.020 MI
SEC 28-4BR
GROSS LENGTH 0.021 MI
NET LENGTH 0.021 MI
TOTAL
GROSS LENGTH 0.041 MI
NET LENGTH 0.041 MI

STATE OF ILLINOIS
DEPARTMENT OF TRANSPORTATION
DIVISION OF HIGHWAYS
SUBMITTED *Feb 10 2006*
May C. Ramo
DEPUTY DIRECTOR OF HIGHWAYS
REGION FIVE ENGINEER
March 24 2006
Mike Hene
ENGINEER OF DESIGN AND ENVIRONMENT
March 24 2006
Milton R. Sosa
DIRECTOR, DIVISION OF HIGHWAYS

**PRINTED BY THE AUTHORITY
OF THE STATE OF ILLINOIS**