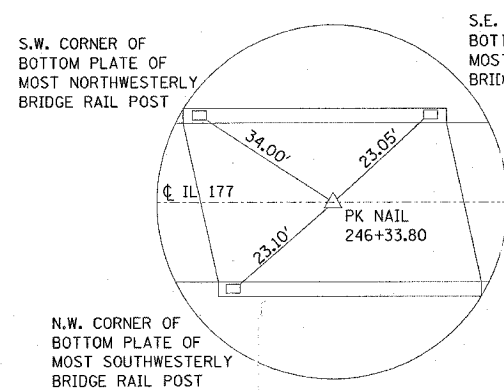
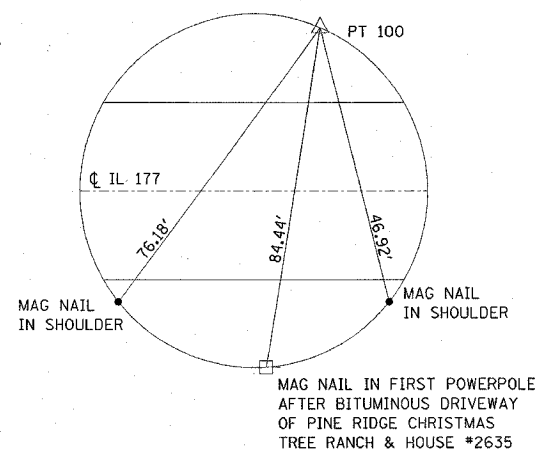


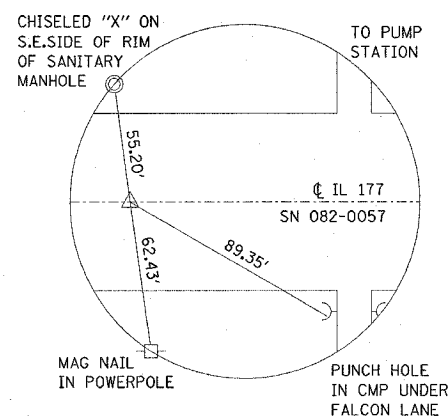
F.A. RTE.	SECTION	COUNTY	TOTAL SHEETS	SHEET NO.
*	**	ST. CLAIR	101	8
STA.		TO STA.		
FED. ROAD DIST. NO.	ILLINOIS	FED. AID PROJECT		
• FAU 9251 / FAS 1848 •• 28-3BR-I, 28-4BR				



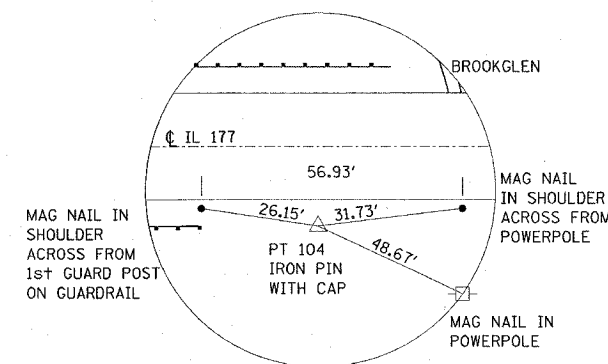
SN 082-0057



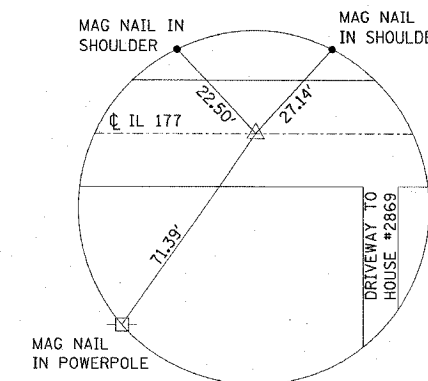
PT 100
STA. 233+48±
OFFSET 20.87'



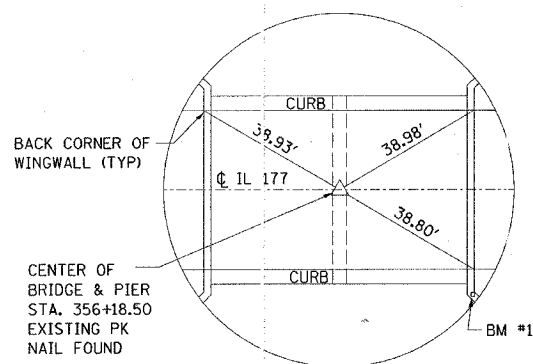
STA. 242+00



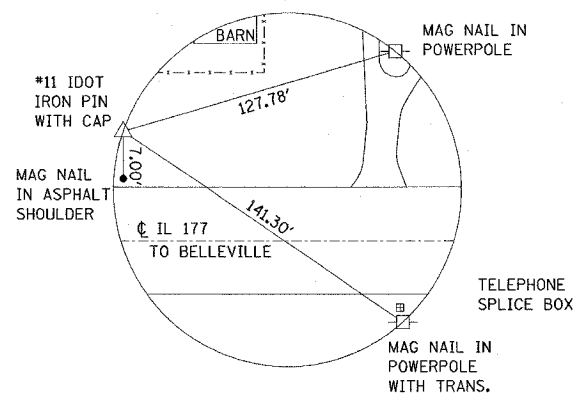
PT 104
STA. 249+00±
OFFSET 24.38'±



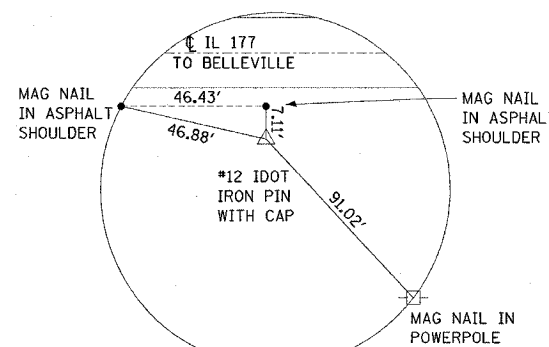
STA. 254+00



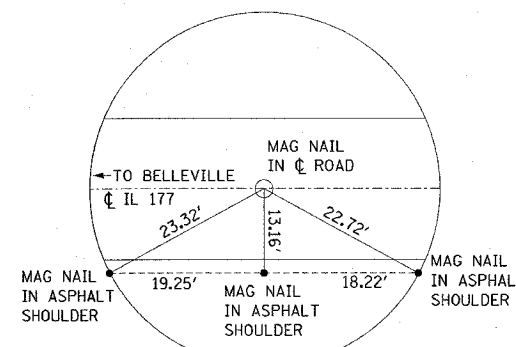
SN 082-0058



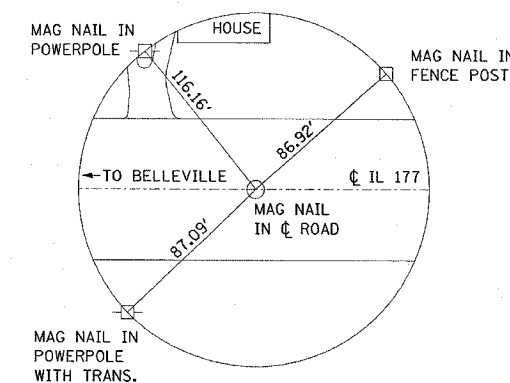
CONTROL POINT #11



CONTROL POINT #12



STA. 351+00



STA. 360+76.55

NOTE: ALL TIES PULLED DIRECT

BENCHMARKS

- SN 082-0057 BM #1 - CHISELED "□" ON TOP OF N.W. WINGWALL AT THE WEST ABUTMENT STA. 245+85± ELEV = 462.91
- SN 082-0058 BM #1 - CHISELED "□" ON TOP OF S.E. WINGWALL STA. 356+55.00, 20.0' RT, ELEV = 439.92

REVISIONS	
NAME	DATE

ILLINOIS DEPARTMENT OF TRANSPORTATION

TIE POINTS AND BENCHMARKS

FAU ROUTE 9251/FAS ROUTE 1848
SECTION 28-3BR-I, 28-4BR
ST. CLAIR COUNTY