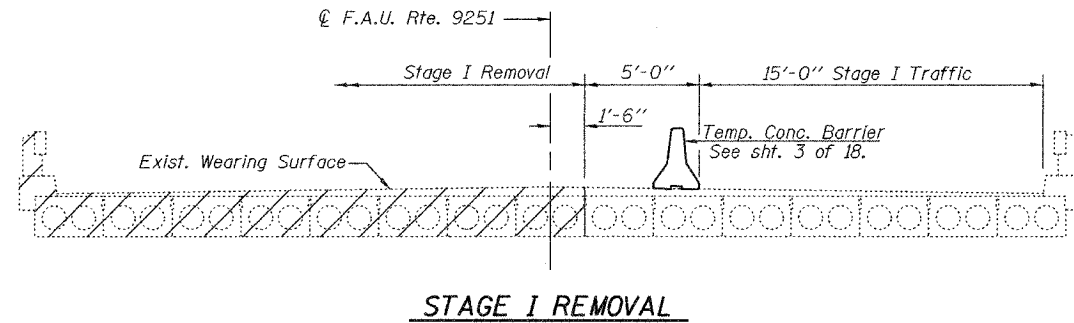


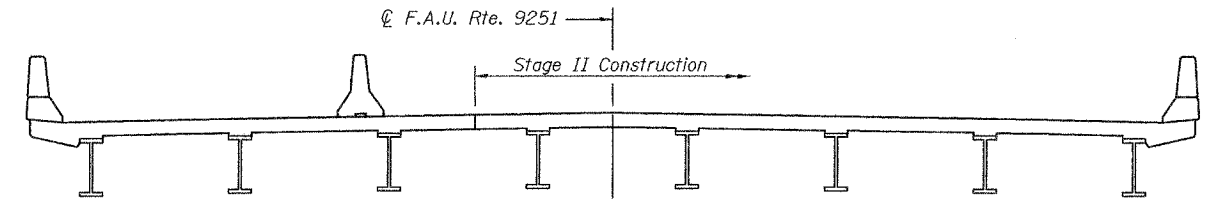
STATE OF ILLINOIS  
DEPARTMENT OF TRANSPORTATION

ROUTE NO.	SECTION	COUNTY	LETTERS	SHEET	SHEET NO. 2 18 SHEETS
F.A.U. 9251	28-3 BR-1	ST. CLAIR	101	25	
FED. ROAD DIST. NO. 7	ILLINOIS	FED. AID PROJECT-			

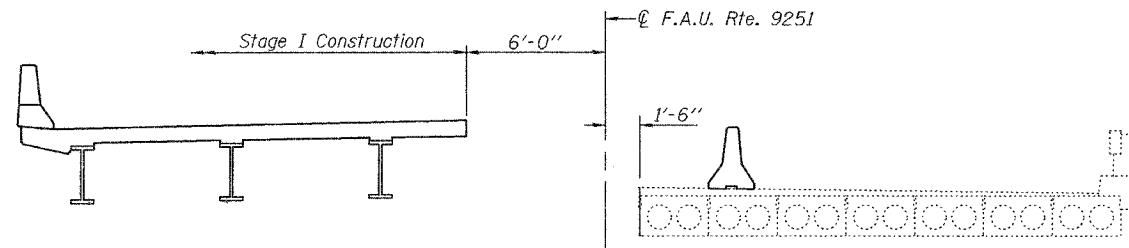
Contract #76394



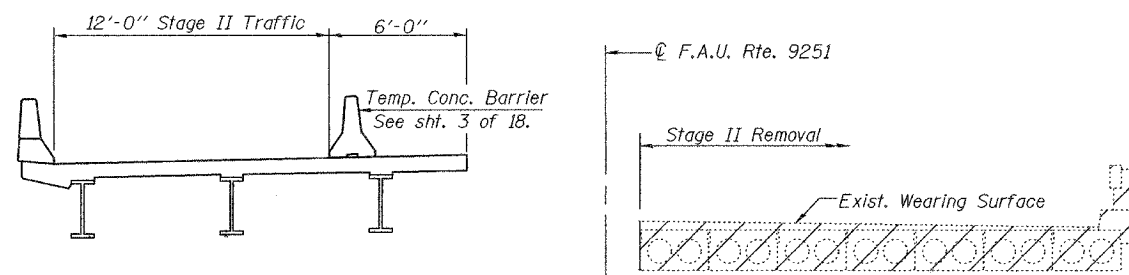
STAGE I REMOVAL



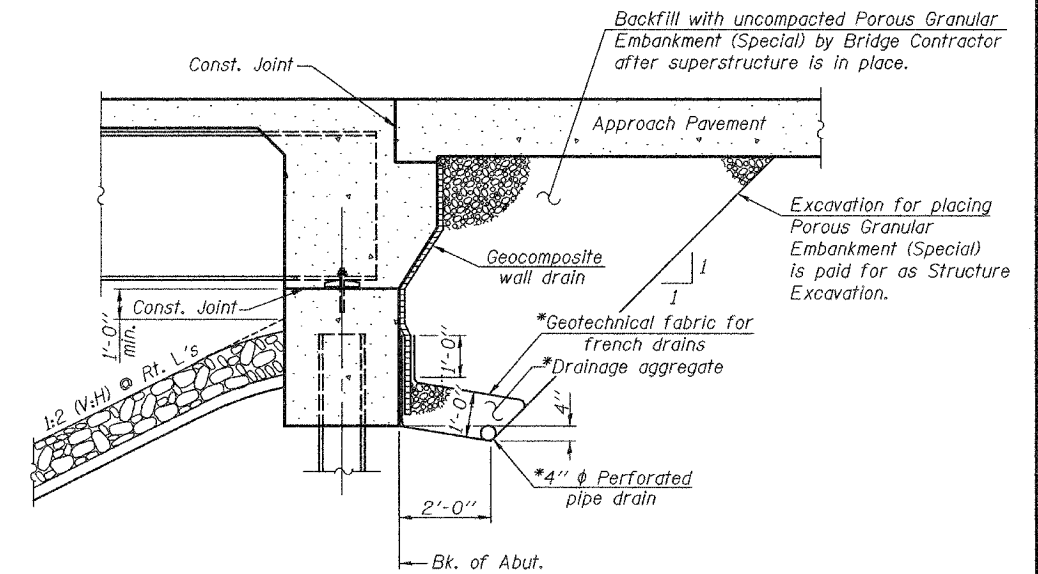
STAGE II CONSTRUCTION



STAGE I CONSTRUCTION



STAGE II REMOVAL

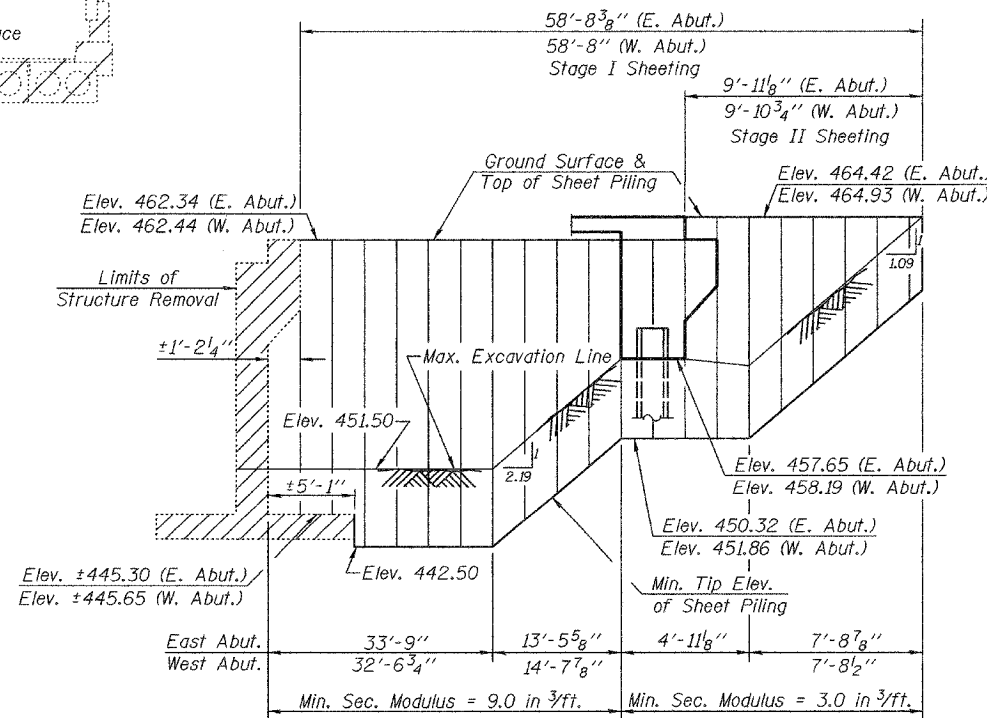


SECTION THRU INTEGRAL ABUTMENT  
(Horiz. dim. @ Rt. L's)

\*Included in the cost of Pipe Underdrains for Structures, 4".

Notes: All drainage system components shall extend to 2'-0" from the end of each wingwall except an outlet pipe shall extend until intersecting with the side slopes. The pipes shall drain into concrete headwalls. (See Article 601.05 of the Standard Specifications and Highway Standard 60110).

All staging sections are looking East.  
For quantity of Temporary Concrete Barrier, See Roadway Plans. Hatched areas indicate Removal of Existing Structures.  
If the Contractor chooses to alter the temporary cantilevered sheet piling design requirements shown on the plans, a design submittal including plan details and calculations will be required for review and acceptance by the Engineer.  
The Contractor shall connect the first sheet to the existing abutment wall to ensure stability of sheets driven to the top of the existing footing. This connection shall be reviewed and accepted by the Engineer and included in the cost for Temporary Sheet Piling.



TEMPORARY SHEET PILING

(Slopes and distance shown along alignment of sheeting)

DESIGNED	Rebecca Tharp
CHECKED	Curt Evoy
DRAWN	R. Sommer
CHECKED	RLT/CME

March 16, 2006  
EXAMINED *Thomas J. Domagala*  
PASSED *Ralph E. Anderson*  
ENGINEER OF BRIDGES AND STRUCTURES

STAGE CONSTRUCTION DETAILS  
F.A.U. ROUTE 9251 - SECTION 28-3BR-1  
ST. CLAIR COUNTY  
STATION 246+33.80  
STRUCTURE NO. 082-0398