

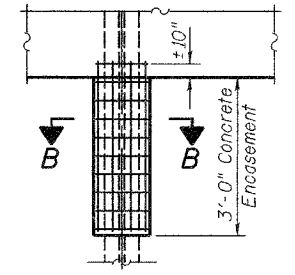
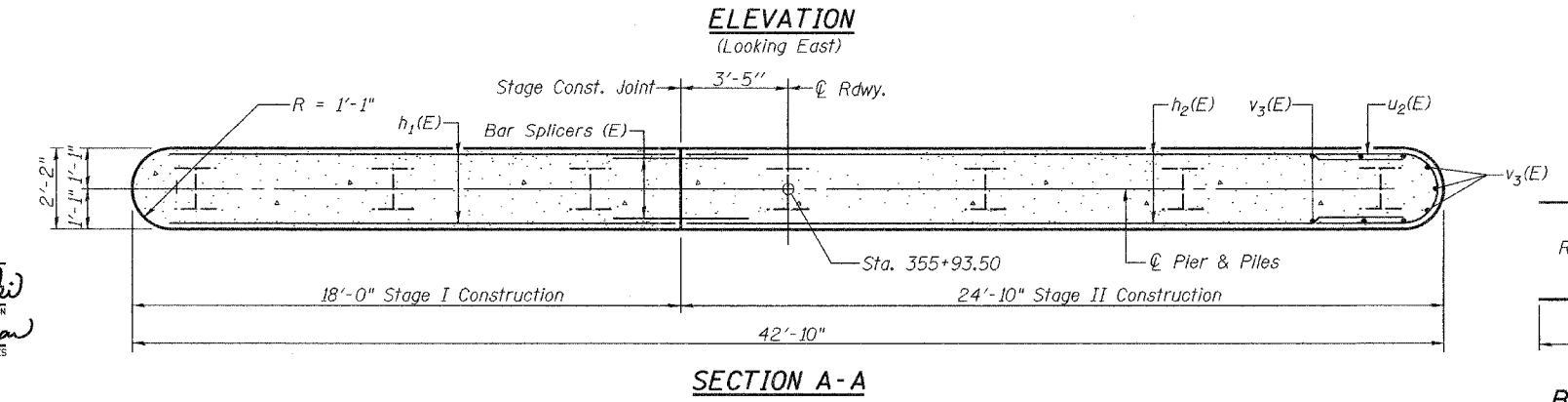
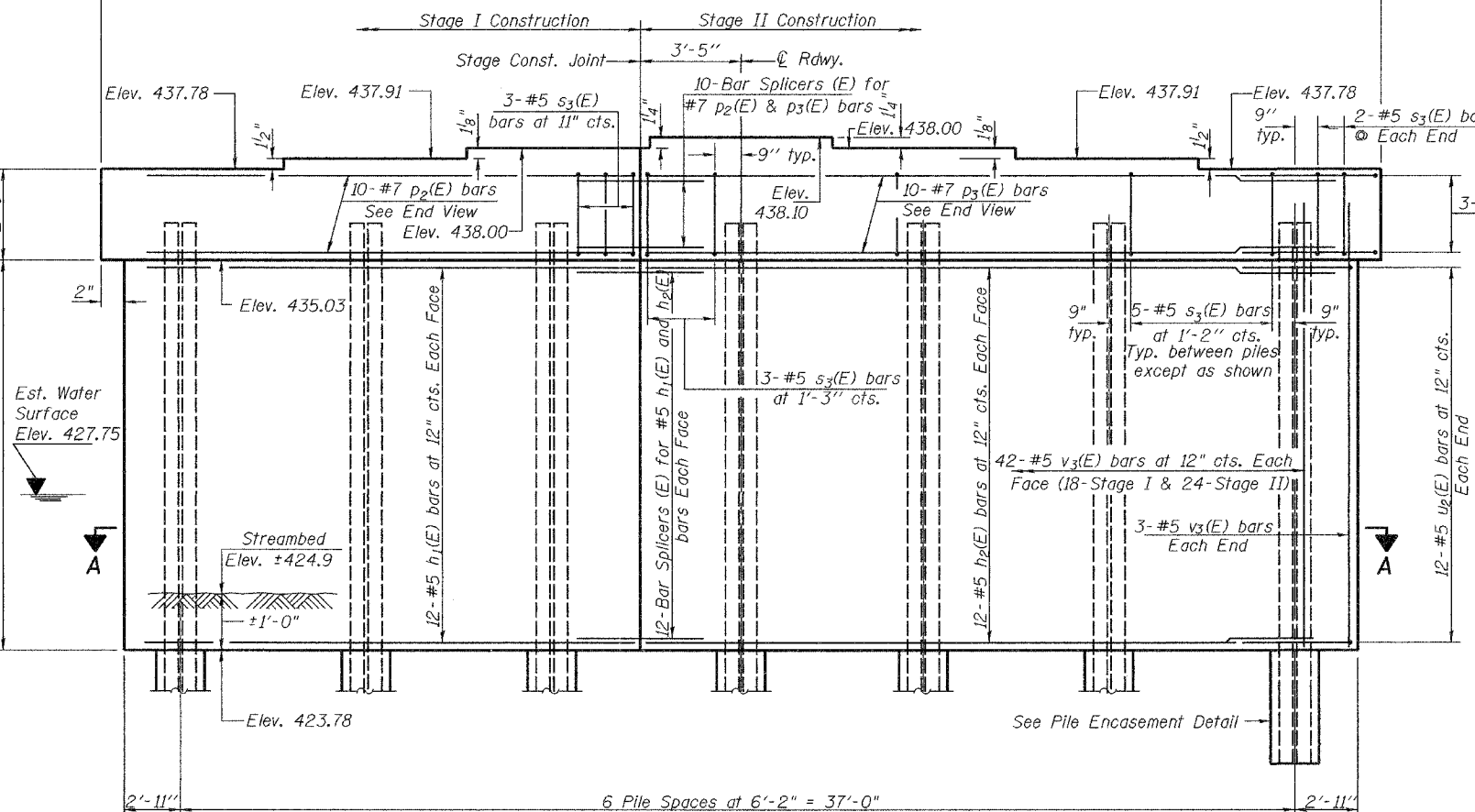
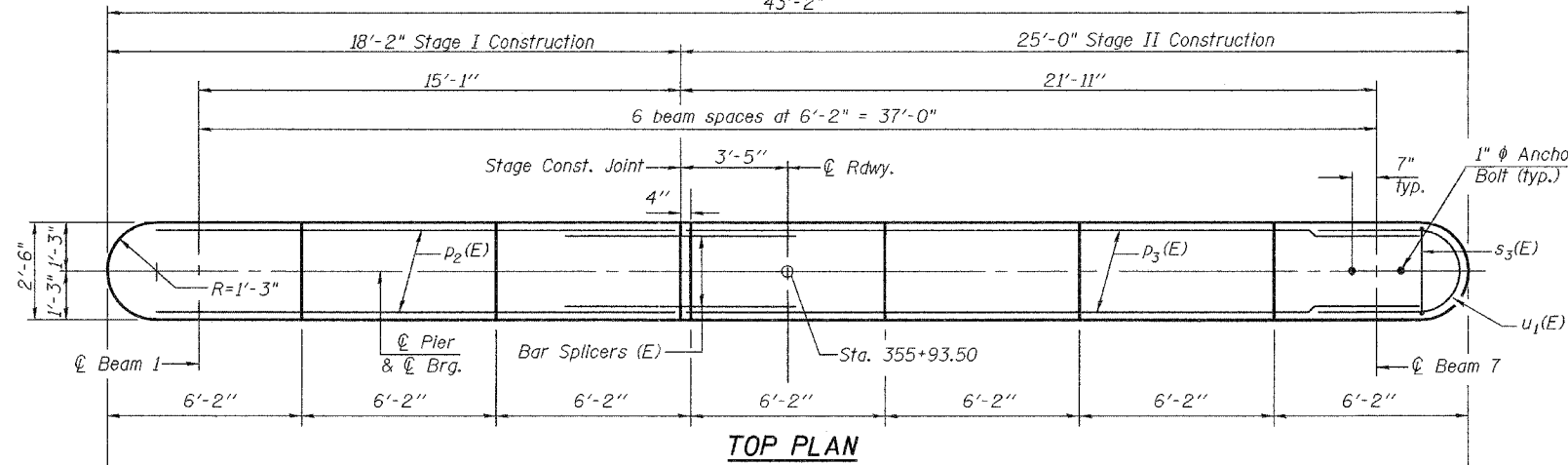
STATE OF ILLINOIS
DEPARTMENT OF TRANSPORTATION
43'-2"

ROUTE NO.	SECTION	COUNTY	SHEETS	SHEET NO.
F.A.S. 1848	28-4BR	ST. CLAIR	101	83
FED. ROAD DIST. NO. 7	ILLINOIS	FED. AID PROJECT		

SHEET NO. 16
22 SHEETS

Contract #76394

Notes:
Pour steps monolithically with cap.
Reinforcement bars designated (E) shall be epoxy coated.
Space reinforcement in cap to miss anchor bolts.
For anchor bolt installation details see sheet 13 of 22.
For bar splicer details see sheet 18 of 22.



Welded wire fabric 6x6-W4.0xW4.0 weighing 58#/100 sq. ft. The cost of Excavation, Concrete Encasement and Reinforcement is included with Furnishing Piles. Forms for Encasement may be omitted when soil conditions permit.

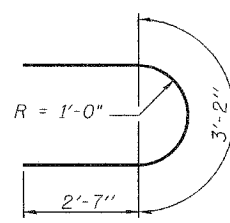
HP12x74
SECTION B-B
PILE ENCASEMENT DETAIL

PILE DATA
Type: Refusal HP12x74 with Pile Shoes
Nominal Required Bearing: 588.5 Tons
Nominal Design Capacity: 392.5 Tons
Est. Length: 55'
No. Required: 7

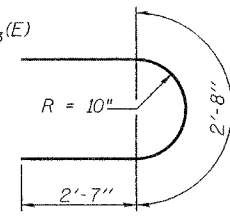
BILL OF MATERIAL

Bar No.	Size	Length	Shape
h1(E)	24 #5	16'-5"	—
h2(E)	24 #5	23'-3"	—
p2(E)	10 #7	16'-7"	—
p3(E)	10 #7	23'-5"	—
s3(E)	35 #5	9'-11"	□
u1(E)	6 #6	8'-4"	U
u2(E)	24 #5	7'-10"	U
v3(E)	90 #5	12'-7"	—
Concrete Structures		Cu. Yd.	49.5
Reinforcement Bars, Epoxy Coated		Pound	3,620
Furnishing Steel Piles HP12x74		Foot	385
Driving Piles		Foot	385
Structure Excavation		Cu. Yd.	39.5
Pile Shoes		Each	7
Underwater Structure Excavation Protection - Location 1		Each	1

BAR s3(E)



BAR u1(E)



BAR u2(E)

DESIGNED M.D. Cima
CHECKED R.J.C.
DRAWN W.D. Collins
CHECKED M.D.C. R.J.C.

March 17, 2006
EXAMINED Thomas J. Damagalki
PASSED Ralph E. Anderson
ENGINEER OF BRIDGES AND STRUCTURES

PIER 1
F.A.S. ROUTE 1848 - SECTION 28-4BR
ST. CLAIR COUNTY
STATION 356+18.50
STRUCTURE NO. 082-0272