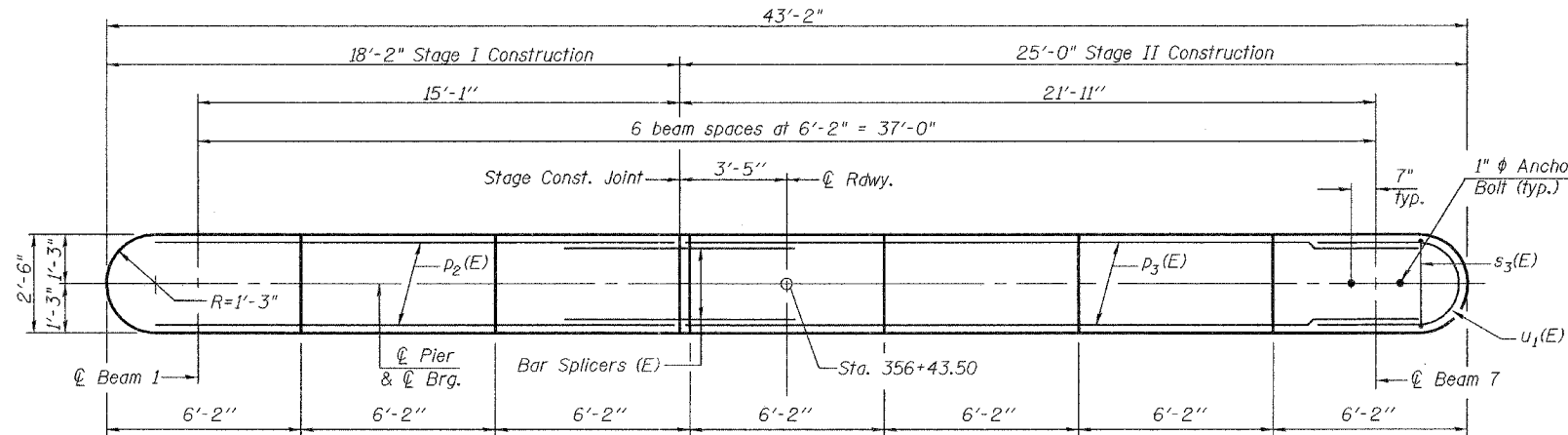


STATE OF ILLINOIS
DEPARTMENT OF TRANSPORTATION

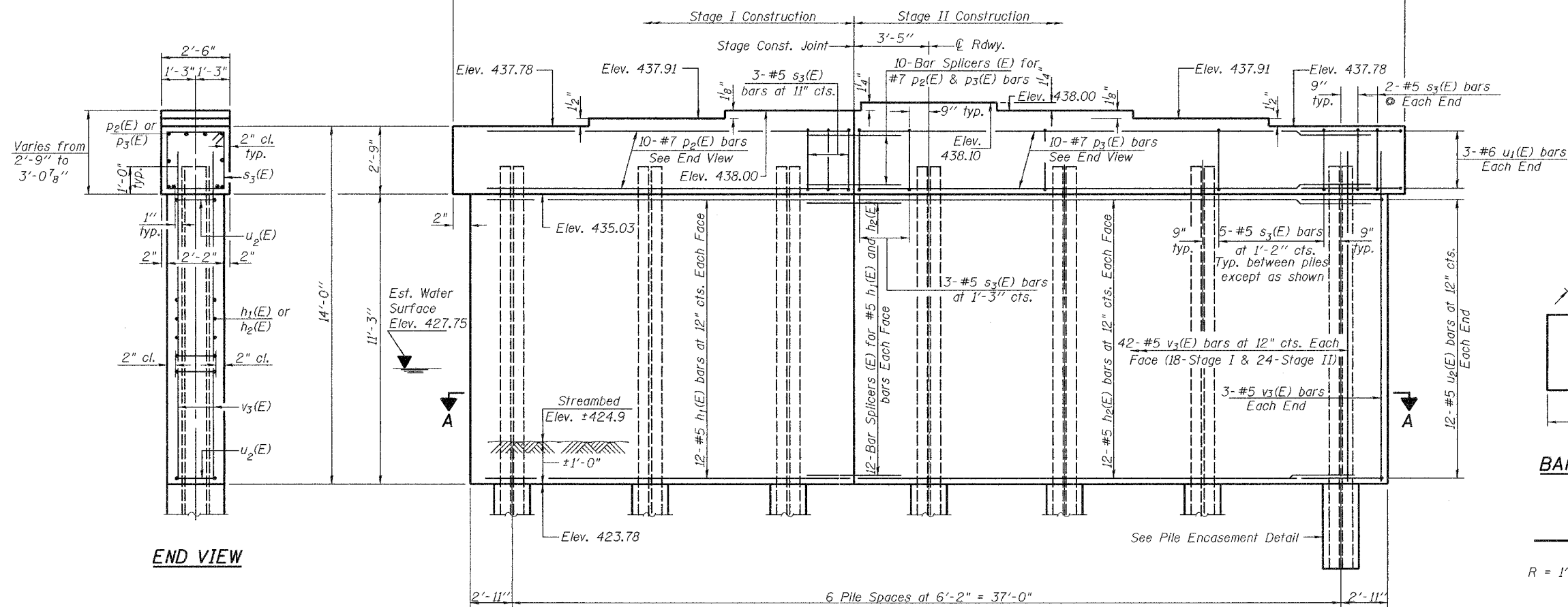
ROUTE NO.	SECTION	COUNTY	TOTAL SHEETS	SHEET NO.	SHEET NO. 17
F.A.S. 1848	28-4BR	ST. CLAIR	10	84	22 SHEETS
FED. ROAD DIST. NO. 7	ILL. PROJ. NO.	FED. AID PROJECT			

Contract #76394

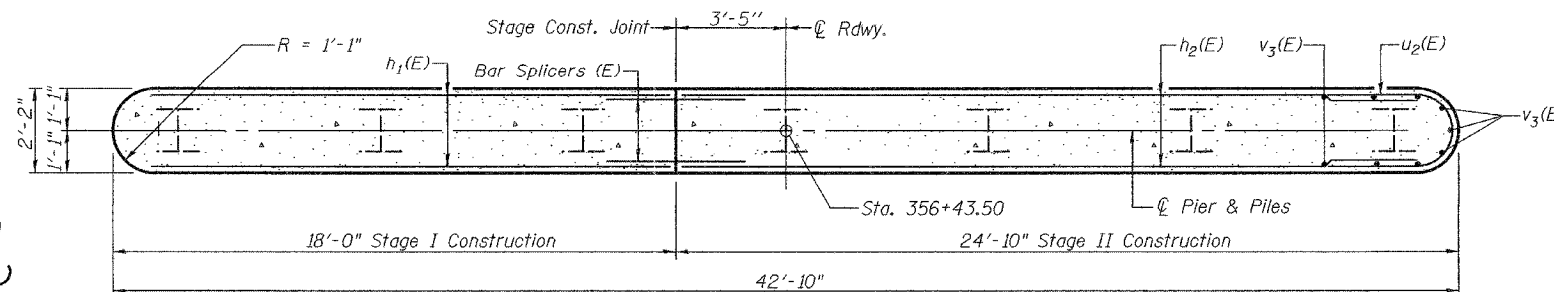
Notes:
Pour steps monolithically with cap.
Reinforcement bars designated (E) shall be epoxy coated.
Space reinforcement in cap to miss anchor bolts.
For anchor bolt installation details see sheet 13 of 22.
For bar splicer details see sheet 18 of 22.



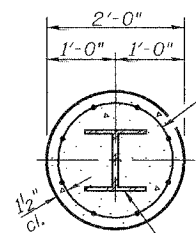
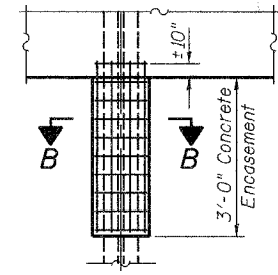
TOP PLAN



ELEVATION
(Looking East)



SECTION A-A



Welded wire fabric
6x6-W4.0xW4.0
weighing 58#/100 sq. ft.
The cost of Excavation,
Concrete Encasement and
Reinforcement is included
with Furnishing Piles.
Forms for Encasement may
be omitted when soil
conditions permit.

SECTION B-B

PILE ENCASEMENT DETAIL

PILE DATA

Type: Refusal HP12x74 with Pile Shoes
Nominal Required Bearing: 588.5 Tons
Nominal Design Capacity: 392.5 Tons
Est. Length: 55'
No. Required: 7

BILL OF MATERIAL

Bar No.	Size	Length	Shape
h1(E)	24 #5	16'-5"	—
h2(E)	24 #5	23'-3"	—
p2(E)	10 #7	16'-7"	—
p3(E)	10 #7	23'-5"	—
s3(E)	35 #5	9'-11"	□
u1(E)	6 #6	8'-4"	⊂
u2(E)	24 #5	7'-10"	⊂
v3(E)	90 #5	12'-7"	—
Concrete Structures	Cu. Yd.	49.5	
Reinforcement Bars, Epoxy Coated	Pound	3,620	
Furnishing Steel Piles HP12x74	Foot	385	
Driving Piles	Foot	385	
Structure Excavation	Cu. Yd.	39.5	
Pile Shoes	Each	7	
Underwater Structure Excavation Protection - Location 2	Each	1	

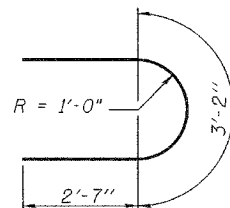
PIER 2

F.A.S. ROUTE 1848 - SECTION 28-4BR
ST. CLAIR COUNTY
STATION 356+18.50
STRUCTURE NO. 082-0272

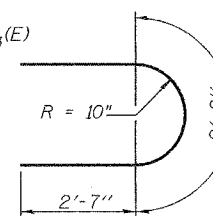
DESIGNED	M.D. Cima
CHECKED	R.J.C.
DRAWN	W.D. Collins
CHECKED	M.D.C. R.J.C.

March 17, 2006
EXAMINED *Thomas J. Demagala*
ENGINEER OF ARCHITECTURE DESIGN
PASSED *Ralph E. Anderson*
ENGINEER OF BRIDGES AND STRUCTURES

BAR s3(E)



BAR u1(E)



BAR u2(E)