

F.A.P. RTE.	SECTION	COUNTY	TOTAL SHEETS	SHEET NO.
600	30-ITS-1	MADISON	17	1

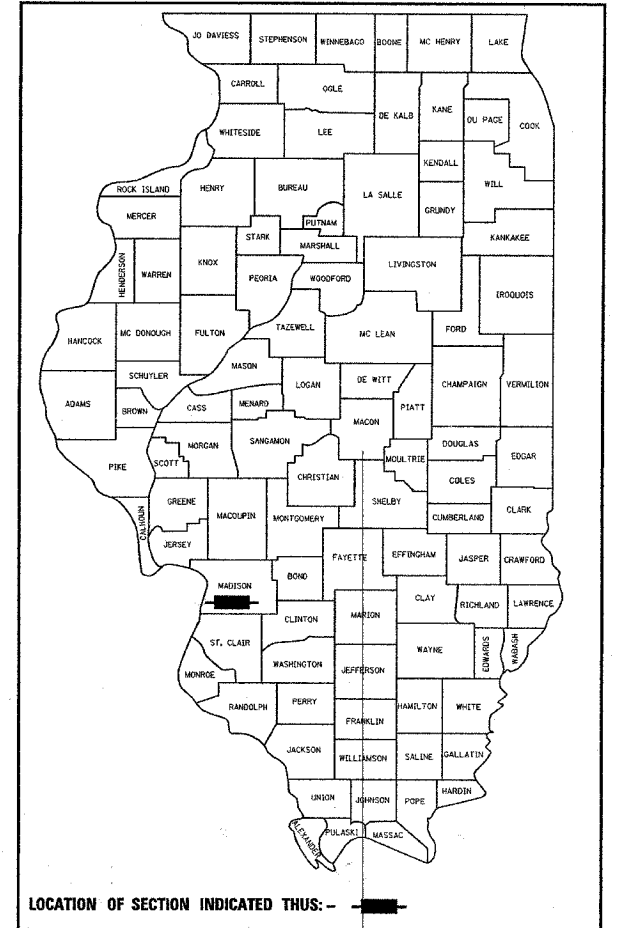
STATE OF ILLINOIS
DEPARTMENT OF TRANSPORTATION
DIVISION OF HIGHWAYS

**PROPOSED
HIGHWAY PLANS**

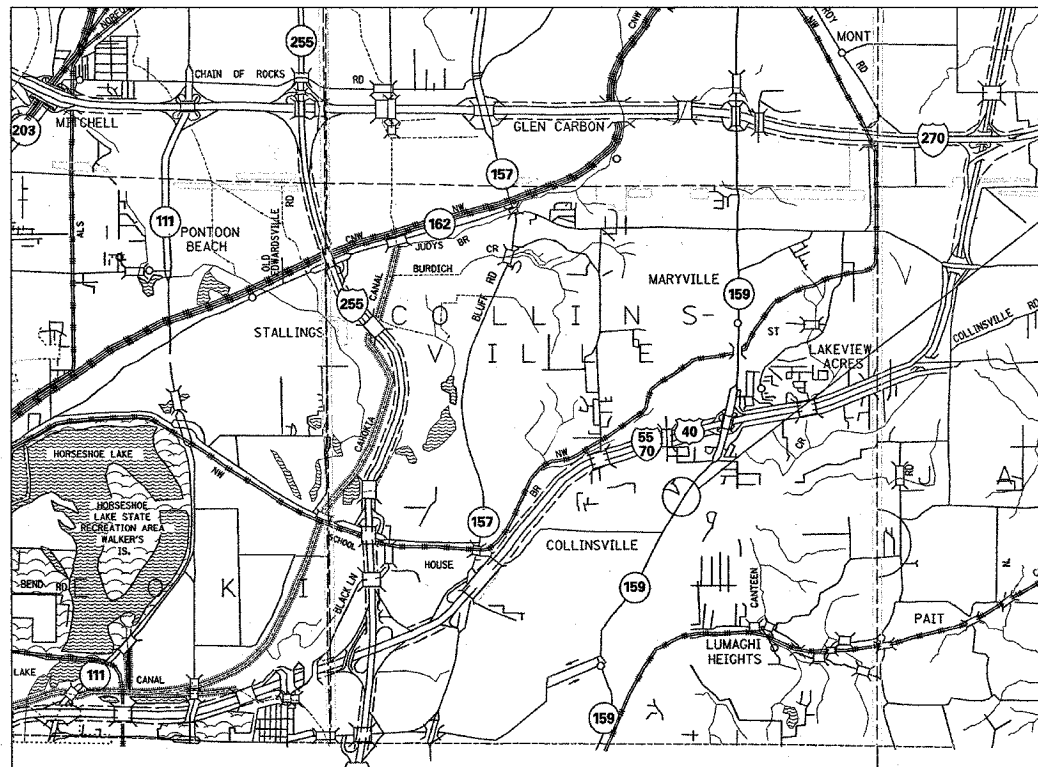
FAP ROUTE 600 (IL 159)
SECTION 30-ITS-1
MADISON COUNTY
TRAFFIC SIGNAL INSTALLATION
AT IL 159 AND CAMELOT DRIVE
IN COLLINSVILLE

FOR INDEX OF SHEETS, SEE SHEET NO. 2

D-98-084-05



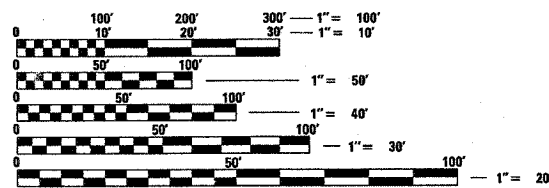
C-98-105-05



PROJECT LOCATION
IL 159 AND CAMELOT DR.
LAT: 38.69580
LONG: -89.96834

PROJECT ENGINEER: WENDA SOUTHERLAND (618) 346-3159
SQUAD LEADER: GREG HANCOCK (618) 346-3195

MICROFILMED _____
REEL NUMBER _____
AWARDED _____
RESIDENT ENGINEER _____
AS BUILT CHANGES WERE MADE
ON THE FOLLOWING SHEETS



FULL SIZE PLANS HAVE BEEN PREPARED USING STANDARD
ENGINEERING SCALES. REDUCED SIZED PLANS WILL NOT
CONFORM TO STANDARD SCALES. IN MAKING MEASUREMENTS
ON REDUCED PLANS, THE ABOVE SCALES MAY BE USED.

J.U.L.I.E.
JOINT UTILITY LOCATION INFORMATION FOR EXCAVATION
1-800-892-0123



DESIGN DESIGNATION
OTHER PRINCIPAL ARTERIAL

ADT
2005 = 22,100
MUSU = 5.9%

NOT TO SCALE

GROSS LENGTH = 385ft
NET LENGTH = 385ft

CONTRACT NO. 76941

STATE OF ILLINOIS
DEPARTMENT OF TRANSPORTATION
DIVISION OF HIGHWAYS

SUBMITTED Feb 10 2006
May C. Lamm
DEPUTY DIRECTOR OF HIGHWAYS
REGION FIVE ENGINEER

March 24, 2006
Mike Hine
ENGINEER OF DESIGN AND ENVIRONMENT

March 24, 2006
Milton R. Sepp
DIRECTOR, DIVISION OF HIGHWAYS

**PRINTED BY THE AUTHORITY
OF THE STATE OF ILLINOIS**

F.A.P. RTE.	SECTION	COUNTY	TOTAL SHEETS	SHEET NO.
600	30-1TS-1	MADISON	17	2
STA.	TO STA.			
FED. ROAD DIST. NO.	ILLINOIS	FED. AID PROJECT		

GENERAL NOTES

1. THE STANDARDS AND REVISIONS NUMBERS LISTED APPLY TO THIS PROJECT.
2. IF ANY SECTION OR SUBSECTION MONUMENTS ARE ENCOUNTERED, THE ENGINEER SHALL BE NOTIFIED BEFORE SUCH MONUMENTS ARE REMOVED OR RESURFACED OVER. THE CONTRACTOR SHALL PROTECT AND CAREFULLY PRESERVE ALL PROPERTY MARKERS AND MONUMENTS UNTIL THE OWNER, AN AUTHORIZED SURVEYOR, OR AGENT HAS WITNESSED OR OTHERWISE REFERENCE THEIR LOCATION.
3. THE THICKNESS OF BITUMINOUS MIXTURES SHOWN IN THE PLANS IS THE NOMINAL THICKNESS. DEVIATIONS FROM THE NOMINAL THICKNESS WILL BE PERMITTED WHEN SUCH DEVIATIONS OCCUR DUE TO IRREGULARITIES IN THE EXISTING SURFACE ON WHICH THE BITUMINOUS MIXTURE IS PLACED.
4. THE FOLLOWING MIXTURE REQUIREMENTS ARE APPLICABLE FOR THIS PROJECT.

MIXTURE REQUIREMENTS	
MIXTURE USE	SURFACE
AC/PG	PG 64-22
RAP% (MAX)	10%
DESIGN AIR VOIDS	4.0% @ Ndes=70
MIX COMPOSITION (GRADATION MIXTURE)	
FRICITION. AGG	MIXTURE "C"

5. THE CONTRACTOR SHALL VERIFY ALL DIMENSIONS AND CONDITIONS IN THE FIELD PRIOR TO CONSTRUCTION AND ORDERING OF MATERIALS.
6. NO OVERNIGHT LANE CLOSURES WILL BE ALLOWED.
7. ILLINOIS STATE LAW REQUIRES A 48-HOUR NOTICE BE GIVEN TO UTILITIES BEFORE DIGGING. FIELD MARKING OF FACILITIES MAY BE OBTAINED BY CONTACTING J.U.L.I.E. OR FOR NON-MEMBERS, THE UTILITY COMPANY DIRECTLY. AGENCIES KNOWN TO HAVE FACILITIES WITHIN THE PROJECT AREA ARE AS FOLLOWS
 - * AMEREN-IP
 - * AT&T CORPORATION
 - * CHARTER COMMUNICATIONS, INC.
 - * CITY OF COLLINSVILLE
 - * SBC
 - * CITY OF TROY
 MEMBERS OF J.U.L.I.E. (800) 892-0123 ARE INDICATED BY *. NON-J.U.L.I.E. MEMBERS MUST BE NOTIFIED DIRECTLY.
8. "ROAD CONSTRUCTION AHEAD" SIGNS SHALL BE PLACED AT ENTRANCES AND SIDE STREETS WHERE WORK IS BEING CONDUCTED AS DIRECTED BY THE RESIDENT ENGINEER. ALL CONSTRUCTION SIGN SHALL BE FLORESCENT ORANGE. THIS SHALL BE INCLUDED IN THE COST OF THE TRAFFIC CONTROL AND PROTECTION.
9. ALL TEMPORARY PAVEMENT MARKING WILL BE PLACED IN SUCH A MANNER SO AS NOT TO INTERFERE WITH THE PLACEMENT OF PERMANENT PAVEMENT MARKINGS.
10. STOP SIGN ON CAMELOT TO BE REMOVED BY STATE MAINTENANCE.
11. THE EXISTING PEDESTRIAN TRAFFIC SIGNAL SHALL REMAIN IN OPERATION UNTIL THE NEW TRAFFIC SIGNAL INSTALLATION IS READY FOR OPERATION.
12. ALL EARTHWORK SHALL BE INCLUDED IN THE COST OF ASSOCIATED PAY ITEMS.

INDEX OF SHEETS

- 1 COVER SHEET
- 2 INDEX OF SHEETS, GENERAL NOTES, AND STANDARDS
- 3-4 SUMMARY OF QUANTITIES
- 5 TYPICAL SECTIONS
- 6 REMOVAL PLAN
- 7 PLAN VIEW
- 8 INTERSECTION LAYOUT PLAN
- 9 PLAN AND PROFILE
- 10 PAVEMENT MARKING PLAN
- 11 EROSION CONTROL PLAN
- 12 ELECTRICAL SUMMARY OF QUANTITIES
- 13 ELECTRICAL GENERAL NOTES, LEGEND, SCHEDULE, AND DETAIL
- 14 IL 159 AND CAMELOT DRIVE TRAFFIC SIGNAL PLAN
- 15 IL 159 AND CAMELOT DRIVE CABLE DIAGRAM
- 16 BORINGS
- 17 PLAT OF HIGHWAYS

STANDARDS

000001-04	729001
424001-04	780001-01
606001-02	781001-02
701426-02	814001
701602-02	814006
701801-03	877001-02
702001-06	878001-04
720001	880006
720006	886001
720016-01	886006

COMMITMENTS

THE EXISTING TRAFFIC SIGNAL EQUIPMENT TO BE REMOVED SHALL BECOME THE PROPERTY OF THE CITY OF COLLINSVILLE. SEE SPECIAL PROVISION "REMOVE EXISTING TRAFFIC SIGNAL EQUIPMENT".

REVISIONS	
NAME	DATE

ILLINOIS DEPARTMENT OF TRANSPORTATION

TYPICAL SECTIONS

FAP ROUTE 600 (IL 159)
SECTION 30-1TS-1
MADISON COUNTY

SCALE: VERT.
DATE: HORIZ.

DRAWN BY
CHECKED BY

PLOT DATE = #DATE#
FILE NAME = #FILE#
PLOT SCALE = #SCALE#
REFERENCE = #REF#

Rev.

SUMMARY OF QUANTITIES

F.A.P. RTE.	SECTION	COUNTY	TOTAL SHEETS	SHEET NO.
600	30-ITS-1	MADISON	17	3
STA.		TO STA.		
FED. ROAD DIST. NO.		ILLINOIS	FED. AID PROJECT	

SUMMARY OF QUANTITIES			CONSTRUCTION TYPE CODE			
CODE NO	ITEM	UNIT	TOTAL QUANTITIES	URBAN 1000-2A 100% STATE	URBAN Y031-1F 90% STATE 10% CITY	URBAN SFTY-1B 50% STATE 50% CITY
25000200	SEEDING, CLASS 2	ACRE	0.2	0.2		
25000400	NITROGEN FERTILIZER NUTRIENT	POUND	18	18		
25000500	PHOSPHORUS FERTILIZER NUTRIENT	POUND	18	18		
25000600	POTASSIUM FERTILIZER NUTRIENT	POUND	18	18		
25100115	MULCH, METHOD 2	ACRE	0.2	0.2		
28000250	TEMPORARY EROSION CONTROL SEEDING	POUND	11	11		
35102000	AGGREGATE BASE COURSE, TYPE B 8"	SQ YD	489	489		
X4006416	<i>BITUMINOUS CONCRETE SURFACE COURSE, SUPERPAVE, MIXTURE C N70</i>	TON	77	77		
42400100	PORTLAND CEMENT CONCRETE SIDEWALK 4 INCH	SQ FT	1098			1098
42400800	<i>DETECTABLE WARNINGS</i>	SQ FT	12	12		
44000100	PAVEMENT REMOVAL	SQ YD	357	357		
44000500	COMBINATION CURB AND GUTTER REMOVAL	FOOT	210	210		
44000600	SIDEWALK REMOVAL	SQ FT	253	253		
60605000	COMBINATION CONCRETE CURB AND GUTTER, TYPE B-6.24	FOOT	253	253		
67100100	MOBILIZATION	L SUM	1	1		
70102632	TRAFFIC CONTROL AND PROTECTION, STANDARD 701602	L SUM	1	1		
70102640	TRAFFIC CONTROL AND PROTECTION, STANDARD 701801	L SUM	1	1		
70103815	TRAFFIC CONTROL SURVEILLANCE	CAL DA	10	10		
70300100	SHORT-TERM PAVEMENT MARKING	FOOT	157	157		
70301000	WORK ZONE PAVEMENT MARKING REMOVAL	SQ FT	786	786		
* 72000100	SIGN PANEL - TYPE 1	SQ FT	44	44		
* 72900200	METAL POST - TYPE B	FOOT	41	41		
* 78001100	PAINT PAVEMENT MARKING - LETTERS AND SYMBOLS	SQ FT	47	47		
* 78001110	PAINT PAVEMENT MARKING - LINE 4"	FOOT	2255	2255		
* 78001150	PAINT PAVEMENT MARKING - LINE 12"	FOOT	189	189		
* 78001180	PAINT PAVEMENT MARKING - LINE 24"	FOOT	74	74		
* 78100100	RAISED REFLECTIVE PAVEMENT MARKER	EACH	22	22		
78300100	PAVEMENT MARKING REMOVAL	SQ FT	999	999		
78300200	RAISED REFLECTIVE PAVEMENT MARKER REMOVAL	EACH	30	30		
80500100	SERVICE INSTALLATION, TYPE A	EACH	1		1	
80801500	WOOD POLE, 25 FT., CLASS 5	EACH	1		1	
81000500	CONDUIT IN TRENCH, 1 1/2" DIA., GALVANIZED STEEL	FOOT	4		4	
81012300	CONDUIT IN TRENCH, 1" DIA., PVC	FOOT	86.5		86.5	

SUMMARY OF QUANTITIES			CONSTRUCTION TYPE CODE			
CODE NO	ITEM	UNIT	TOTAL QUANTITIES	URBAN 1000-2A 100% STATE	URBAN Y031-1F 90% STATE 10% CITY	URBAN SFTY-1B 50% STATE 50% CITY
81012500	CONDUIT IN TRENCH, 1 1/2" DIA., PVC	FOOT	529		529	
81012600	CONDUIT IN TRENCH, 2" DIA., PVC	FOOT	28		28	
81012800	CONDUIT IN TRENCH, 3" DIA., PVC	FOOT	29		29	
81018500	CONDUIT PUSHED, 2" DIA., GALVANIZED STEEL	FOOT	45		45	
81018600	CONDUIT PUSHED, 2 1/2" DIA., GALVANIZED STEEL	FOOT	129		129	
81400400	CONCRETE HANDHOLE	EACH	5		5	
81400600	CONCRETE DOUBLE HANDHOLE	EACH	1		1	
81500200	TRENCH AND BACKFILL FOR ELECTRICAL WORK	FOOT	658.5		658.5	
81702130	ELECTRIC CABLE IN CONDUIT, 600V (XLP-TYPE USE) 1/C NO. 6	FOOT	858.5		858.5	
85700200	FULL-ACTUATED CONTROLLER AND TYPE IV CABINET	EACH	1		1	
87301215	ELECTRIC CABLE IN CONDUIT, SIGNAL NO. 14 2C	FOOT	185.5		185.5	
87301225	ELECTRIC CABLE IN CONDUIT, SIGNAL NO. 14 3C	FOOT	199.5		199.5	
87301245	ELECTRIC CABLE IN CONDUIT, SIGNAL NO. 14 5C	FOOT	1440.5		1440.5	
87301255	ELECTRIC CABLE IN CONDUIT, SIGNAL NO. 14 7C	FOOT	1185		1185	
87301305	ELECTRIC CABLE IN CONDUIT, LEAD-IN, NO. 14 1 PAIR	FOOT	2269		2269	
87301815	ELECTRIC CABLE IN CONDUIT, SERVICE, NO. 6 3 C	FOOT	14		14	
87700180	STEEL MAST ARM ASSEMBLY AND POLE, 28 FT.	EACH	1		1	
87700220	STEEL MAST ARM ASSEMBLY AND POLE, 36 FT.	EACH	2		2	
87700240	STEEL MAST ARM ASSEMBLY AND POLE, 40 FT.	EACH	1		1	
87800200	CONCRETE FOUNDATION, TYPE D	FOOT	3		3	
87800400	CONCRETE FOUNDATION, TYPE E 30-INCH DIAMETER	FOOT	10		10	
87800415	CONCRETE FOUNDATION, TYPE E 36-INCH DIAMETER	FOOT	35		35	
88200100	TRAFFIC SIGNAL BACKPLATE	EACH	10		10	
88500100	INDUCTIVE LOOP DETECTOR	EACH	13		13	
88600100	DETECTOR LOOP, TYPE I	FOOT	1795.5		1795.5	
88800100	PEDESTRIAN PUSH-BUTTON	EACH	2		2	
89502375	REMOVE EXISTING TRAFFIC SIGNAL EQUIPMENT	EACH	1		1	
89502385	REMOVE EXISTING CONCRETE FOUNDATION	EACH	3		3	

* SPECIALTY ITEMS

Rev.

PLT DATE = #DATE#
FILE NAME = #FILE#
PLT SCALE = #SCALE#
REFERENCE = #REF#

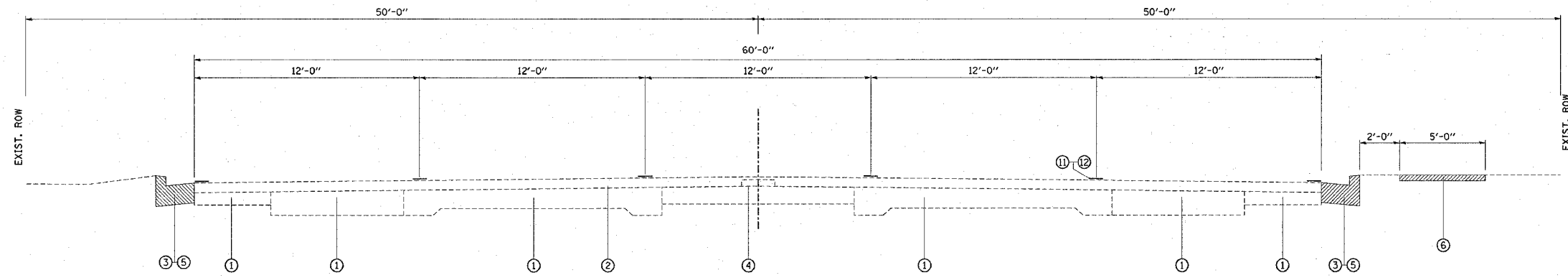
SUMMARY OF QUANTITIES

F.A.P. RTE.	SECTION	COUNTY	TOTAL SHEETS	SHEET NO.
600	30-ITS-1	MADISON	17	4
STA.		TO STA.		
FED. ROAD DIST. NO.		ILLINOIS FED. AID PROJECT		

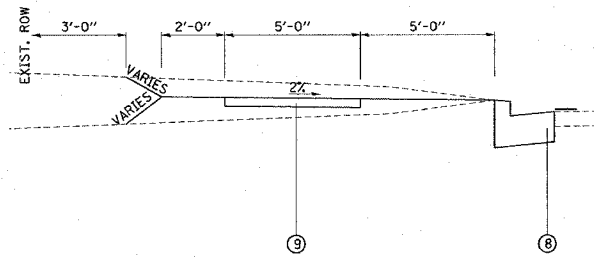
SUMMARY OF QUANTITIES			TOTAL QUANTITIES	CONSTRUCTION TYPE CODE		
CODE NO	ITEM	UNIT		URBAN 1000-2A 100% STATE	URBAN Y031-1F 90% STATE 10% CITY	URBAN SFTY-1B 50% STATE 50% CITY
X8801300	SIGNAL HEAD ,POLYCARBONATE, LED, 1-FACE, 3-SECTION, BRACKET MOUNTED	EACH	4		4	
X8801310	SIGNAL HEAD ,POLYCARBONATE, LED, 1-FACE, 3-SECTION, MAST ARM MOUNTED	EACH	6		6	
X8801350	SIGNAL HEAD ,POLYCARBONATE, LED, 1-FACE, 4-SECTION, MAST ARM MOUNTED	EACH	2		2	
X8801395	SIGNAL HEAD ,POLYCARBONATE, LED, 1-FACE, 5-SECTION, BRACKET MOUNTED	EACH	2		2	
X8801400	SIGNAL HEAD ,POLYCARBONATE, LED, 1-FACE, 5-SECTION, MAST ARM MOUNTED	EACH	2		2	
X8810395	PEDESTRIAN SIGNAL HEAD, POLYCARBONATE, LED, 1-FACE, BRACKET MOUNTED	EACH	2		2	
X0325234	FURNISHING AND RE-STAKING PERMANENT EASEMENT CORNER	EACH	4	4		
X8801345	SIGNAL HEAD ,POLYCARBONATE, LED, 1-FACE, 4-SECTION, BRACKET MOUNTED	EACH	2		2	

SUMMARY OF QUANTITIES				TOTAL QUANTITIES	CONSTRUCTION TYPE CODE		
CODE NO	ITEM	UNIT					

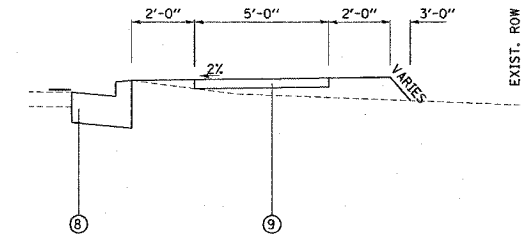
F.A.P. RTE.	SECTION	COUNTY	TOTAL SHEETS	SHEET NO.
600	30-ITS-1	MADISON	17	5
STA.		TO STA.		
FED. ROAD DIST. NO.	ILLINOIS	FED. AID PROJECT		



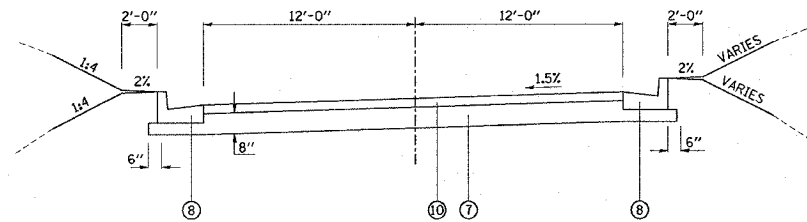
IL 159 TYPICAL SECTION
STA 607+90 TO STA 611+75



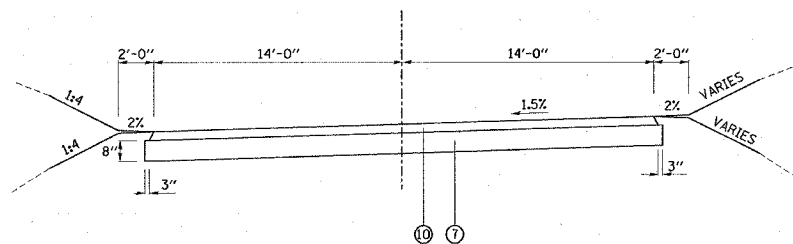
LEFT SIDE
STA 608+09 TO STA 609+75



RIGHT SIDE
STA 608+04 TO STA 608+18
STA. 609+38 TO STA. 609+75



RELOCATED ENTRANCE
STA. 12+00 TO STA. 12+30



RELOCATED ENTRANCE
STA. 12+30 TO STA. 13+13

- LEGEND
- ① EXISTING PAV'T STRUCTURE
 - ② EXISTING RESURFACING - $\pm 3\frac{3}{4}$ " (ESTIMATED)
 - ③ EXISTING CURB & GUTTER
 - ④ EXISTING P.C.C. MEDAIN
 - ⑤ PROPOSED COMBINATION CURB & GUTTER REMOVAL
 - ⑥ PROPOSED SIDEWALK REMOVAL
 - ⑦ PROPOSED AGGREGATE BASE COURSE T-B 8"
 - ⑧ PROPOSED COMBINATION CURB & GUTTER T-B 6.24
 - ⑨ PROPOSED PORTLAND CEMENT CONCRETE SIDEWALK 4"
 - ⑩ PROPOSED INCIDENTAL BITUMINOUS 3"
 - ⑪ PROPOSED PAVEMENT MARKING REMOVAL
 - ⑫ PROPOSED PAINT PAVEMENT MARKING

REVISIONS	
NAME	DATE

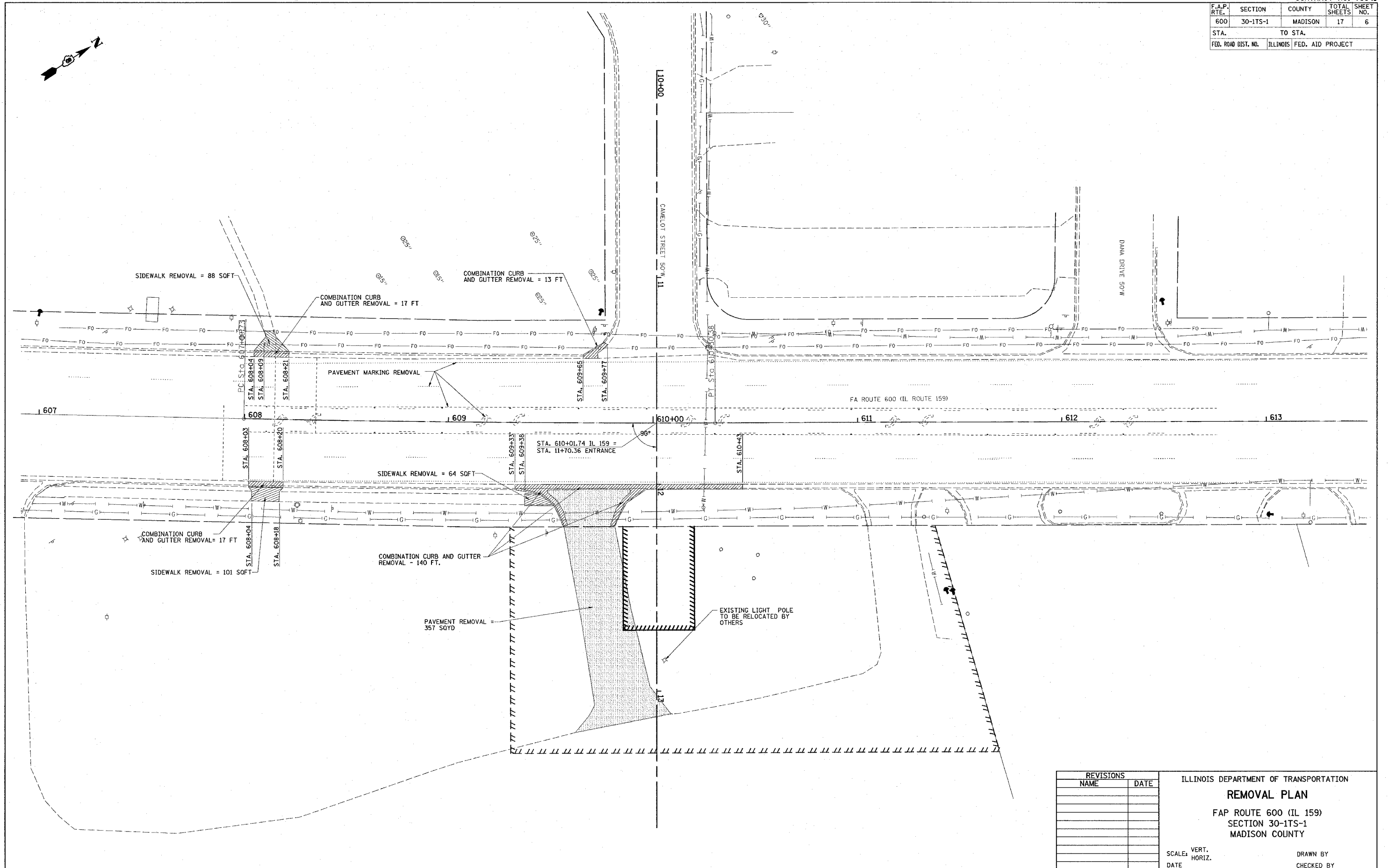
ILLINOIS DEPARTMENT OF TRANSPORTATION
TYPICAL SECTIONS
FAP ROUTE 600 (IL 159)
SECTION 30-ITS-1
MADISON COUNTY

SCALE: VERT. _____
HORIZ. _____

DATE _____ DRAWN BY _____
CHECKED BY _____

PLOT DATE = #DATE#
PLOT SCALE = #SCALE#
REFERENCE = #REF#

F.A.P. RTE.	SECTION	COUNTY	TOTAL SHEETS	SHEET NO.
600	30-1TS-1	MADISON	17	6
STA.		TO STA.		
FED. ROAD DIST. NO.		ILLINOIS FED. AID PROJECT		



PLOT DATE = #DATE#
 FILE NAME = #FILE#
 PLOT SCALE = #SCALE#
 REFERENCE = #REF#

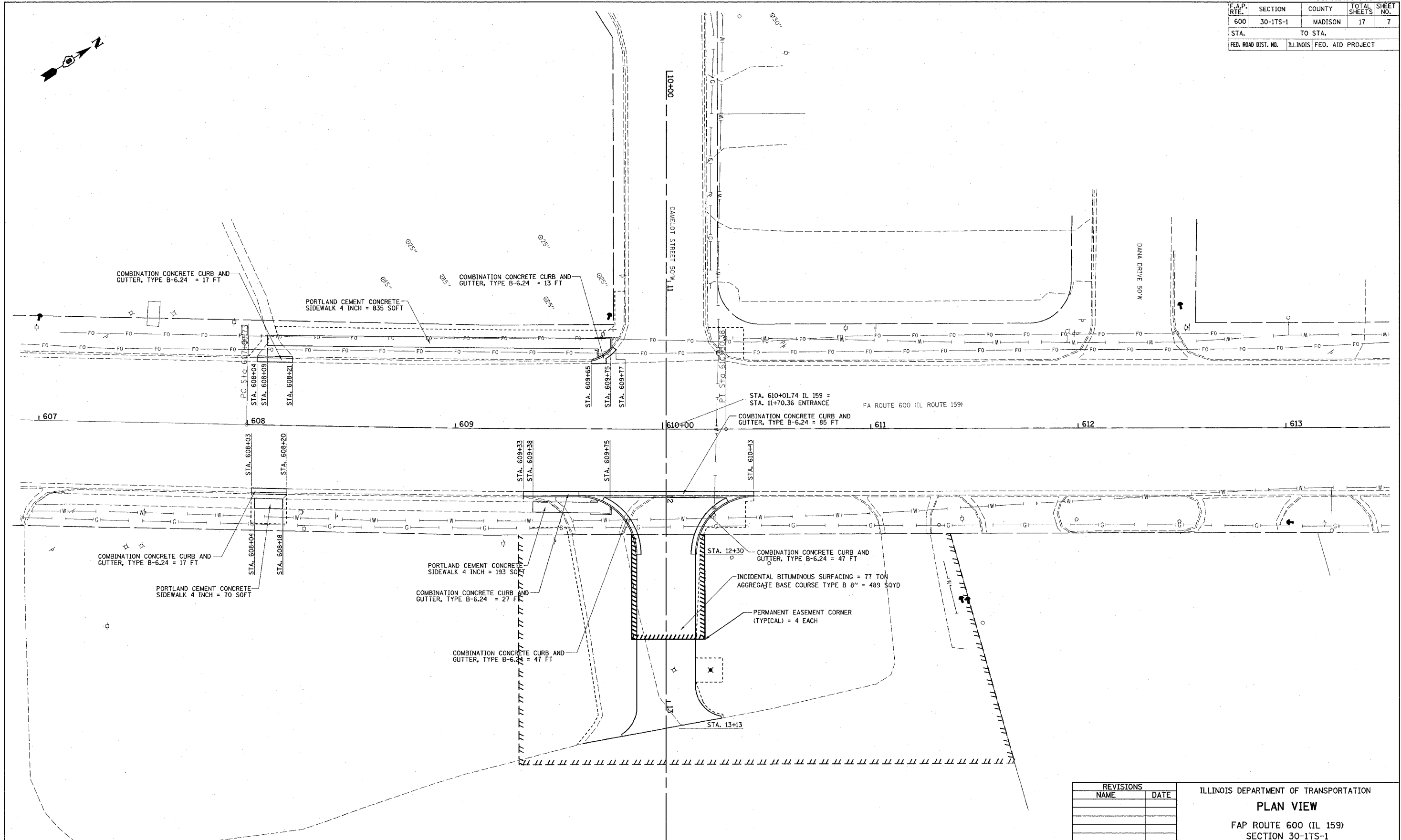
REVISIONS	
NAME	DATE

ILLINOIS DEPARTMENT OF TRANSPORTATION
REMOVAL PLAN
 FAP ROUTE 600 (IL 159)
 SECTION 30-1TS-1
 MADISON COUNTY

SCALE: VERT. _____
 HORIZ. _____
 DATE _____

DRAWN BY _____
 CHECKED BY _____

F.A.P. RTE.	SECTION	COUNTY	TOTAL SHEETS	SHEET NO.
600	30-ITS-1	MADISON	17	7
STA. TO STA.		FED. ROAD DIST. NO. ILLINOIS FED. AID PROJECT		



PLOT DATE = 8/2/88
 FILE NAME = #FILEL#
 SCALE = 1"=40'
 REFERENCE = #REF#

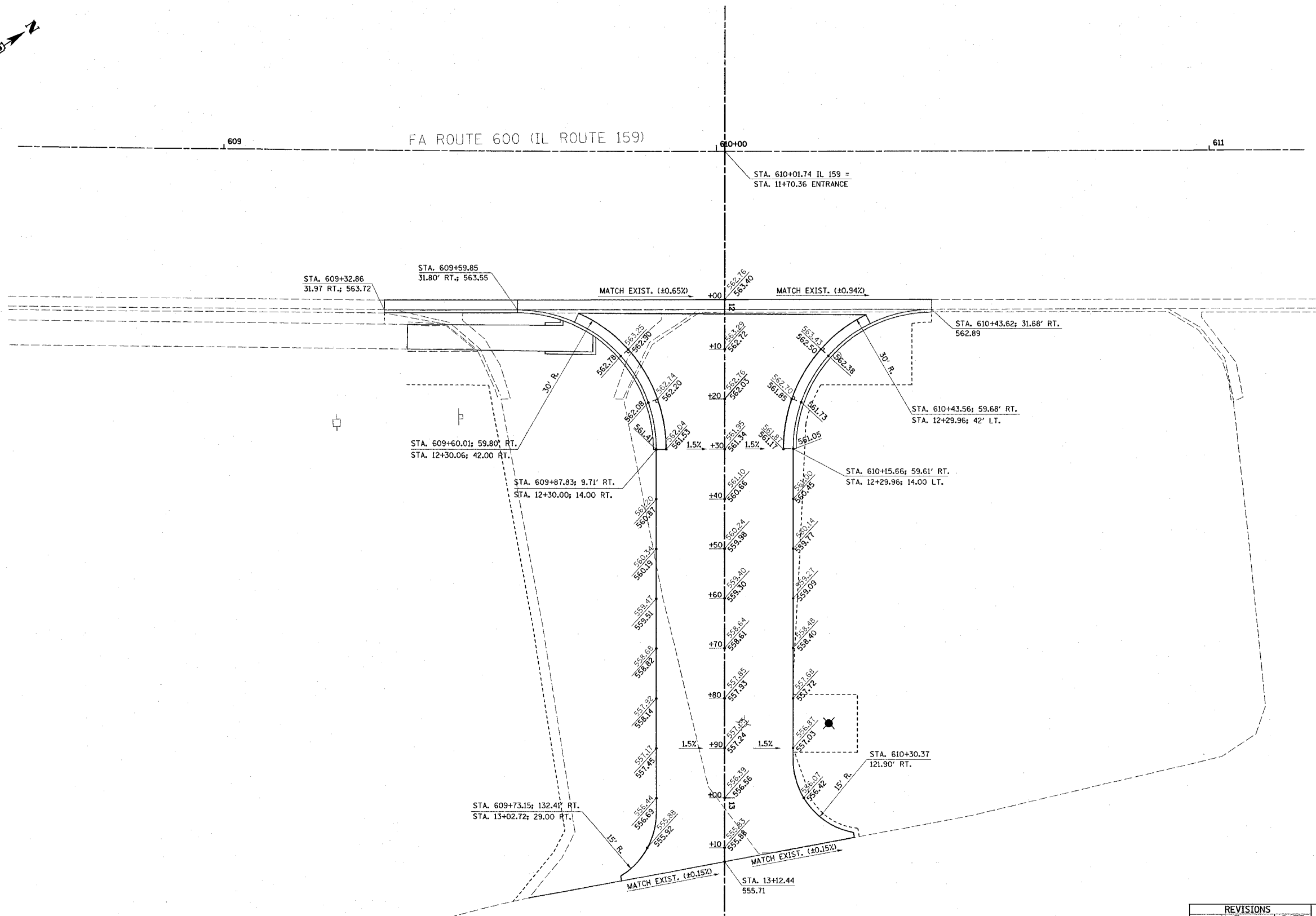
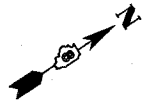
REVISIONS	
NAME	DATE

ILLINOIS DEPARTMENT OF TRANSPORTATION
PLAN VIEW
 FAP ROUTE 600 (IL 159)
 SECTION 30-ITS-1
 MADISON COUNTY

SCALE: VERT. _____
 HORIZ. _____
 DATE _____

DRAWN BY _____
 CHECKED BY _____

F.A.P. RTE.	SECTION	COUNTY	TOTAL SHEETS	SHEET NO.
600	30-ITS-1	MADISON	17	8
STA.		TO STA.		
FED. ROAD DIST. NO.		ILLINOIS		FED. AID PROJECT



PLOT DATE = #DATE*
 PLOT SCALE = #SCALE*
 REFERENCE = #REF*

REVISIONS	
NAME	DATE

ILLINOIS DEPARTMENT OF TRANSPORTATION
INTERSECTION LAYOUT DETAIL
 FAP ROUTE 600 (IL 159)
 SECTION 30-ITS-1
 MADISON COUNTY

SCALE: VERT. _____
 HORIZ. _____

DATE _____ DRAWN BY _____
 CHECKED BY _____

F.A.P. RTE.	SECTION	COUNTY	TOTAL SHEETS	SHEET NO.
600	30-1TS-1	MADISON	17	9
STA. 600		TO STA.		
FED. ROAD DIST. NO.	ILLINOIS	FED. AID PROJECT		

PLAN

BY	DATE

SURVEYED
ALIGNED
CHECKED
ROAD FILE NAME

NOTE BOOK NO. CHECKED
NO. DATE

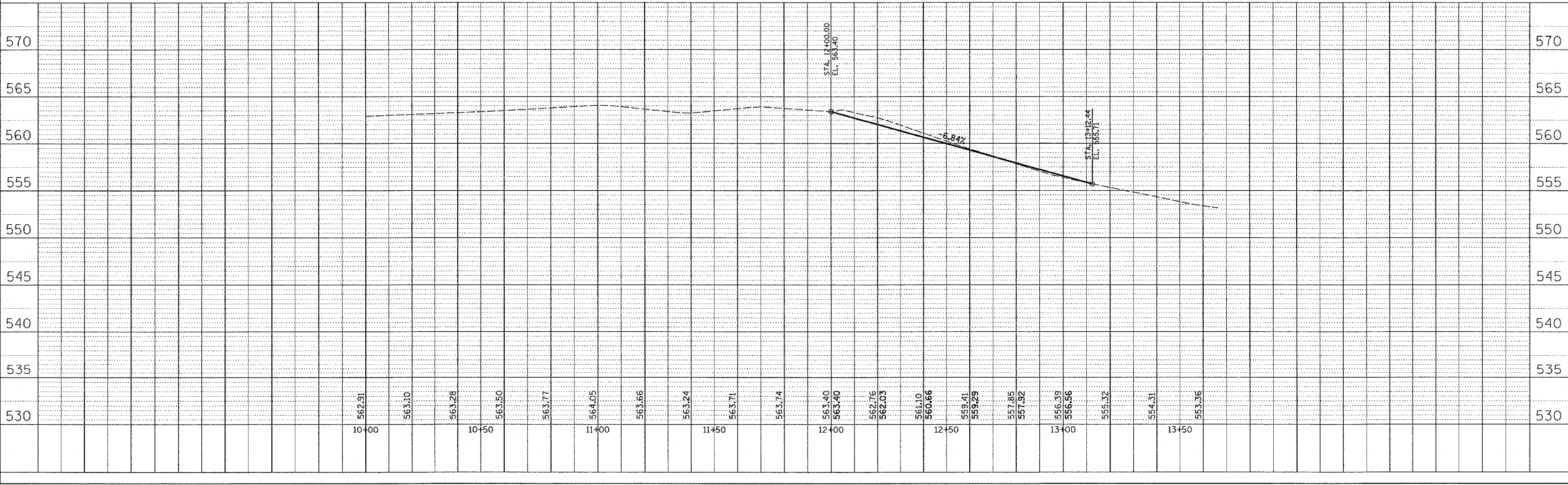
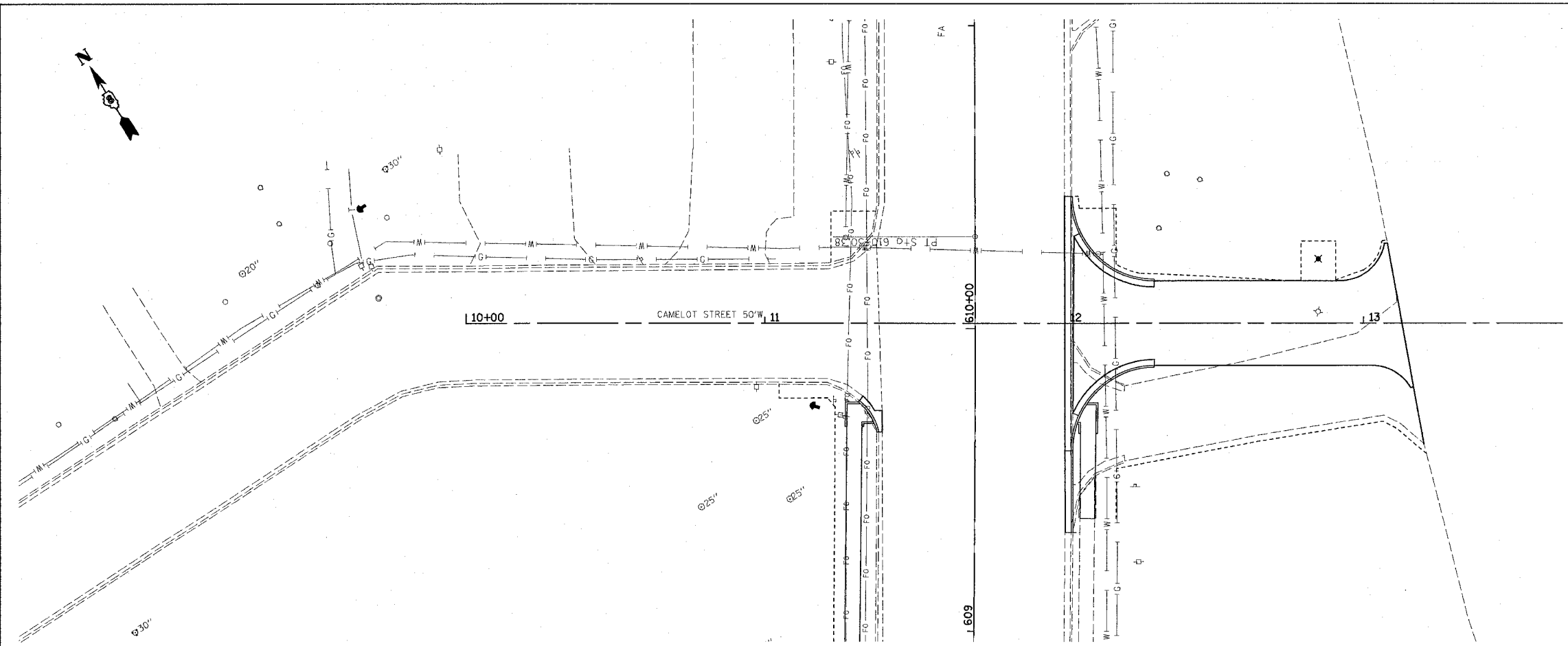
PROFILE

BY	DATE

SURVEYED
GRADES CHECKED
STATION USE NOTATION CHKD

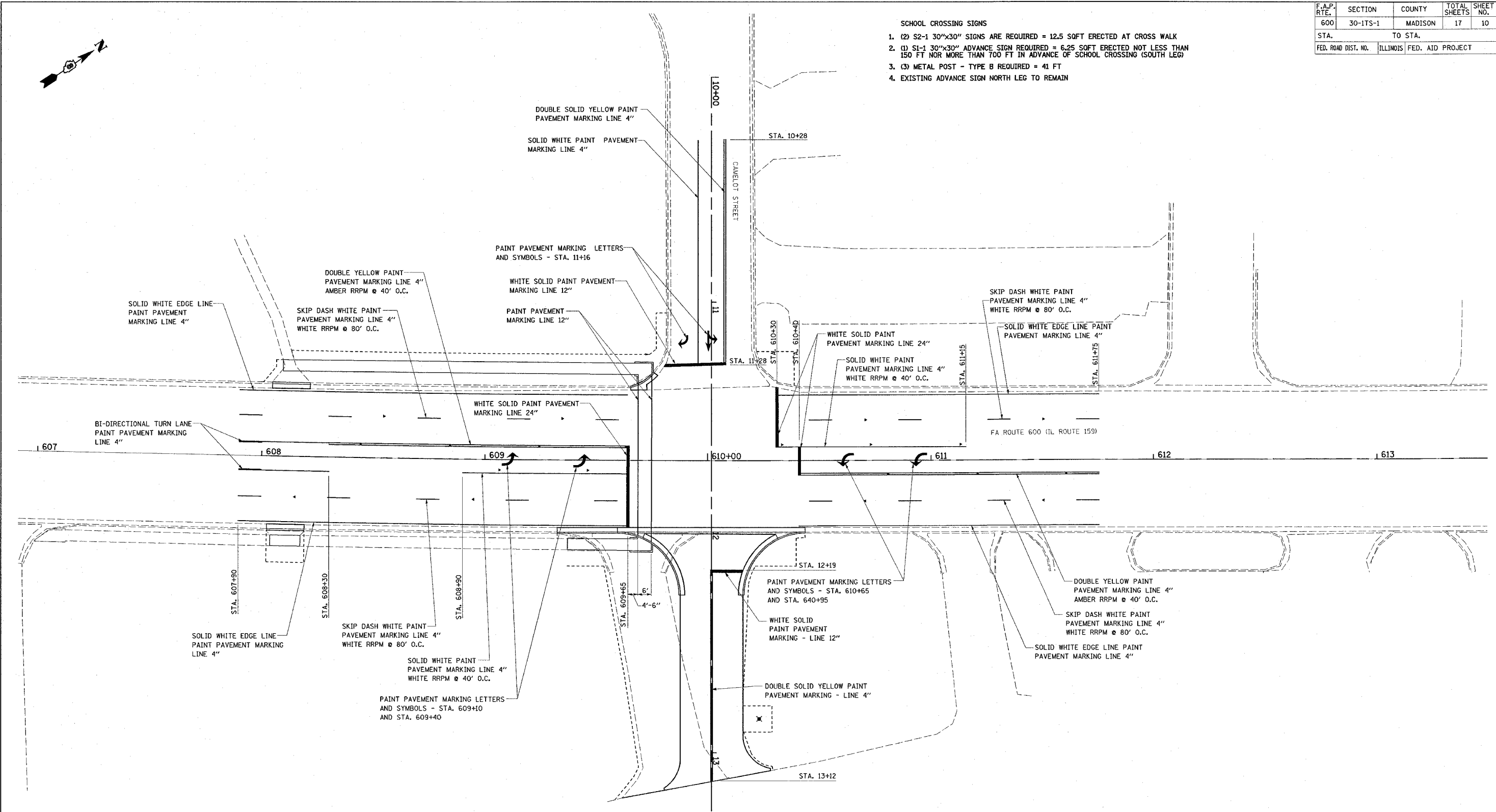
NOTE BOOK NO. CHECKED
NO. DATE

PLOT DATE = 08/07/11
FILE NAME = 081109
SCALE = 1" = 20'
REFERENCE = 081109



F.A.P. RTE.	SECTION	COUNTY	TOTAL SHEETS	SHEET NO.
600	30-ITS-1	MADISON	17	10
STA. 600		TO STA. 613		
FED. ROAD DIST. NO.		ILLINOIS	FED. AID PROJECT	

- SCHOOL CROSSING SIGNS**
- (2) S2-1 30"x30" SIGNS ARE REQUIRED = 12.5 SQFT ERRECTED AT CROSS WALK
 - (1) S1-1 30"x30" ADVANCE SIGN REQUIRED = 6.25 SQFT ERRECTED NOT LESS THAN 150 FT NOR MORE THAN 700 FT IN ADVANCE OF SCHOOL CROSSING (SOUTH LEG)
 - (3) METAL POST - TYPE B REQUIRED = 41 FT
 - EXISTING ADVANCE SIGN NORTH LEG TO REMAIN



STA.	LOCATION TO STA.	SKIP DASH YELLOW 4" (FOOT)	SOLID YELLOW 4" (FOOT)	SOLID WHITE 4" (FOOT)	SOLID WHITE 12" (FOOT)	SOLID STOP BAR 24" (FOOT)	LETTERS AND SYMBOLS (SQ FT)	RAISED REFLECTIVE PAVEMENT MARKER (EACH)	RAISED REFLECTIVE PAVEMENT MARKER REMOVAL (EACH)
607+90	TO 610+01	103	330	515	148	36	13	12	15
610+01	TO 611+75	72	270	375		38	13	10	15
	CAMELOT DRIVE ENTRANCE	100	200	100	27		21		
		190			14				
	SUB-TOTAL	275	990	990					
	TOTAL		2255		189	74	47	22	30

STA to STA	Lane	WHITE SKIP DASH LANE LINE 4" (SQ FT)	WHITE SOLID LANE LINE 4" (SQ FT)	YELLOW SOLID 4" (SQ FT)	YELLOW SKIP DASH 4" (SQ FT)	WHITE STOP BAR 24" (SQ FT)	WHITE CROSS WALK 12" (SQ FT)	LEFT TURN LANE (SQ FT)
607+90 to 611+75	N.B.	32	128	128	32	72	60	
607+91 to 611+76	S.B.	32	128	128	32	72	60	
	LETTERS AND SYMBOLS							94
	TOTAL =							999

NAME	DATE

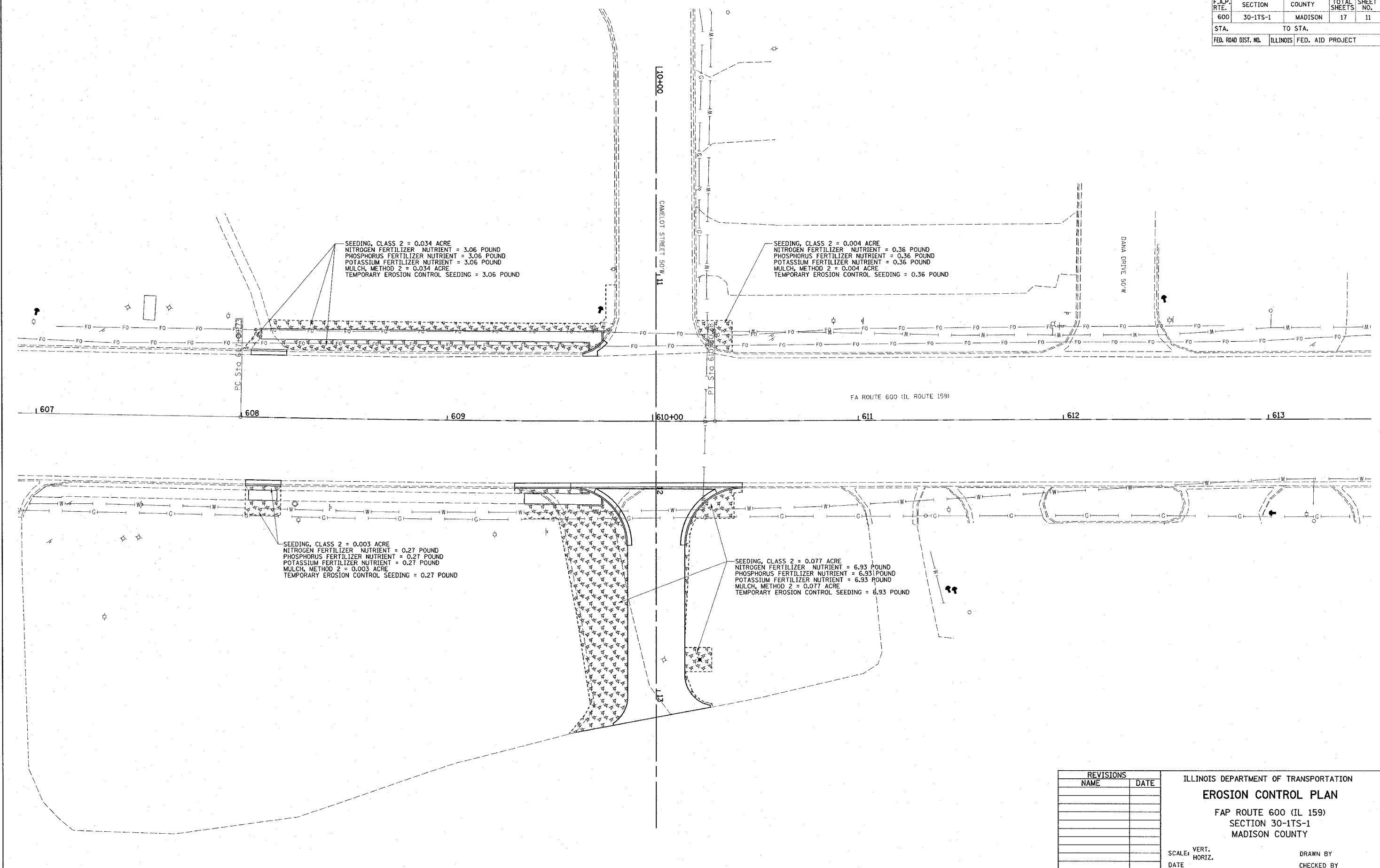
ILLINOIS DEPARTMENT OF TRANSPORTATION
PAVEMENT MARKING PLAN
 FAP ROUTE 600 (IL 159)
 SECTION 30-ITS-1
 MADISON COUNTY

SCALE: VERT. _____
 HORIZ. _____
 DATE _____

DRAWN BY _____
 CHECKED BY _____

PLOT DATE = #DATE#
 FILE NAME = #FILE#
 PLOT SCALE = #SCALE#
 REFERENCE = #REF#

F.A.P. RTE.	SECTION	COUNTY	TOTAL SHEETS	SHEET NO.
600	30-ITS-1	MADISON	17	11
STA. TO STA.		FED. ROAD DIST. NO. ILLINOIS FED. AID PROJECT		



PLOT DATE = #DATE#
 PLOT SCALE = #SCALE#
 USER NAME = #USER#

REVISIONS	
NAME	DATE

ILLINOIS DEPARTMENT OF TRANSPORTATION
EROSION CONTROL PLAN
 FAP ROUTE 600 (IL 159)
 SECTION 30-ITS-1
 MADISON COUNTY

SCALE: VERT. _____
 HORIZ. _____
 DATE _____

DRAWN BY _____
 CHECKED BY _____

SCHEDULE OF QUANTITIES

SCHEDULE OF QUANTITIES			TOTAL QUANTITIES	CONSTRUCTION TYPE CODE YO-31F		
CODE NO	ITEM	UNIT		-----	-----	-----
72000100	SIGN PANEL - TYPE 1	SQ FT	25			
80500100	SERVICE INSTALLATION, TYPE A	EACH	1			
80801500	WOOD POLE, 25 FT., CLASS 5	EACH	1			
81000500	CONDUIT IN TRENCH, 1 1/2" DIA., GALVANIZED STEEL	FOOT	4			
81012300	CONDUIT IN TRENCH, 1" DIA., PVC	FOOT	86.5			
81012500	CONDUIT IN TRENCH, 1 1/2" DIA., PVC	FOOT	529			
81012600	CONDUIT IN TRENCH, 2" DIA., PVC	FOOT	28			
81012700	CONDUIT IN TRENCH, 2 1/2" DIA., PVC	FOOT	6			
81012800	CONDUIT IN TRENCH, 3" DIA., PVC	FOOT	29			
81018500	CONDUIT PUSHED, 2" DIA., GALVANIZED STEEL	FOOT	45			
81018600	CONDUIT PUSHED, 2 1/2" DIA., GALVANIZED STEEL	FOOT	129			
81400400	CONCRETE HANDHOLE	EACH	5			
81400600	CONCRETE DOUBLE HANDHOLE	EACH	1			
81500200	TRENCH AND BACKFILL FOR ELECTRICAL WORK	FOOT	658.5			
81702130	ELECTRIC CABLE IN CONDUIT, 600V (XLP-TYPE USE) 1/C NO. 6	FOOT	858.5			
85700200	FULL-ACTUATED CONTROLLER AND TYPE IV CABINET	EACH	1			
87301215	ELECTRIC CABLE IN CONDUIT, SIGNAL NO. 14 2C	FOOT	185.5			
87301225	ELECTRIC CABLE IN CONDUIT, SIGNAL NO. 14 3C	FOOT	199.5			
87301245	ELECTRIC CABLE IN CONDUIT, SIGNAL NO. 14 5C	FOOT	1440.5			
87301255	ELECTRIC CABLE IN CONDUIT, SIGNAL NO. 14 7C	FOOT	1521			
87301305	ELECTRIC CABLE IN CONDUIT, LEAD-IN, NO. 14 1 PAIR	FOOT	2269			
87301815	ELECTRIC CABLE IN CONDUIT, SERVICE, NO. 6 3 C	FOOT	14			
87700180	STEEL MAST ARM ASSEMBLY AND POLE, 28 FT.	EACH	1			
87700220	STEEL MAST ARM ASSEMBLY AND POLE, 36 FT.	EACH	2			
87700240	STEEL MAST ARM ASSEMBLY AND POLE, 40 FT.	EACH	1			
87800200	CONCRETE FOUNDATION, TYPE D	FOOT	3			
87800400	CONCRETE FOUNDATION, TYPE E 30-INCH DIAMETER	FOOT	10			
87800415	CONCRETE FOUNDATION, TYPE E 36-INCH DIAMETER	FOOT	35			
88200100	TRAFFIC SIGNAL BACKPLATE	EACH	10			

SCHEDULE OF QUANTITIES			TOTAL QUANTITIES	CONSTRUCTION TYPE CODE YO-31F		
CODE NO	ITEM	UNIT		-----	-----	-----
88500100	INDUCTIVE LOOP DETECTOR	EACH	13			
88600100	DETECTOR LOOP, TYPE I	FOOT	1795.5			
88800100	PEDESTRIAN PUSH-BUTTON	EACH	2			
89502375	REMOVE EXISTING TRAFFIC SIGNAL EQUIPMENT	EACH	1			
89502385	REMOVE EXISTING CONCRETE FOUNDATION	EACH	3			
X8801300	SIGNAL HEAD, POLYCARBONATE, LED, 1-FACE, 3-SECTION, BRACKET MOUNTED	EACH	4			
X8801310	SIGNAL HEAD, POLYCARBONATE, LED, 1-FACE, 3-SECTION, MAST ARM MOUNTED	EACH	6			
X8801345	SIGNAL HEAD, POLYCARBONATE, LED, 1-FACE, 4-SECTION, BRACKET MOUNTED	EACH	2			
X8801350	SIGNAL HEAD, POLYCARBONATE, LED, 1-FACE, 4-SECTION, MAST ARM MOUNTED	EACH	2			
X8801385	SIGNAL HEAD, POLYCARBONATE, LED, 1-FACE, 5-SECTION, BRACKET MOUNTED	EACH	2			
X8801400	SIGNAL HEAD, POLYCARBONATE, LED, 1-FACE, 5-SECTION, MAST ARM MOUNTED	EACH	2			
X8810395	PEDESTRIAN SIGNAL HEAD, POLYCARBONATE, LED, 1-FACE, BRACKET MOUNTED	EACH	2			

F.A.P. RTE.	SECTION	COUNTY	TOTAL SHEETS	SHEET NO.
600	30-ITS-1	MADISON	17	13
STA. _____		TO STA. _____		
FED. ROAD DIST. NO. _____		ILLINOIS FED. AID PROJECT _____		

ELECTRICAL GENERAL NOTES

- ALL VEHICLE AND PEDESTRIAN SIGNAL HEADS SHALL HAVE 12" SECTIONS. MOUNTING HARDWARE SHALL BE UNPAINTED ALUMINUM. ALL BOLTS, SCREWS, NUTS AND WASHERS SHALL BE STAINLESS STEEL. ANTI-SEIZE PASTE COMPOUND SHALL BE USED ON ALL MOUNTING HARDWARE FIELD CONNECTIONS.
- BACKPLATES SHALL BE ABS PLASTIC.
- THE CONTROLLER CABINET SHALL BE UNPAINTED ALUMINUM.
- THE LOCATION OF MAST ARM SUPPORTS SHALL BE APPROVED BY THE ENGINEER BEFORE FOUNDATIONS ARE CONSTRUCTED. MAST ARM POLES SHALL BE LOCATED A MINIMUM OF 10 FEET FROM THE EDGE OF PAVEMENT OR 2 FEET FROM THE EDGE OF SHOULDER, WHICHEVER DISTANCE IS GREATER. IN CURBED SECTIONS, THE MAST ARM POLES SHALL BE LOCATED A MINIMUM OF 10 FEET FROM THE EDGE OF PAVEMENT OR 2 FEET FROM THE EDGE OF SHOULDER, WHICHEVER DISTANCE IS GREATER. IN CURBED SECTIONS, THE MAST ARM POLES SHALL BE LOCATED A MINIMUM OF 5 FEET FROM THE FACE OF THE CURB. THESE DISTANCES ARE TO THE NEAR FACE OF THE MAST ARM POLE.
- ALL TRAFFIC SIGNAL CABLES SHALL BE #14 AWG STRANDED COPPER UNLESS OTHERWISE SPECIFIED. TERMINAL ENDS SHALL HAVE CRIMPED-ON RING TONGUE CONNECTORS.
- THE LOCATION OF ALL DETECTOR LOOPS SHALL BE APPROVED BY THE ENGINEER BEFORE ANY SLOTS ARE SAWED IN THE PAVEMENT.
- DETECTOR LOOP LEAD-IN SPLICES SHALL BE MADE IN A HANDHOLE PER SECTION 873 OF THE STANDARD SPECIFICATIONS. CONDUCTORS SHALL BE SPLICED IN A RIGID MOLD FILLED WITH NON-HARDENING EPOXY FILLER. ROSIN-CORE SOLDER SHALL BE USED.
- CALL CARRY-OVER SHALL FUNCTION ONLY WHEN THE RELATED PHASES ARE IN THE GREEN MODE.
- ALL INDUCTIVE LOOP DETECTORS SUPPLIED FOR THIS PROJECT SHALL HAVE THE CAPACITY OF OPERATING WITH BOTH DELAY AND EXTENSION MODES ACTIVE, IF A TIME SETTING IS PROGRAMMED. THEY SHALL BE RACK MOUNTED.
- ALL HANDHOLES SHALL BE CAST-IN-PLACE PORTLAND CEMENT CONCRETE (PER ARTICLE 814.03(B)). THE CAST IN PLACE LEGEND IN THE COVER SHALL BE "TRAFFIC SIGNALS". SLOPE HANDHOLE COVERS TO MATCH PROPOSED GRADE ELEVATIONS.
- FINAL DEPTHS OF THE CONCRETE FOUNDATIONS FOR THE MAST ARM SUPPORT POLES ARE AS FOLLOWS:
 -36" DIAMETER
 N-E CORNER: 11'-0" DEEP
 S-E CORNER: 11'-0" DEEP
 S-W CORNER: 13'-0" DEEP
 -30" DIAMETER
 N-W CORNER: 10'-0" DEEP
- THE CONTRACTOR SHALL FABRICATE, DELIVER AND INSTALL TWO (2) STREET NAME SIGNS AT THE SPECIFIED LOCATIONS. THE SIGNS AND INSTALLATION SHALL CONFORM TO SECTION 720 OF THE STANDARD SPECIFICATIONS AND STANDARDS 720016 AND 720001.
- THE CONTRACTOR SHALL INSTALL THE STREET NAME SIGNS ON THE MAST ARMS AS FOLLOWS:
 ONE SIGN, NE QUAD., VISIBLE TO NB TRAFFIC
 ONE SIGN, SW QUAD., VISIBLE TO SB TRAFFIC

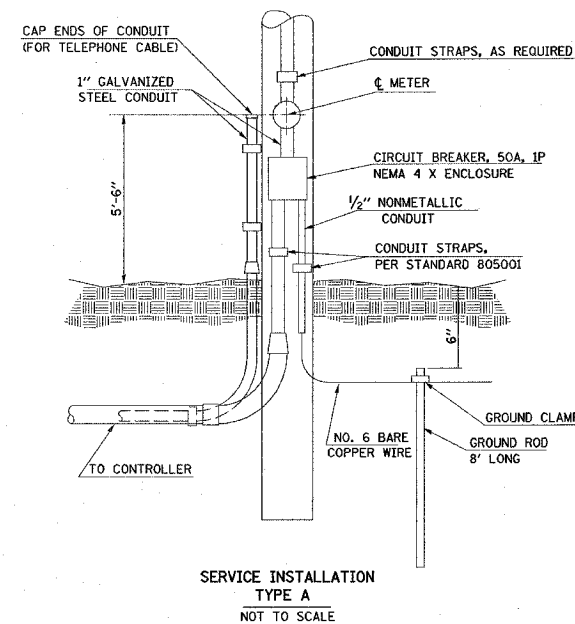
TRAFFIC SIGNALS LEGEND

- GSC GALVANIZED STEEL CONDUIT
- PVCC POLYVINYL CHLORIDE CONDUIT
- EXISTING TRAFFIC SIGNAL MAST ARM
- EXISTING HANDHOLE
- EXISTING DOUBLE HANDHOLE
- EXISTING DETECTOR LOOP
- EXISTING CONTROLLER
- EXISTING STREET NAME SIGN/TRAFFIC SIGN
- EXISTING SERVICE INSTALLATION
- EXISTING SIGNAL HEAD, PEDESTRIAN
- EXISTING PEDESTRIAN PUSHBUTTON DETECTOR
- EXISTING GALVANIZED STEEL CONDUIT
- PROPOSED SIGNAL HEAD WITH BACKPLATE, MAST ARM MOUNTED
- PROPOSED HANDHOLE
- PROPOSED DOUBLE HANDHOLE
- PROPOSED DETECTOR LOOP
- PROPOSED CONTROLLER
- PROPOSED PEDESTRIAN PUSHBUTTON DETECTOR
- PROPOSED SIGNAL HEAD, PEDESTRIAN
- PROPOSED CONDUIT: "T" TRENCH, "P" PUSH, SIZE SPECIFIED
- PROPOSED STREET NAME SIGN/TRAFFIC SIGN
- PROPOSED SERVICE INSTALLATION

DETECTOR LOOP REQUIREMENTS AND CALCULATIONS FOR IL 159 AND CAMELOT DRIVE

LOOP	PHASE (Ø)	LOOP SIZE (FT)	REQUIRED # OF TURNS	CALCULATED INDUCTANCE MICROHENRIES (µH)	CALCULATED RESISTANCE OHMS (Ω)
1. NB CCO A	6	6' X 6'	6	344.4	2.4
2. NB CCO B	6	6' X 6'	6	341.2	2.3
3. NB LT CD	1	6' X 50' Q	3-6-3	819.3	2.3
4. NB THRU CD A	6	6' X 50' Q	3-6-3	816.6	2.3
5. NB THRU CD B	6	6' X 50' Q	3-6-3	814.2	2.2
6. WB THRU LT CD	4	6' X 50' Q	3-6-3	825.8	2.5
7. SB CCO A	2	6' X 6'	6	338.4	2.3
8. SB CCO B	2	6' X 6'	6	335.4	2.2
9. SB LT CD	2	6' X 50' Q	3-6-3	812.1	2.2
10. SB THRU CD A	5	6' X 50' Q	3-6-3	809.0	2.1
11. SB THRU CD B	2	6' X 50' Q	3-6-3	805.7	2.0
12. EB LT CD	3	6' X 50' Q	3-6-3	796.7	1.8
13. EB THRU CD	3	6' X 50' Q	3-6-3	793.6	1.8

THE ABOVE VALUES ARE CALCULATED OF COMBINED LOOP AND LEAD-IN INDUCTANCE AND RESISTANCE. ACTUAL MEASURED VALUES SHOULD BE WITHIN +/- 20% OF THESE VALUES.



REVISIONS		DATE
NAME		

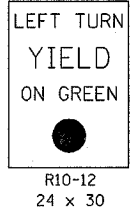
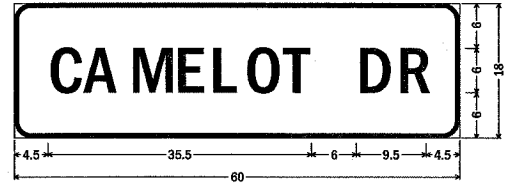
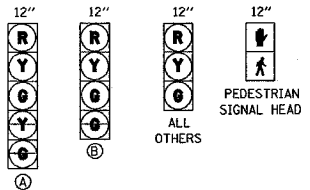
ILLINOIS DEPARTMENT OF TRANSPORTATION
ELECTRICAL GENERAL NOTES,
LEGEND AND DETAILS
FAP 600
SECTION 30-ITS-1
MADISON COUNTY

SCALE: VERT. _____
HORIZ. _____
DATE _____

DRAWN BY _____
CHECKED BY _____

PLOT DATE = DATE
 FILE NAME = FILE#
 PLOT SCALE = SCALE#
 REFERENCE = REF#

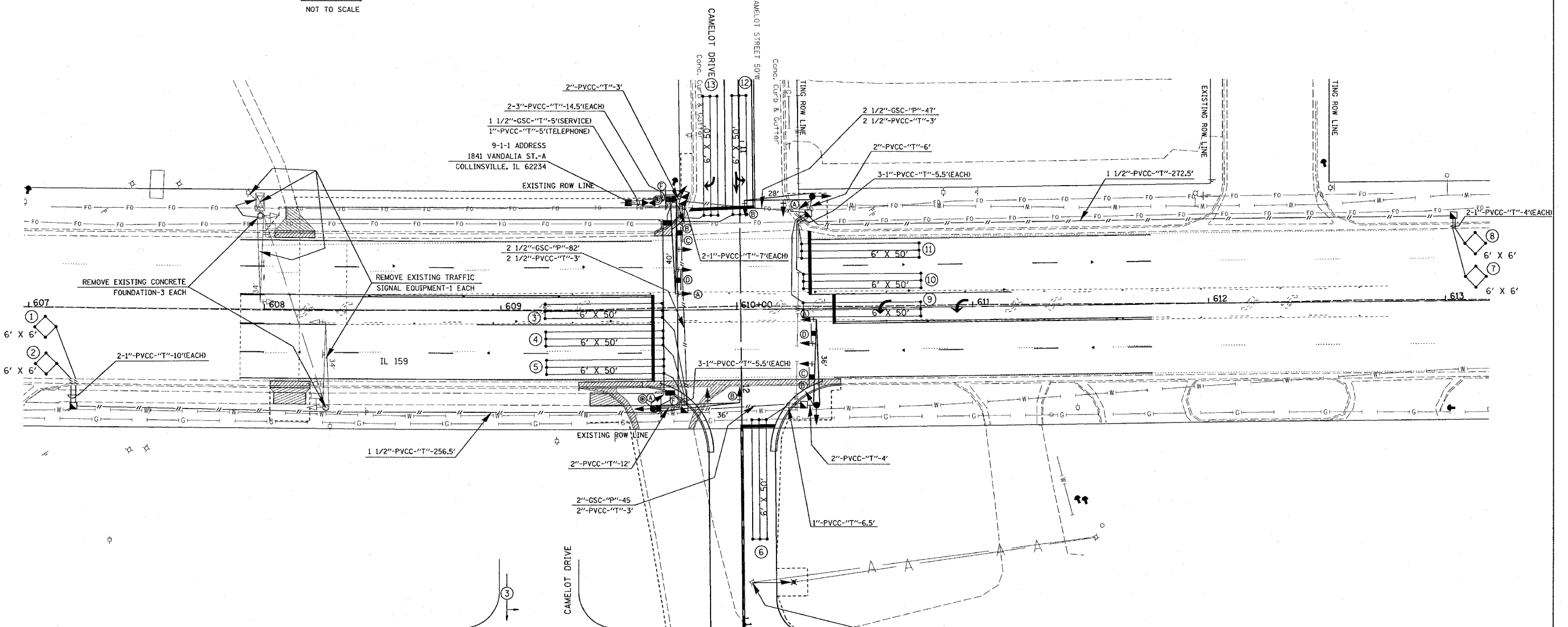
F.A.P. RTE.	SECTION	COUNTY	TOTAL SHEETS	SHEET NO.
600	31-1TS-1	MADISON	12	14
STA. _____		TO STA. _____		
FED. ROAD DIST. NO. _____ ILLINOIS FED. AID PROJECT				



STREET NAME SIGN
DETAIL C
NOT TO SCALE

DETAIL D
NOT TO SCALE

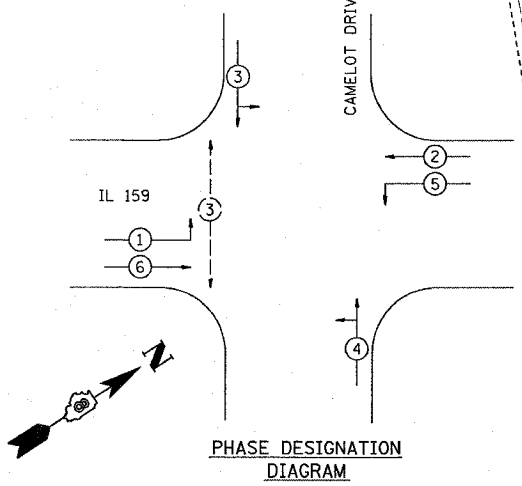
DETAIL E
NOT TO SCALE



FULL-ACTUATED CONTROLLER, IN TYPE IV CABINET

PROPOSED SEQUENCE OF OPERATION								
PHASE	1	2	3	4	5	6	7	8
MOVEMENT	→	←	↔	↔	←	→	NOT	NOT
CONCURRENT MOVEMENT PERMITTED	5 OR 6	5 OR 6	NONE	NONE	1 OR 2	1 OR 2	USED	USED

• PERMITTED UPON PEDESTRIAN ACTUATION, ONLY.

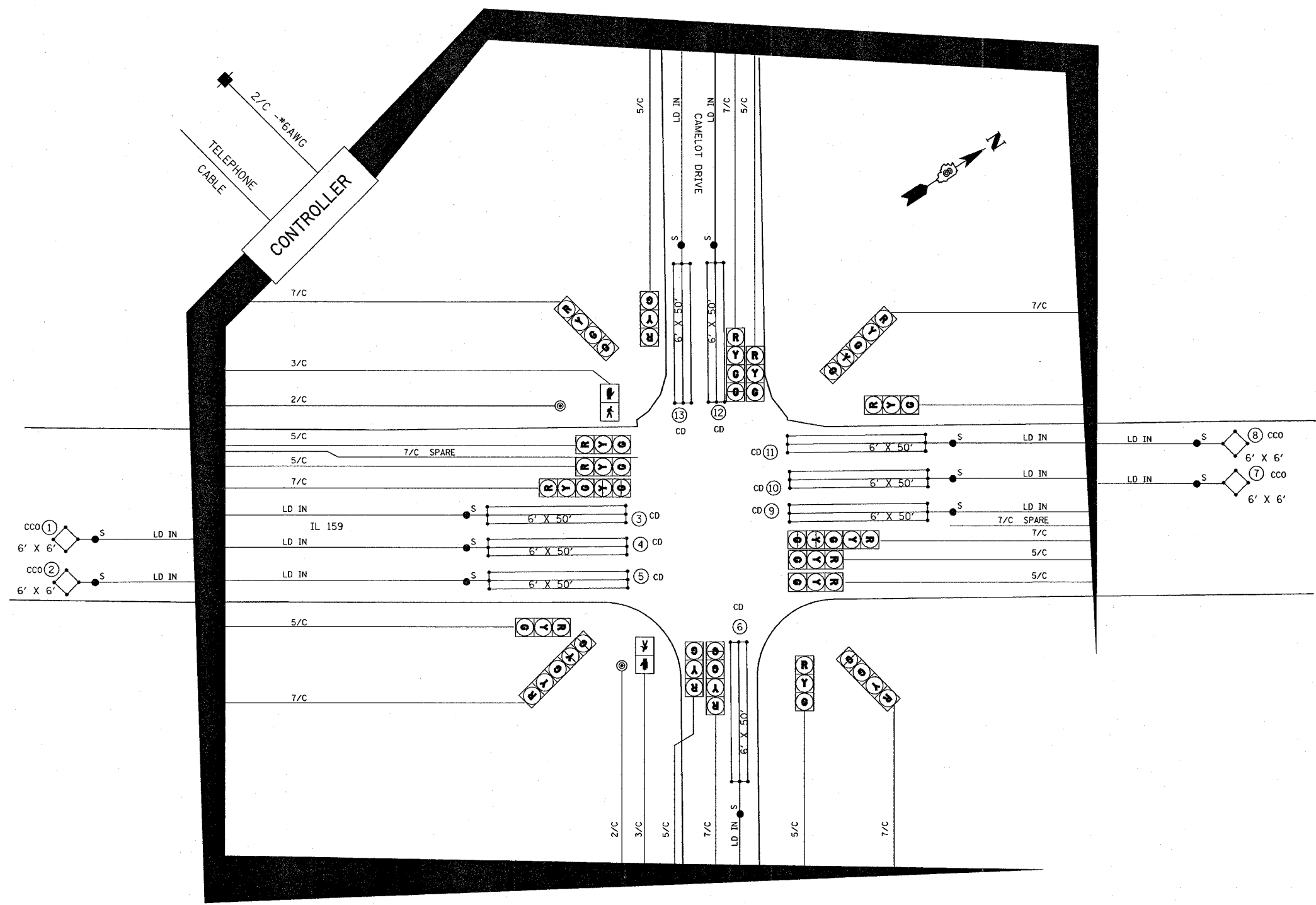


REVISIONS	
NAME	DATE

ILLINOIS DEPARTMENT OF TRANSPORTATION
 IL 159 AND CAMELOT DRIVE
 TRAFFIC SIGNAL PLAN
 FAP 600
 SECTION 30-1TS-1
 MADISON COUNTY
 SCALE: VERT. _____
 DATE _____
 DRAWN BY _____
 CHECKED BY _____

PLOT DATE = 08/15/08
 PLOT SCALE = AS SHOWN
 REFERENCE = REF#

F.A.P. RTE.	SECTION	COUNTY	TOTAL SHEETS	SHEET NO.
600	30-ITS-1	MADISON	17	15
STA.		TO STA.		
FED. ROAD DIST. NO.		ILLINOIS FED. AID PROJECT		



CABLE DIAGRAM LEGEND

- ELECTRIC CABLE IN CONDUIT
- S CABLE SPLICE (SEE GENERAL NOTES)
- 2/C INDICATES NUMBER OF CONDUCTORS IN CABLE
- LD IN ELECTRIC CABLE LEAD-IN, 1 PAIR
- CD CALL DELAY (SEE GENERAL NOTES)
- CCO CALL CARRY OVER (SEE GENERAL NOTES)
- SERVICE INSTALLATION
- *6 INDICATES AMERICAN WIRE GAUGE (AWG) SIZE 6 CONDUCTORS (SEE GENERAL NOTES)

PLOT DATE = #DATE#
 FILE NAME = #FILE#
 PLOT SCALE = #SCALE#
 REFERENCE = #REF#

REVISIONS	
NAME	DATE

ILLINOIS DEPARTMENT OF TRANSPORTATION
 IL 159 AND CAMELOT DRIVE
 CABLE DIAGRAM
 FAP 600
 SECTION 30-ITS-1
 MADISON COUNTY

SCALE: VERT. _____
 HORIZ. _____
 DATE _____ DRAWN BY _____
 CHECKED BY _____

FAP ROUTE	SECTION	COUNTY	TOTAL SHEETS	SHEET NO
600	30-1TS-1	MADISON	12	16
STA.		TO STA.		
CONTRACT NO. 12841				

Illinois Department of Transportation
Division of Highways
Illinois Department of Transportation

SOIL BORING LOG Page 1 of 1
Date 9/12/05

ROUTE FAP 600 DESCRIPTION Traffic Signals at IL 159 and Camelot in Collinsville LOGGED BY Amaro/Warlick

SECTION 30-1TS-1 LOCATION NE 1/4, SE 1/4, SEC. 22, TWP. 3N, RNG. 8W, 3 PM

COUNTY Madison DRILLING METHOD Hollow Stem Auger HAMMER TYPE 140# Automatic

STRUCT. NO. _____
Station _____

BORING NO. SB #1 NW Quad
Station 610+31
Offset 52.00ft RL
Ground Surface Elev. 553.76 ft

DEPTH (ft)	SOIL TYPE	UCS (psi)	SPT (blows)	WATER (%)	REMARKS
0	Surface Water Elev. _____ ft				
0	Stream Bed Elev. _____ ft				
0	Groundwater Elev.: _____ ft				
0	First Encounter _____ ft				
0	Upon Completion _____ ft				
0	After _____ Hrs. _____ ft				
3	Brown Silty Loam		1.4	20	
6			S/15		
1			0.4	23	
2			S6		
2			1.4	25	
3			S20		
4					
554.3					
1	Brown Silty Clay Loam		1.6	27	
4			S20		
552.8					
End of Boring					
-15					
-20					

The Unconfined Compressive Strength (UCS) Failure Mode is indicated by (B-Bulge, S-Shear, P-Penetrometer)
The SPT (N value) is the sum of the last two blow values in each sampling zone (AASHTO T208)
BBS, from 137 (Rev. 8-99)

Illinois Department of Transportation
Division of Highways
Illinois Department of Transportation

SOIL BORING LOG Page 1 of 1
Date 9/12/05

ROUTE FAP 600 DESCRIPTION Traffic Signals at IL 159 and Camelot in Collinsville LOGGED BY Schreuder/Warlick

SECTION 30-1TS-1 LOCATION NE 1/4, SE 1/4, SEC. 22, TWP. 3N, RNG. 8W, 3 PM

COUNTY Madison DRILLING METHOD Hollow Stem Auger HAMMER TYPE 140# Automatic

STRUCT. NO. _____
Station _____

BORING NO. SB #3 SE Quad
Station 609+83
Offset 52.50ft RL
Ground Surface Elev. 551.76 ft

DEPTH (ft)	SOIL TYPE	UCS (psi)	SPT (blows)	WATER (%)	REMARKS
0	Surface Water Elev. _____ ft				
0	Stream Bed Elev. _____ ft				
0	Groundwater Elev.: _____ ft				
0	First Encounter _____ ft				
0	Upon Completion _____ ft				
0	After _____ Hrs. _____ ft				
4	Brown Silty LOAM		4.0	16	
7			P		
9					
4			3.0	21	
3			P		
3					
2			0.8	42	
2			S20		
2					
550.8			1.2	27	
6			S20		
End of Boring					
-15					
-20					

The Unconfined Compressive Strength (UCS) Failure Mode is indicated by (B-Bulge, S-Shear, P-Penetrometer)
The SPT (N value) is the sum of the last two blow values in each sampling zone (AASHTO T208)
BBS, from 137 (Rev. 8-99)

Illinois Department of Transportation
Division of Highways
Illinois Department of Transportation

SOIL BORING LOG Page 1 of 1
Date 9/12/05

ROUTE FAP 600 DESCRIPTION Traffic Signals at IL 159 and Camelot in Collinsville LOGGED BY Amaro/Warlick

SECTION 30-1TS-1 LOCATION NE 1/4, SE 1/4, SEC. 22, TWP. 3N, RNG. 8W, 3 PM

COUNTY Madison DRILLING METHOD Hand Auger HAMMER TYPE _____

STRUCT. NO. _____
Station _____

BORING NO. SB #2 SW Quad
Station 609+53
Offset 51.00ft RL
Ground Surface Elev. 563.76 ft

DEPTH (ft)	SOIL TYPE	UCS (psi)	SPT (blows)	WATER (%)	REMARKS
0	Surface Water Elev. _____ ft				
0	Stream Bed Elev. _____ ft				
0	Groundwater Elev.: _____ ft				
0	First Encounter _____ ft				
0	Upon Completion _____ ft				
0	After _____ Hrs. _____ ft				
2.0	Brown Silty CLAY		15		
2.0			14		
2.0			14		
1.0			14		
1.0			20		
1.0			28		
1.0			27		
1.0			28		
1.0			30		
1.0			29		
554.8					
1.0	Gray Silty Clay LOAM		28		
1.0			27		
1.0			27		
550.8					
End of Boring					
-15					
-20					

The Unconfined Compressive Strength (UCS) Failure Mode is indicated by (B-Bulge, S-Shear, P-Penetrometer)
The SPT (N value) is the sum of the last two blow values in each sampling zone (AASHTO T208)
BBS, from 137 (Rev. 8-99)

Illinois Department of Transportation
Division of Highways
Illinois Department of Transportation

SOIL BORING LOG Page 1 of 1
Date 9/12/05

ROUTE FAP 600 DESCRIPTION Traffic Signals at IL 159 and Camelot in Collinsville LOGGED BY Amaro/Warlick

SECTION 30-1TS-1 LOCATION NE 1/4, SE 1/4, SEC. 22, TWP. 3N, RNG. 8W, 3 PM

COUNTY Madison DRILLING METHOD Hollow Stem Auger HAMMER TYPE 140# Automatic

STRUCT. NO. _____
Station _____

BORING NO. SB #4 NE Quad
Station 610+32
Offset 55.00ft RL
Ground Surface Elev. 551.76 ft

DEPTH (ft)	SOIL TYPE	UCS (psi)	SPT (blows)	WATER (%)	REMARKS
0	Surface Water Elev. _____ ft				
0	Stream Bed Elev. _____ ft				
0	Groundwater Elev.: _____ ft				
0	First Encounter _____ ft				
0	Upon Completion _____ ft				
0	After _____ Hrs. _____ ft				
6	Brown Silty LOAM		1.75	10	
7			P		
5			4.5	12	
6			P		
554.8					
3	Brown Silty Clay LOAM		3.5	18	
5			S/15		
2			1.3	24	
3			S20		
550.8					
End of Boring					
-15					
-20					

The Unconfined Compressive Strength (UCS) Failure Mode is indicated by (B-Bulge, S-Shear, P-Penetrometer)
The SPT (N value) is the sum of the last two blow values in each sampling zone (AASHTO T208)
BBS, from 137 (Rev. 8-99)

ILLINOIS DEPARTMENT OF TRANSPORTATION
SOIL BORING LOGS
FAP ROUTE 600
SECTION 30-1TS-1
MADISON COUNTY
PLOT DATE: *DATE-TIME*

DATE-TIME
JOB-SPEC
REF

PART OF THE NE 1/4 AND SE 1/4 OF SECTION 22,
T3N, R8W, OF THE 3RD PM, MADISON COUNTY, ILLINOIS

SECTION	COUNTY	TOWNSHIP	RANGE
30-115-1	MADISON	17	17
STA. 608+00 TO STA. 612+00		CONTRACT NO.:	

LEGEND

- EXISTING CENTERLINE
- EXISTING RIGHT OF WAY LINE
- EXISTING EASEMENT LINE
- PROPOSED CENTERLINE
- PROPOSED RIGHT OF WAY LINE
- PROPOSED TEMPORARY EASEMENT LINE
- PROPOSED PERMANENT EASEMENT LINE
- SECTION LINE
- QUARTER SECTION LINE
- QUARTER QUARTER SECTION LINE
- PROPERTY (DEED) LINE
- APPL APPARENT PROPERTY LINE
- MEASURED DIMENSION
- COMPUTED DIMENSION
- RECORDED DIMENSION
- FOUND IRON PIPE OR IRON ROD
- SET 3/8 INCH IRON ROD
- PERMANENT SURVEY MONUMENT, I.D.O.T. STD. 2135 (TO BE SET BY OTHERS)
- CUT CROSS FOUND OR SET
- SAME OWNERSHIP
- EXISTING BUILDING

■ STAKING OF PROPOSED RIGHT OF WAY. SET 3/8 INCH METAL ROD WITH DIVISION OF HIGHWAY SURVEY MARKER TO MONUMENT THE POSITION SHOWN, IDENTIFIED BY INSCRIPTION DATA AND SURVEYORS REGISTRATION NUMBER.

■ STAKING OF PROPOSED RIGHT OF WAY IN CULTIVATED AREAS. SET 3/8 INCH METAL ROD WITH DIVISION OF HIGHWAY SURVEY MARKER 20 INCHES BELOW GROUND SURFACE TO MONUMENT THE POSITION SHOWN, IDENTIFIED BY INSCRIPTION DATA AND SURVEYORS REGISTRATION NUMBER.

STATE OF ILLINOIS)
COUNTY OF MADISON) SS

I, EDDIE B. MURRAY AN ILLINOIS PROFESSIONAL LAND SURVEYOR, CERTIFY THAT I HAVE SURVEYED THE PLAT OF HIGHWAYS SHOWN HEREON AND THAT THIS PROFESSIONAL SERVICE CONFORMS TO THE CURRENT ILLINOIS MINIMUM STANDARDS FOR A BOUNDARY SURVEY FOR THE PROPOSED PARCEL(S) TO BE ACQUIRED BY THE STATE OF ILLINOIS, DEPARTMENT OF TRANSPORTATION, SHOWN HEREON.

DATED 11/04/05
Eddie B. Murray
EDDIE B. MURRAY, PLS NO. 035-003126
LICENSE EXPIRATION DATE: 11/30/2006



EDSI
ENGINEERING DESIGN SOURCE, INC.
1415 ELBRIDGE PAYNE DR. 8 EAGLE CENTER
SUITE 204 5617 N. W. 10TH AVE.
CHESBROUGH, MO 63011 OPALLEN, IL 62289
(636) 937-5588 (618) 538-0489

REGISTERED PROFESSIONAL SERVICE CORPORATION LICENSE NO. 184-002570

ILLINOIS DEPARTMENT OF TRANSPORTATION
PLAT OF HIGHWAYS
FAP ROUTE 600 (IL 159)
SECTION 30-115-1
MADISON COUNTY
JOB NO. R-98-008-05

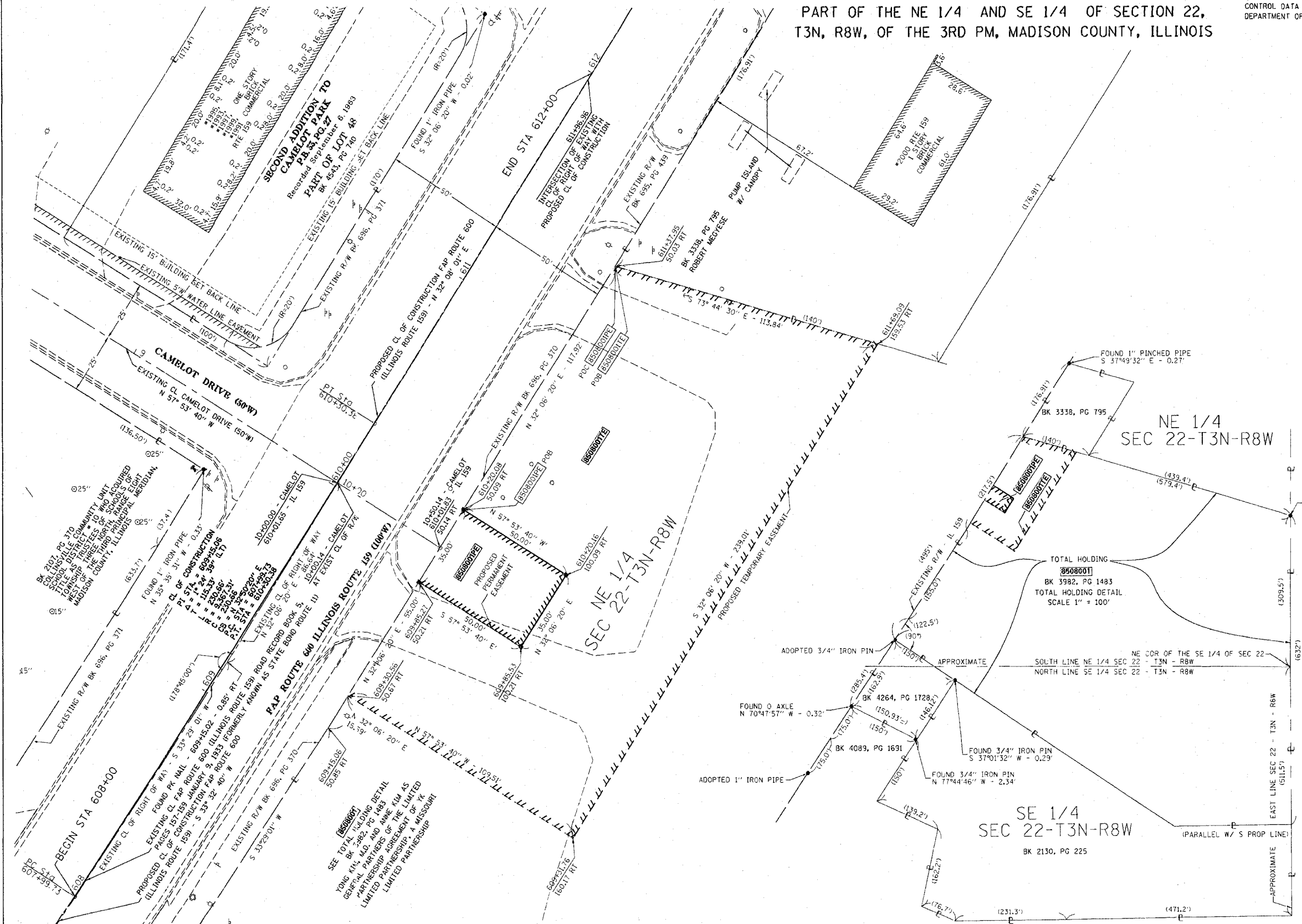
STATION 608+00 TO STATION 612+00

COMPLETION DATE OF FIELD WORK PERFORMED
LAND SURVEY: 8/23/2005
RIGHT OF WAY STAKING: 11/04/2005

ILLINOIS DEPARTMENT OF TRANSPORTATION
DIVISION OF HIGHWAYS/DISTRICT 8
1102 EASTPORT PLAZA DRIVE
COLLINGSVILLE, ILLINOIS 62234-6198

SHEET 2 OF 2
SHEET 1 IS A COVER SHEET

NO.	DATE	DESCRIPTION	BY
3	MM/DD/YYYY	CHANGE XXXXXX	XXX
2	MM/DD/YYYY	CHANGE XXXXXX	XXX
1	MM/DD/YYYY	CHANGE XXXXXX	XXX



COORDINATES SHOWN HEREON ARE BASED ON SURVEY CONTROL DATA AS PROVIDED BY THE ILLINOIS DEPARTMENT OF TRANSPORTATION.

COORDINATE TABLE			
STATION	OFFSET	NORTH	EAST
609+30.56	50.67 RT	738,862.1152	353,382.5418
609+31.76	160.17 RT	738,803.9106	353,475.3083
609+85.27	50.21 RT	738,908.7042	353,411.7731
609+85.53	100.21 RT	738,882.1302	353,454.1267
610+20.08	50.09 RT	738,938.3517	353,430.3749
610+20.16	100.09 RT	738,911.7777	353,472.7285
611+37.95	50.03 RT	739,039.2415	353,493.0489
611+69.09	159.53 RT	739,006.3696	353,602.3375

COORDINATE TABLE			
STATION	OFFSET	NORTH	EAST
607+99.73	CL PC	738,779.9722	353,268.3937
608+00	BEGIN STA	738,780.2002	353,268.5448
610+01.65	159/CAMELOT	738,949.4557	353,378.1500
10+00.14	CAMELOT/EX CL	738,949.3814	353,378.2684
610+30.38	CL PT	738,973.7655	353,393.4714
612+00	END STA	739,117.5980	353,483.6891

PARCEL NO.	OWNER	TOTAL HOLDING ACRES	EASEMENTS		PERMANENT TAX NUMBER	PROPERTY ACQUIRED BY
			PE = PERMANENT ACRES	TE = TEMPORARY SQ. FT.		
8508001	YONG KIM, M.D. AND ANNE KIM AS GENERAL PARTNERS OF THE LIMITED PARTNERSHIP AGREEMENT OF YK LIMITED PARTNERSHIP, A MISSOURI LIMITED PARTNERSHIP (TITLE REPORT NO. 18-2004MA-3407.0)	10.2189	PE = 0.0402 TE = 0.5216	PE = 1,750 TE = 22,723	13-1-21-22-12-203-002	