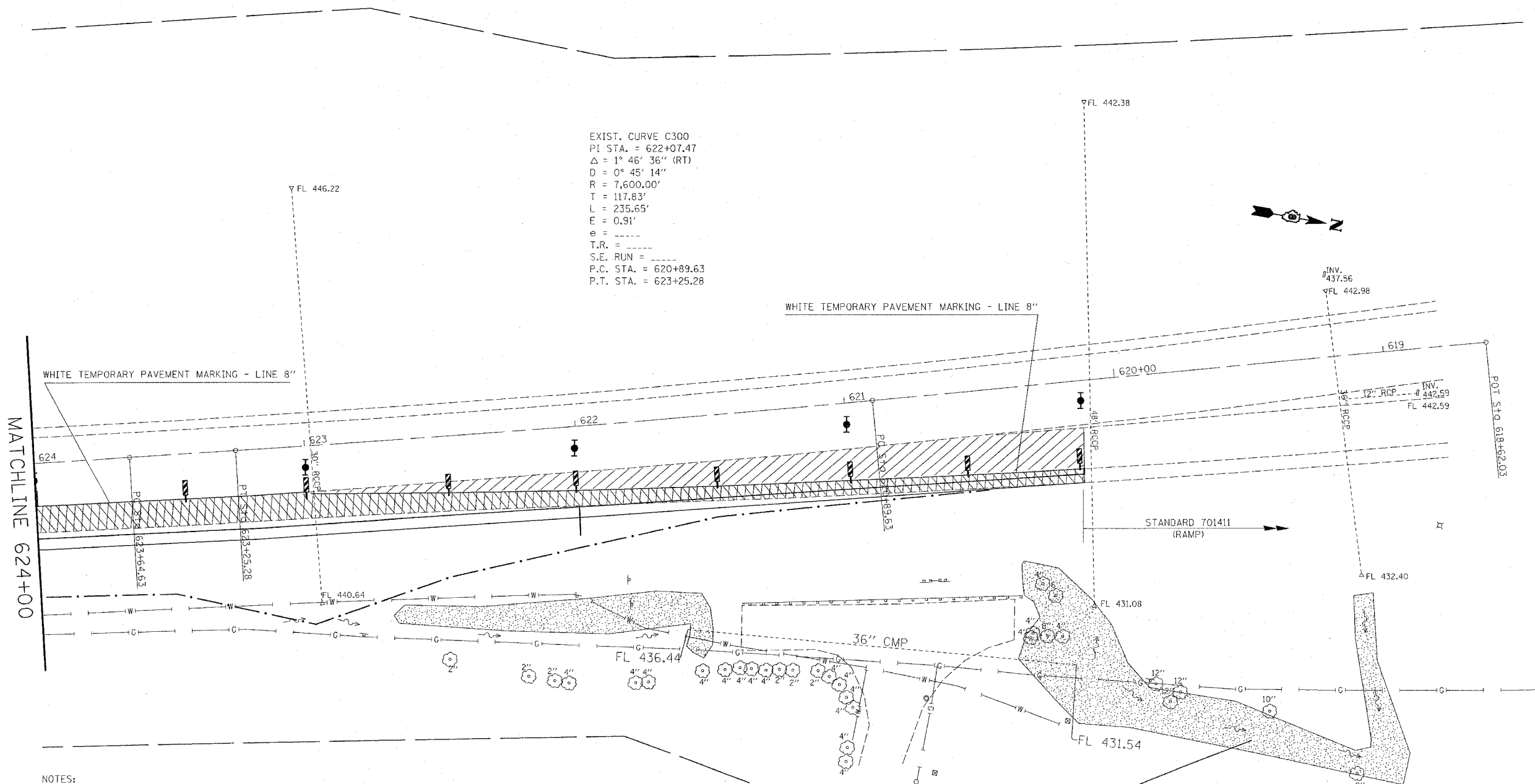


F.A.P. RTE.	SECTION	COUNTY	TOTAL SHEETS	SHEET NO.
312	66-31	MONROE	45	17
STA. 624+00		TO STA. 620+12		
FED. ROAD DIST. NO. ILLINOIS FED. AID PROJECT				

EXIST. CURVE C300
 PI STA. = 622+07.47
 $\Delta = 1^\circ 46' 36''$ (RT)
 $D = 0^\circ 45' 14''$
 $R = 7,600.00'$
 $T = 117.83'$
 $L = 235.65'$
 $E = 0.91'$
 $e = \text{---}$
 $T.R. = \text{---}$
 $S.E. RUN = \text{---}$
 P.C. STA. = 620+89.63
 P.T. STA. = 623+25.28



NOTES:
 ACCESS SHALL BE MAINTAINED AT ALL TIMES TO THE PALMER/QUARRY ROAD RAMP.

VERTICAL PANELS ARE TO BE INSTALLED ALONG THE EDGE OF PAVEMENT OF NORTHBOUND IL 3 DURING THE PERIOD WHEN THE TRENCH IS MORE THAN 12" DEEP; THEN EXTENDED LEG BARRICADES WITH STEADY BURNING LIGHTS SHALL BE USED IN THE DROPOFFS DURING PERIODS WHEN ALL LANES ARE OPEN TO TRAFFIC.

STANDARD 701501 SHALL BE USED ON NORTH MAIN STREET AND STANDARD 701422 SHALL BE USED ON NORTHBOUND IL 3. THE COST OF THE APPLICATION OF THESE STANDARDS AND ALL TRAFFIC CONTROL DEVICES AS HEREIN SPECIFIED AND ANY ADDITIONAL TRAFFIC CONTROL INCLUDING FLAGGERS AS DEEMED NECESSARY BY THE RESIDENT ENGINEER SHALL BE INCLUDED IN THE CONTRACT LUMP SUM PRICE FOR TRAFFIC CONTROL AND PROTECTION (SPECIAL).

- WORK AREAS
- BARRICADE WITH STEADY BURNING LIGHT
- VERTICAL PANELS AT 50' CENTERS

REVISIONS	
NAME	DATE

ILLINOIS DEPARTMENT OF TRANSPORTATION
TRAFFIC CONTROL PLAN
 FAP ROUTE 312
 SECTION 66-31
 MONROE COUNTY

SCALE: VERT. _____
 HORIZ. _____

DRAWN BY _____
 CHECKED BY _____

PLOT DATE = #DATE#
 FILE NAME = #FILE#
 PLOT SCALE = #SCALE#
 REFERENCE = #REF#