

F.A.P. RTE.	SECTION	COUNTY	TOTAL SHEETS	SHEET NO.
592	1211-1	ST. CLAIR	16	1

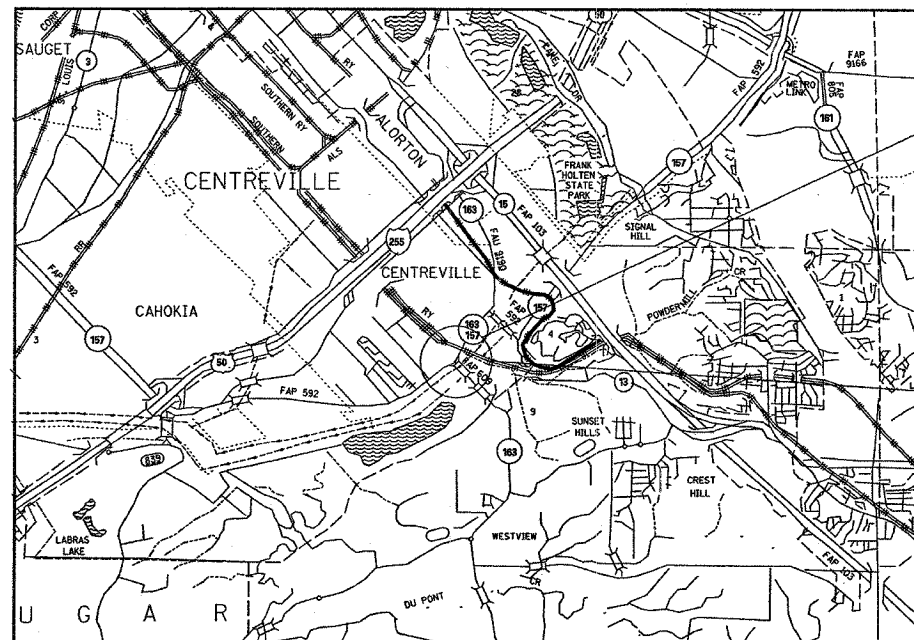
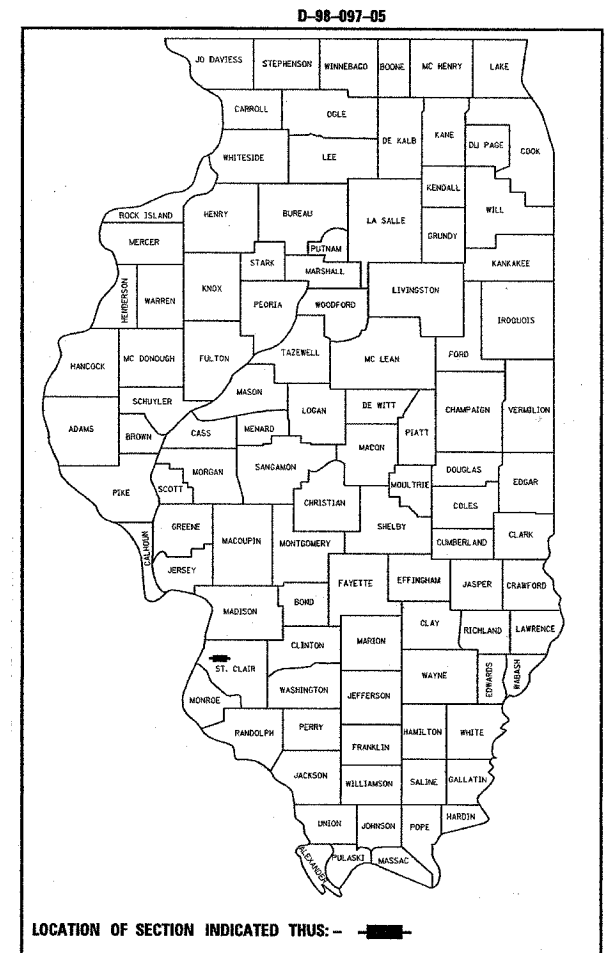
STATE OF ILLINOIS  
 DEPARTMENT OF TRANSPORTATION  
 DIVISION OF HIGHWAYS  
**PROPOSED  
 HIGHWAY PLANS**

FAP ROUTE 592 (ILL.ROUTE 157)  
 SECTION 1211-1  
 PROJECT: HS-0592(047)  
 ST. CLAIR COUNTY  
 RIGHT TURN LANE AT  
 IL 157 AND IL 163  
 C-98-124-05

FOR INDEX OF SHEETS, SEE SHEET NO. 2

TRAFFIC DATA

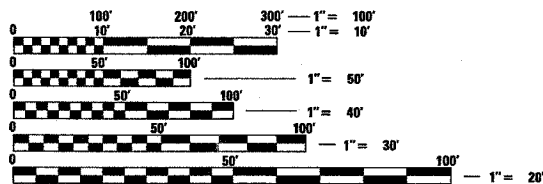
	2005 ADT	2025 ADT	MU	SU
IL 157	10600	12200	1.3	4
IL 163	3900	4500	3.7	1.6
IL 157/163	9000	10350	3.9	1.0



END STA 285+03.88  
 LAT:38.55737  
 LONG:-90.10938

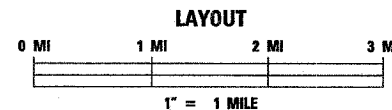
BEGIN STA 276+15.58  
 LAT:38.55527  
 LONG:-90.11146

MICROFILMED \_\_\_\_\_  
 REEL NUMBER \_\_\_\_\_  
 AWARDED \_\_\_\_\_  
 RESIDENT ENGINEER \_\_\_\_\_  
 AS BUILT CHANGES WERE MADE  
 ON THE FOLLOWING SHEETS



FULL SIZE PLANS HAVE BEEN PREPARED USING STANDARD ENGINEERING SCALES. REDUCED SIZED PLANS WILL NOT CONFORM TO STANDARD SCALES. IN MAKING MEASUREMENTS ON REDUCED PLANS, THE ABOVE SCALES MAY BE USED.

J.U.L.I.E.  
 JOINT UTILITY LOCATION INFORMATION FOR EXCAVATION  
 1-800-892-0123



GROSS LENGTH = 888.30 FT (0.168 MI)  
 NET LENGTH = 888.30 FT (0.168 MI)

STATE OF ILLINOIS  
 DEPARTMENT OF TRANSPORTATION  
 DIVISION OF HIGHWAYS

SUBMITTED Feb-10, 2006  
May Chami  
 DEPUTY DIRECTOR OF HIGHWAYS  
 REGION FIVE ENGINEER

March 24, 2006  
Mike Reno  
 ENGINEER OF DESIGN AND ENVIRONMENT

March 24, 2006  
Melton R. Sess P.E.  
 DIRECTOR, DIVISION OF HIGHWAYS

**PRINTED BY THE AUTHORITY  
 OF THE STATE OF ILLINOIS**

PROJECT ENGINEER: PATTI EBEAU (618) 346-3179  
 SQUAD LEADER: CHERYL KEPLAR (618) 346-3186

CONTRACT NO. 76956