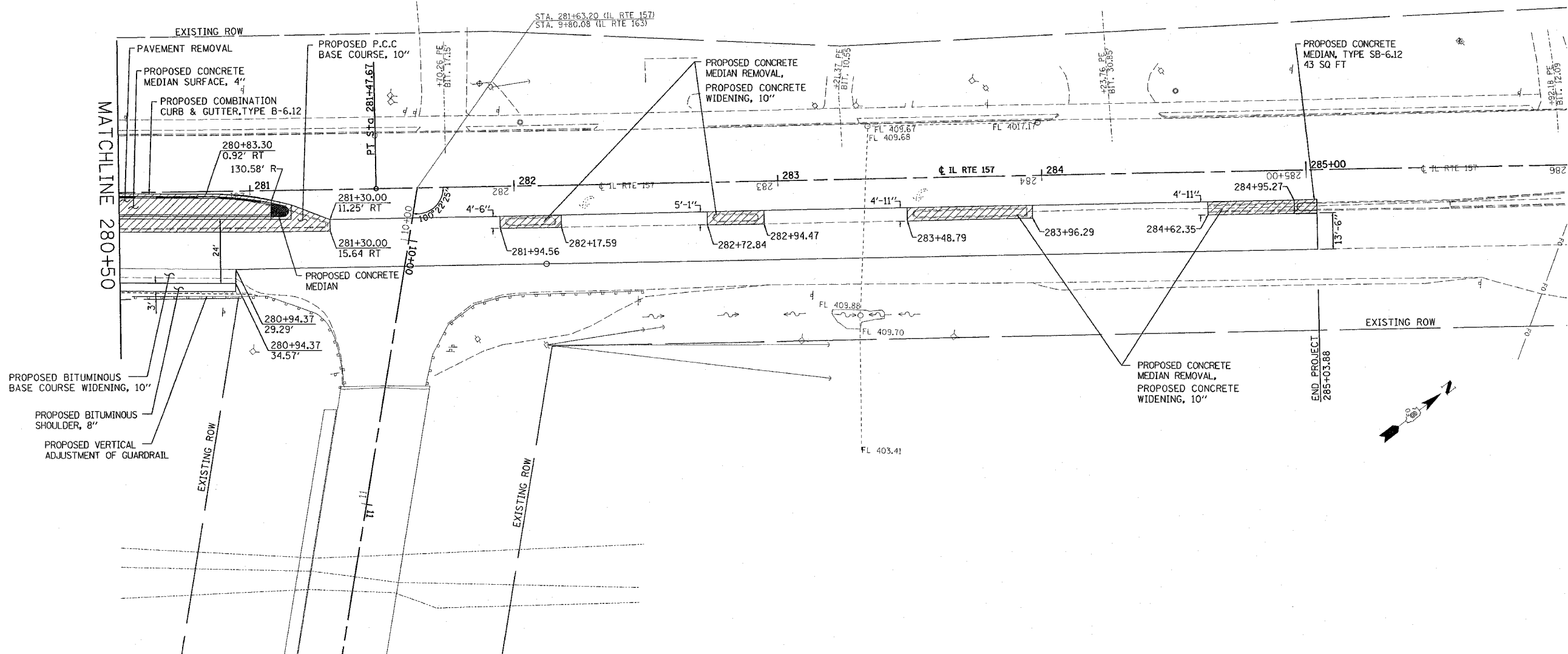
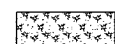
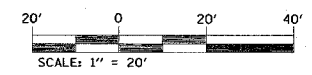


F.A.P. RTE.	SECTION	COUNTY	TOTAL SHEETS	SHEET NO.
592	1211-1	ST. CLAIR	16	8
STA. 280+50		TO STA. 285+03.88		
FED. ROAD DIST. NO.		ILLINOIS FED. AID PROJECT		



 - SEEDING AND MULCH AREAS



REVISIONS	
NAME	DATE

ILLINOIS DEPARTMENT OF TRANSPORTATION

**PLAN VIEW**

FAP ROUTE 592  
SECTION 1211-1  
ST. CLAIR COUNTY

SCALE: VERT. \_\_\_\_\_  
HORIZ. \_\_\_\_\_

DATE \_\_\_\_\_ DRAWN BY \_\_\_\_\_  
CHECKED BY \_\_\_\_\_

PLOT DATE = 2/9/2006  
 PLOT SCALE = 20,000/1  
 USER NAME = bengard