

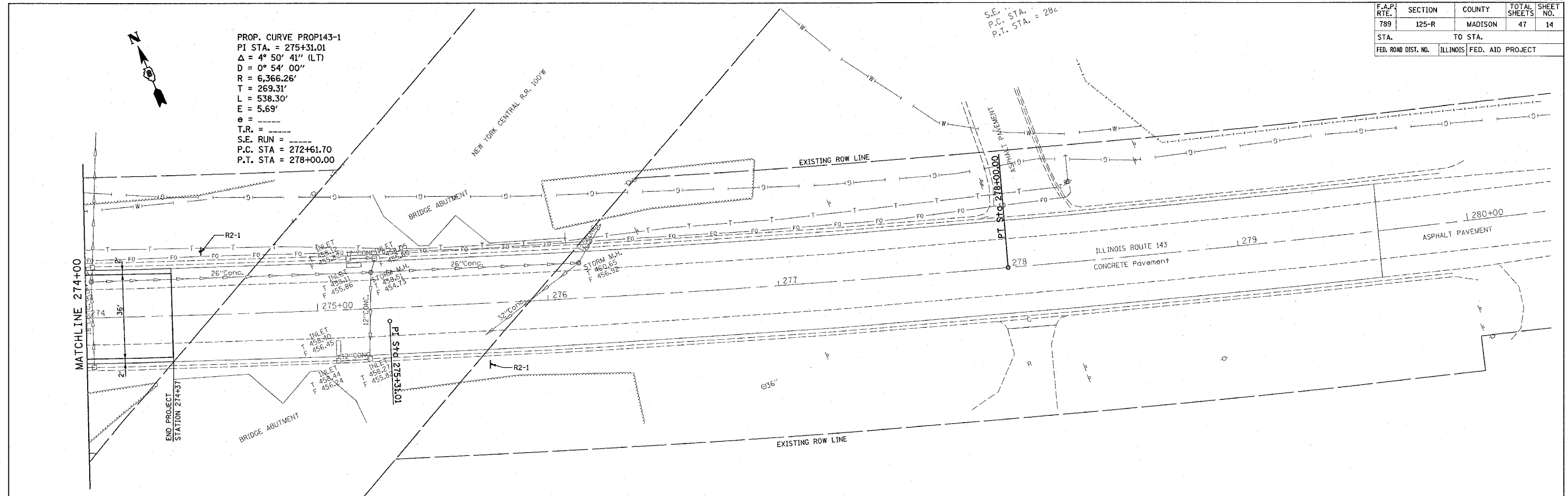
F.A.P. RTE.	SECTION	COUNTY	TOTAL SHEETS	SHEET NO.
789	125-R	MADISON	47	14
STA.		TO STA.		
FED. ROAD DIST. NO.	ILLINOIS	FED. AID PROJECT		

PROP. CURVE PROP143-1
 PI STA. = 275+31.01
 $\Delta = 4^\circ 50' 41''$ (LT)
 $D = 0^\circ 54' 00''$
 $R = 6,366.26'$
 $T = 269.31'$
 $L = 538.30'$
 $E = 5.69'$
 $e =$
 $T.R. =$
 $S.E. RUN =$
 $P.C. STA = 272+61.70$
 $P.T. STA = 278+00.00$

S.E. STA. = 284
 P.C. STA. = 284
 P.T. STA. = 284

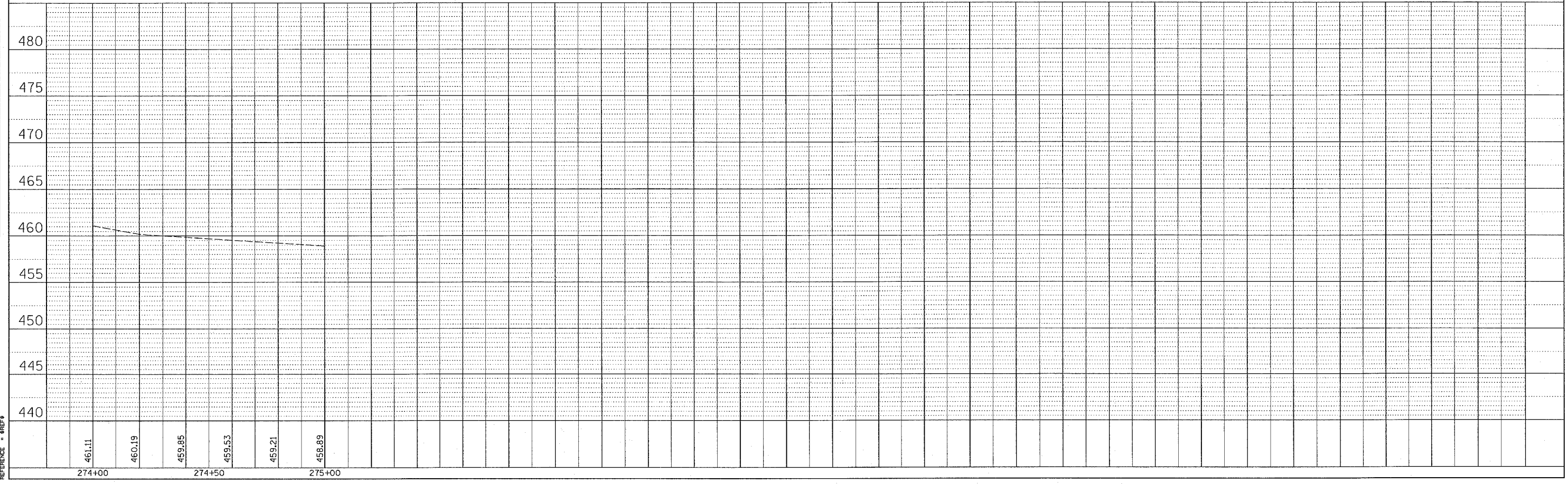
DATE	BY

PLAN
 SURVEYED
 NOTE BOOK
 ALIGNMENT CHECKED
 CAD FILE NAME



DATE	BY

PROFILE
 SURVEYED
 GRADES CHECKED
 STRUCTURE NOTATIONS CHECKED



PLOT DATE = 2/22/2006
 FILE NAME = c:\p\projects\76958\plan\p143-1.dwg
 PLOT SCALE = 1/8" = 1'-0"
 REFERENCE = 8924

274+00 274+50 275+00