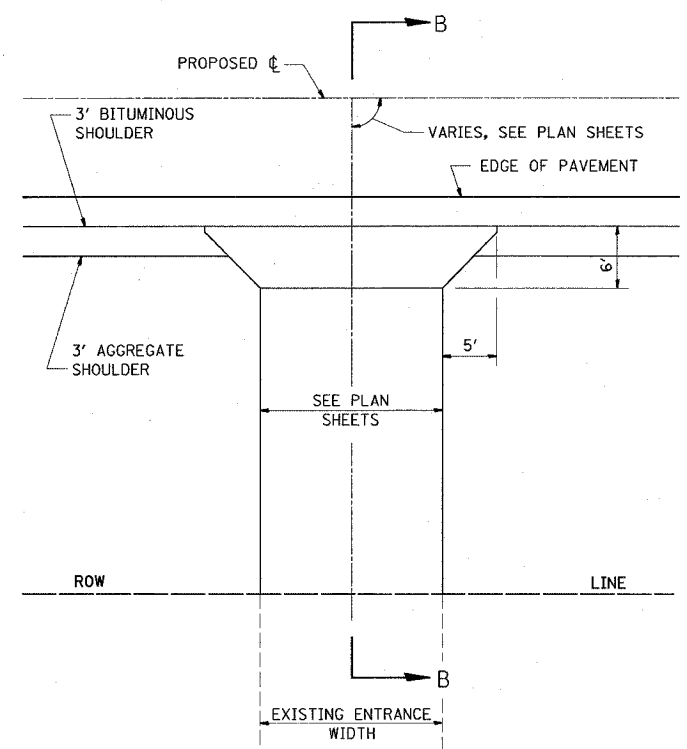
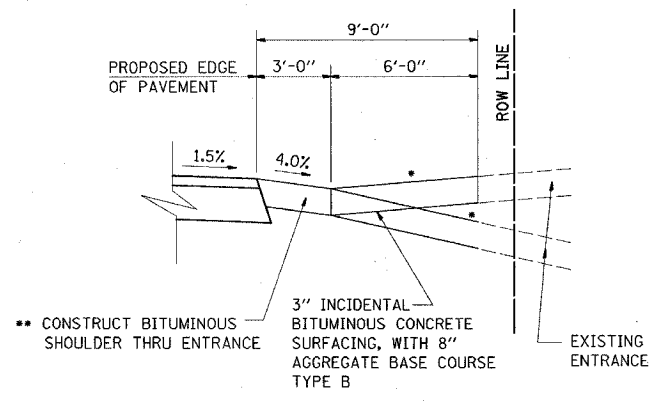


F.A.P. RTE.	SECTION	COUNTY	TOTAL SHEETS	SHEET NO.
789	125-R	MADISON	47	32
STA.		TO STA.		
FED. ROAD DIST. NO.	ILLINOIS	FED. AID PROJECT		



PE DETAIL B
PRIVATE ENTRANCE ADJACENT TO COMBINATION BITUMINOUS AND AGGREGATE SHOULDERS



SECTION B-B

- SEE CROSS SECTIONS FOR SLOPE
- OMIT AT CONCRETE ENTRANCES
- SEE PLANS FOR EXISTING SURFACE TYPE

AT ENTRANCES WITHOUT PROPOSED PIPE CULVERTS

REVISIONS	
NAME	DATE

ILLINOIS DEPARTMENT OF TRANSPORTATION

ENTRANCE DETAILS

FAP ROUTE 789
SECTION 125-R
MADISON COUNTY

PLOT DATE = 2/22/2006
 FILE NAME = c:\pro\pca\109985\plan\p109985a.dgn
 PLOT SCALE = 48,9999 / 1 IN.
 REFERENCE = #REF#