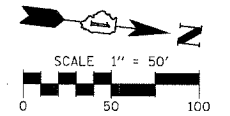


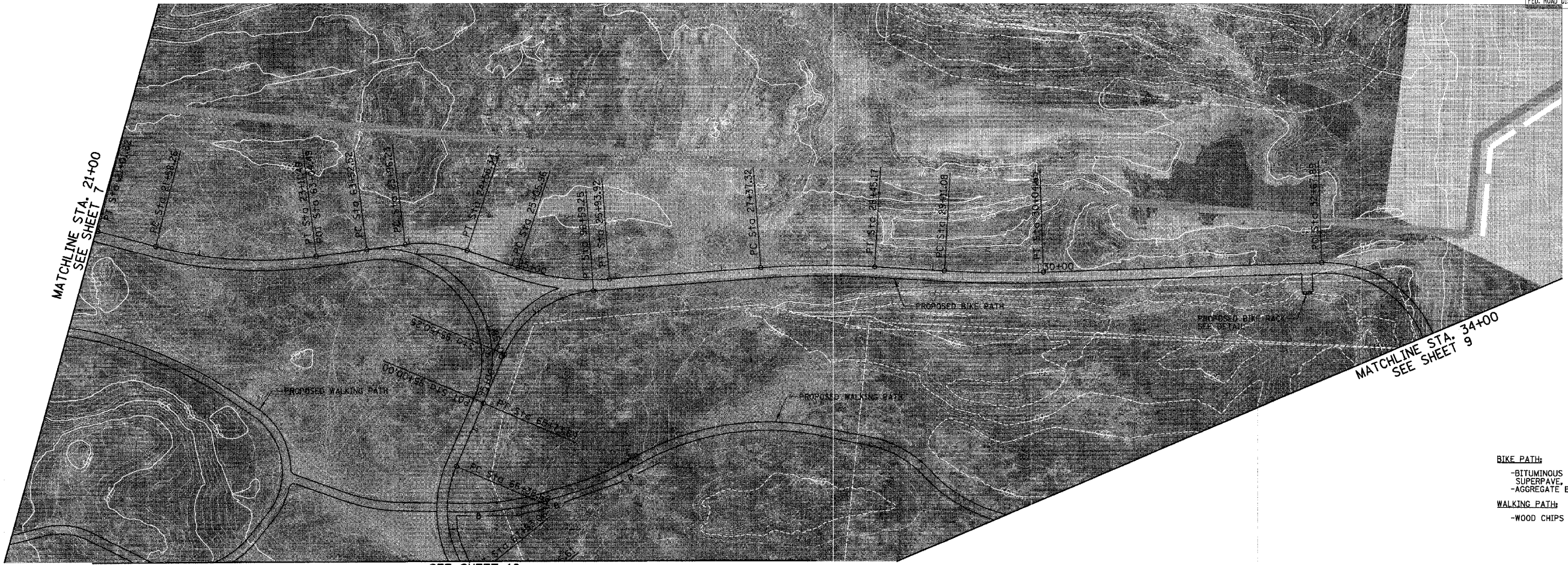
F.A.U. RTE.	SECTION	COUNTY	TOTAL SHEETS	SHEET NO.
00-P4003-00-BT	WILL		57	8
STA. 21+00	TO STA.	34+00		
FED. ROAD DIST. NO. 1 ILLINOIS FED. AID PROJECT				

CONTRACT NO. 83532



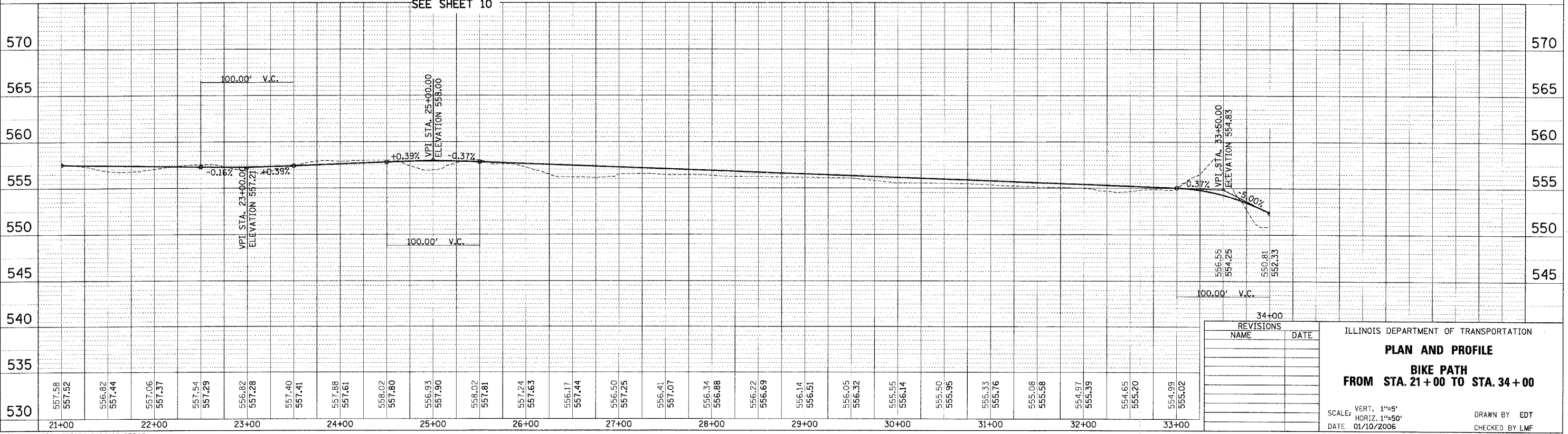
DATE	BY
SURVEYED	ALIGNED
NOTE BOOK	FILE NAME

DATE	BY
REVIEWED	DESIGNED
NOTE BOOK	STRUCTURE



**BIKE PATH:**  
 -BITUMINOUS CONCRETE SURFACE COURSE.  
 -SUPERPAVE, MIXTURE C, N50-2"  
 -AGGREGATE BASE COURSE TYPE B 8"

**WALKING PATH:**  
 -WOOD CHIPS 6"



REVISIONS	
NAME	DATE

ILLINOIS DEPARTMENT OF TRANSPORTATION

**PLAN AND PROFILE**

**BIKE PATH**

**FROM STA. 21+00 TO STA. 34+00**

SCALE: VERT. 1"=5'  
 HORIZ. 1"=50'

DATE 01/10/2006

DRAWN BY EDT  
 CHECKED BY LMF

01/10/2006

N:\bookport\01-25\DESIGN\0125-BP\02.pn