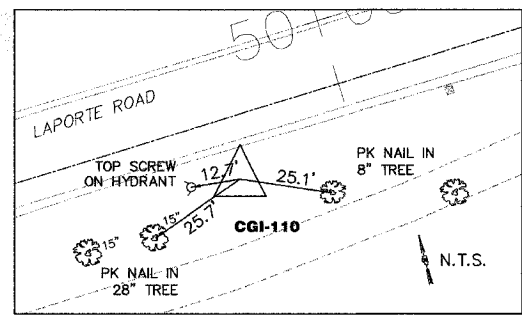
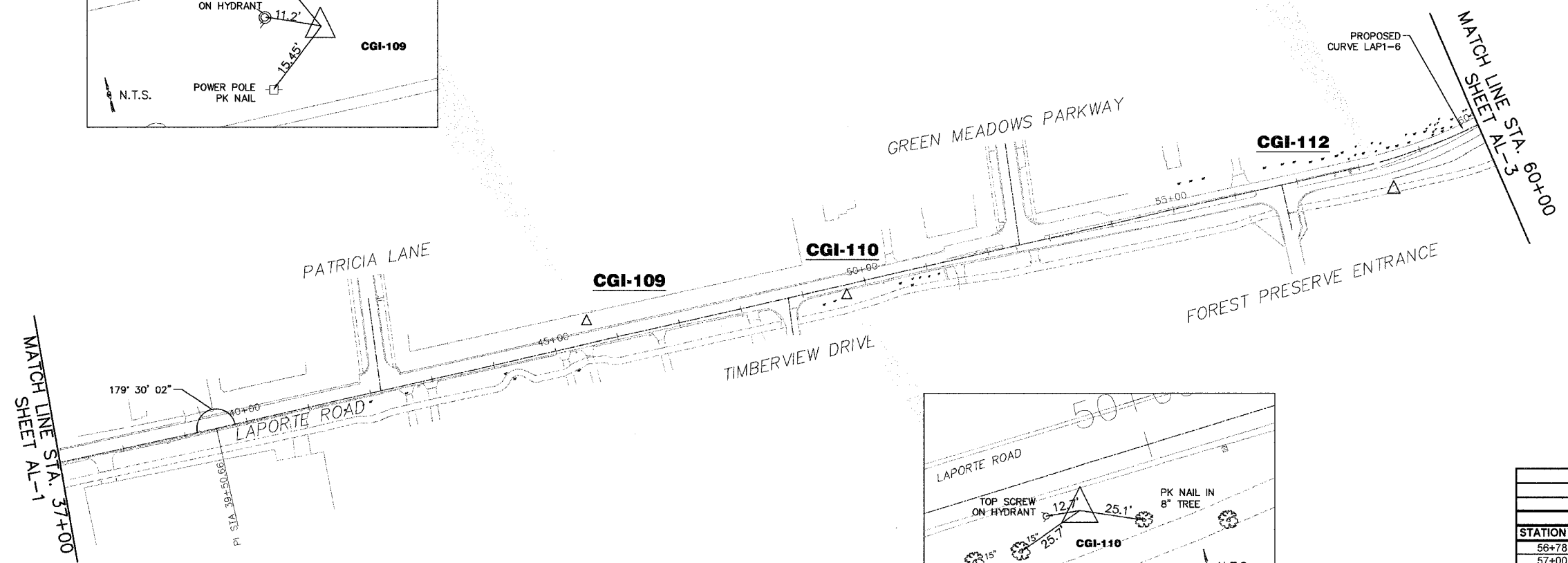


CURVE DATA

Prop. Curve LAP1-6
 PI Sta. 59+33.07
 Delta = 174°25' (LT)
 D = 06°21'58"
 T = 140.99'
 R = 900'
 L = 279.71'
 E = 10.98'
 PC Sta. 57+92.08
 PT Sta. 60+71.79
 SE = 3.6%



SUPERELEVATION TRANSITION					
CURVE LAP1-6					
STATION	CROSS SLOPE		ELEVATION		
	LT	RT	LT, EP	CL	RT, EP
56+78	-2.00%	-2.00%	734.63	735.01	734.63
57+00	-2.00%	-1.15%	734.79	735.17	734.95
57+20.3	-2.00%	-0.37%	734.86	735.24	735.17
57+50	-2.00%	0.78%	734.83	735.21	735.36
57+82	-2.02%	2.02%	734.22	734.60	734.98
58+00	-2.71%	2.71%	734.39	734.77	735.29
58+23	-3.60%	3.60%	733.036	733.72	734.40
60+41	-3.60%	3.60%	725.95	726.63	727.31
60+50	-3.25%	3.25%	722.78	723.16	723.78
60+82	-2.02%	2.02%	724.37	724.75	725.13
61+00	-2.00%	1.32%	724.17	724.55	724.80
61+50	-2.00%	-0.61%	722.78	723.16	723.04
61+86	-2.00%	-2.00%	721.62	722.00	721.62

CONTROL POINTS COORDINATES

STATION	DESCRIPTION	NORTHING	EASTING	ELEVATION
CP CGI-109	IRON PIPE IN PARKWAY	9776.42	13702.90	733.74
CP CGI-110	IRON PIPE	9747.69	14114.48	732.54
CP CGI-112	PK NAIL IN BIKEPATH	9766.98	14993.69	732.90

LAPORTE ROAD CENTERLINE

STATION	NORTHING	EASTING
39+50.66 (PI)	9708.32	13098.54
40+00.00	9711.03	13147.81
45+00.00	9738.46	13647.06
50+00.00	9765.89	14146.30
55+00.00	9793.33	14645.55
57+92.08 (PC)	9809.35	14937.19
59+33.07 (PI)	9817.09	15077.97
60+00.00	9844.54	15141.64

NOTE: A NEGATIVE CROSS SLOPE INDICATES THE EDGE OF PAVEMENT IS LOWER THAN THE CENTERLINE.

AL-2



VILLAGE OF MOKENA
LAPORTE ROAD REHABILITATION

ALIGNMENT & TIES
STATION 37+00 TO 60+00

DESIGN: MRJ
 DRAWN: JCC
 CHECKED: SNS
 DATE: DEC. 2005
 SCALE: 1"=100'
 FILE NO.: 3232

PLLOT DATE: Dec 21, 2005 - 11:37 am
 FILENAME: M:\PROJ\3232\Design\Misc\Sheet\3232-ALIGN&TIES.dwg