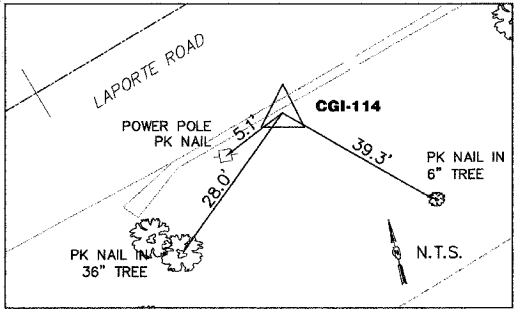
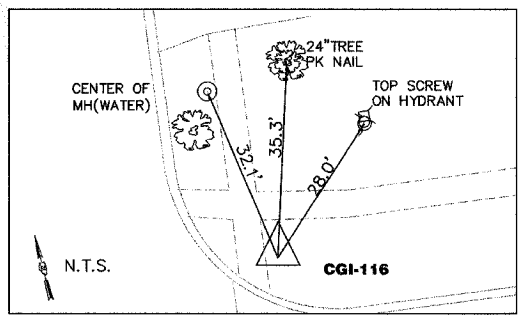
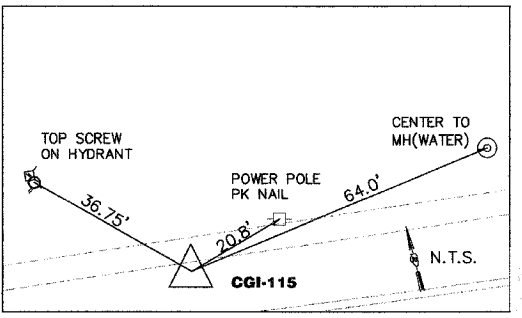
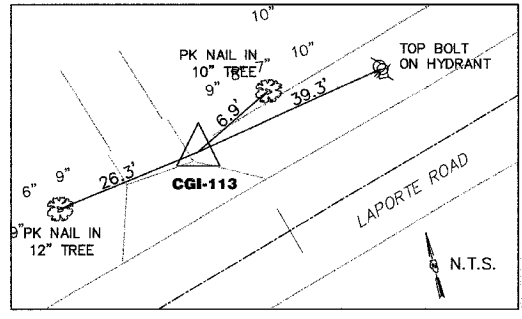


CURVE DATA

Prop. Curve LAP1-7
 PI Sta. 71+00.76
 Delta = 23°09'09" (RT)
 D = 07°23'35"
 T = 158.75'
 R = 775'
 L = 313.17'
 E = 18.09'
 PC Sta. 69+42.01
 PT Sta. 72+55.18
 SE = N.C.



MATCH LINE STA. 60+00
 SHEET AL-2

CONTROL POINTS COORDINATES

STATION	DESCRIPTION	NORTHING	EASTING	ELEVATION
CP CGI-113	IRON PIPE EAST OF DRIVEWAY	9967.36	15407.92	720.82
CP CGI-114	4" IRON PIPE BEHIND CURB	10115.03	15925.74	722.32
CP CGI-115	IRON PIPE IN PARKWAY	10262.83	16371.78	729.99
CP CGI-116	IRON PIPE IN PARKWAY	10251.62	16689.12	730.01

LAPORTE ROAD CENTERLINE

STATION	NORTHING	EASTING
60+71.79 (PT)	9867.51	15209.64
65+00.00	10020.63	15609.54
69+42.01 (PC)	10178.69	16022.32
70+00.00	10197.38	16077.20
71+00.76 (PI)	10235.45	16170.57
72+55.18 (PT)	10229.36	16329.20
75+00.00	10219.96	16573.85

AL-3



VILLAGE OF MOKENA
 LAPORTE ROAD REHABILITATION

ALIGNMENT & TIES
 STATION 60+00 TO PROJECT LIMITS

DESIGN: MRJ
 DRAWN: JCC
 CHECKED: SNS

DATE: DEC. 2005
 SCALE: 1"=100'
 FILE NO.: 3232

PL11 DATE: Dec 21, 2005 11:37am
 FILENAME: N:\PROJECTS\Design\Misc\Sheets\3232-AL\IGN&TIES.dwg