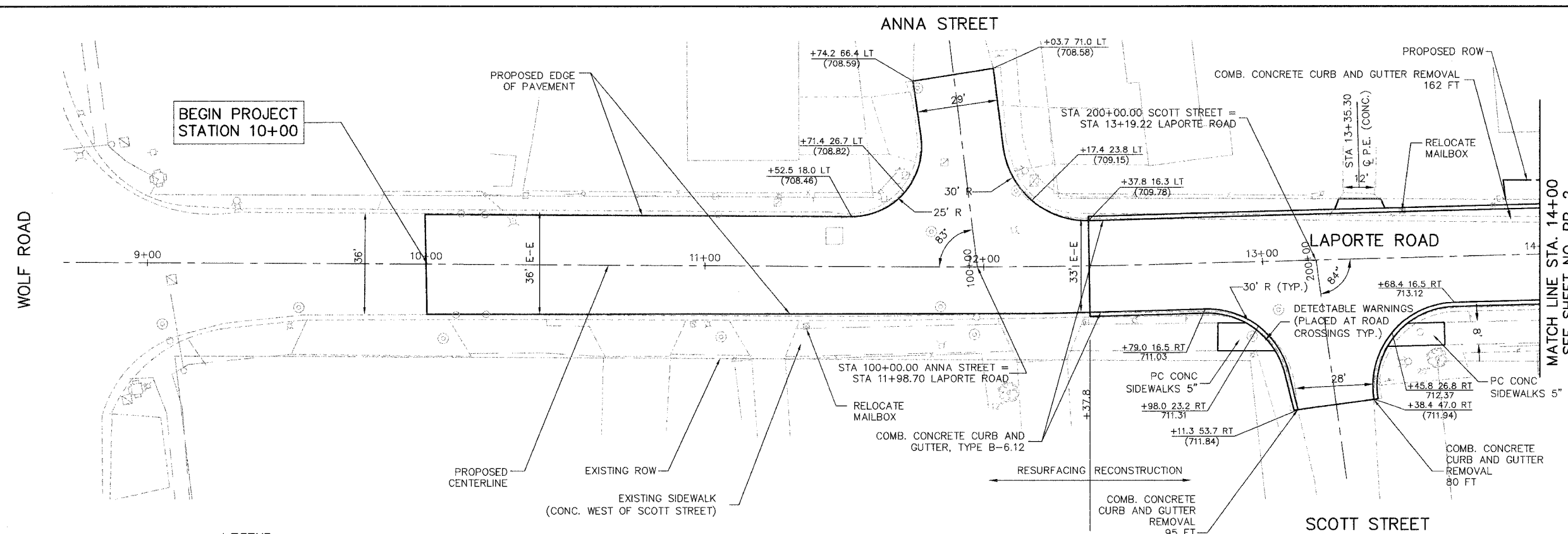
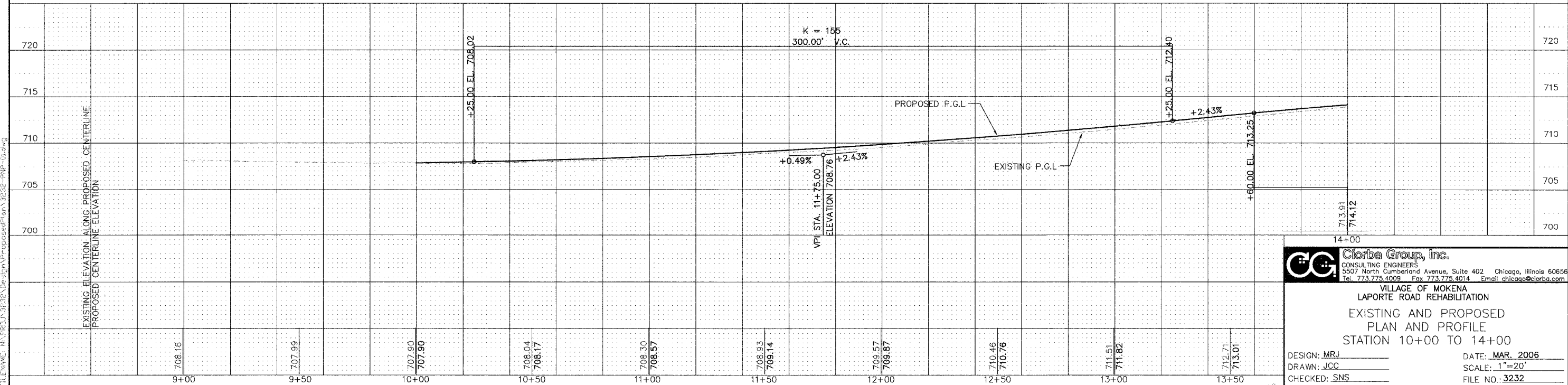
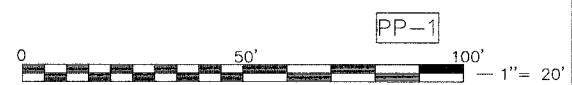


E.A.V. ROUTE	SECTION	COUNTY	TOTAL SHEETS	SHEET NO.
0306	*	WILL	118	12
PIWA REGION NO.	ILLINOIS PROJECT M--8003(200)		CONTRACT NO. 83825	
* 01-00029-00-FP				



- LEGEND**
- X TREE REMOVAL
 - PROPOSED DRIVEWAY PAVEMENT
 - REL RELOCATE

- NOTES:**
- * SEE CROSS-SECTIONS FOR SWALE AND SIDEWALK ELEVATIONS
 - * SEE PROPOSED EROSION CONTROL AND LANDSCAPING DETAILS FOR PROPOSED TREE LOCATION
 - * SEE DRAINAGE AND UTILITY PLAN FOR UTILITY REMOVAL AND RELOCATION INFORMATION.
 - * SEE LIGHTING REMOVAL PLAN SHEETS FOR REMOVAL OF LIGHTING ITEMS.



PP-1

0 50' 100' 1" = 20'

14+00

Clorba Group, Inc.
 CONSULTING ENGINEERS
 5507 North Cumberland Avenue, Suite 402 Chicago, Illinois 60656
 Tel. 773.775.4009 Fax 773.775.4014 Email chicago@clorba.com

VILLAGE OF MOKENA
 LAPORTE ROAD REHABILITATION
 EXISTING AND PROPOSED
 PLAN AND PROFILE
 STATION 10+00 TO 14+00

DESIGN: MRJ _____ DATE: MAR. 2006
 DRAWN: JCC _____ SCALE: 1"=20'
 CHECKED: SNS _____ FILE NO.: 3232

PLOT DATE: Mar 15, 2006 ... 3:42:20pm
 FILENAME: H:\PROJECTS\3232\Design\Proposed\PP-1-PP-12.dwg