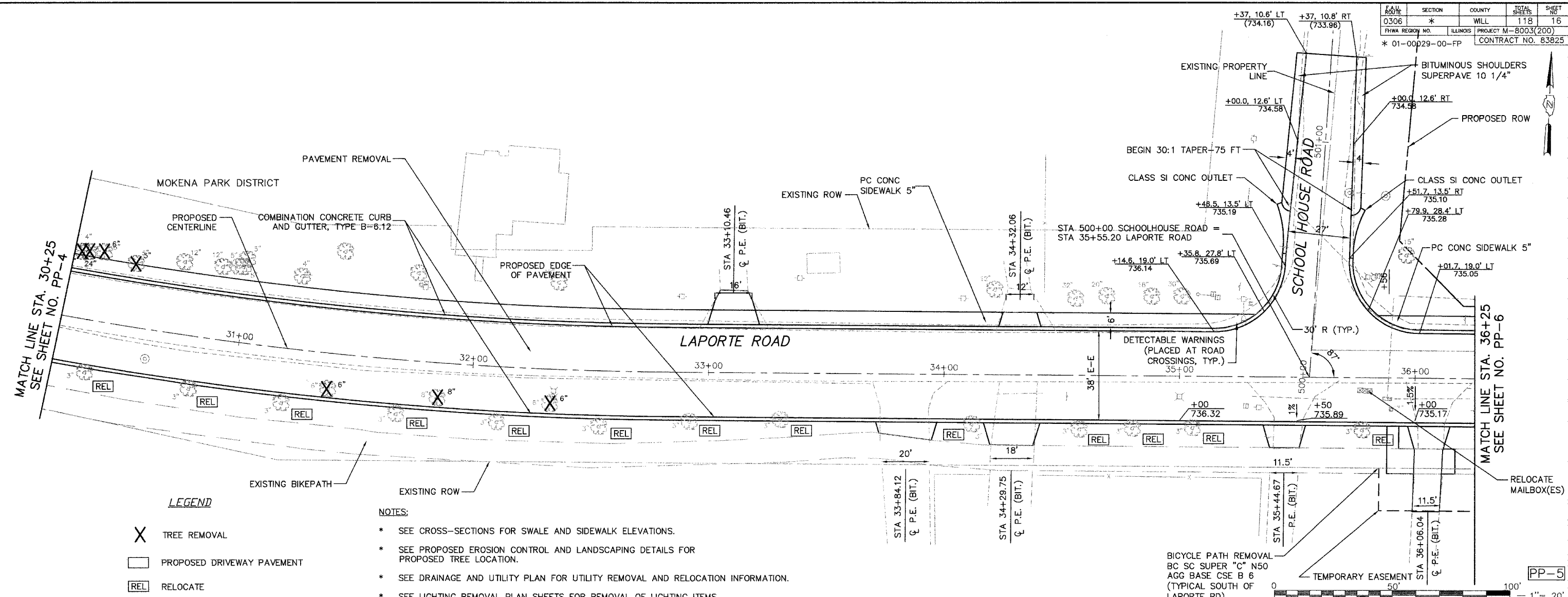
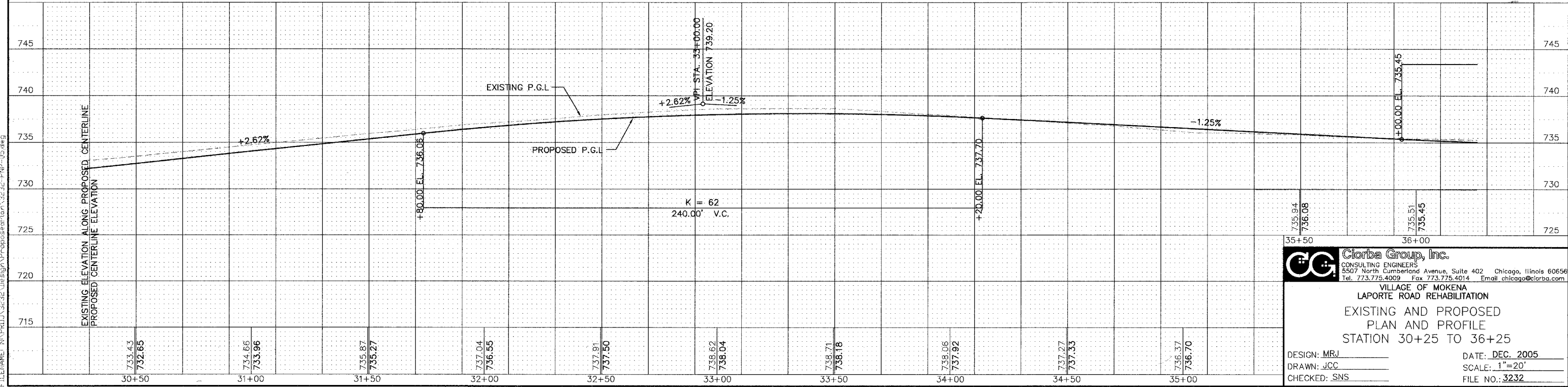


F.A.M. ROUTE	SECTION	COUNTY	TOTAL SHEETS	SHEET NO.
0306	*	WILL	118	16
FHWA REGION NO.	ILLINOIS	PROJECT M-8003(200)		
* 01-00029-00-FP	CONTRACT NO. 83825			



- LEGEND**
- X TREE REMOVAL
 - PROPOSED DRIVEWAY PAVEMENT
 - REL RELOCATE

- NOTES:**
- * SEE CROSS-SECTIONS FOR SWALE AND SIDEWALK ELEVATIONS.
 - * SEE PROPOSED EROSION CONTROL AND LANDSCAPING DETAILS FOR PROPOSED TREE LOCATION.
 - * SEE DRAINAGE AND UTILITY PLAN FOR UTILITY REMOVAL AND RELOCATION INFORMATION.
 - * SEE LIGHTING REMOVAL PLAN SHEETS FOR REMOVAL OF LIGHTING ITEMS.



CG Ciorba Group, Inc.
 CONSULTING ENGINEERS
 5507 North Cumberland Avenue, Suite 402 Chicago, Illinois 60656
 Tel. 773.775.4009 Fax 773.775.4014 Email chicago@ciorba.com

VILLAGE OF MOKENA
 LAPORTE ROAD REHABILITATION
 EXISTING AND PROPOSED
 PLAN AND PROFILE
 STATION 30+25 TO 36+25

DESIGN: MRJ DATE: DEC. 2005
 DRAWN: JCC SCALE: 1"=20'
 CHECKED: SNS FILE NO.: 3232

PLU1 JAL111 Dec 22, 2005 - 10:03am
 FILENAME: N:\PRJ\3232\Design\Proposed\Plan\3232-FWP-05.dwg