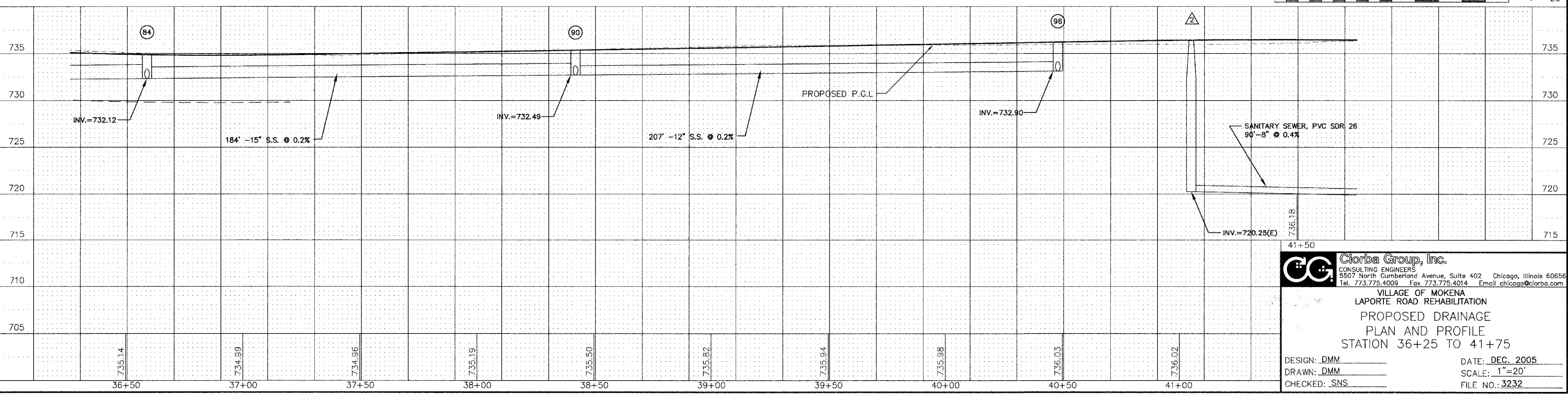
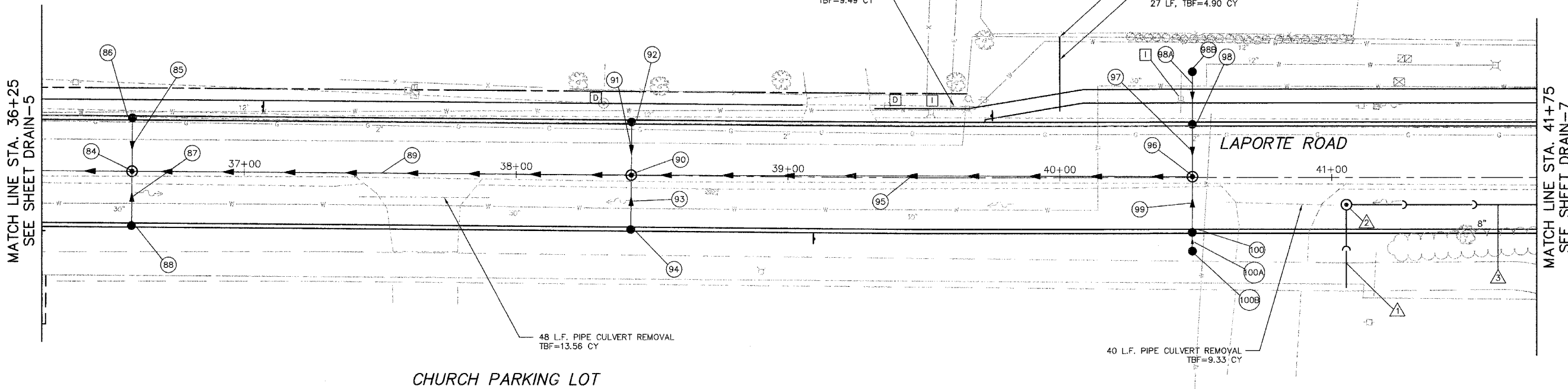


- (84) STA. 36+59, 0 FT RT. MANHOLE, T-A, 5' DIA., T-1F CL
T/F=734.95
INV.=732.12
- (85) STORM SEWER, RG, CLASS A, TYPE 1
19' -12" @ 0.5%
TBF=3.7 CY
- (86) STA. 36+59, 19 FT LT. CATCH BASIN, T-C, T-4 F&G
T/F=734.57
INV.=732.22
- (87) STORM SEWER, RG, CLASS A, TYPE 1
19' -12" @ 0.5%
TBF=3.7 CY
- (88) STA. 31+00, 19 FT RT. CATCH BASIN, T-C, T-4 F&G
T/F=734.57
INV.=732.22
- (89) STORM SEWER, RG, CLASS A, TYPE 1
18' -15" @ 0.2%
TBF=41.2 CY
- (90) STA. 38+42, 0 FT RT. MANHOLE T-A, 4' DIA., T-1F CL
T/F=735.44
INV.=732.49
- (91) STORM SEWER, RG, CLASS A, TYPE 1
19' -12" @ 0.5%
TBF=3.9 CY
- (92) STA. 38+42, 19 FT LT. CATCH BASIN, T-C, T-4 F&G
T/F=735.06
INV.=732.59
- (93) STORM SEWER, RG, CLASS A, TYPE 1
19' -12" @ 0.5%
TBF=3.9 CY
- (94) STA. 38+42 0 FT LT. CATCH BASIN, T-C, T-4 F&G
T/F=735.06
INV.=732.59
- (95) STORM SEWER, RG, CLASS A, TYPE 1
20' -12" @ 0.2%
TBF=52.4 CY
- (96) STA. 40+48, 19 FT LT. MANHOLE, T-A, 4' DIA., T-1F CL
T/F=736.27
INV.=732.90
- (97) STORM SEWER, RG, CLASS A, TYPE 1
19' -12" @ 0.5%
TBF=4.8 CY
- (98) STA. 40+48, 19 FT LT. CATCH BASIN, T-A, 4' DIA., T-4 F&G
T/F=735.89
INV.=733.00 (N)(S)
- (98A) STORM SEWER, RG, CLASS A, TYPE 1
20' -12" @ 1.0%
TBF=1.0 CY
- (98B) STA. 40+48, 39 FT LT. CATCH BASIN, T-C, T-8 F&G
T/F=734.9
INV.=733.2 (S)
- (99) STORM SEWER, RG, CLASS A, TYPE 1
19' -12" @ 0.5%
TBF=4.8 CY
- (100) STA. 40+48, 19 FT RT. CATCH BASIN, T-A, 4' DIA., T-4 F&G
T/F=735.89
INV.=733.00 (N)(S)

- (100A) STORM SEWER, RG, CLASS A, TYPE 1
8' -12" @ 1.0%
TBF=1.0 CY
- (100B) STA. 40+48, 27 FT RT. CATCH BASIN, T-C, T-8 F&G
T/F=734.9
INV.=733.08 (N)
- △ SANITARY SEWER SERVICE 6" 28' @ 1.0%, TBF=28.55 CY
- △ STA 41+05, 10 FT RT. SANITARY MANHOLE, TYPE A, 5'-DIAMETER, T-1F CL W/INTERIOR DROP
T/F=736.27
INV.=720.25 (E)
- △ DROP INV.=720.55 (S)
- △ SANITARY SEWER, PVC SDR 26 90'-8" @ 0.4%
TBF=205.41 CY

FILE NO.	SECTION	COUNTY	TOTAL SHEETS	SHEET NO.
0306	*	WILL	118	53
RHWA REGION NO.	ILLINOIS	PROJECT M-8003(200)	CONTRACT NO. 83825	

- A SANITARY MANHOLES TO BE ADJUSTED
- B VALVE VAULTS TO BE ADJUSTED
- C INLETS TO BE ADJUSTED
- D CATCH BASINS TO BE ADJUSTED
- E FIRE HYDRANTS TO BE RELOCATED
- F REMOVING CATCH BASINS
- G VALVE BOXES TO BE ADJUSTED
- H REMOVING MANHOLES
- I VALVE VAULTS, T-A, T1F, CL



41+50

CG **Ciorba Group, Inc.**
 CONSULTING ENGINEERS
 5807 North Cumberland Avenue, Suite 402 Chicago, Illinois 60656
 Tel. 773.775.4009 Fax 773.775.4014 Email chicago@ciorba.com

VILLAGE OF MOKENA
 LAPORTE ROAD REHABILITATION
 PROPOSED DRAINAGE
 PLAN AND PROFILE
 STATION 36+25 TO 41+75

DESIGN: DMM
 DRAWN: DMM
 CHECKED: SNS

DATE: DEC. 2005
 SCALE: 1"=20'
 FILE NO.: 3232

PLU: IRIE, Feb 10, 2006 - 10:51am
 FILENAME: NA.PRD.A3232.Drainage\Drainage\36252-UTILITY-06.dwg