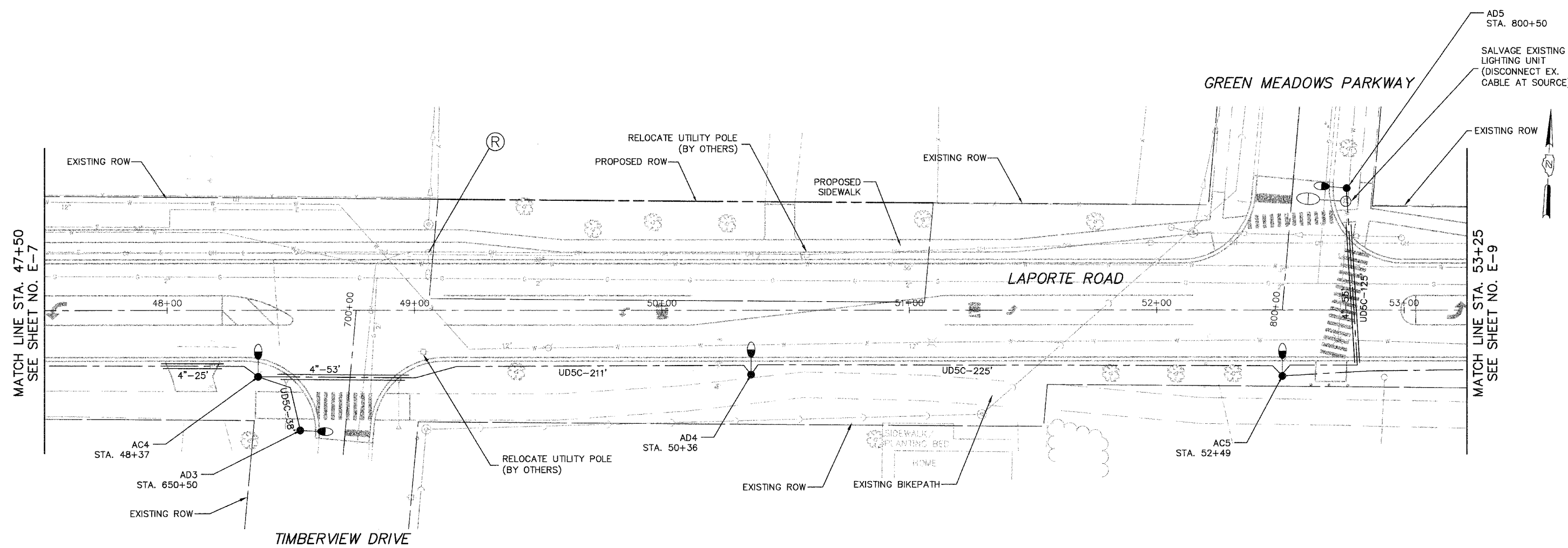


FAH ROUTE	SECTION	COUNTY	TOTAL SHEETS	SHEET NO.
0306	*	WILL	118	79
FHWA REGION NO.	ILLINOIS	PROJECT M-8003(200)		
* 01-00029-00-FP			CONTRACT NO. 83825	



- LEGEND**
- LIGHT POLE, 35' M.H., 10' MAST ARM, AND LUMINAIRE, 200W, UNLESS OTHERWISE NOTED
 - UTILITY POLE MOUNTED MAST ARM, LUMINAIRE TO BE REMOVED BY OTHERS
 - EXISTING LIGHT POLE, SIZE AS NOTED
 - UNIT DUCT WITH 4-1/C NO. 4 AND 1/C NO. 6 GROUND 600V (EPR-TYPE RHW) 1-1/2" POLYTHYLENE AND LENGTH AS NOTED
 - GALVANIZED STEEL CONDUIT, PUSHED, DIAMETER AND LENGTH AS NOTED
 - PROPOSED LIGHTING CONTROLLER, 120/240V, 100A
 - PROPOSED SERVICE CONNECTION
 - OFFSET FOUNDATION

- NOTES**
- ALL POLES SHALL BE OFFSET 8' FROM EDGE OF PAVEMENT TO CENTER OF POLE, UNLESS OTHERWISE NOTED.
 - EXISTING UTILITY POLE MOUNTED LUMINAIRES SHALL REMAIN IN USE DURING CONSTRUCTION.

E-8

CG Ciorba Group, Inc.
CONSULTING ENGINEERS
5507 North Cumberland Avenue, Suite 402 Chicago, Illinois 60656
Tel. 773.775.4008 Fax 773.775.4014 Email chicago@ciorba.com

VILLAGE OF MOKENA
LAPORTE ROAD REHABILITATION
LAPORTE ROAD IMPROVEMENTS
LIGHTING PLAN
STATION 47+25 TO 53+25

DESIGN: KDM _____ DATE: DEC. 2005 _____
DRAWN: KDM _____ SCALE: 1"=20' _____
CHECKED: JMV _____ FILE NO.: 3232 _____

FILED: JAL: Dec 22, 2005 - 5:45pm
FILENAME: N:\PROJECTS\2005\Design\Lighting\3232-LIGHT-08.dwg