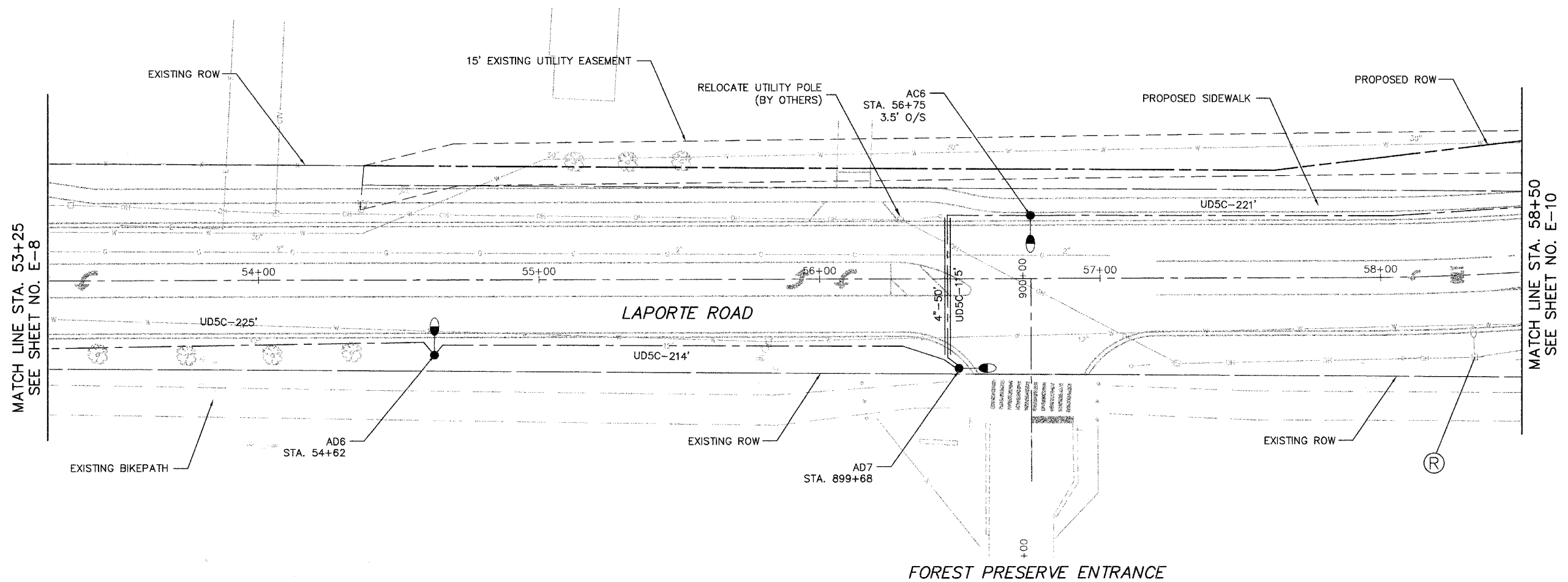


|                  |          |                     |                    |           |
|------------------|----------|---------------------|--------------------|-----------|
| F.A.M. ROUTE     | SECTION  | COUNTY              | TOTAL SHEETS       | SHEET NO. |
| 0306             | *        | WILL                | 118                | 80        |
| PHWA REGION NO.  | ILLINOIS | PROJECT M-8003(200) |                    |           |
| * 01-00029-00-FP |          |                     | CONTRACT NO. 83825 |           |



MATCH LINE STA. 53+25  
SEE SHEET NO. E-8

MATCH LINE STA. 58+50  
SEE SHEET NO. E-10

**LEGEND**

- LIGHT POLE, 35' M.H., 10' MAST ARM, AND LUMINAIRE, 200W, UNLESS OTHERWISE NOTED
- UTILITY POLE MOUNTED MAST ARM, LUMINAIRE TO BE REMOVED BY OTHERS
- EXISTING LIGHT POLE, SIZE AS NOTED
- UD5C-10' UNIT DUCT WITH 4-1/C NO. 4 AND 1/C NO. 6 GROUND 600V (EPR-TYPE RHW) 1-1/2" POLYTHYLENE AND LENGTH AS NOTED
- 4"-10' GALVANIZED STEEL CONDUIT, PUSHED, DIAMETER AND LENGTH AS NOTED
- PROPOSED LIGHTING CONTROLLER, 120/240V, 100A
- PROPOSED SERVICE CONNECTION
- F OFFSET FOUNDATION

**NOTES**

1. ALL POLES SHALL BE OFFSET 8' FROM EDGE OF PAVEMENT TO CENTER OF POLE, UNLESS OTHERWISE NOTED.
2. EXISTING UTILITY POLE MOUNTED LUMINAIRES SHALL REMAIN IN USE DURING CONSTRUCTION.

E-9

**Clorba Group, Inc.**  
 CONSULTING ENGINEERS  
 5507 North Cumberland Avenue, Suite 402 Chicago, Illinois 60666  
 Tel. 773.773.4009 Fax 773.773.4014 Email chicago@clorba.com

VILLAGE OF MOKENA  
 LAPORTE ROAD REHABILITATION  
 LAPORTE ROAD IMPROVEMENTS  
 LIGHTING PLAN  
 STATION 53+25 TO 58+50

DESIGN: KDM \_\_\_\_\_ DATE: DEC. 2005  
 DRAWN: KDM \_\_\_\_\_ SCALE: 1"=20'  
 CHECKED: JMV \_\_\_\_\_ FILE NO.: 3232

PLOT DATE: Dec 26, 2005 11:51 AM  
 FILENAME: N:\PROJECTS\2005\Design\Lighting\3232-LIGHT-119.dwg