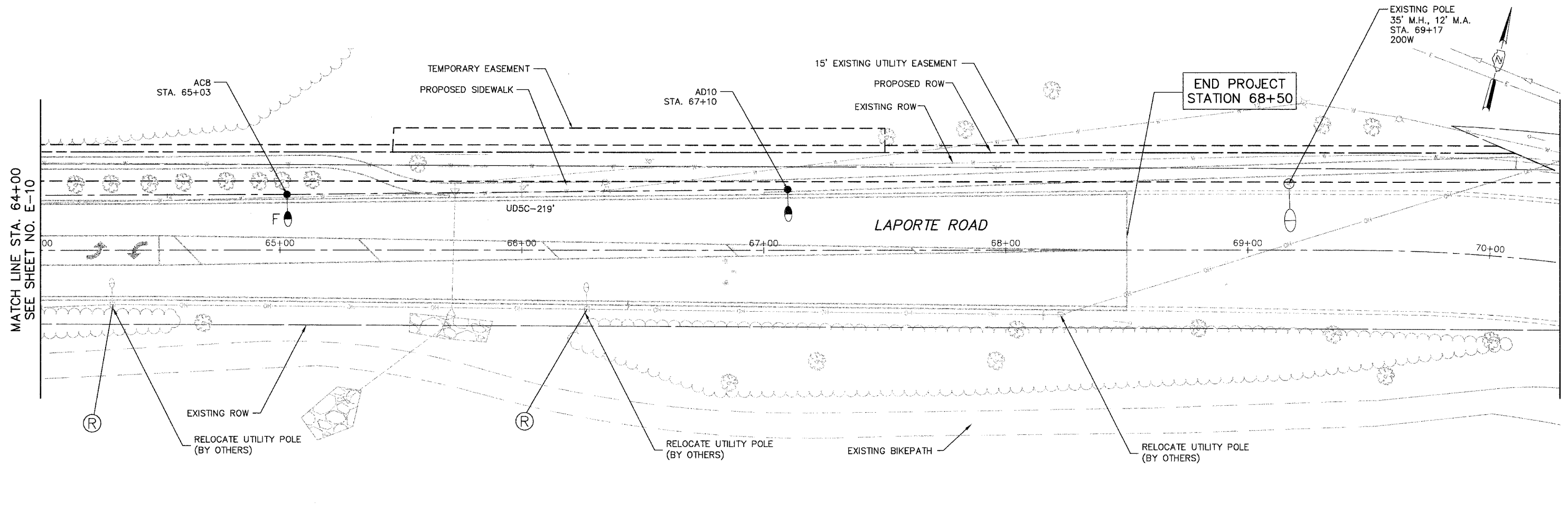


F.A. ROUTE	SECTION	COUNTY	TOTAL SHEETS	SHEET NO.
0306	*	WILL.	118	82
FHWA REGION NO.		ILLINOIS PROJECT M-8003(200)		
* 01-00029-00-FP		CONTRACT NO. 83825		

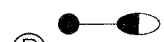

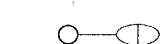
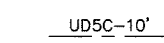
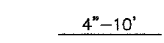

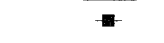



MATCH LINE STA. 64+00
SEE SHEET NO. E-10

END PROJECT
STATION 68+50

LAPORTE ROAD


LEGEND

-  LIGHT POLE, 35' M.H., 10' MAST ARM, AND LUMINAIRE, 200W, UNLESS OTHERWISE NOTED
-  UTILITY POLE MOUNTED MAST ARM, LUMINAIRE TO BE REMOVED BY OTHERS
-  EXISTING LIGHT POLE, SIZE AS NOTED
-  UD5C-10' UNIT DUCT WITH 4-1/C NO. 4 AND 1/C NO. 6 GROUND 600V (EPR-TYPE RHW) 1-1/2" POLYTHYLENE AND LENGTH AS NOTED
-  4'-10' GALVANIZED STEEL CONDUIT, PUSHED, DIAMETER AND LENGTH AS NOTED
-  PROPOSED LIGHTING CONTROLLER, 120/240V, 100A
-  PROPOSED SERVICE CONNECTION
-  F OFFSET FOUNDATION

NOTES

1. ALL POLES SHALL BE OFFSET 8' FROM EDGE OF PAVEMENT TO CENTER OF POLE, UNLESS OTHERWISE NOTED.
2. EXISTING UTILITY POLE MOUNTED LUMINAIRES SHALL REMAIN IN USE DURING CONSTRUCTION.

E-11



Ciorba Group, Inc.
CONSULTING ENGINEERS
5507 North Cumberland Avenue, Suite 402 Chicago, Illinois 60656
Tel. 773.775.4009 Fax 773.775.4014 Email chicago@ciorba.com

VILLAGE OF MOKENA
LAPORTE ROAD REHABILITATION
LAPORTE ROAD IMPROVEMENTS
LIGHTING PLAN
STATION 64+00 TO 70+29

DESIGN: KDM	DATE: DEC. 2005
DRAWN: KDM	SCALE: 1"=20'
CHECKED: JMV	FILE NO.: 3232

PLOT: D:\A\1: 050 267 2005 - 5010.pn
 FILENAME: N:\903\A2626\Design\Lighting\3232-11.dwg