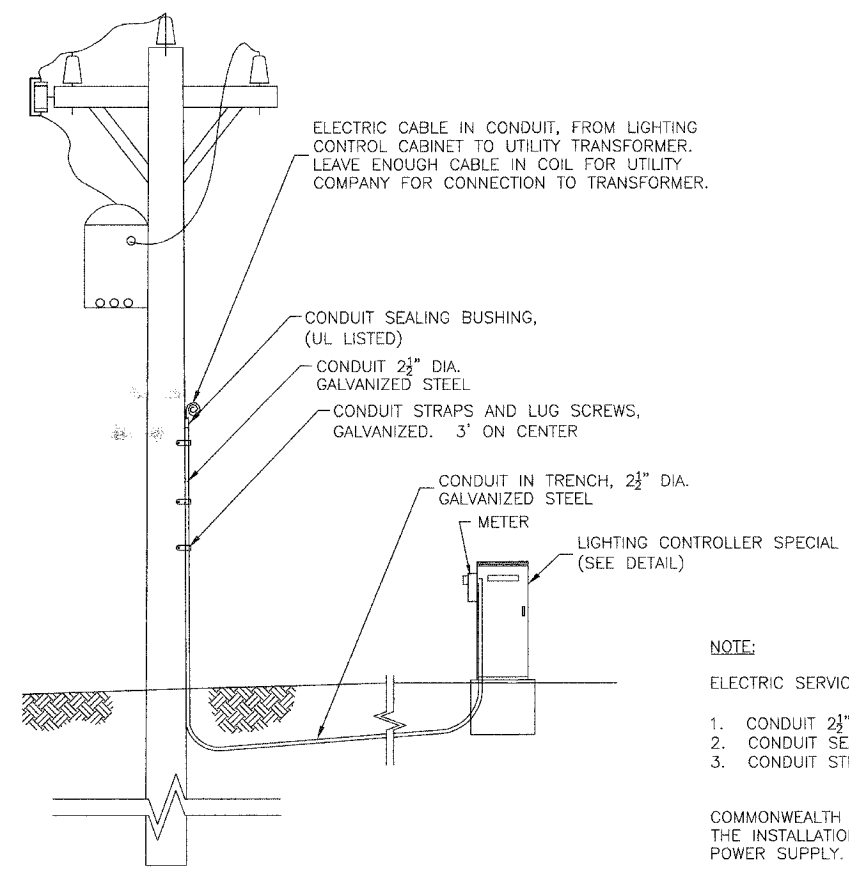


- NOTES:
- HEAT TREATMENT SHALL BE APPLIED AFTER WELDING.
 - DESIGN SHALL CONFORM WITH AASHTO STANDARD SPECIFICATIONS FOR STRUCTURAL SUPPORTS FOR HIGHWAY SIGNS, LUMINAIRES AND TRAFFIC SIGNALS FOR 80 MPH WIND LOADINGS WITH A 1.3 GUST LOAD FACTOR.
 - POLES AND ARMS SHALL BE BUILT TO TOLERANCES THAT WILL ALLOW CONSISTENT INTERCHANGIBILITY TO FACILITATE REPLACEMENT OF ARMS AND POLES.

MAST ARM STYLE LIGHTING UNIT
 35' MOUNTING HEIGHT WITH 10' MAST ARM
 NOT TO SCALE



ELECTRIC SERVICE INSTALLATION
 NOT TO SCALE

- NOTE:
- ELECTRIC SERVICE INSTALLATION INCLUDES:
- CONDUIT 2 1/2" DIA. GALVANIZED STEEL
 - CONDUIT SEALING BUSHING, (UL LISTED)
 - CONDUIT STRAPS AND LUG SCREWS, GALVANIZED
- COMMONWEALTH EDISON SHALL BE CONTACTED BEFORE THE INSTALLATION WORK BEGINS FOR THE ELECTRIC POWER SUPPLY.

Ciorba Group, Inc.
 CONSULTING ENGINEERS
 5507 North Cumberland Avenue, Suite 402 Chicago, Illinois 60656
 Tel. 773.775.4009 Fax 773.775.4014 Email chicago@ciorba.com

VILLAGE OF MOKENA
 LAPORTE ROAD REHABILITATION

LIGHTING DETAILS

DESIGN: KDM
 DRAWN: KDM
 CHECKED: JMV

DATE: DEC. 2005
 SCALE: NOT TO SCALE
 FILE NO.: 3232