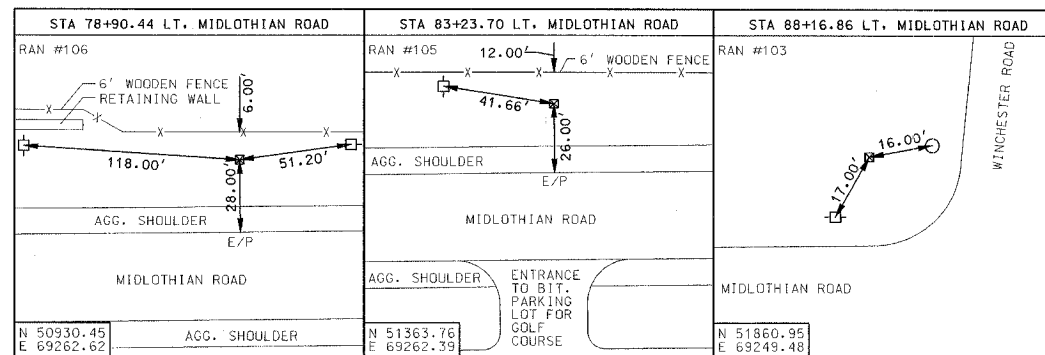
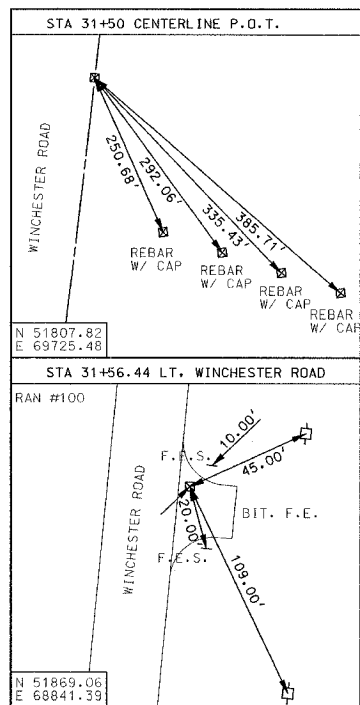


F.A.U. RTE.	SECTION	COUNTY	TOTAL SHEETS	SHEET NO.
2605 1233	02-00170-09-CH	LAKE	66	12
ALIGNMENT, TIES AND BENCHMARKS				
FED. ROAD DIST. NO. 5 ILLINOIS PROJECT CMM-8003(207)				
CONTRACT NO. 83837				

LEGEND

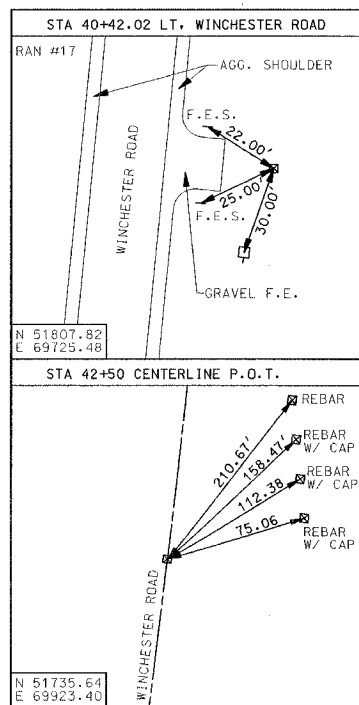
- LIGHT BASE
- POWER POLE
- FIRE HYDRANT
- DECIDUOUS TREE
- TELEPHONE BOX
- CATCH BASIN
- PK NAIL

SCALE: 1"=100'



STATION EQUATION
 STA. 87+58.65 MIDLOTHIAN ROAD =
 STA. 36+19.74 WINCHESTER ROAD
 N 51799.09
 E 69296.358

- BENCHMARKS:**
- CUT "X" IN SOUTH BOLT ON 1ST HYDRANT WEST OF MIDLOTHIAN SOUTH SIDE OF WINCHESTER. ELEVATION 809.85
 - SOUTHWEST BOLT ON HYDRANT @ SOUTHWEST CORNER OF WINCHESTER AND ADDERLEY LANE. ELEVATION 828.17
 - SOUTHEAST BOLT ON HYDRANT @ SOUTHEAST CORNER OF MIDLOTHIAN AND WINCHESTER. ELEVATION 806.73
 - NAIL IN SOUTH FACE OF POWER POLE @ NORTHEAST CORNER OF MIDLOTHIAN AND WINCHESTER. ELEVATION 803.17
 - RAILROAD SPIKE IN SOUTH FACE OF POWER POLE AT NORTHWEST CORNER OF WINCHESTER AND HARRIS. ELEVATION 783.82
 - RAILROAD SPIKE IN SOUTH FACE OF POWER POLE AT NORTHWEST CORNER OF WINCHESTER AND HARRIS. ELEVATION 783.82
 - NAIL IN SOUTH FACE OF POWER POLE @ NORTHEAST CORNER OF MIDLOTHIAN AND WINCHESTER. ELEVATION 803.17
 - FOLT BY ARROW ON HYDRANT @ SOUTHEAST CORNER OF MIDLOTHIAN AND COMMERCE. ELEVATION 809.17
 - NAIL IN SOUTH FACE OF POWER POLE AT NORTHEAST CORNER MIDLOTHIAN AND WINCHESTER. ELEVATION 803.17
 - SOUTHEAST BOLT ON HYDRANT AT ENTRANCE TO GOLF COURSE +/- 300' SOUTH OF WINCHESTER ROAD (EAST SIDE MIDLOTHIAN RD) ELEVATION 813.29
 - SOUTHEAST BOLT ON HYDRANT AT SOUTHEAST CORNER OF MIDLOTHIAN AND WINCHESTER. ELEVATION 806.73



CURVE 1
 $\Delta = 4^\circ 23' 37.02''$ (RT)
 $D = 0^\circ 18' 02.9984''$
 $T = 730.60'$
 $L = 1,460.48'$
 $R = 19,045.74'$
 P.C. Sta 39+24.59
 P.T. Sta 53+85.07

