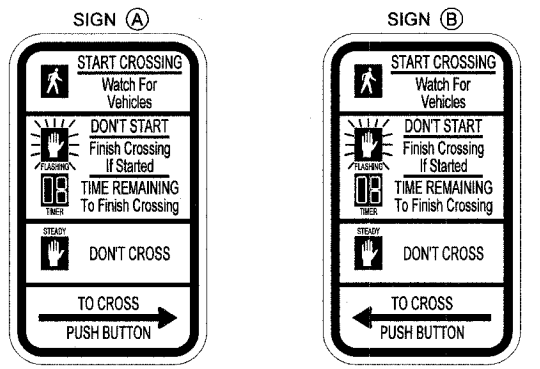


F.A.U. R.T.E. 2605 1233	SECTION 02-00170-09-CH	COUNTY LAKE	TOTAL SHEETS 66	SHEET NO. 27
TRAFFIC SIGNAL PLAN			PROJECT CMM-8003(207)	
FED. ROAD DIST. NO. 5 ILLINOIS			CONTRACT NO. 83837	

TRAFFIC SIGNAL FOUNDATIONS & STRUCTURES

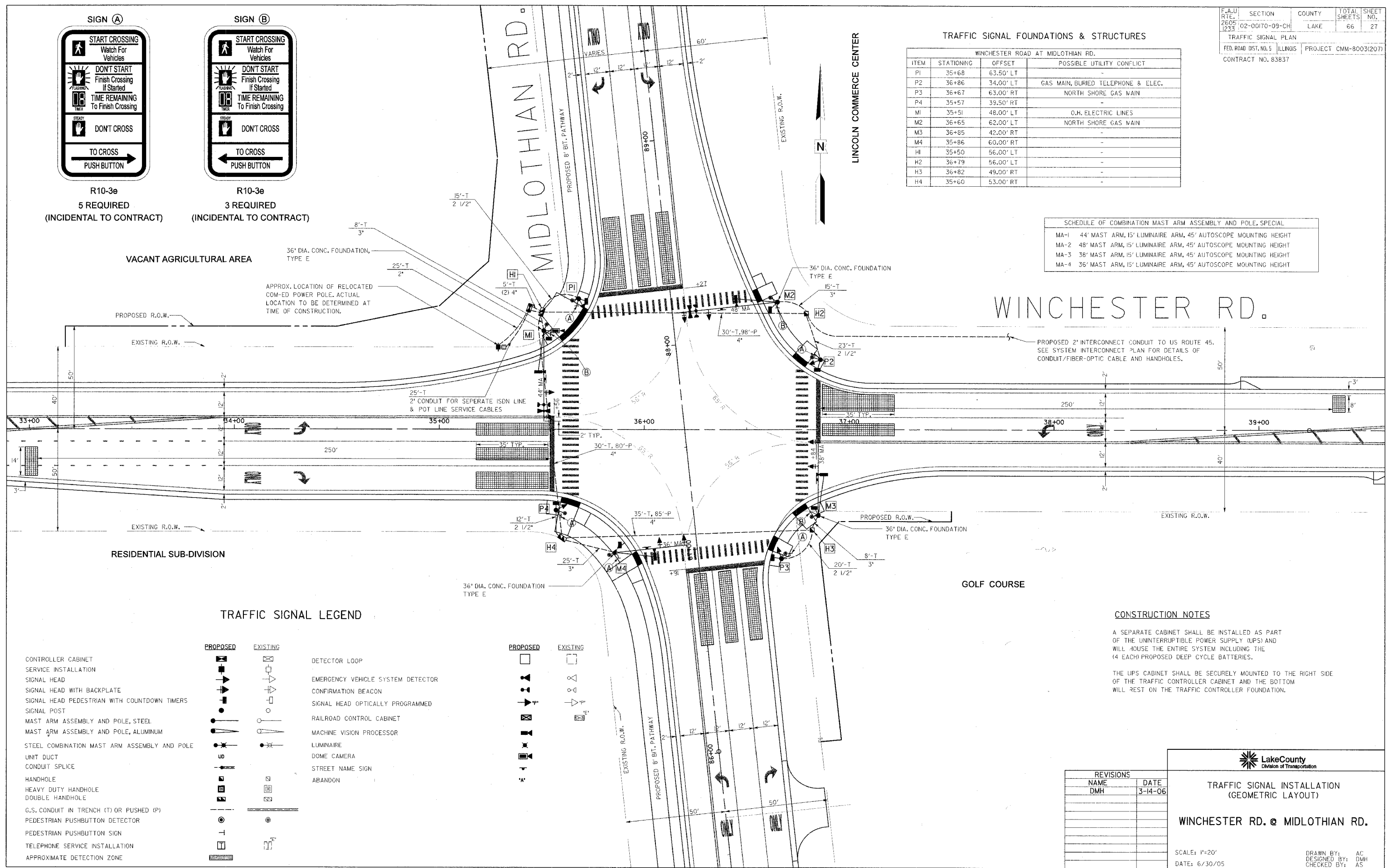
ITEM	STATIONING	OFFSET	POSSIBLE UTILITY CONFLICT
P1	35+68	63.50' LT	-
P2	36+86	34.00' LT	GAS MAIN, BURIED TELEPHONE & ELEC.
P3	36+67	63.00' RT	NORTH SHORE GAS MAIN
P4	35+57	39.50' RT	-
M1	35+51	48.00' LT	O.H. ELECTRIC LINES
M2	36+65	62.00' LT	NORTH SHORE GAS MAIN
M3	36+85	42.00' RT	-
M4	35+86	60.00' RT	-
H1	35+50	56.00' LT	-
H2	36+79	56.00' LT	-
H3	36+82	49.00' RT	-
H4	35+60	53.00' RT	-

SCHEDULE OF COMBINATION MAST ARM ASSEMBLY AND POLE, SPECIAL	
MA-1	44' MAST ARM, 15' LUMINAIRE ARM, 45' AUTOSCOPE MOUNTING HEIGHT
MA-2	48' MAST ARM, 15' LUMINAIRE ARM, 45' AUTOSCOPE MOUNTING HEIGHT
MA-3	38' MAST ARM, 15' LUMINAIRE ARM, 45' AUTOSCOPE MOUNTING HEIGHT
MA-4	36' MAST ARM, 15' LUMINAIRE ARM, 45' AUTOSCOPE MOUNTING HEIGHT



R10-3e
5 REQUIRED
(INCIDENTAL TO CONTRACT)

R10-3e
3 REQUIRED
(INCIDENTAL TO CONTRACT)



TRAFFIC SIGNAL LEGEND

PROPOSED	EXISTING	DESCRIPTION
[Symbol]	[Symbol]	CONTROLLER CABINET
[Symbol]	[Symbol]	SERVICE INSTALLATION
[Symbol]	[Symbol]	SIGNAL HEAD
[Symbol]	[Symbol]	SIGNAL HEAD WITH BACKPLATE
[Symbol]	[Symbol]	SIGNAL HEAD PEDESTRIAN WITH COUNTDOWN TIMERS
[Symbol]	[Symbol]	SIGNAL POST
[Symbol]	[Symbol]	MAST ARM ASSEMBLY AND POLE, STEEL
[Symbol]	[Symbol]	MAST ARM ASSEMBLY AND POLE, ALUMINUM
[Symbol]	[Symbol]	STEEL COMBINATION MAST ARM ASSEMBLY AND POLE
[Symbol]	[Symbol]	UNIT DUCT
[Symbol]	[Symbol]	CONDUIT SPLICE
[Symbol]	[Symbol]	HANDHOLE
[Symbol]	[Symbol]	HEAVY DUTY HANDHOLE
[Symbol]	[Symbol]	DOUBLE HANDHOLE
[Symbol]	[Symbol]	G.S. CONDUIT IN TRENCH (T) OR PUSHED (P)
[Symbol]	[Symbol]	PEDESTRIAN PUSHBUTTON DETECTOR
[Symbol]	[Symbol]	PEDESTRIAN PUSHBUTTON SIGN
[Symbol]	[Symbol]	TELEPHONE SERVICE INSTALLATION
[Symbol]	[Symbol]	APPROXIMATE DETECTION ZONE
[Symbol]	[Symbol]	DETECTOR LOOP
[Symbol]	[Symbol]	EMERGENCY VEHICLE SYSTEM DETECTOR
[Symbol]	[Symbol]	CONFIRMATION BEACON
[Symbol]	[Symbol]	SIGNAL HEAD OPTICALLY PROGRAMMED
[Symbol]	[Symbol]	RAILROAD CONTROL CABINET
[Symbol]	[Symbol]	MACHINE VISION PROCESSOR
[Symbol]	[Symbol]	LUMINAIRE
[Symbol]	[Symbol]	DOME CAMERA
[Symbol]	[Symbol]	STREET NAME SIGN
[Symbol]	[Symbol]	ABANDON

CONSTRUCTION NOTES

A SEPARATE CABINET SHALL BE INSTALLED AS PART OF THE UNINTERRUPTIBLE POWER SUPPLY (UPS) AND WILL HOUSE THE ENTIRE SYSTEM INCLUDING THE (4 EACH) PROPOSED DEEP CYCLE BATTERIES.

THE UPS CABINET SHALL BE SECURELY MOUNTED TO THE RIGHT SIDE OF THE TRAFFIC CONTROLLER CABINET AND THE BOTTOM WILL REST ON THE TRAFFIC CONTROLLER FOUNDATION.

REVISIONS		
NAME	DATE	
DMH	3-14-06	

Lake County
Division of Transportation

TRAFFIC SIGNAL INSTALLATION
(GEOMETRIC LAYOUT)

WINCHESTER RD. @ MIDLOTHIAN RD.

SCALE: 1"=20'
DATE: 6/30/05

DRAWN BY: AC
DESIGNED BY: DMH
CHECKED BY: AS

03-07-0042