

TYPICAL PAVEMENT MARKINGS AND RAISED PAVEMENT MARKERS

F.A.U. RTE. 2605 1233	SECTION 02-00170-09-CH	COUNTY LAKE	TOTAL SHEETS 66	SHEET NO. 63
TYPICAL PAVEMENT MARKINGS				
FED. ROAD DIST. NO. 5 ILLINOIS PROJECT CMM-8003(207)				
CONTRACT NO. 83837				

PAVEMENT MARKING GUIDELINES - ENGLISH MEASUREMENTS

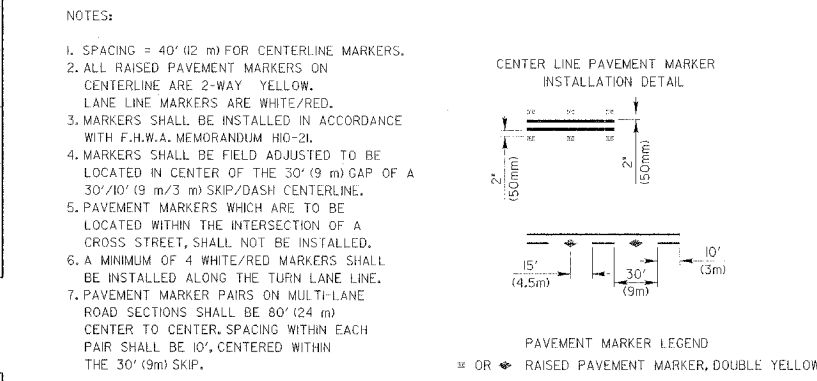
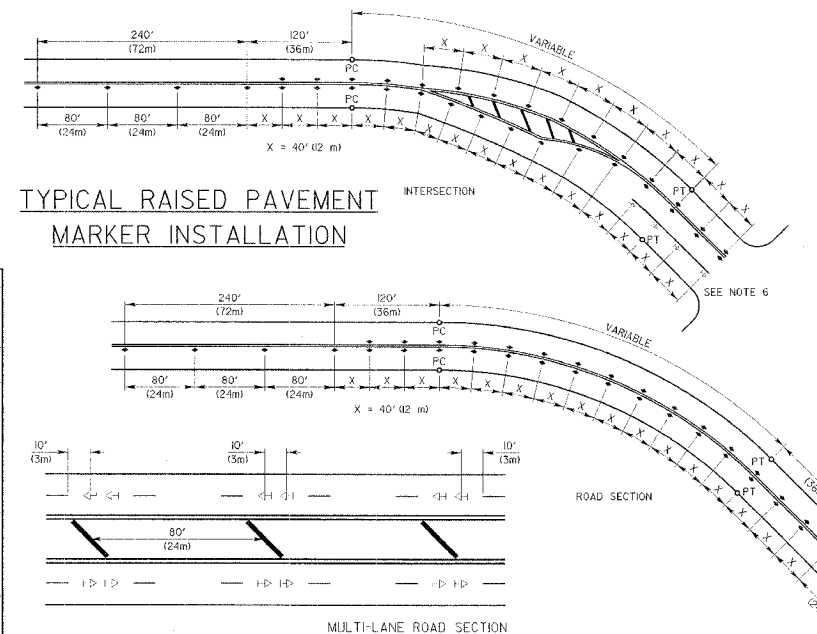
TYPE OF MARKING	WIDTH OF LINE	PATTERN	COLOR	SPACING / REMARKS
CENTERLINE OF 2 LANE PAVEMENT	4 IN.	SKIP-DASH	YELLOW	10 FT. LINE WITH 30 FT. SPACE
NO PASSING ZONE LINES: FOR ONE DIRECTION FOR BOTH DIRECTIONS	4 IN.	SOLID	YELLOW	6 IN. C-C FROM SKIP-DASH CENTERLINE
CENTERLINE ON MULTI-LANE UNDIVIDED LANE LINES	2 @ 4 IN.	SOLID	YELLOW	12 IN. C-C (OMIT SKIP-DASH CENTERLINE BETWEEN)
DOTTED LINES (EXTENSIONS OF CENTERLINE OR TURN LANE MARKINGS)	4 IN.	SKIP-DASH	WHITE	10 FT. LINE WITH 30 FT. SPACE
EDGE LINES	5 IN. WHITE 4 IN. YELLOW	SOLID	WHITE - RIGHT YELLOW - LEFT	2 FT. LINE WITH 6 FT. SPACE
TURN LANE MARKINGS	6 IN. LINE FULL SIZE LETTERS AND SYMBOLS (8 FT.)	SOLID	WHITE	OUTLINE RAISED MEDIANS IN YELLOW
TWO WAY LEFT TURN MARKING	2 @ 4 IN. EACH DIRECTION	SKIP-DASH AND SOLID	YELLOW	TURN ARROW 15.6 SQ. FT. STRAIGHT ARROW 11.5 SQ. FT. ONLY 20.9 SQ. FT. COMB. ARROW 25.0 SQ. FT.
CROSSWALK	12 IN. @ 90°	SOLID	WHITE	10 FT. LINE WITH 30 FT. SPACE FOR SKIP-DASH 6 IN. C-C BETWEEN SKIP-DASH LINE AND SOLID LINE
STOP BARS	24 IN.	SOLID	WHITE	SEE TYPICAL TWO-WAY LEFT TURN MARKING DETAIL
PAINTED MEDIANS	2 @ 4 IN. WITH 12 IN. DIAGONALS @ 45° NO DIAGONALS USED FOR 4 FT. WIDE MEDIAN	SOLID	YELLOW - 2-WAY TRAFFIC WHITE - 1-WAY TRAFFIC	SEE TYPICAL CROSSWALK MARKING DETAIL PLACE 4 FT. IN ADVANCE OF AND PARALLEL TO CROSSWALK, IF PRESENT, OTHERWISE PLACE AT DESIRED STOPPING POINT.
GORE MARKING AND CHANNELIZING LINES	8 IN. WITH 12 IN. DIAGONALS @ 45°	SOLID	WHITE	12 IN. LONGITUDINAL BAR WITH 24/36 IN. SPACE 6 FT. TO 12 FT. WIDE SEE TYPICAL CROSSWALK MARKING DETAIL
R.R. CROSSING	24 IN. TRANSVERSE LINES RR IS 6 FT. LETTER 16 IN. LINE FOR "X"	SOLID	WHITE	DIAGONALS 15 FT. C-C (LESS THAN 30 MPH) 20 FT. C-C (30 TO 45 MPH) 30 FT. C-C (OVER 45 MPH) MINIMUM OF 5 DIAGONALS
SHOULDER DIAGONALS	12 IN. @ 45°	SOLID	WHITE - RIGHT YELLOW - LEFT	SEE 1.D.D.T. STD. 78000 50 FT. AREA OF: "R" = 3.6 SQ. FT. / "R" "X" = 5.40 SQ. FT.

FOR FURTHER DETAILS ON PAVEMENT MARKING REFER TO PART III "MARKINGS" IN THE "ILLINOIS MANUAL ON UNIFORM TRAFFIC CONTROL DEVICES". THE "STANDARD SPECIFICATIONS FOR ROAD AND BRIDGE CONSTRUCTION AND I.D.D.T. HIGHWAY STANDARD 78000" EFFECTIVE JAN. 9, 1998.

PAVEMENT MARKING GUIDELINES - METRIC MEASUREMENTS

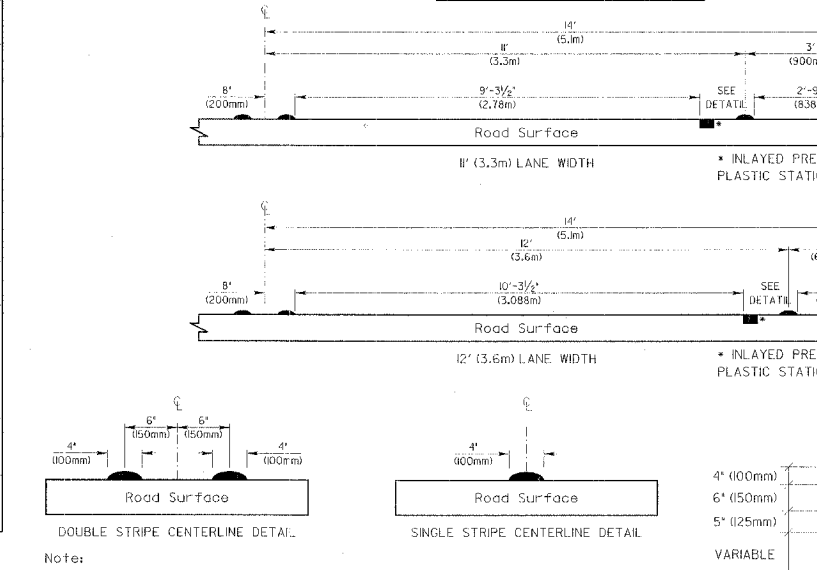
TYPE OF MARKING	WIDTH OF LINE	PATTERN	COLOR	SPACING / REMARKS
CENTERLINE OF 2 LANE PAVEMENT	100 mm	SKIP-DASH	YELLOW	3 m LINE WITH 9 m SPACE
NO PASSING ZONE LINES: FOR ONE DIRECTION FOR BOTH DIRECTIONS	100 mm	SOLID	YELLOW	150 mm C-C FROM SKIP-DASH CENTERLINE
CENTERLINE ON MULTI-LANE UNDIVIDED LANE LINES	2 @ 100 mm	SOLID	YELLOW	300 mm C-C (OMIT SKIP-DASH CENTERLINE BETWEEN)
DOTTED LINES (EXTENSIONS OF CENTERLINE OR TURN LANE MARKINGS)	100 mm	SKIP-DASH	WHITE	3 m LINE WITH 9 m SPACE
EDGE LINES	125 mm WHITE 100 mm YELLOW	SOLID	WHITE - RIGHT YELLOW - LEFT	600 mm LINE WITH 1.8 m SPACE
TURN LANE MARKINGS	150 mm LINE FULL SIZE LETTERS AND SYMBOLS (2.4 m)	SOLID	WHITE	OUTLINE RAISED MEDIANS IN YELLOW
TWO WAY LEFT TURN MARKING	2 @ 100 mm EACH DIRECTION	SKIP-DASH AND SOLID	YELLOW	TURN ARROW 1.5 SQ. m COMB. ARROW 2.4 SQ. m STRAIGHT ARROW 1.50 m ONLY 1.9 SQ. m
CROSSWALK	300 mm @ 90°	SOLID	WHITE	3 m LINE WITH 9 m SPACE FOR SKIP-DASH 150 mm C-C BETWEEN SKIP-DASH LINE AND SOLID LINE
STOP BARS	600 mm	SOLID	WHITE	SEE TYPICAL TWO-WAY LEFT TURN MARKING DETAIL
PAINTED MEDIANS	2 @ 100 mm WITH 300 mm DIAGONALS @ 45° NO DIAGONALS USED FOR 1.2 m WIDE MEDIAN	SOLID	YELLOW - 2-WAY TRAFFIC WHITE - 1-WAY TRAFFIC	SEE TYPICAL CROSSWALK MARKING DETAIL PLACE 1.2 m IN ADVANCE OF AND PARALLEL TO CROSSWALK, IF PRESENT, OTHERWISE PLACE AT DESIRED STOPPING POINT.
GORE MARKING AND CHANNELIZING LINES	200 mm WITH 300 mm DIAGONALS @ 45°	SOLID	WHITE	300 mm C-C FOR THE DOUBLE LINE SEE TYPICAL PAINTED MEDIAN MARKING DETAIL MINIMUM OF 5 DIAGONALS
R.R. CROSSING	400 mm TRANSVERSE LINES RR IS 1.8 m LETTER 400 mm LINE FOR "X"	SOLID	WHITE	DIAGONALS 4.6 m C-C (LESS THAN 30 MPH) 6 m C-C (30 TO 45 MPH) 9 m C-C (OVER 45 MPH) MINIMUM OF 5 DIAGONALS
SHOULDER DIAGONALS	300 mm @ 45°	SOLID	WHITE - RIGHT YELLOW - LEFT	SEE 1.D.D.T. STD. 78000 15.2 m C-C (LESS THAN 30 MPH) 23.0 m C-C (30 TO 45 MPH) 45.7 m C-C (OVER 45 MPH) MINIMUM OF 5 DIAGONALS

FOR FURTHER DETAILS ON PAVEMENT MARKING REFER TO PART III "MARKINGS" IN THE "ILLINOIS MANUAL ON UNIFORM TRAFFIC CONTROL DEVICES". THE "STANDARD SPECIFICATIONS FOR ROAD AND BRIDGE CONSTRUCTION AND I.D.D.T. HIGHWAY STANDARD 78000" EFFECTIVE JAN. 9, 1998.

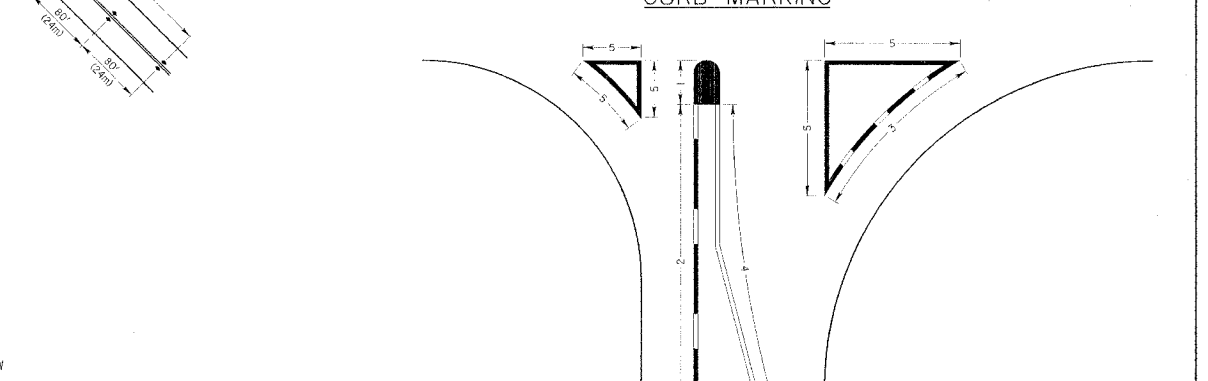
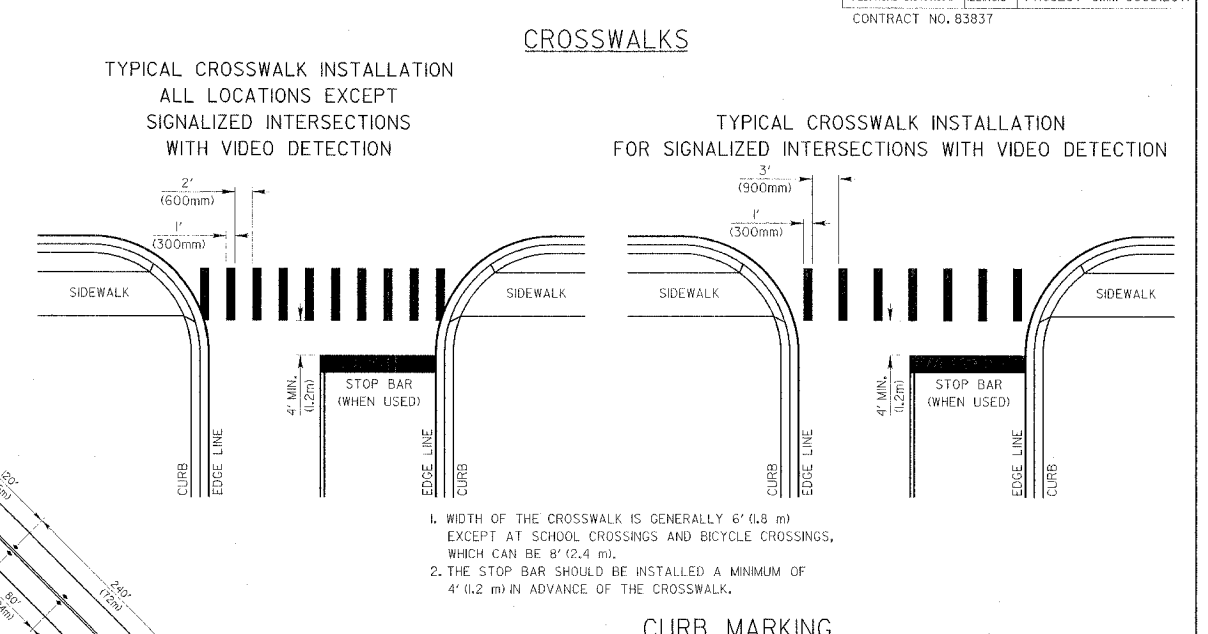


NOTES:
1. SPACING = 40' (12.2 m) FOR CENTERLINE MARKERS.
2. ALL RAISED PAVEMENT MARKERS ON CENTERLINE ARE 2-WAY YELLOW.
3. MARKERS SHALL BE FIELD ADJUSTED TO BE LOCATED IN CENTER OF THE 30' (9 m) GAP OF A 30'/10' (9 m/3 m) SKIP/DASH CENTERLINE.
4. MARKERS WHICH ARE TO BE LOCATED WITHIN THE INTERSECTION OF A CROSS STREET, SHALL NOT BE INSTALLED.
5. A MINIMUM OF 4 WHITE/RED MARKERS SHALL BE INSTALLED ALONG THE TURN LANE LINE.
6. PAVEMENT MARKER PAIRS ON MULTI-LANE ROAD SECTIONS SHALL BE 80' (24 m) CENTER TO CENTER, SPACING WITHIN EACH PAIR SHALL BE 10', CENTERED WITHIN THE 30' (9 m) SKIP.

PAVEMENT CROSS SECTION SHOWING TYPICAL PAVEMENT MARKINGS (2-LANE ROADWAY)

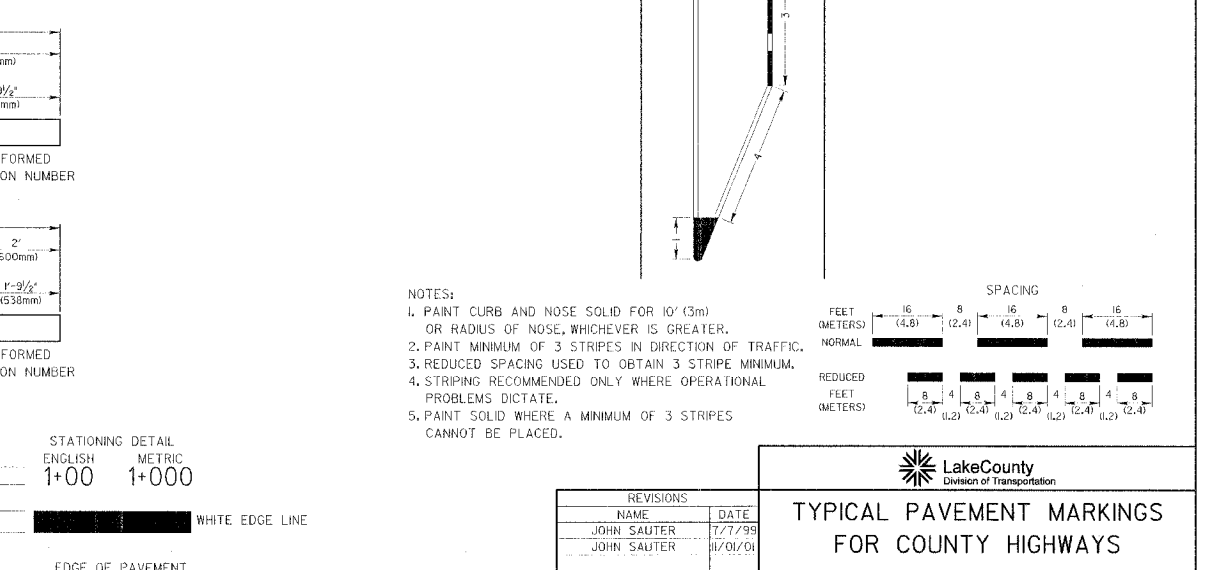


DOUBLE STRIPE CENTERLINE DETAIL
SINGLE STRIPE CENTERLINE DETAIL
Note: Centerline markings are 4" (100mm) lines at 12" (300mm) centers. [Thermoplastic centerline markings are 4" (100mm) lines at 11" (275mm) centers.]



PAVEMENT MARKER LEGEND
OR RAISED PAVEMENT MARKER, DOUBLE YELLOW
- - - RAISED PAVEMENT MARKER, WHITE AND RED

PAVEMENT CROSS SECTION SHOWING TYPICAL PAVEMENT MARKINGS (2-LANE ROADWAY)



STATIONING DETAIL
ENGLISH 1+00
METRIC 1+000
EDGE OF PAVEMENT

CROSSWALKS

TYPICAL CROSSWALK INSTALLATION ALL LOCATIONS EXCEPT SIGNALIZED INTERSECTIONS WITH VIDEO DETECTION

TYPICAL CROSSWALK INSTALLATION FOR SIGNALIZED INTERSECTIONS WITH VIDEO DETECTION

1. WIDTH OF THE CROSSWALK IS GENERALLY 6' (1.8 m) EXCEPT AT SCHOOL CROSSINGS AND BICYCLE CROSSINGS, WHICH CAN BE 8' (2.4 m).
2. THE STOP BAR SHOULD BE INSTALLED A MINIMUM OF 4' (1.2 m) IN ADVANCE OF THE CROSSWALK.

CURB MARKING

1. PAINT CURB AND NOSE SOLID FOR 10' (3m) OR RADIUS OF NOSE, WHICHEVER IS GREATER.
2. PAINT MINIMUM OF 3 STRIPES IN DIRECTION OF TRAFFIC.
3. REDUCED SPACING USED TO OBTAIN 3 STRIPE MINIMUM.
4. STRIPING RECOMMENDED ONLY WHERE OPERATIONAL PROBLEMS DICTATE.
5. PAINT SOLID WHERE A MINIMUM OF 3 STRIPES CANNOT BE PLACED.

FEET (METERS)	SPACING
NORMAL	16 (4.8), 8 (2.4), 16 (4.8), 8 (2.4), 16 (4.8)
REDUCED	8 (2.4), 4 (1.2), 8 (2.4), 4 (1.2), 8 (2.4), 4 (1.2), 8 (2.4)

REVISIONS	DATE
JOHN SAUTER	7/7/99
JOHN SAUTER	11/7/01

TYPICAL PAVEMENT MARKINGS FOR COUNTY HIGHWAYS

SCALE: NONE SHEET 2 OF 3 DRAWN BY: JPS
DATE: JAN. 12, 1998 CHECKED BY: ANK