

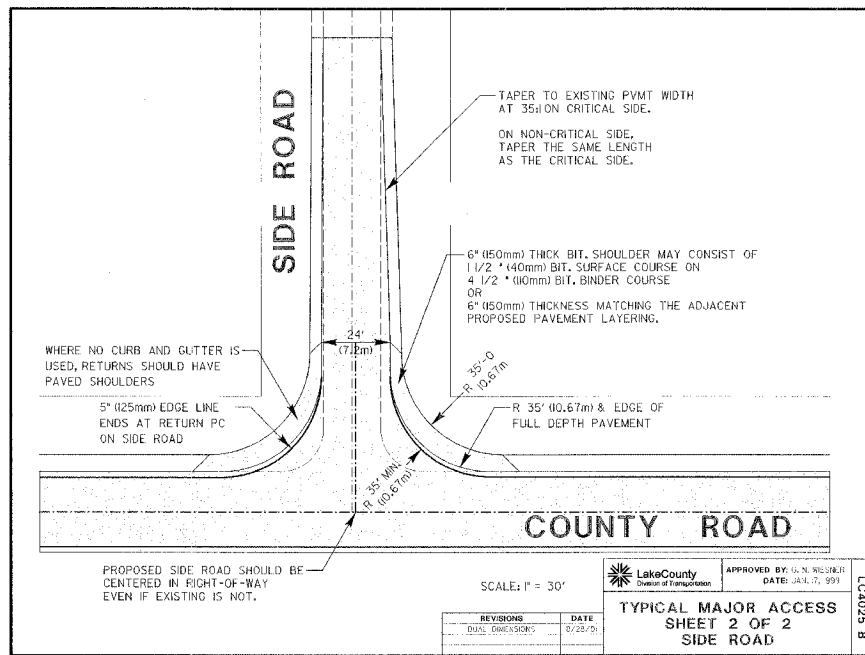
LAKE COUNTY
Division of Transportation

APPROVED BY: G. N. WESLER
DATE: JUN. 7, 1993

REVISIONS: [Table with 2 columns: REVISIONS, DATE]

SCALE: 1" = 5'

TRIANGULAR SILT DIKE
INSTALLATION FOR
ROADWAY DITCH OR
DRAINAGE DITCH



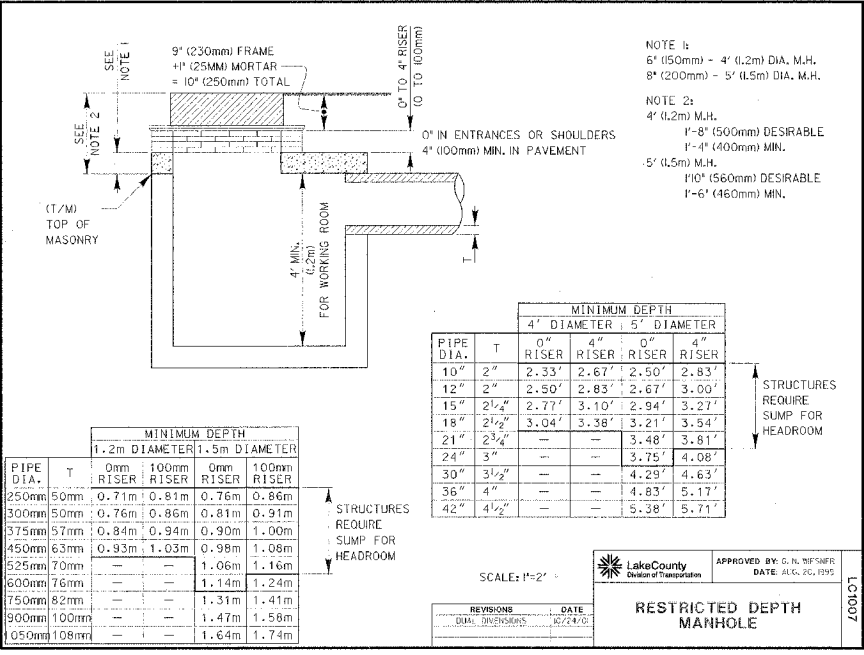
LAKE COUNTY
Division of Transportation

APPROVED BY: G. N. WESLER
DATE: JUN. 7, 1993

REVISIONS: [Table with 2 columns: REVISIONS, DATE]

SCALE: 1" = 30'

TYPICAL MAJOR ACCESS
SHEET 2 OF 2
SIDE ROAD



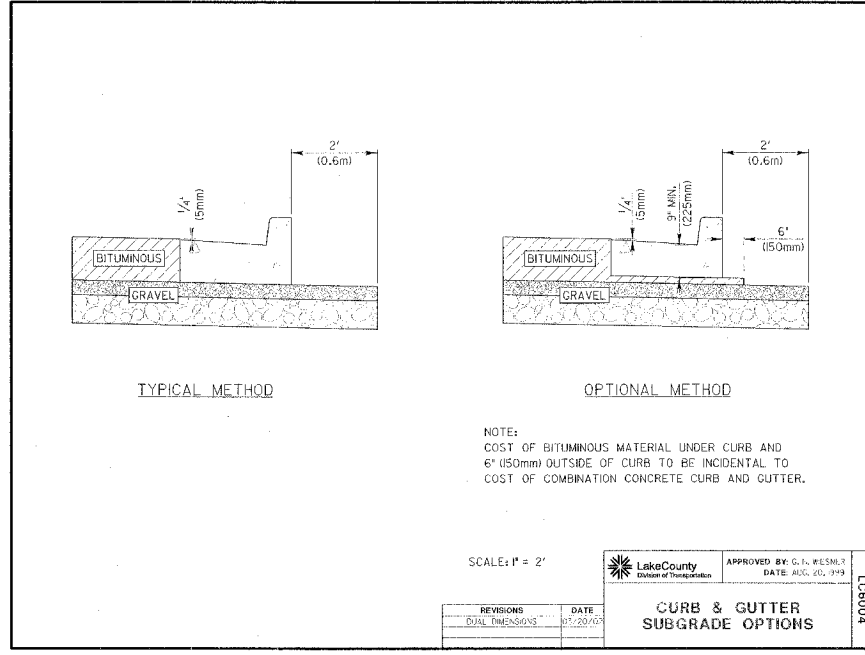
LAKE COUNTY
Division of Transportation

APPROVED BY: G. N. WESLER
DATE: AUG. 20, 1995

REVISIONS: [Table with 2 columns: REVISIONS, DATE]

SCALE: 1" = 2'

RESTRICTED DEPTH
MANHOLE



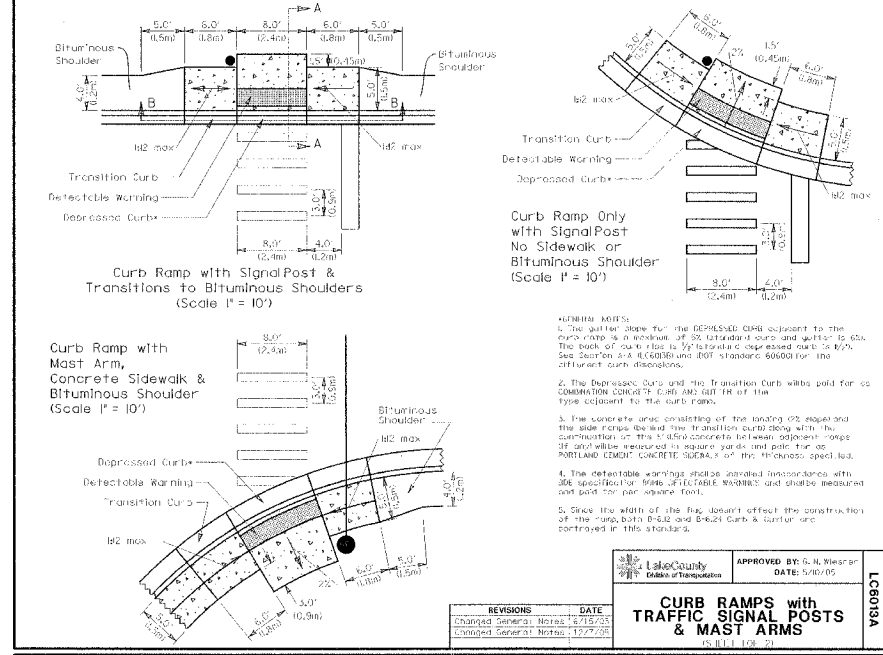
LAKE COUNTY
Division of Transportation

APPROVED BY: G. N. WESLER
DATE: AUG. 20, 1995

REVISIONS: [Table with 2 columns: REVISIONS, DATE]

SCALE: 1" = 2'

CURB & GUTTER
SUBGRADE OPTIONS



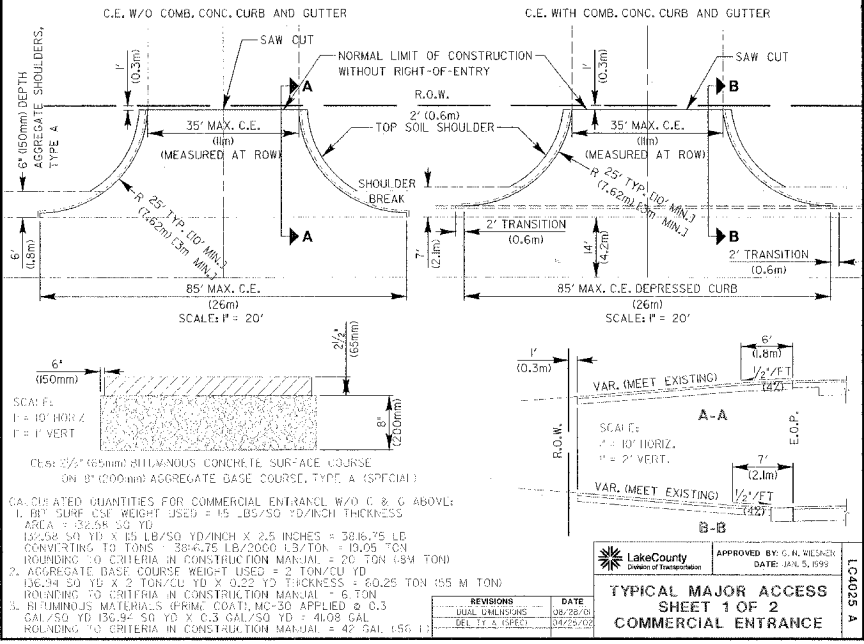
LAKE COUNTY
Division of Transportation

APPROVED BY: G. N. WESLER
DATE: 5/10/05

REVISIONS: [Table with 2 columns: REVISIONS, DATE]

SCALE: 1" = 10'

CURB RAMPS WITH
TRAFFIC SIGNAL POSTS
& MAST ARMS



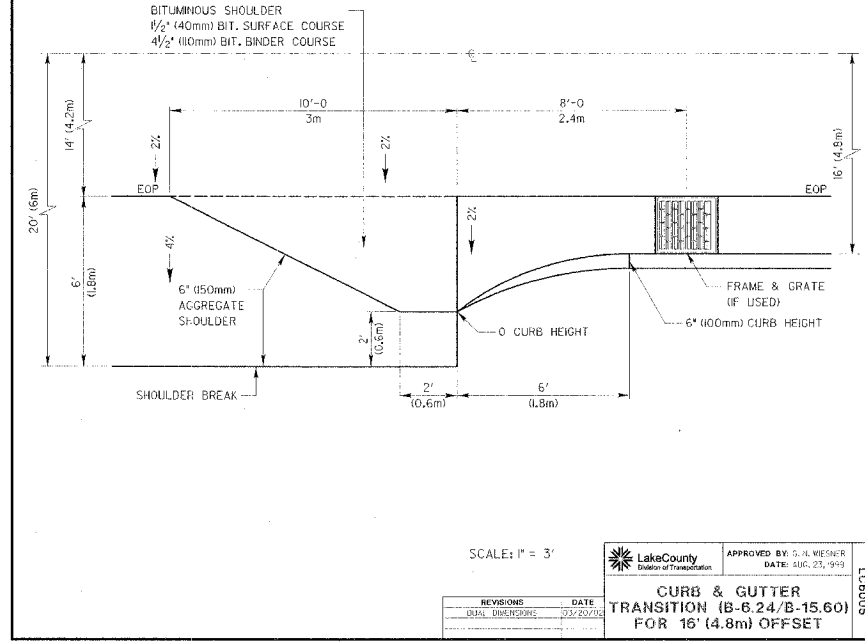
LAKE COUNTY
Division of Transportation

APPROVED BY: G. N. WESLER
DATE: JUN. 5, 1999

REVISIONS: [Table with 2 columns: REVISIONS, DATE]

SCALE: 1" = 20'

TYPICAL MAJOR ACCESS
SHEET 1 OF 2
COMMERCIAL ENTRANCE



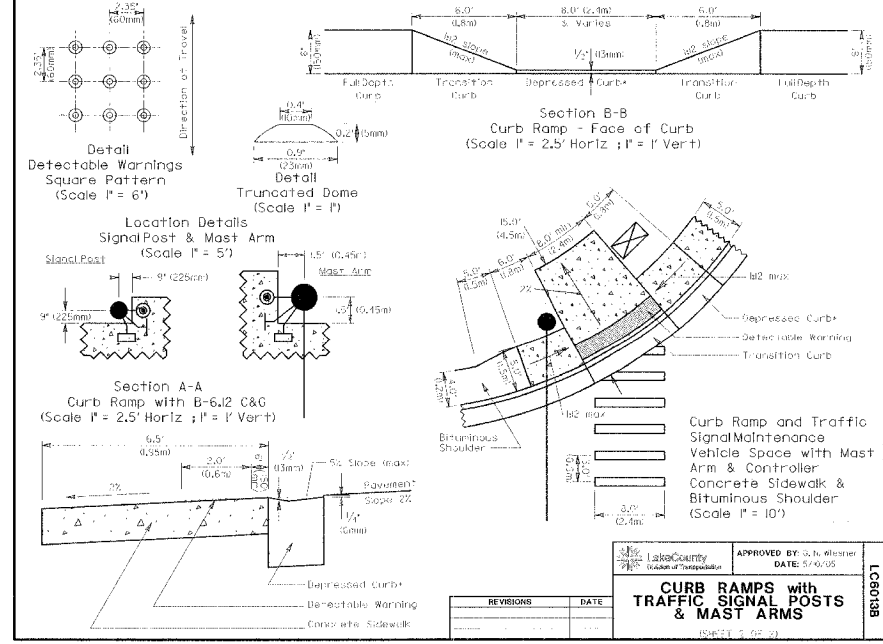
LAKE COUNTY
Division of Transportation

APPROVED BY: G. N. WESLER
DATE: AUG. 21, 1993

REVISIONS: [Table with 2 columns: REVISIONS, DATE]

SCALE: 1" = 3'

CURB & GUTTER
TRANSITION (B-6.24/B-15.60)
FOR 16' (4.8m) OFFSET



LAKE COUNTY
Division of Transportation

APPROVED BY: G. N. WESLER
DATE: 5/10/05

REVISIONS: [Table with 2 columns: REVISIONS, DATE]

SCALE: 1" = 10'

CURB RAMPS WITH
TRAFFIC SIGNAL POSTS
& MAST ARMS