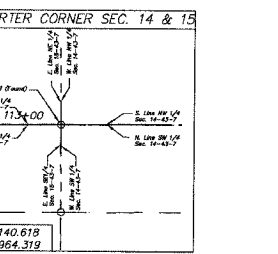
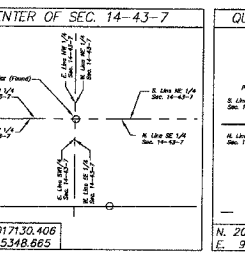
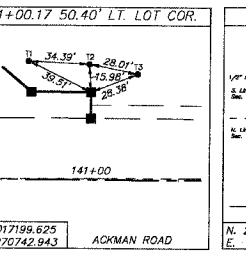
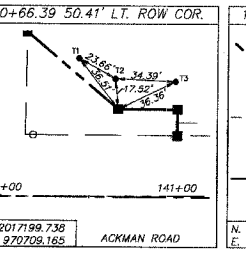
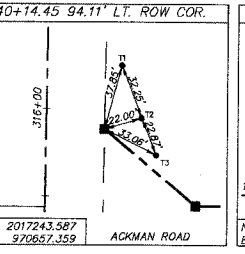
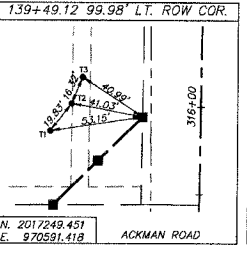
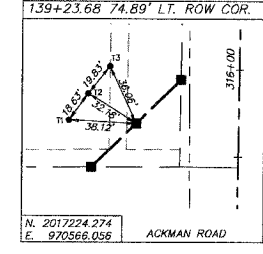
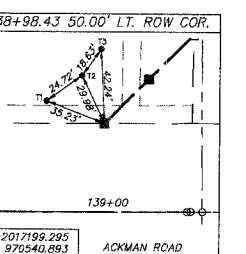
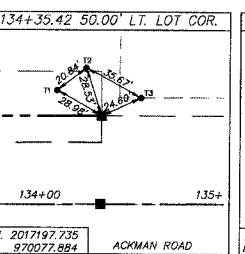
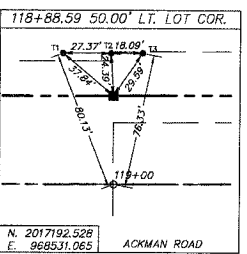
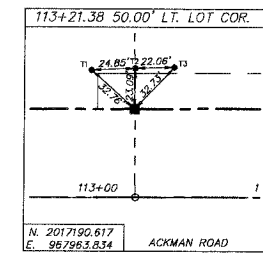
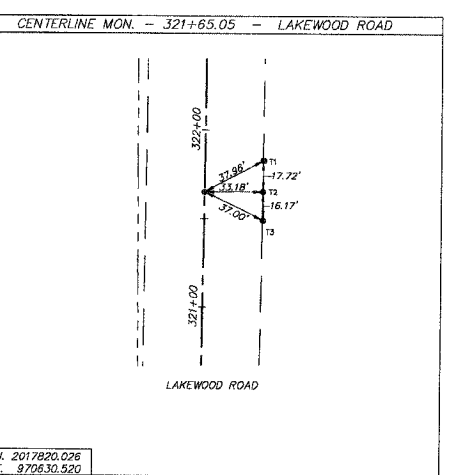
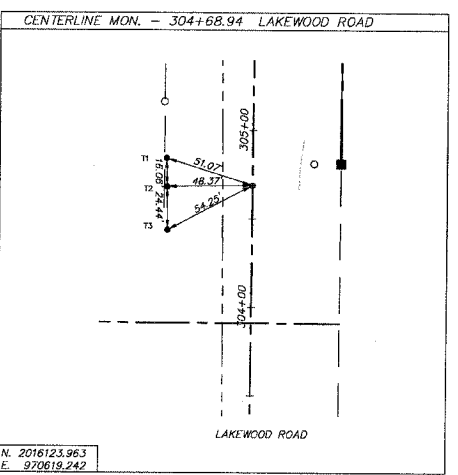
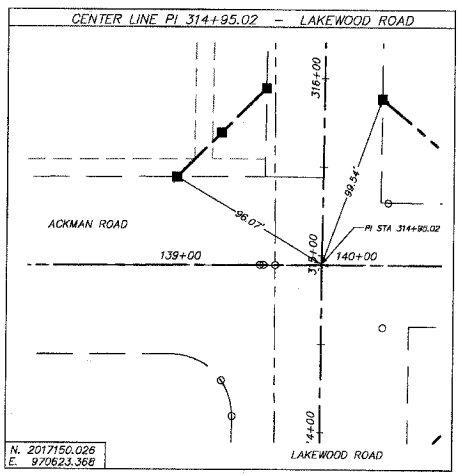
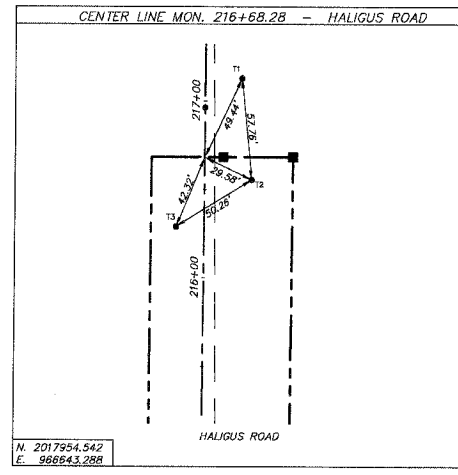
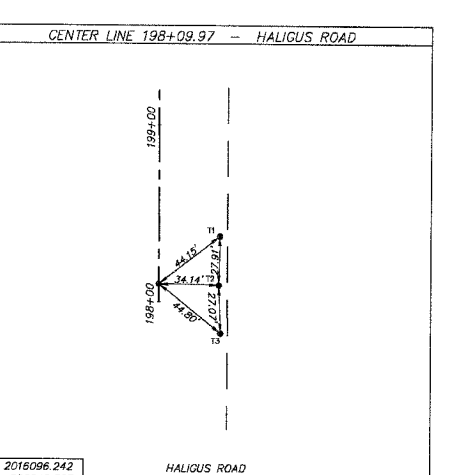
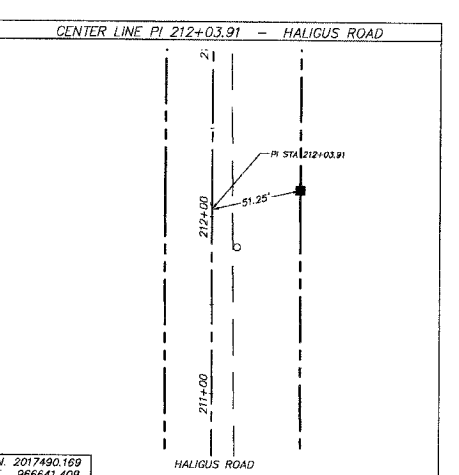
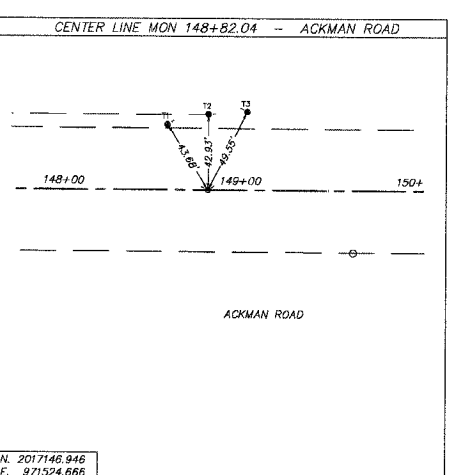
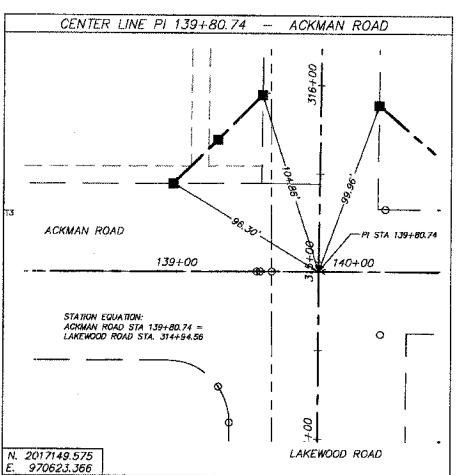
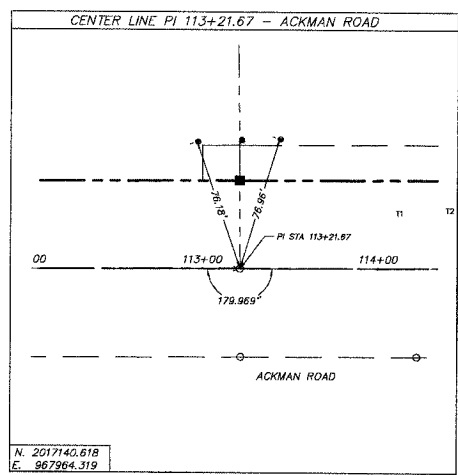
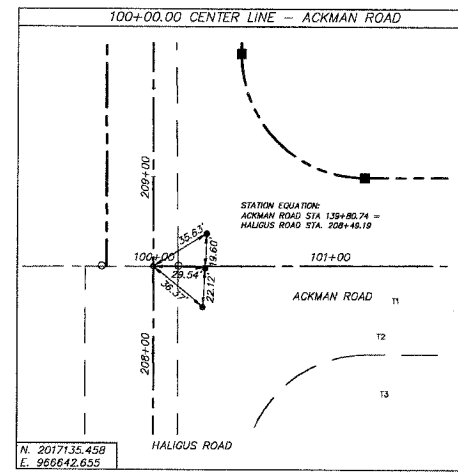


F.A.U. RTE.	SECTION	COUNTY	TOTAL SHEETS	SHEET NO.
3873 00-00243-00-FP		MCHENRY	84	16
STA.	TO STA.			
FED. ROAD DIST. NO. 1	ILLINOIS	HIGHWAY PROJECT		
83840				



REVISIONS	
NAME	DATE
7.	
6.	
5.	
4.	
3.	
2.	
1.	

**SMITH ENGINEERING CONSULTANTS, INC.**  
 CIVIL/STRUCTURAL ENGINEERS AND SURVEYORS  
 4500 PROBE PARKWAY, SUITE 201  
 MCHENRY, ILLINOIS 60050  
 PH: 815-385-1778 FAX: 815-385-1781  
 www.smithengineering.com E-MAIL: see@smithengineering.com  
 MCHENRY HUNTLEY YORKVILLE  
 ILLINOIS PROFESSIONAL DESIGN FIRM # 184-000108

**MCHENRY COUNTY DIVISION OF TRANSPORTATION**  
**ACKMAN ROAD EXTENSION**  
**ALIGNMENT AND TIES**

SCALE: DATE 04-16-04

DRAWN BY CJP  
 CHECKED BY TEH

PLT FILE: AS  
 VISA: CJK  
 COMP. FILE: 000210 align\_ties.dwg