

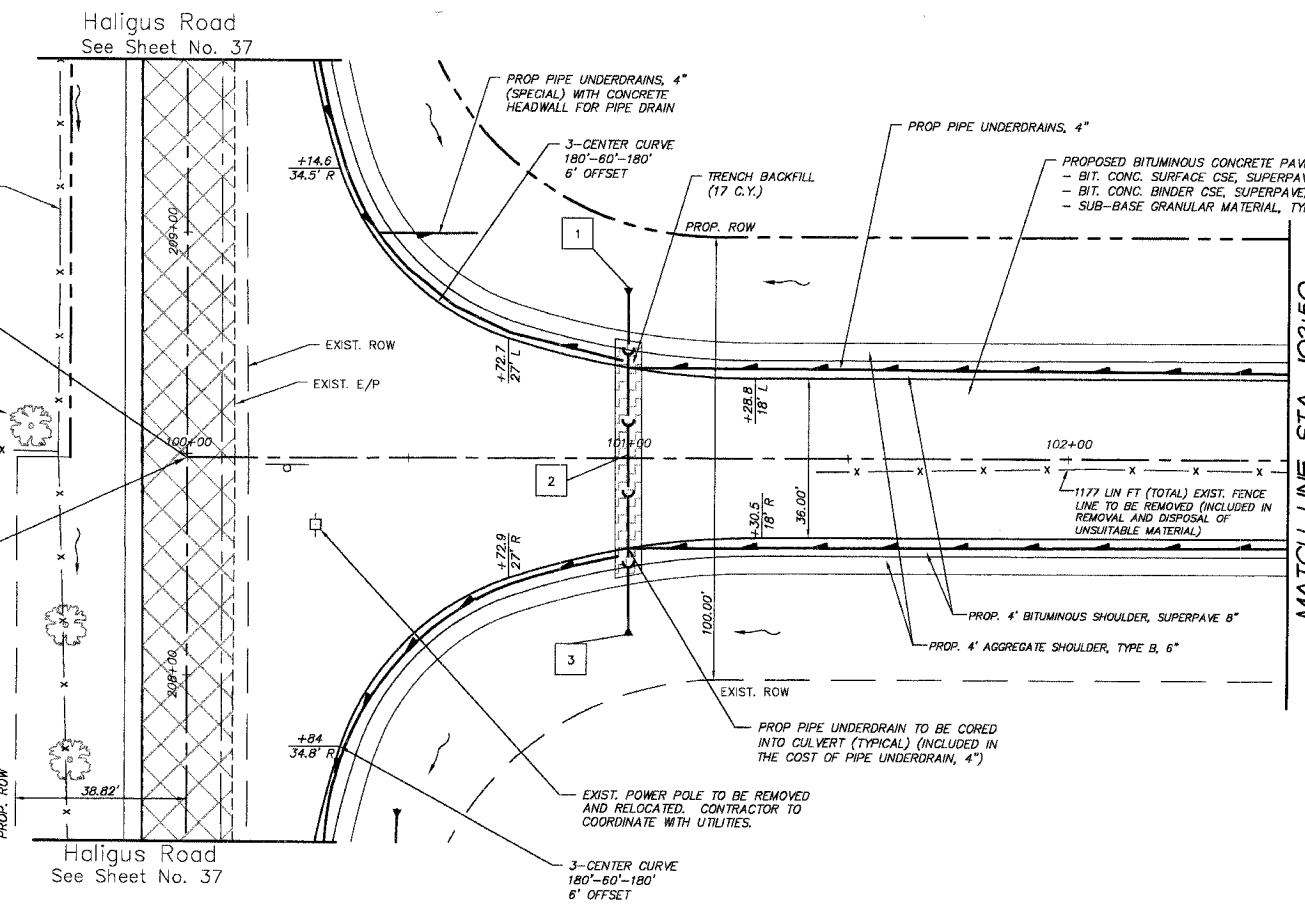
F.A.P. RTE.	SECTION	COUNTY	TOTAL SHEETS	SHEET NO.
3873	00-00243-00-FP	MCHENRY	84	25
STA.	100+00	TO STA.	102+50	
FED. ROAD DIST. NO.	ILLINOIS HIGHWAY PROJECT		83840	



LIMITS OF BITUMINOUS CONCRETE PAVEMENT (FULL DEPTH) SUPERPAVE, 13" ON HALIGUS ROAD IS STA 207+22 TO STA. 209+72. OUTSIDE OF THOSE LIMITS, BITUMINOUS CONCRETE PAVEMENT (FULL DEPTH) SUPERPAVE, 10" SHALL BE CONSTRUCTED.

STA. EQUATION
 STA. 100+00 (ACKMAN) =
 STA. 208+49.19 (LAKEWOOD)

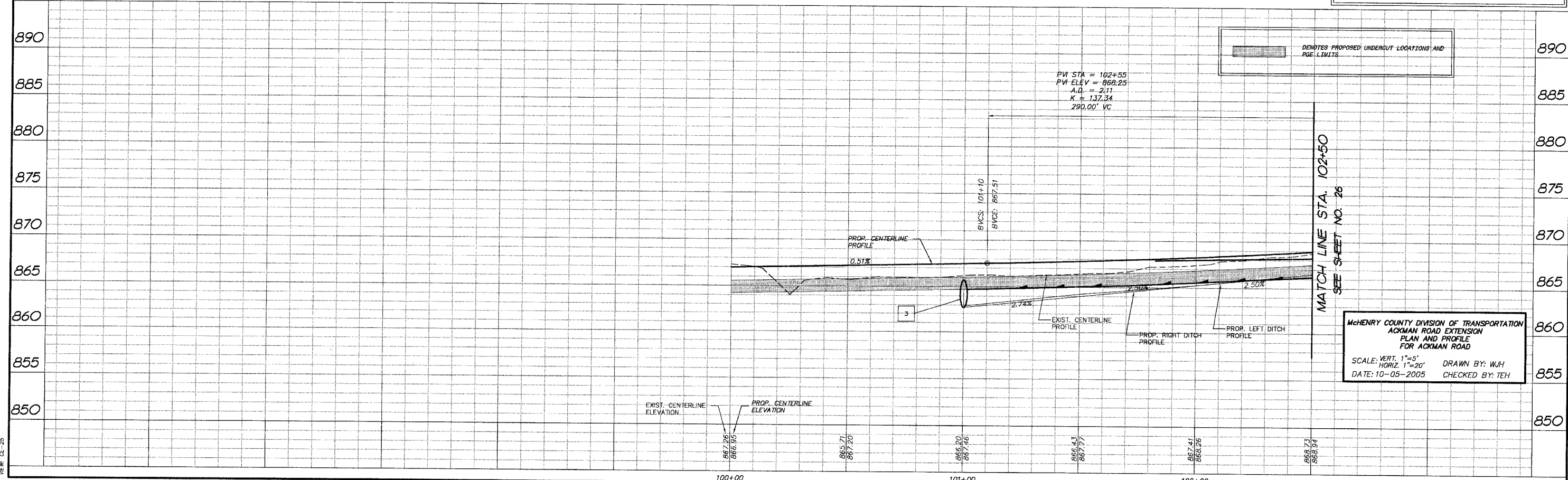
BEGIN ACKMAN ROAD IMPROVEMENTS STA. 100+00.00



#	STORM SEWER TAGS
1	PRC FES EL EQRS 36" W/GRATE STA. 101+00, 38' LT INV = 862.88
2	60 LIN FT PIPE CULV CL A 1 EQRS 36" Ø 0.21%
3	PRC FES EL EQRS 36" W/GRATE STA. 101+00, 30' RT INV = 862.72

PROJECT LEGEND:	
	DENOTES PROPOSED BITUMINOUS PAVEMENT REMOVAL, (FULL DEPTH)
	DENOTES PROPOSED BITUMINOUS SURFACE REMOVAL 1 1/2' & BITUMINOUS RESURFACING
	DENOTES AREA OF TRENCH BACKFILL
	DENOTES PERIMETER EROSION BARRIER (SILT FENCE), INLET & PIPE PROTECTION AND DITCH CHECK
	DENOTES PROPOSED DRAINAGE DIRECTION ARROW
	DENOTES PROPOSED OVERFLOW DIRECTION ARROW
	DENOTES EXIST. TREES TO BE REMOVED GREATER THAN 6" DIA.
	DENOTES EXIST. TREES TO BE REMOVED LESS THAN 6" DIA.

FINAL SURVEY	BY	DATE
SURVEY PLOTTED		
NOTE BOOK		
AREAS CHECKED		
NO.		



MCHENRY COUNTY DIVISION OF TRANSPORTATION
 ACKMAN ROAD EXTENSION
 PLAN AND PROFILE
 FOR ACKMAN ROAD
 SCALE: VERT. 1"=5'
 HORIZ. 1"=20' DRAWN BY: WJH
 DATE: 10-05-2005 CHECKED BY: TEH

COMP. FILE: 030210-602A.dwg
 USER: CE-25
 DATE: 10/5/05