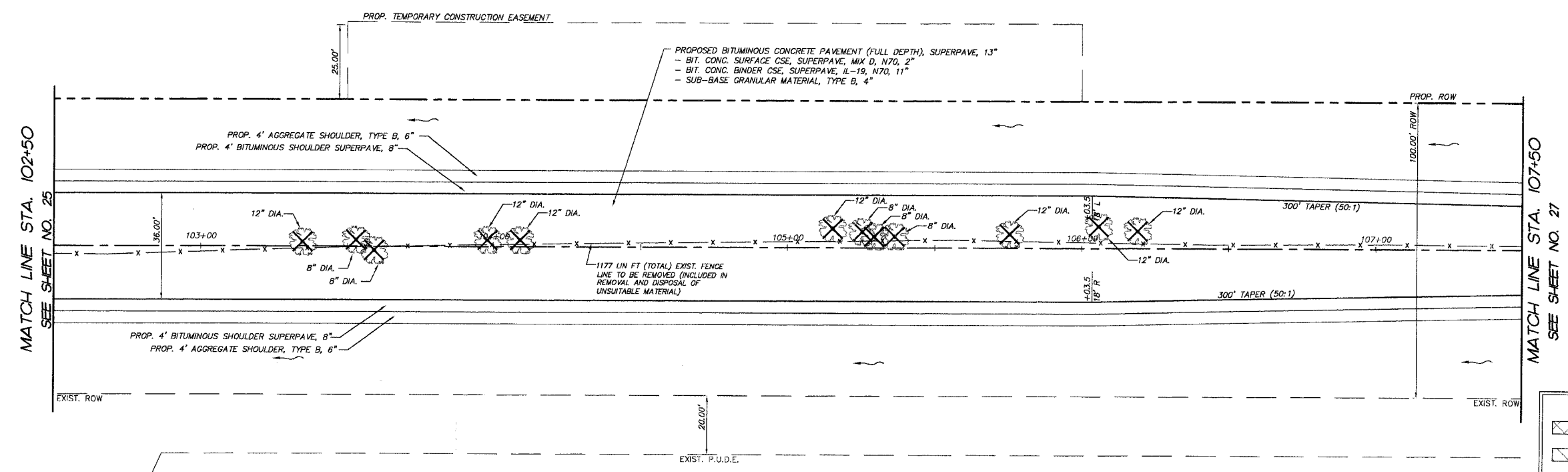


F.A.P. RTE.	SECTION	COUNTY	TOTAL SHEETS	SHEET NO.
3873	00-00243-00-FP	MCHENRY	84	26
STA. 102+50	TO STA. 107+50			
FED. ROAD DIST. NO.		ILLINOIS	HIGHWAY PROJECT	

83840

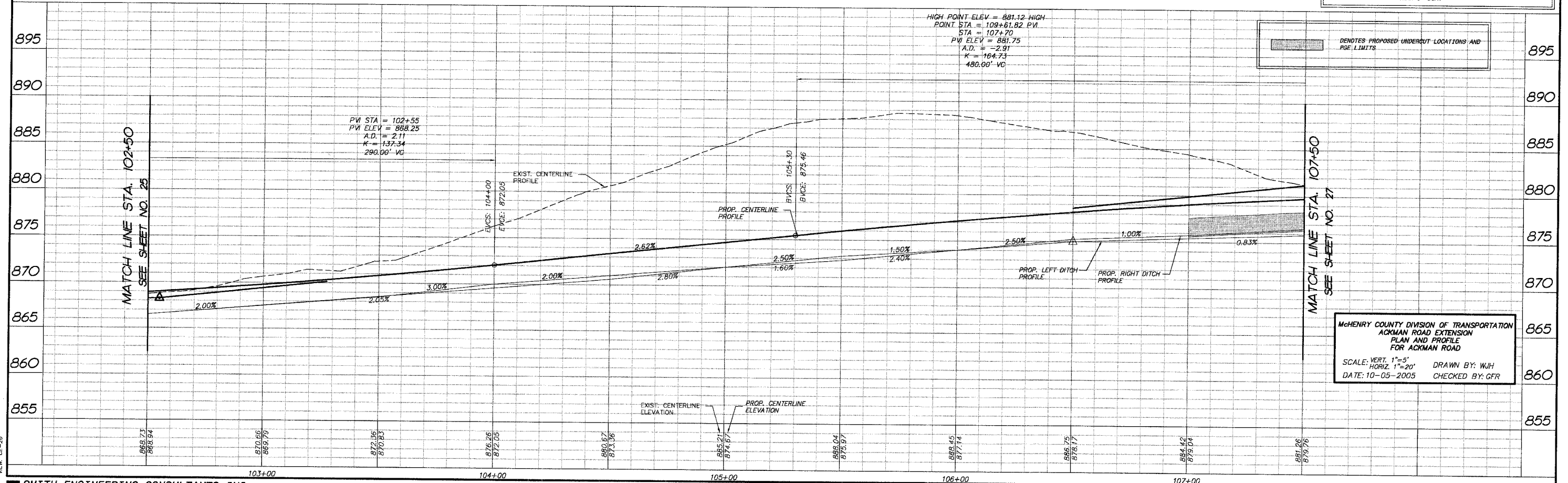
FINAL SURVEY NOTE BOOK NO.	SURVEYED PLOTTED TEMPLATE AREAS CHECKED	BY	DATE



PROJECT LEGEND:

- DENOTES PROPOSED BITUMINOUS PAVEMENT REMOVAL, (FULL DEPTH)
- DENOTES PROPOSED BITUMINOUS SURFACE REMOVAL 1 1/2\"/>

Ackman Road



MCHENRY COUNTY DIVISION OF TRANSPORTATION
 ACKMAN ROAD EXTENSION
 PLAN AND PROFILE
 FOR ACKMAN ROAD
 SCALE: VERT. 1"=5'
 HORIZ. 1"=20'
 DATE: 10-05-2005
 DRAWN BY: WJH
 CHECKED BY: GFR

COMP. FILE: 030210-802A.dwg
 DATE: 10-05-2005
 DRAWN BY: WJH
 CHECKED BY: GFR