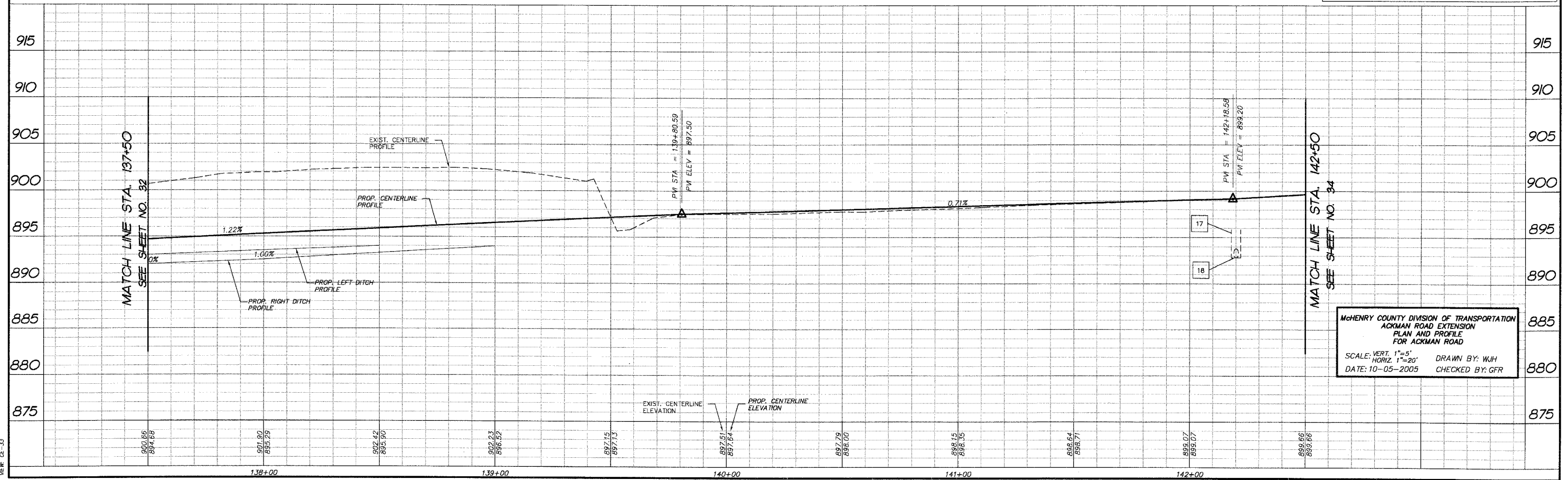
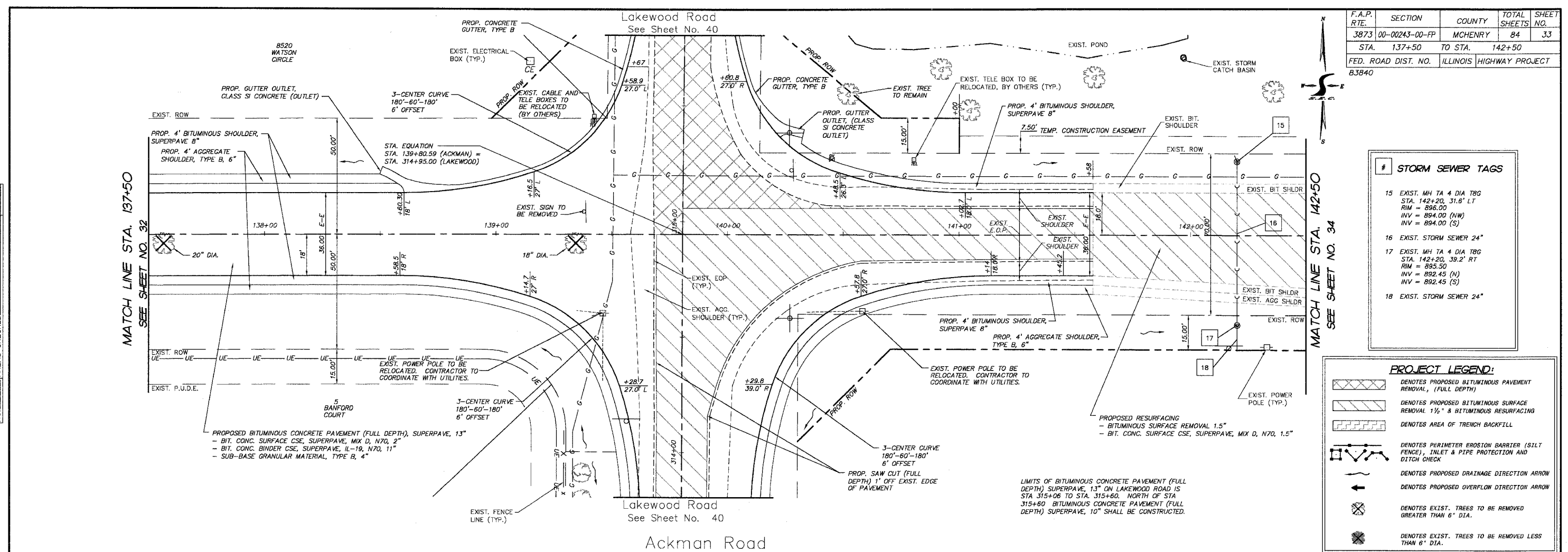


F.A.P. RTE.	SECTION	COUNTY	TOTAL SHEETS	SHEET NO.
3873	00-00243-00-FP	MCHENRY	84	33
STA.	137+50	TO STA.	142+50	
FED. ROAD DIST. NO.	ILLINOIS HIGHWAY PROJECT B3840			

#	STORM SEWER TAGS
15	EXIST. MH TA 4 DIA TBG STA. 142+20, 31.6' LT RIM = 896.00 INV = 894.00 (NW) INV = 894.00 (S)
16	EXIST. STORM SEWER 24"
17	EXIST. MH TA 4 DIA TBG STA. 142+20, 39.2' RT RIM = 895.50 INV = 892.45 (N) INV = 892.45 (S)
18	EXIST. STORM SEWER 24"

PROJECT LEGEND:	
	DENOTES PROPOSED BITUMINOUS PAVEMENT REMOVAL, (FULL DEPTH)
	DENOTES PROPOSED BITUMINOUS SURFACE REMOVAL 1 1/2" & BITUMINOUS RESURFACING
	DENOTES AREA OF TRENCH BACKFILL
	DENOTES PERIMETER EROSION BARRIER (SILT FENCE), INLET & PIPE PROTECTION AND DITCH CHECK
	DENOTES PROPOSED DRAINAGE DIRECTION ARROW
	DENOTES PROPOSED OVERFLOW DIRECTION ARROW
	DENOTES EXIST. TREES TO BE REMOVED GREATER THAN 6" DIA.
	DENOTES EXIST. TREES TO BE REMOVED LESS THAN 6" DIA.

FINAL SURVEY PLOTTED	BY	DATE
NOISE BOOK TEMPLATE		
AREAS CHECKED		
IND.		



McHENRY COUNTY DIVISION OF TRANSPORTATION  
 ACKMAN ROAD EXTENSION  
 PLAN AND PROFILE  
 FOR ACKMAN ROAD  
 SCALE: VERT. 1"=5' HORIZ. 1"=20'  
 DATE: 10-05-2005 DRAWN BY: WJH CHECKED BY: GFR

COMP. FILE: 030210-602A.dwg  
 VIEW: CE-33