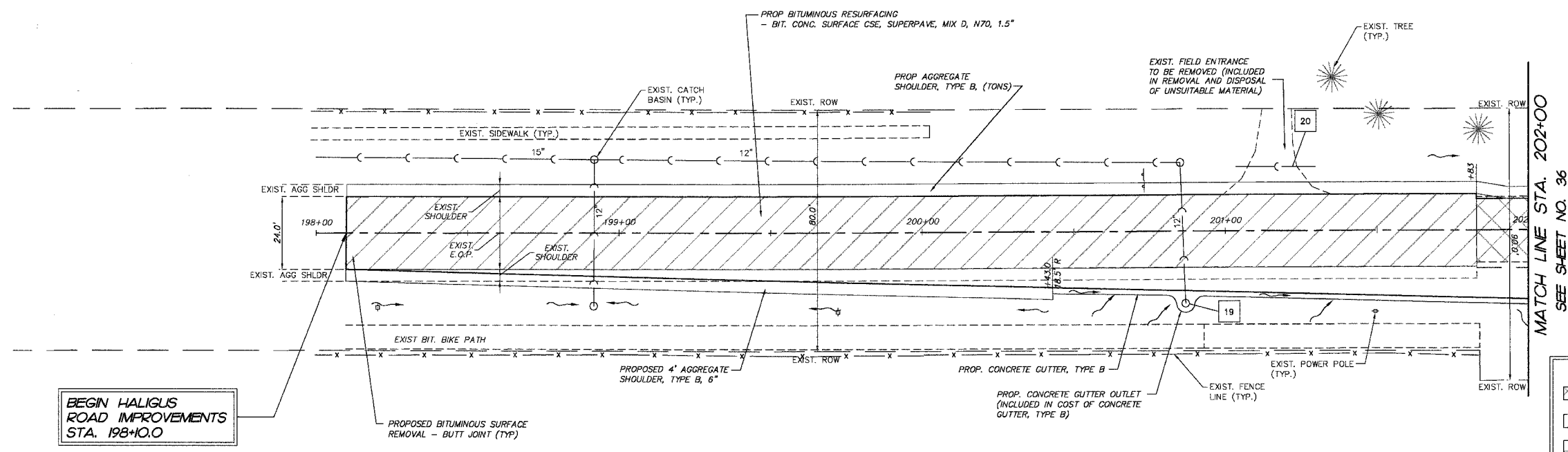


F.A.P. RTE.	SECTION	COUNTY	TOTAL SHEETS	SHEET NO.
3873	00-00243-00-FP	MCHENRY	84	35
STA. 198+00	TO STA. 202+00			
FED. ROAD DIST. NO.	ILLINOIS HIGHWAY PROJECT 83840			



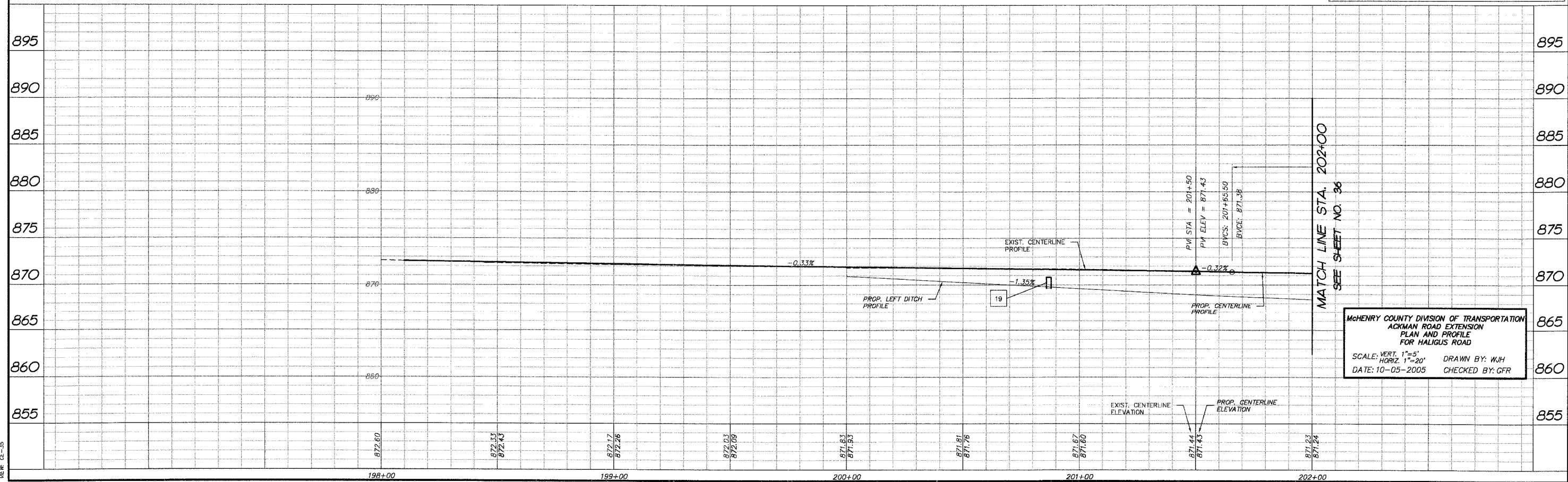
NO.	AREAS CHECKED
	PLATE
	TEMPLATE
	PLOTTED
	SURVEYED
BY	DATE



#	STORM SEWER TAGS
19	EXIST. INLET TO BE ADJUSTED WITH NEW F&G TYPE 1 OL STA. 200+88.88, 24.0' RT PRG. RIM = 870.82
20	EXIST. CMP CULVERT 12" TO BE REMOVED, 26 LIN FT

PROJECT LEGEND:	
	DENOTES PROPOSED BITUMINOUS PAVEMENT REMOVAL, (FULL DEPTH)
	DENOTES PROPOSED BITUMINOUS SURFACE REMOVAL 1 1/2" & BITUMINOUS RESURFACING
	DENOTES AREA OF TRENCH BACKFILL
	DENOTES PERIMETER EROSION BARRIER (SILT FENCE), INLET & PIPE PROTECTION AND DITCH CHECK
	DENOTES PROPOSED DRAINAGE DIRECTION ARROW
	DENOTES PROPOSED OVERFLOW DIRECTION ARROW
	DENOTES EXIST. TREES TO BE REMOVED GREATER THAN 6" DIA.
	DENOTES EXIST. TREES TO BE REMOVED LESS THAN 6" DIA.

Haligus Road



COMP. FILE: 030210-6021.dwg
 DATE: 10-05-2005
 USER: GFR