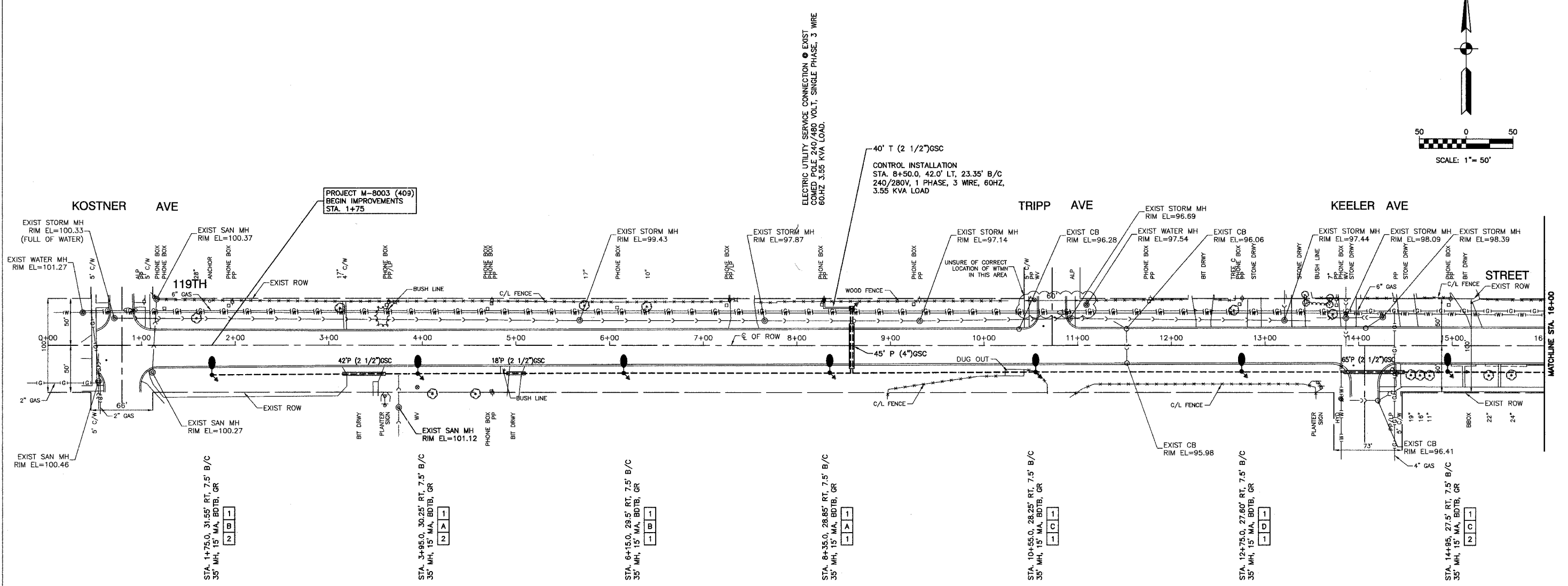
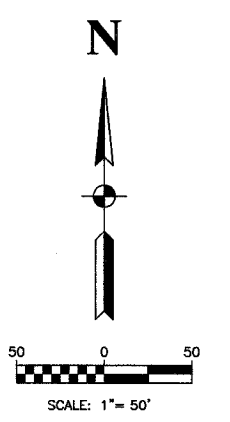


FAZ. RE.	SECTION	COUNTY	TOTAL SHEETS	SHEET NO.
1585	02-00079-00-LT	COOK	9	3
STA.	TO STA.			
FED. ROAD DIST. NO.	BLINDS	FED. AID PROJECT		



STA. 1+75.0, 31.55' RT, 7.5' B/C
35' MH, 15' MA, BDTB, GR

STA. 3+95.0, 30.25' RT, 7.5' B/C
35' MH, 15' MA, BDTB, GR

STA. 6+15.0, 29.5' RT, 7.5' B/C
35' MH, 15' MA, BDTB, GR

STA. 8+35.0, 28.85' RT, 7.5' B/C
35' MH, 15' MA, BDTB, GR

STA. 10+55.0, 28.25' RT, 7.5' B/C
35' MH, 15' MA, BDTB, GR

STA. 12+75.0, 27.60' RT, 7.5' B/C
35' MH, 15' MA, BDTB, GR

STA. 14+95.0, 27.5' RT, 7.5' B/C
35' MH, 15' MA, BDTB, GR

LEGEND

- ⊕ EXISTING COM ED LIGHT ON WOOD POLE
- ⊙ EXISTING POWER POLE
- ⊙ EXISTING STREET LIGHT
- ⊙ PROPOSED LIGHT STANDARD, 250W HPS, 240V, 1PH LUMINAIRE, 35' MH, 15' MA
- ⊙ PROPOSED LIGHTING CONTROLLER
- ⊙ GROUND ROD, 5/8" DIA. x 10'
- CONDUIT, PUSHED, GALVANIZED STEEL, SIZE AS MARKED
- CONDUIT, TRENCHED, GALVANIZED STEEL, SIZE AS MARKED
- UNIT DUCT, 3-1/2" NO.6 AWG AND NO.8 GROUND, 800V IN 1-1/4" POLYETHYLENE DUCT FOR ROADWAY LIGHTING.
- SERVICE WIRE, 3-1/2" NO.1/0
- LT. LEFT
- RT. RIGHT
- MH MOUNTING HEIGHT
- MA MAIST ARM
- B/C BACK OF CURB
- B/EP BACK OF EDGE OF PAVEMENT
- BDTB BREAKAWAY DEVICE, TRANSFORMER BASE, LOW PROFILE TYPE
- GR GROUND ROD, 5/8" DIA. x 10'

ROBINSON ENGINEERING, LTD.
CONSULTING REGISTERED PROFESSIONAL ENGINEERS
AND PROFESSIONAL LAND SURVEYORS
17000 SOUTH PARK AVENUE SOUTH HOLLAND, ILLINOIS 60473
(708) 331-6700 FAX (708) 331-8826

© COPYRIGHT 2006
ILLINOIS DESIGN FIRM REGISTRATION NO. 184001128

**119TH STREET LIGHTING
PLAN SHEET
STA. 1+75.0 TO STA. 16+00**

ALSIP, ILLINOIS

Drawn by: JM	Date:
Checked by: TRL/PAP	Scale: 1"=50'
Sheet 3 of 9	Project No. 02-160.02

REVISIONS		
No.	Date	Remarks