

PROJECT SPONSOR

CITY OF CRYSTAL LAKE MCHENRY COUNTY
PUBLIC WORKS DEPARTMENT DIVISION OF TRANSPORTATION
100 W. MUNICIPAL COMPLEX 16111 NELSON ROAD
P.O. BOX 597 WOODSTOCK, IL 60098-9533
CRYSTAL LAKE, IL 60039-0597 TELEPHONE: 815.334.4960
TELEPHONE: 815.459.2020 FAX: 815.334.4989
FAX: 815.459.235

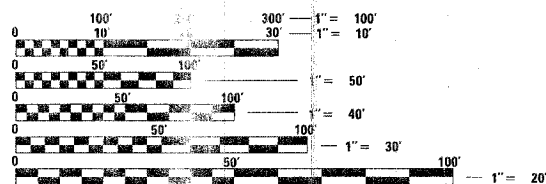
FEBRUARY 17, 2006

INDEX OF SHEETS

- 1. TITLE SHEET
2. GENERAL NOTES, SUMMARY OF QUANTITIES
3. RESURFACING AND PAVEMENT MARKING PLAN
4. SIGNAL INSTALLATION PLAN
5. CABLE PLAN AND PHASE DESIGNATION DIAGRAM
6. MAST ARM STREET NAME SIGN
7-10. IDOT DISTRICT ONE STANDARD TRAFFIC SIGNAL DESIGN DETAILS
11. VIDEO DETECTION DETAILS
12. TC11-IDOT D1 TYPICAL APPLICATIONS - RAISED REFLECTIVE PAVEMENT MARKERS (SNOW PLOW RESISTANT)
13. TC13-IDOT D1 TYPICAL PAVEMENT MARKING STANDARD
14-22. ROADWAY LIGHTING PLANS E1-E9

HIGHWAY STANDARDS (EFFECTIVE 8-5-05)

- 424001-04 CURB RAMPS FOR SIDEWALKS
701006-02 OFF-RD OPERATIONS, 2L, 2W, 15' TO 24" FROM PAVEMENT EDGE
701201-02 LANE CLOSURE, 2L, 2W, DAY ONLY, FOR SPEEDS >= 45 MPH
701301-02 LANE CLOSURE, 2L, 2W, SHORT TIME OPERATIONS
701701-04 URBAN LANE CLOSURE, MULTILANE INTERSECTION
701801-03 LANE CLOSURE, MULTILANE, 1W OR 2W CROSSWALK OR SIDEWALK CLOSURE
702001-06 TRAFFIC CONTROL DEVICES
720001 SIGN PANEL MOUNTING DETAILS
720006 SIGN PANEL ERECTION DETAILS
805001 ELECTRICAL SERVICE INSTALLATION DETAILS
814001 CONCRETE HANDHOLES
814006 DOUBLE HANDHOLES
857001 STANDARD PHASE DESIGNATION DIAGRAMS AND PHASE SEQUENCES
877011-02 STEEL COMBINATION MAST ARM ASSEMBLY AND POLE
878001-04 CONCRETE FOUNDATION DETAILS
880006 TRAFFIC SIGNAL MOUNTING DETAILS



FULL SIZE PLANS HAVE BEEN PREPARED USING STANDARD ENGINEERING SCALES. REDUCED SIZED PLANS WILL NOT CONFORM TO STANDARD SCALES. IN MAKING MEASUREMENTS ON REDUCED PLANS THE ABOVE SCALES MAY BE USED.

J.U.L. JOINT INFORMATION FOR EXCAVATION
1-800-...

CONFIDENTIAL NO. 83844

STATE OF ILLINOIS
DEPARTMENT OF TRANSPORTATION
DIVISION OF HIGHWAYS

PROPOSED TRAFFIC SIGNAL PLANS

ACKMAN ROAD FAU 3873 (CH 42-A46)
AT GOLF COURSE ROAD FAU 3872

SECTION 04-00101-00-TL

PROJECT NO: M-8003 (548)

JOB NO: C-91-083-06

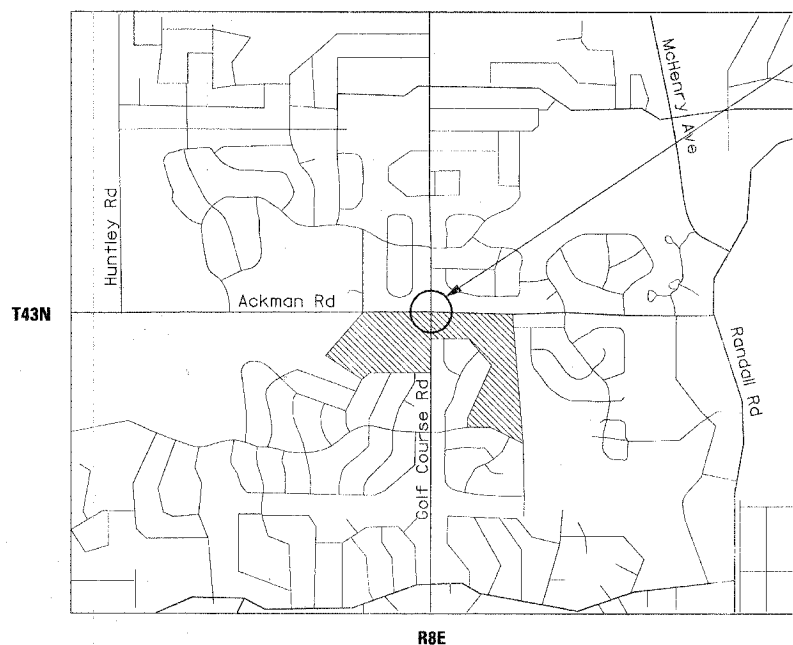
TRAFFIC SIGNAL IMPROVEMENTS

CITY OF CRYSTAL LAKE

MCHENRY COUNTY

ALGONQUIN TOWNSHIP

LOCATION MAP



TRAFFIC SIGNAL IMPROVEMENT



ILLINOIS DEPARTMENT OF PROFESSIONAL REGULATION REGISTRATION NO. 184-000812



I HEREBY CERTIFY THAT THESE PLANS WERE PREPARED UNDER MY DIRECT SUPERVISION.

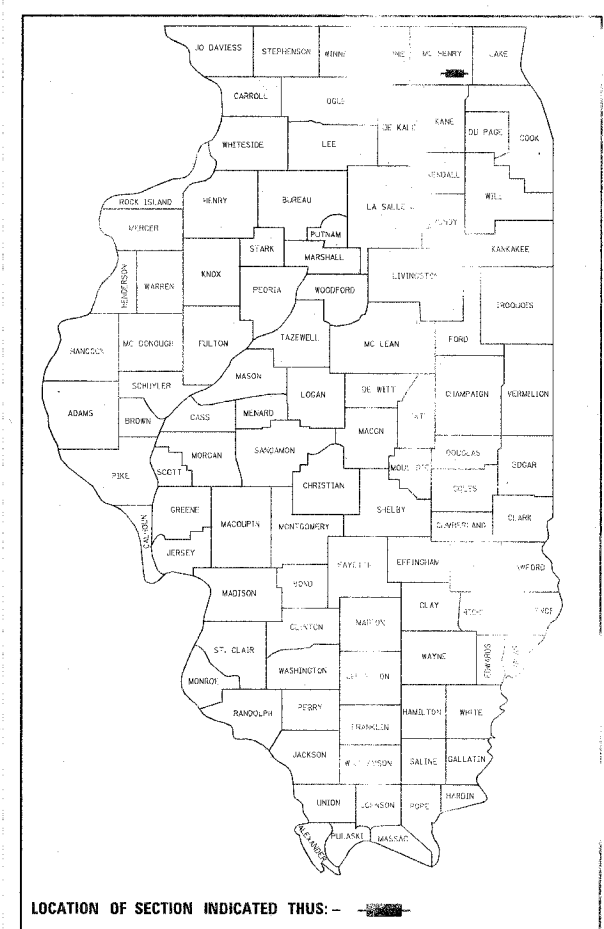
DATED AT ST. CHARLES, ILLINOIS THIS 27th DAY OF February, 2006

Matthew A. Gauntt
MATTHEW GAUNTT
ILLINOIS REG. PROF. ENGINEER NO. 062-050146 EXPIRATION DATE 11-30-2007



Robert H. Anderson & Associates, Inc.
Consulting Engineers & Surveyors
17 Imbers Professional Center
220 West River Drive, St. Charles, IL 60154
Phone - 630.584.3530 Illinois 60174
E-mail - rha@rhaengr.com 630.584.3047

SECTION 04-00101-00-TL COUNTY MCHENRY



CITY OF CRYSTAL LAKE
APPROVED February 23, 2006
[Signature] CITY ENGINEER

COUNTY OF MCHENRY
DIVISION OF TRANSPORTATION
APPROVED FEBRUARY 28, 2006
[Signature] DIRECTOR OF TRANSPORTATION

STATE OF ILLINOIS
DEPARTMENT OF TRANSPORTATION
PASSED March 1, 2006
[Signature] ENGINEER OF LOCAL ROADS AND STREETS
APPROVED March 1, 2006
[Signature] DEPUTY DIRECTOR OF HIGHWAYS REGION ENGINEER

PRINTED BY THE OFFICE OF THE STATE ENGINEER OF ILLINOIS