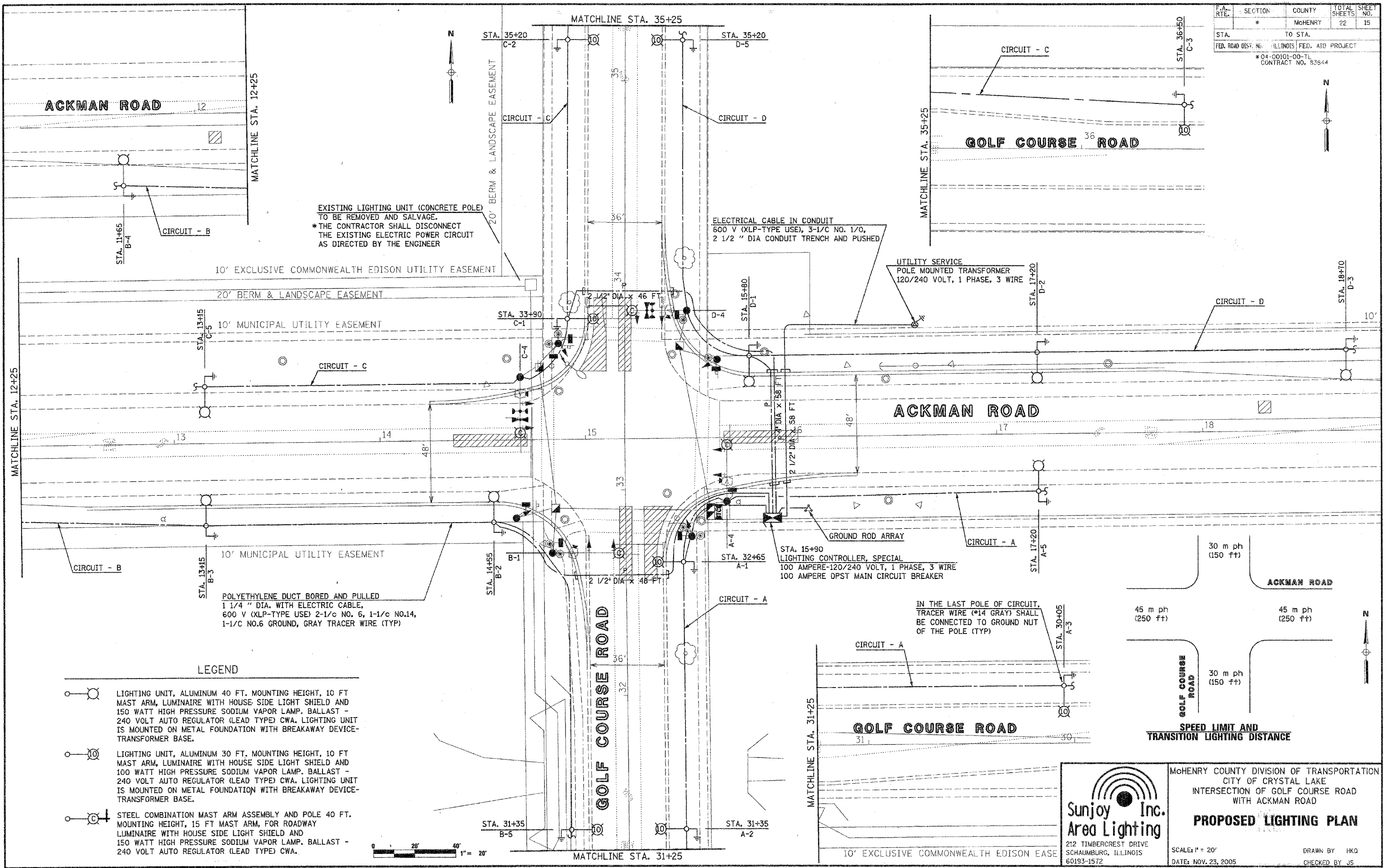
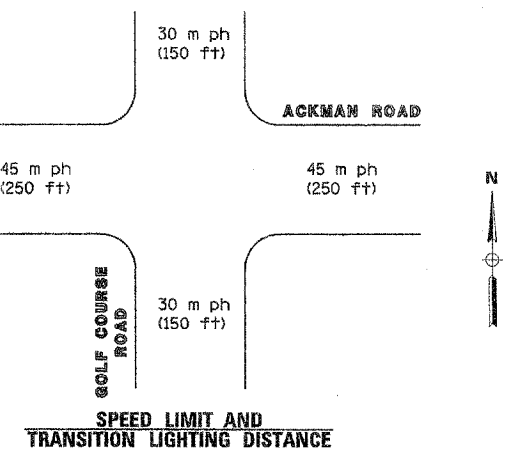


F.A. RTE.	SECTION	COUNTY	TOTAL SHEETS	SHEET NO.
*	McHENRY	ILLINOIS	22	15
STA. 11+65 TO STA. 36+50				
FED. ROAD DIST. NO. 04-00101-00-TL				
ILLINOIS FED. AID PROJECT				
*04-00101-00-TL				
CONTRACT NO. 93644				



- LEGEND**
- LIGHTING UNIT, ALUMINUM 40 FT. MOUNTING HEIGHT, 10 FT MAST ARM, LUMINAIRE WITH HOUSE SIDE LIGHT SHIELD AND 150 WATT HIGH PRESSURE SODIUM VAPOR LAMP. BALLAST - 240 VOLT AUTO REGULATOR (LEAD TYPE) CWA. LIGHTING UNIT IS MOUNTED ON METAL FOUNDATION WITH BREAKAWAY DEVICE-TRANSFORMER BASE.
  - LIGHTING UNIT, ALUMINUM 30 FT. MOUNTING HEIGHT, 10 FT MAST ARM, LUMINAIRE WITH HOUSE SIDE LIGHT SHIELD AND 100 WATT HIGH PRESSURE SODIUM VAPOR LAMP. BALLAST - 240 VOLT AUTO REGULATOR (LEAD TYPE) CWA. LIGHTING UNIT IS MOUNTED ON METAL FOUNDATION WITH BREAKAWAY DEVICE-TRANSFORMER BASE.
  - STEEL COMBINATION MAST ARM ASSEMBLY AND POLE 40 FT. MOUNTING HEIGHT, 15 FT MAST ARM, FOR ROADWAY LUMINAIRE WITH HOUSE SIDE LIGHT SHIELD AND 150 WATT HIGH PRESSURE SODIUM VAPOR LAMP. BALLAST - 240 VOLT AUTO REGULATOR (LEAD TYPE) CWA.



**Sunjoy Inc.**  
Area Lighting

212 TIMBERCREST DRIVE  
SCHAUMBURG, ILLINOIS  
60193-1572

McHENRY COUNTY DIVISION OF TRANSPORTATION  
CITY OF CRYSTAL LAKE  
INTERSECTION OF GOLF COURSE ROAD  
WITH ACKMAN ROAD

**PROPOSED LIGHTING PLAN**

SCALE: 1" = 20'  
DATE: NOV. 23, 2005

DRAWN BY: HKO  
CHECKED BY: JS