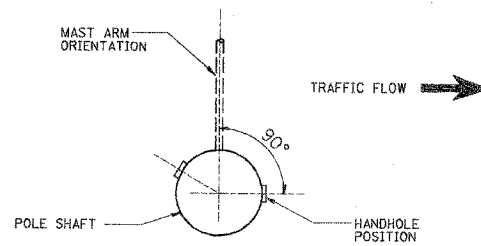
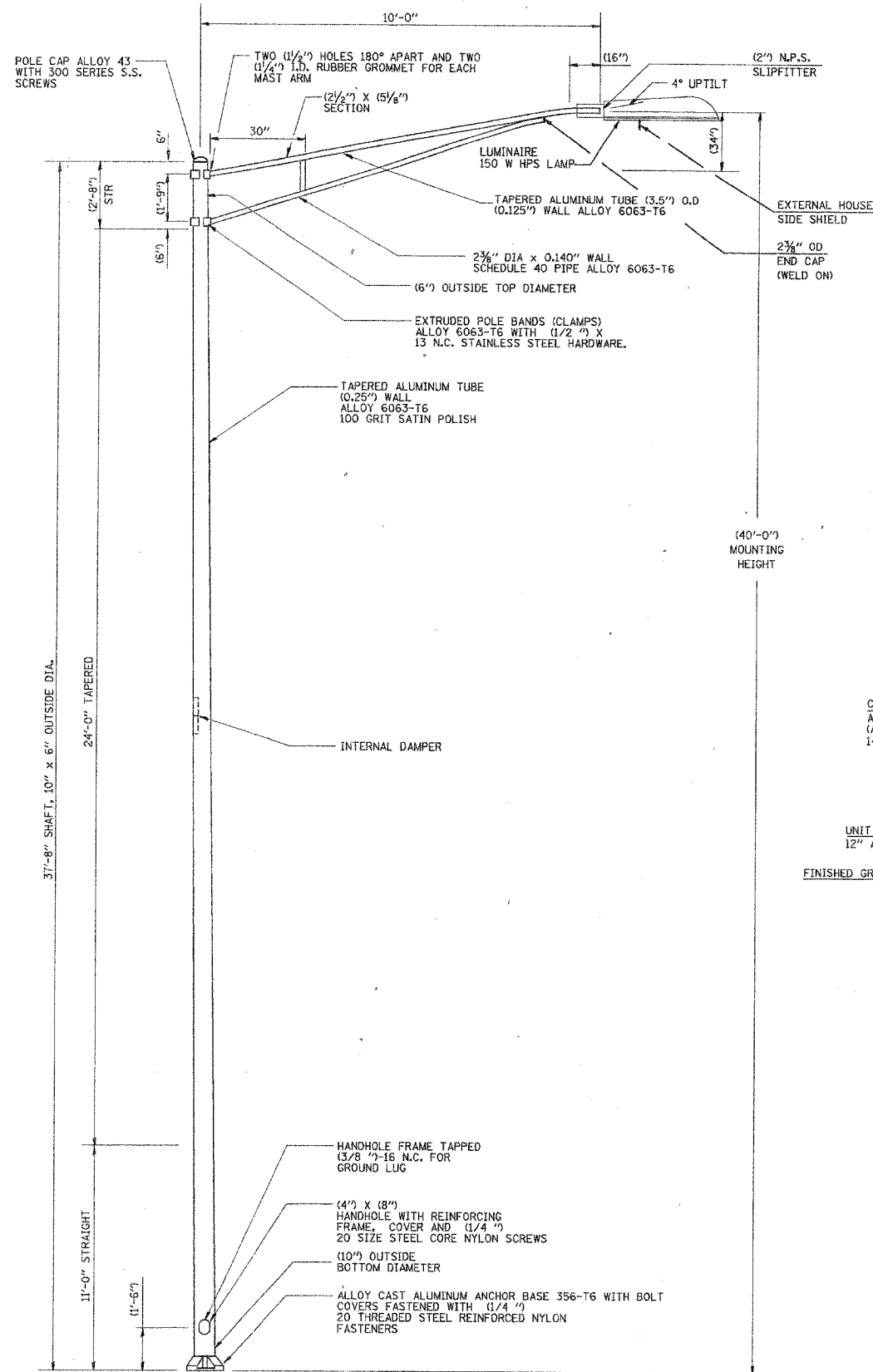
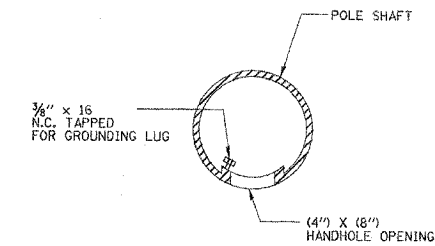


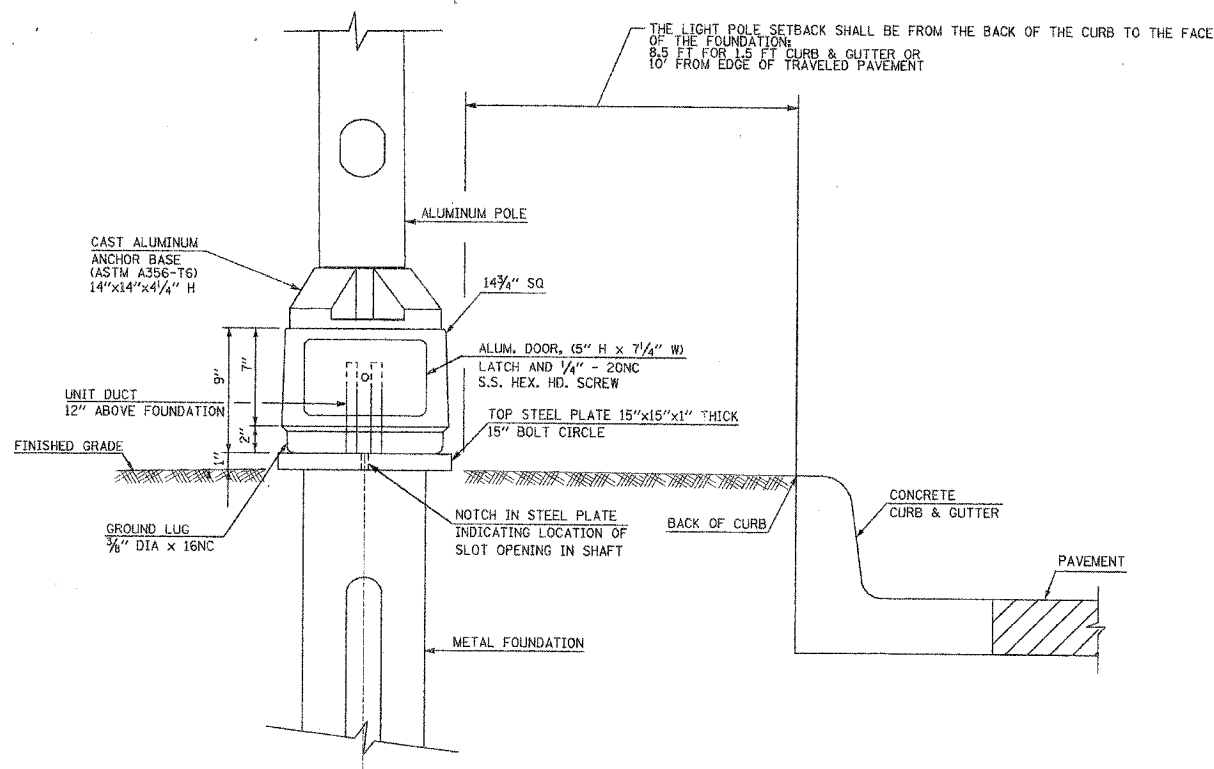
F.A. R.T.E.	SECTION	COUNTY	TOTAL SHEETS	SHEET NO.
	*	McHENRY	22	18
STA.	TO STA.			
FED. ROAD DIST. NO.	ILLINOIS FED. AID PROJECT			
* 04-00101-00-TL CONTRACT NO. 83844				



POSITION OF HANDHOLE IN RELATION TO TRAFFIC FLOW



HANDHOLE DETAIL  
(N.T.S.)



BREAKAWAY DEVICE, TRANSFORMER BASE  
MOUNTED ON A METAL FOUNDATION

NOTES

1. BOLT SLOTS SHALL BE (1/2" DIA x 1 1/8" LG) CENTERED ON BOLT CIRCLE.
2. TWO PIECE SHAFT WILL BE MATCH MARKED AND INTERCHANGEABLE BETWEEN DIFFERENT UNITS. STUD BOLT WILL BE (5/8" DIA. WITH NUT, FLATWASHER, AND LOCK WASHER. THERE WILL BE NO THREADS ON THE BOLT INSIDE THE POLE SHAFT.
3. LUMINAIRES ARE TO BE INSTALLED AS SOON AS POSSIBLE AFTER POLE ERECTION. THE POLE WILL NOT BE PAID FOR UNTIL THE LUMINAIRE IS INSTALLED.
4. THE LIGHT POLE WILL MEET AASHTO DESIGN CRITERIA.
5. THE DUCT SHALL EXTEND INTO POLE A MINIMUM OF (12") ABOVE THE BASE.

**Sunjoy Inc.**  
Area Lighting

212 TIMBERCREST DRIVE  
SCHAUMBURG, ILLINOIS  
60193-1572

McHENRY COUNTY DIVISION OF TRANSPORTATION  
CITY OF CRYSTAL LAKE  
INTERSECTION OF GOLF COURSE ROAD  
WITH ACKMAN ROAD

**LIGHT POLE, ALUMINUM 40 FT MOUNTING HEIGHT  
10 FT TRUSS ARM,  
BREAKAWAY DEVICE TRANSFORMER BASE**

SCALE: NONE DRAWN BY HKQ  
DATE: NOV. 23, 2005 CHECKED BY JS