

P.A. RTE.	SECTION	COUNTY	TOTAL SHEET SHEETS NO.
595	1 - 1	ROCK ISLAND	239 / 23
STA.	TO STA.		
FED. ROAD DIST. NO. 7	ILLINOIS	FED. AID PROJECT	CONTRACT # 84986

Chain INDIAN3 contains:  
50040 CUR INDIAN3-1 CUR INDIAN3-2 50041

Beginning chain INDIAN3 description

Point 50040 N 1,747,644.8382 E 2,188,027.6812 Sta 10+00.0000

Course from 50040 to PC INDIAN3-1 N 15° 34' 55.3267" E Dist 58.1255

Curve Data

Curve INDIAN3-1  
P.I. Station 10+70.5897 N 1,747,712.8335 E 2,188,046.6429  
Delta = 45° 07' 23.7757" (RT)  
Degree = 190° 59' 09.3542"  
Tangent = 12.4642  
Length = 23.6265  
Radius = 30.0000  
External = 2.4863  
Long Chord = 23.0206  
Mid. Ord. = 2.2960  
P.C. Station 10+58.1255 N 1,747,700.8274 E 2,188,043.2948  
P.T. Station 10+81.7519 N 1,747,718.9323 E 2,188,057.5131  
C.C. = N 15° 34' 55.3269" E  
Back = N 60° 42' 19.1026" E  
Chord Bear = N 38° 08' 37.2148" E

Course from PT INDIAN3-1 to PC INDIAN3-2 N 60° 42' 19.1026" E Dist 190.0672

Curve Data

Curve INDIAN3-2  
P.I. Station 13+27.3815 N 1,747,839.1192 E 2,188,271.7302  
Delta = 58° 06' 54.3564" (LT)  
Degree = 57° 17' 44.8062"  
Tangent = 55.5623  
Length = 101.4300  
Radius = 100.0000  
External = 14.3992  
Long Chord = 97.1376  
Mid. Ord. = 12.5868  
P.C. Station 12+71.8192 N 1,747,811.9325 E 2,188,223.2735  
P.T. Station 13+73.2492 N 1,747,894.6247 E 2,188,274.2412  
C.C. = N 60° 42' 19.1016" E  
Back = N 2° 35' 24.7452" E  
Chord Bear = N 31° 38' 51.9234" E

Course from PT INDIAN3-2 to 50041 N 2° 35' 24.7447" E Dist 48.8197

Point 50041 N 1,747,943.3946 E 2,188,276.4474 Sta 14+22.0689

Ending chain INDIAN3 description

Chain IHRPE contains:  
31 CUR IHRPE-1 32

Beginning chain IHRPE description

Point 31 N 1,747,712.7740 E 2,187,828.6279 Sta 27+96.0077

Course from 31 to PC IHRPE-1 S 84° 21' 29.4042" E Dist 88.2566

Curve Data

Curve IHRPE-1  
P.I. Station 29+18.4955 N 1,747,700.7323 E 2,187,950.5223  
Delta = 13° 37' 40.2492" (LT)  
Degree = 19° 59' 59.9743"  
Tangent = 34.2312  
Length = 68.1393  
Radius = 286.4790  
External = 2.0379  
Long Chord = 67.9788  
Mid. Ord. = 2.0235  
P.C. Station 28+84.2643 N 1,747,704.0976 E 2,187,916.4569  
P.T. Station 29+52.4036 N 1,747,705.4881 E 2,187,984.4214  
C.C. = N 88° 49' 40.3338" E  
Back = S 84° 21' 29.5416" E  
Ahead = N 82° 00' 50.2092" E  
Chord Bear = N 88° 49' 40.3338" E

Course from PT IHRPE-1 to 32 N 82° 00' 50.2058" E Dist 47.5964

Point 32 N 1,747,712.1008 E 2,188,031.5563 Sta 30+00.0000

Ending chain IHRPE description

Chain 30TH contains:  
24 4 3 2 9

Beginning chain 30TH description

Point 24 N 1,747,547.1176 E 2,189,402.9052 Sta 296+99.9997

Course from 24 to 4 N 1° 03' 59.6477" E Dist 100.8700

Point 4 N 1,747,647.9701 E 2,189,404.7828 Sta 298+00.8697

Course from 4 to 3 N 1° 03' 59.6203" E Dist 199.1197

Point 3 N 1,747,847.0553 E 2,189,408.4892 Sta 299+99.9894

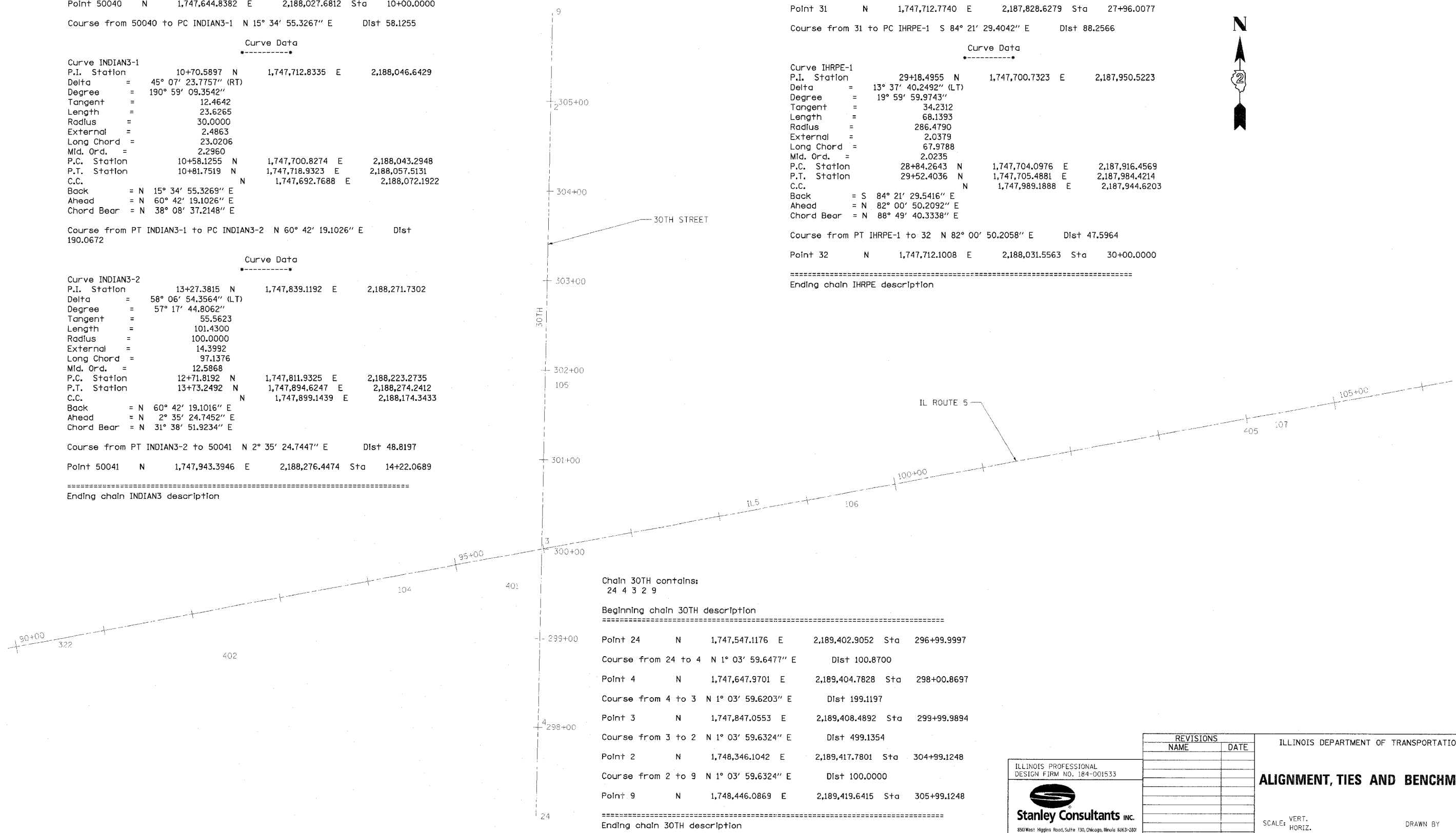
Course from 3 to 2 N 1° 03' 59.6324" E Dist 499.1354

Point 2 N 1,748,346.1042 E 2,189,417.7801 Sta 304+99.1248

Course from 2 to 9 N 1° 03' 59.6324" E Dist 100.0000

Point 9 N 1,748,446.0869 E 2,189,419.6415 Sta 305+99.1248

Ending chain 30TH description



REVISIONS	
NAME	DATE

ILLINOIS PROFESSIONAL  
DESIGN FIRM NO. 184-001533  
**Stanley Consultants inc.**  
850 West Higgins Road, Suite 130, Chicago, Illinois 60639-2802  
www.stanleygroup.com

ILLINOIS DEPARTMENT OF TRANSPORTATION  
**ALIGNMENT, TIES AND BENCHMARKS**  
SCALE: VERT. \_\_\_\_\_  
HORIZ. \_\_\_\_\_  
DATE \_\_\_\_\_ DRAWN BY \_\_\_\_\_  
CHECKED BY \_\_\_\_\_

**ALIGNMENT, TIES AND BENCHMARKS**