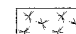


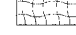

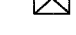



F.A. RTE.	SECTION	COUNTY	TOTAL SHEET SHEETS, NO.
595	1 - 1	ROCK ISLAND	239 / 72
STA 297+00.00		TO STA 303+00.00	
FED. ROAD DIST. NO.	ILLINOIS	FED. AID PROJECT	
CONTRACT # 84986			

**LEGEND**

-  SEEDING, CL1 (MODIFIED)
-  SODDING
-  RIPRAP
-  EROSION CONTROL BLANKET
-  HEAVY DUTY EROSION CONTROL BLANKET
-  INLET AND PIPE PROTECTION
-  PERIMETER EROSION BARRIER



STONE DUMPED RIPRAP, CLA4  
 FILTER FABRIC FOR USE WITH  
 RIPRAP-6'X45'  
 STA 302+05, 45' LT TO  
 STA 302+50, 40' LT

SEEDING, CL1 (MODIFIED) WITH  
 EROSION CONTROL BLANKET  
 BEHIND RETAINING WALL

DATE: \_\_\_\_\_

BY: \_\_\_\_\_

PROJECT NO.: \_\_\_\_\_

DATE: \_\_\_\_\_

BY: \_\_\_\_\_

PROJECT NO.: \_\_\_\_\_

DATE: \_\_\_\_\_

BY: \_\_\_\_\_

PROJECT NO.: \_\_\_\_\_

DATE: \_\_\_\_\_

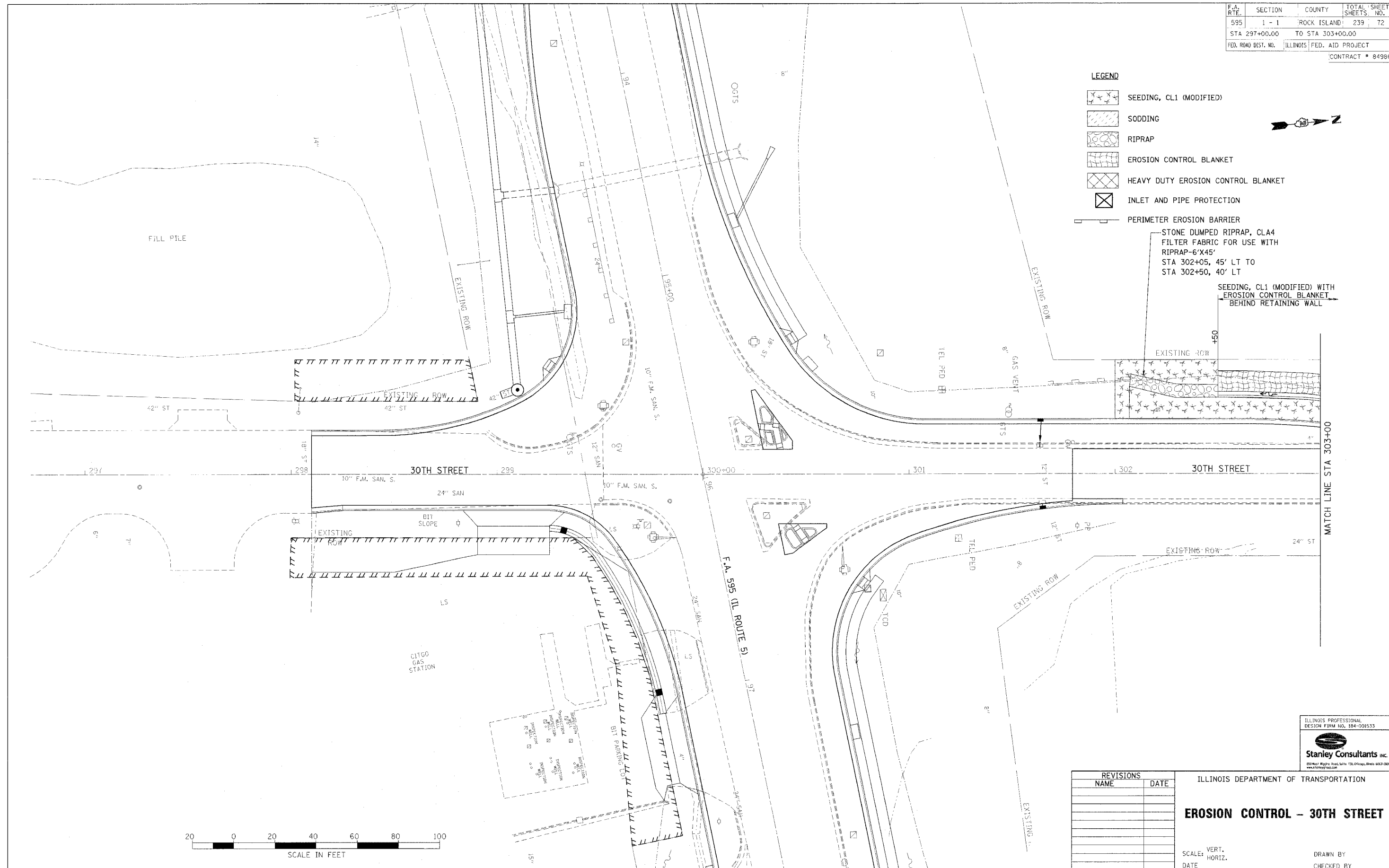
BY: \_\_\_\_\_

PROJECT NO.: \_\_\_\_\_

DATE: \_\_\_\_\_

BY: \_\_\_\_\_

PROJECT NO.: \_\_\_\_\_



REVISIONS	NAME	DATE

ILLINOIS DEPARTMENT OF TRANSPORTATION

**EROSION CONTROL - 30TH STREET**

SCALE: VERT. \_\_\_\_\_  
 HORIZ. \_\_\_\_\_

DATE: \_\_\_\_\_

DRAWN BY: \_\_\_\_\_  
 CHECKED BY: \_\_\_\_\_

