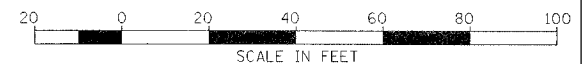
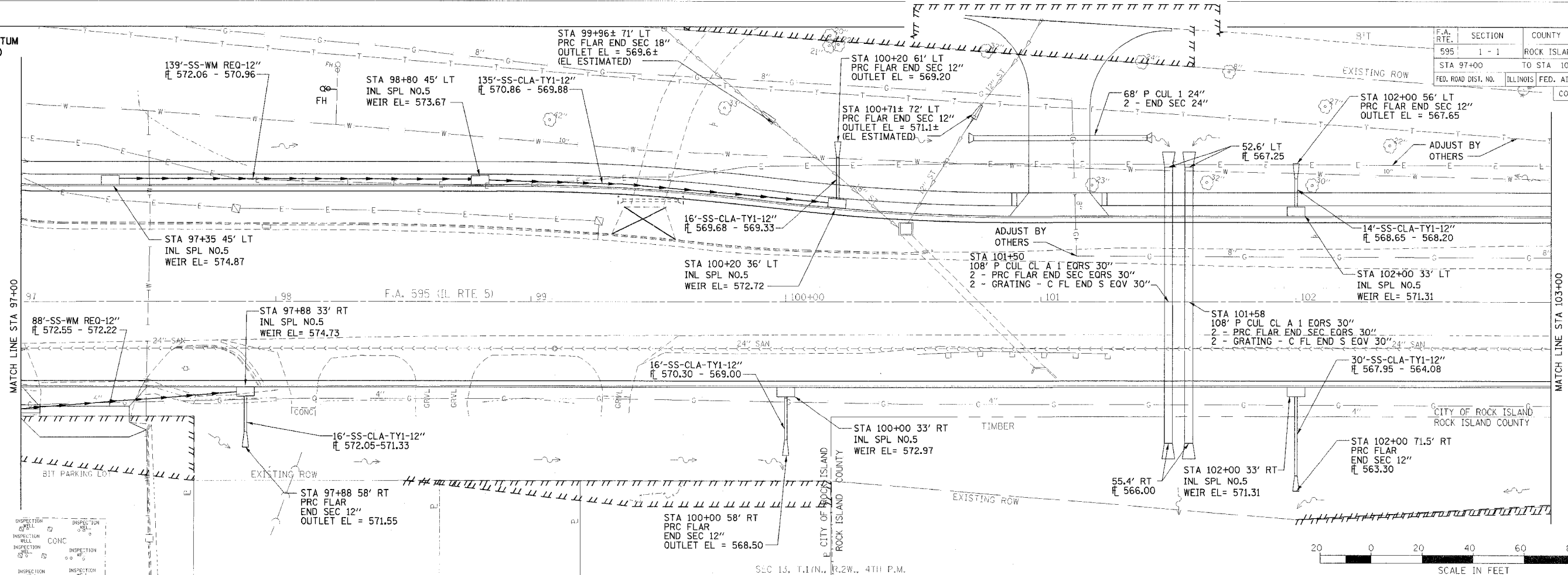
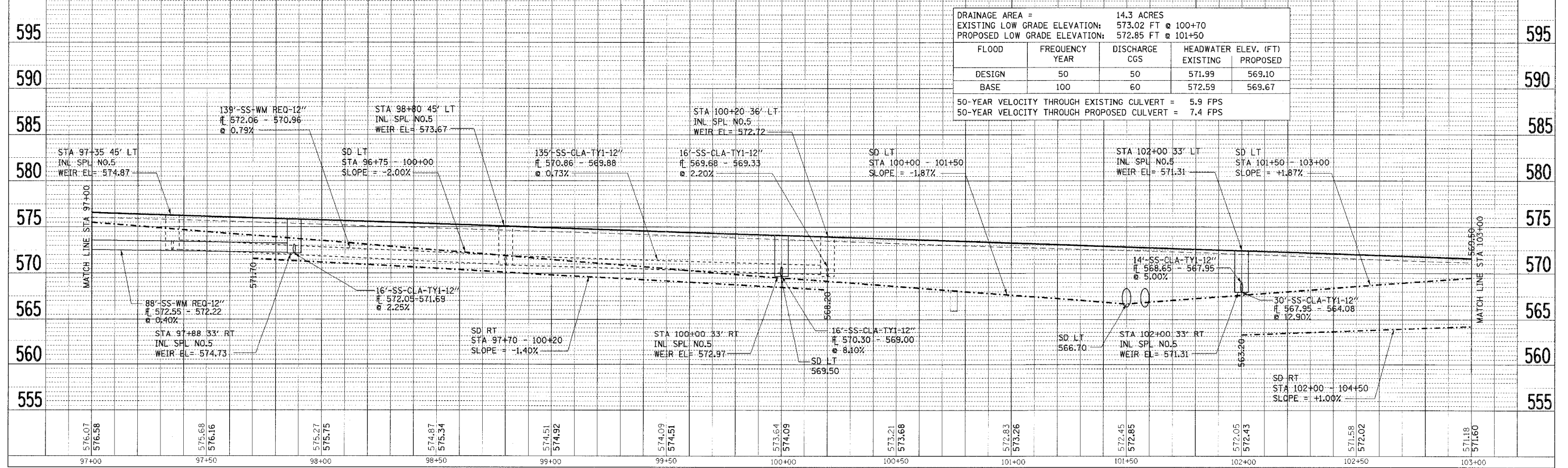


U.S. G.S. DATUM
5TH GA(1929)

F.A. RTE.	SECTION	COUNTY	TOTAL SHEETS	SHEET NO.
595	1 - 1	ROCK ISLAND	239	78
STA 97+00		TO STA 103+00		
FED. ROAD DIST. NO.		ILLINOIS FED. AID PROJECT		
CONTRACT = 84986				



DRAINAGE AREA =		14.3 ACRES	
EXISTING LOW GRADE ELEVATION:		573.02 FT @ 100+70	
PROPOSED LOW GRADE ELEVATION:		572.85 FT @ 101+50	
FLOOD DESIGN BASE	FREQUENCY YEAR	DISCHARGE CGS	HEADWATER ELEV. (FT) EXISTING PROPOSED
50	50	50	571.99 569.10
100	100	60	572.59 569.67
50-YEAR VELOCITY THROUGH EXISTING CULVERT = 5.9 FPS			
50-YEAR VELOCITY THROUGH PROPOSED CULVERT = 7.4 FPS			



DRAINAGE, UTILITIES AND WATERMAIN IMP SHEETS - F.A. 595 (IL RTE 5)