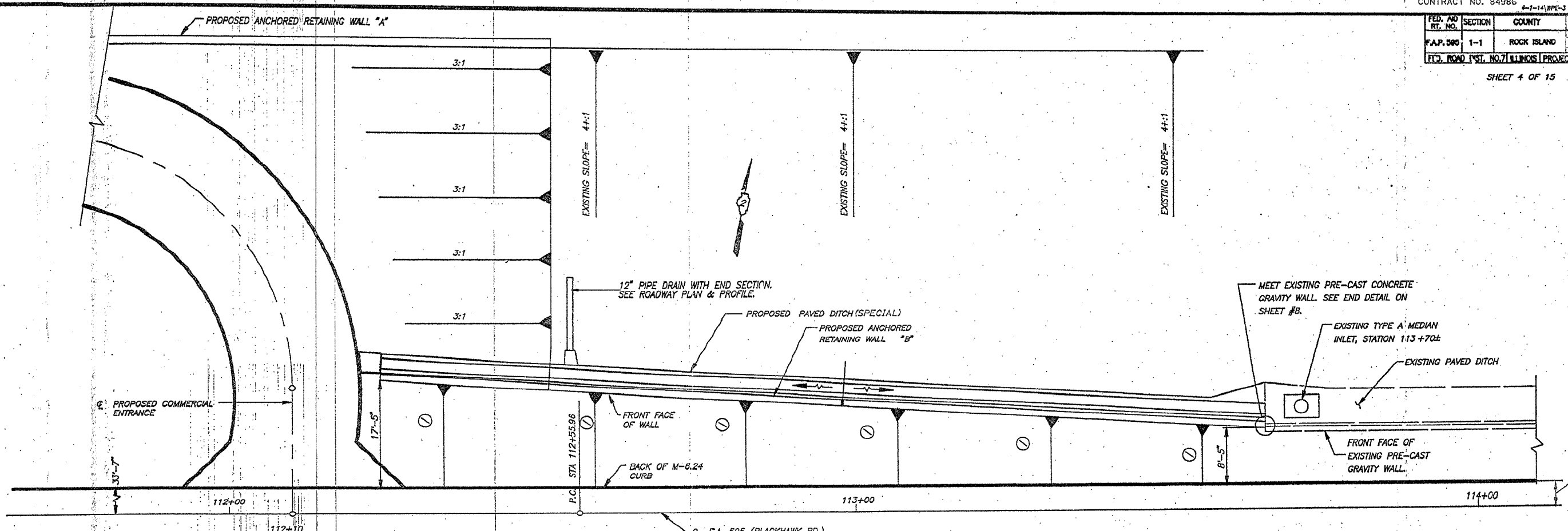


CONTRACT NO. 84986

FED. AID RT. NO.	SECTION	COUNTY	TOTAL SHEETS	SHEET NO.
F.A.P. 585	1-1	ROCK ISLAND	229	103

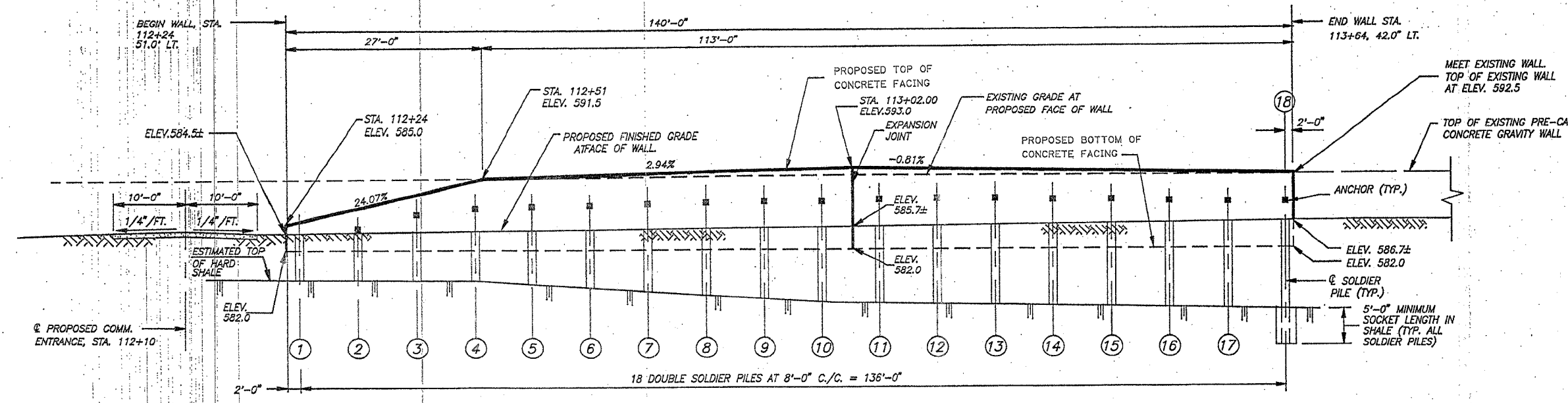
FT.2. ROAD DIST. NO. 7 ILLINOIS PROJECT

SHEET 4 OF 15



PLAN
 SLOPE = 3/4" / FT.

NOTE:
 FOR TYPICAL WALL SECTIONS AND DETAILS,
 SEE SHEETS #6, #7, AND #8.



ELEVATION

* APPEARANCE OF PROPOSED CONCRETE FACING SHALL
 MATCH EXISTING CONCRETE GRAVITY WALL. SEE
 SPECIAL PROVISIONS.

WALL PLAN AND ELEVATION
 RETAINING WALL "B"
 F.A. RTE. 595 SECTION 1-1
 ROCK ISLAND COUNTY