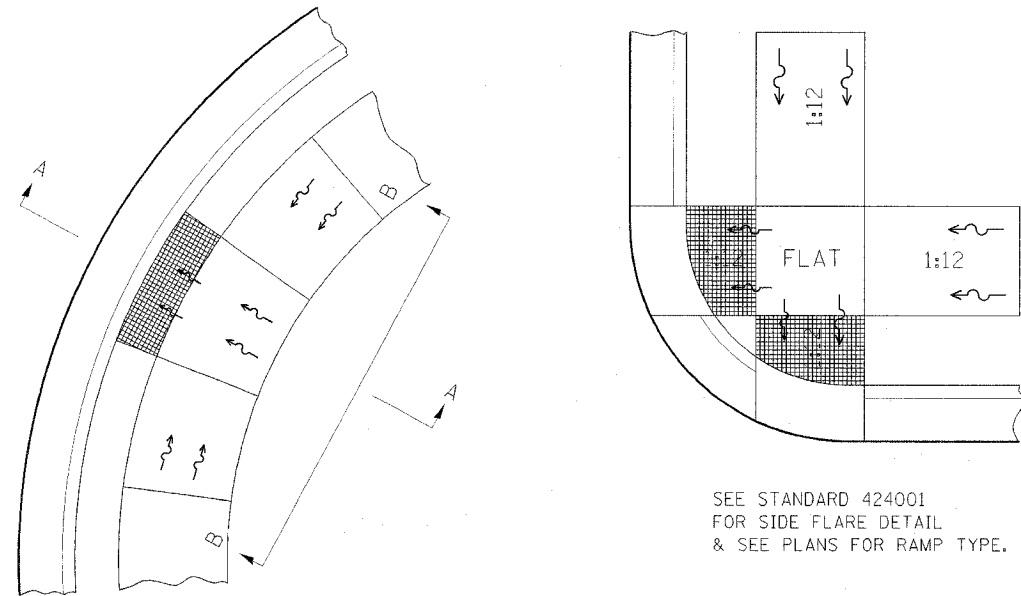
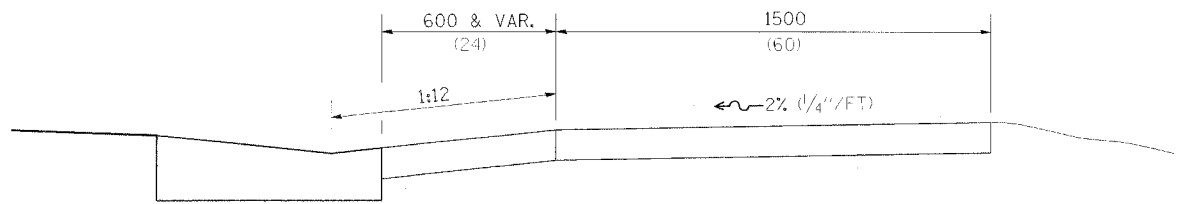


DISABLED RAMP DETAIL

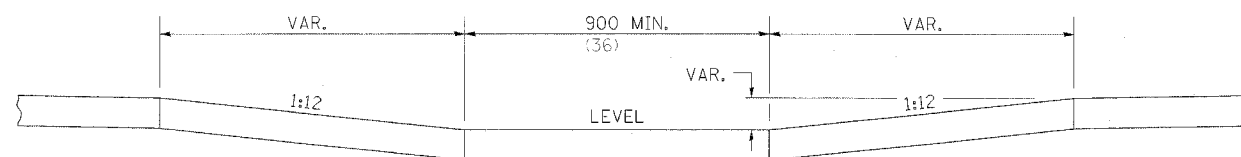


SEE STANDARD 424001 FOR SIDE FLARE DETAIL & SEE PLANS FOR RAMP TYPE.

ALL DIMENSIONS ARE IN MILLIMETERS (INCHES) UNLESS OTHERWISE NOTED.



SECTION A-A



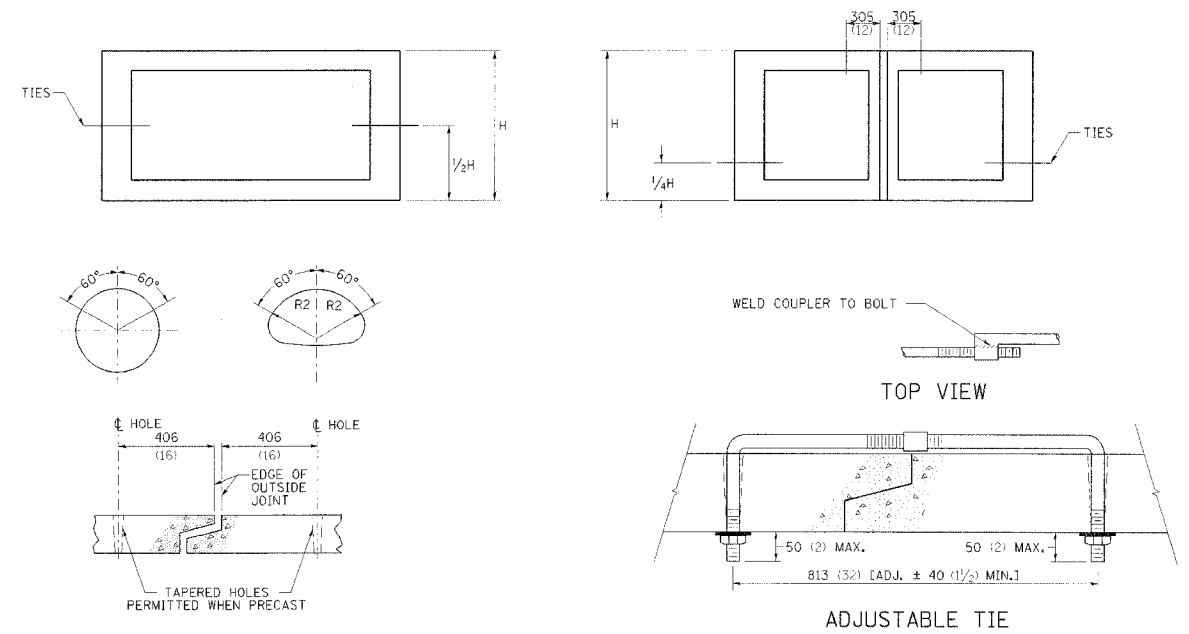
SECTION B-B

NOTES : THIS DETAIL TO BE USED IN CONJUNCTION WITH STATE STANDARD 424001. THE MAXIMUM ALLOWABLE CROSS SLOPE FOR SIDEWALK IS 2% (1/4\"/>

MECHANICAL JOINTS FOR CONCRETE PIPE AND BOX CULVERTS

| | | | | |
|-------------------|----------|------------------|--------------|-----------|
| F.A. RTE. | SECTION | COUNTY | TOTAL SHEETS | SHEET NO. |
| 595 | 1 - 1 | ROCK ISLAND | 239 | 172 |
| STA | TO STA | | | |
| FED. RD DIST. NO. | ILLINOIS | FED. AID PROJECT | | |
| CONTRACT # 84986 | | | | |

THE CULVERT TIES SHALL BE INCLUDED IN THE COST OF THE CONCRETE PIPE CULVERTS OR THE PRECAST CONCRETE BOX CULVERT. THE MECHANICAL TIES SHALL BE ON THE OUTSIDE OF THE CULVERT. THE NUTS AND WASHERS SHALL BE PLACED ON THE INSIDE OF THE CULVERT AND COVERED WITH MASTIC JOINT SEALER CONFORMING TO ARTICLES 1055 OR 1056 IN THE STANDARD SPECIFICATIONS FOR ROAD AND BRIDGE CONSTRUCTION.



| BOX CULVERT METERS (FEET) | PIPE SIZE MILLIMETERS (INCHES) | THREAD DIAMETER |
|---------------------------|--------------------------------|-----------------|
| | 300 (12) | 16 (5/8) |
| | 380 (15) | 16 (5/8) |
| | 450 (18) | 16 (5/8) |
| | 530 (21) | 19 (3/4) |
| | 600 (24) | 19 (3/4) |
| | 680 (27) | 19 (3/4) |
| | 760 (30) | 19 (3/4) |
| 0.9x0.6 (3x2) | 830 (33) | 25 (1) |
| 0.9x0.9 (3x3) | 910 (36) | 25 (1) |
| 1.2x0.6 (4x2) | 1060 (42) | 25 (1) |
| 1.2x0.9 (4x3) | 1210 (48) | 25 (1) |
| 1.2x1.2 (4x4) | 1370 (54) | 25 (1) |
| 1.5x0.9 (5x3) | 1520 (60) | 25 (1) |
| 1.8x1.2 (6x4) | 1670 (66) | 25 (1) |
| 1.8x1.5 (6x5) | 1820 (72) | 25 (1) |
| 1.8x 2 (6x 6) | 1980 (78) | 25 (1) |
| 2.1x 2 (7x 6) | 2130 (84) | 25 (1) |
| 2.4x 2 (8x 6) | 2280 (90) | 25 (1) |
| 2.7x 2 (9x 6) | 2430 (96) | 25 (1) |
| 3.0x 2 (10x 6) | 2590 (102) | 25 (1) |
| | 2740 (108) | 25 (1) |
| | 3040 (120) | 35 (1 1/2) |
| | 3350 (132) | 35 (1 1/2) |
| 3.4x 2 (11x 6) | 3500 (138) | 35 (1 1/2) |
| AND GREATER | AND GREATER | |

- NOTES:
- HOLES SHALL BE CAST-IN OR DRILLED 400 (16) FROM OUTSIDE EDGE OF JOINT.
 - NUTS AND WASHERS ARE NOT REQUIRED ON INSIDE OF 675 (27) DIAM. PIPE OR LESS.
 - TIES ARE NOT REQUIRED FOR BELL PIPE 600 (24) AND SMALLER. ON OTHER SIZES TIE MAY BE INSERTED FROM INSIDE.
 - CUT THREADS MAY BE USED IF WASHER AND NUT ARE USED.
 - PIPE SIZE LISTED IS INSIDE DIAM. OF ROUND PIPE OR EQUIVALENT DIAM. OF PIPE ARCH OR ELLIPTICAL.
 - GALVANIZING OF TIES IS REQUIRED.
 - ALL DIMENSIONS ARE IN MILLIMETERS (INCHES) UNLESS OTHERWISE NOTED.

