

ROUTE NO.	SECTION	COUNTY	TOTAL SHEETS	SHEET NO.
5102	*	WINNEBAGO	18	1
FED. ROAD DIST. NO. 7				
ILLINOIS FED. AID PROJECT BHM-5099(64)				
* 03-00336-00-BR				

STATE OF ILLINOIS
DEPARTMENT OF TRANSPORTATION
DIVISION OF HIGHWAYS

**PLANS FOR PROPOSED
BRIDGE REHABILITATION PROJECT
F.A.U. ROUTE 5102 (CENTRAL AVENUE)
COUNTY HIGHWAY 13
OVER NORTH FORK OF KENT CREEK**

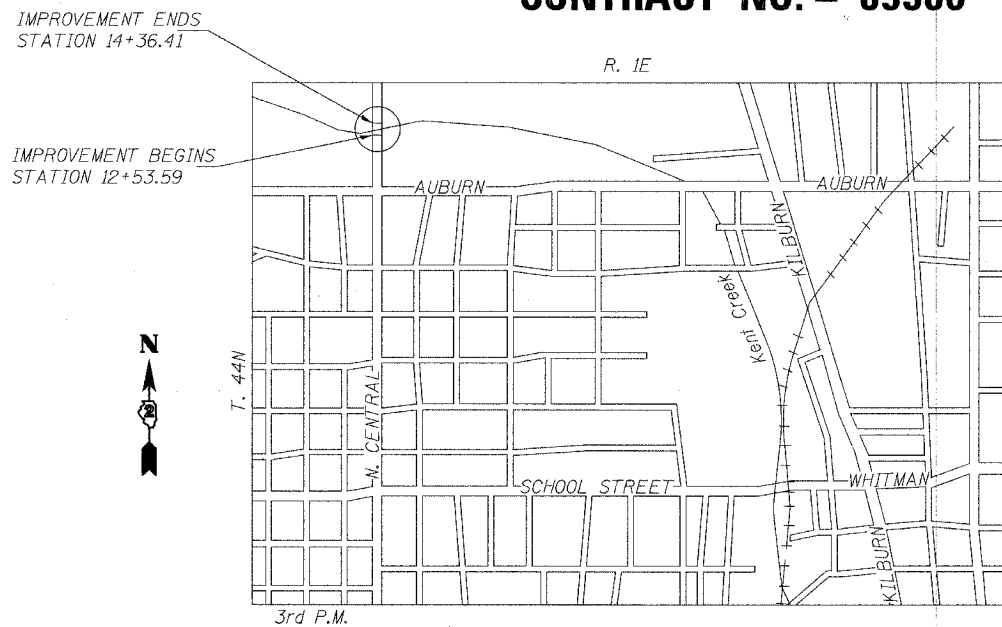
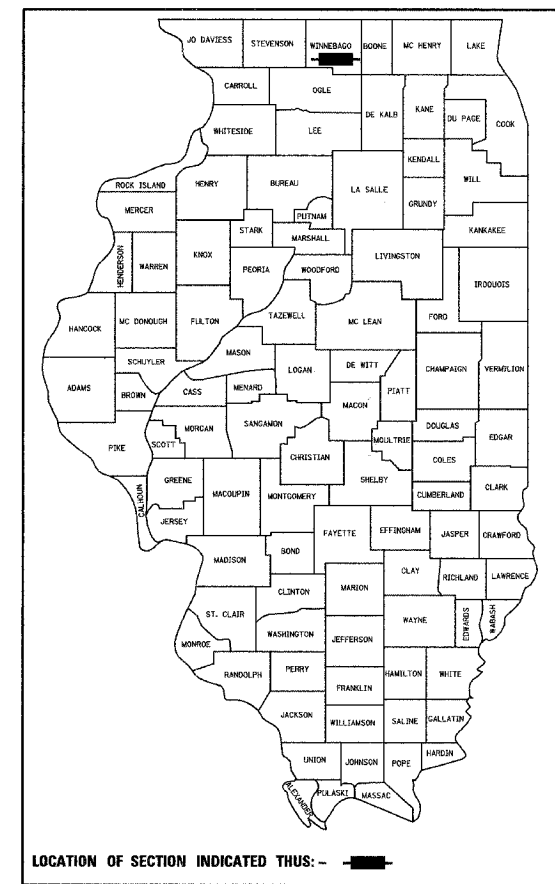
SECTION 03-00336-00-BR
WINNEBAGO COUNTY
PROJECT BHM-5099 (64)
JOB NUMBER - C-92-075-05
CONTRACT NO. - 85380

INDEX OF SHEETS

- TITLE SHEET
- GENERAL NOTES & QUANTITIES
- DEMOLITION PLAN
- GENERAL PLAN & PROFILE
- GENERAL PLAN & ELEVATION
- CROSS SECTION, GENERAL NOTES & DETAILS
- SUPERSTRUCTURE REPAIR
- SUBSTRUCTURE DEMOLITION
- SUPERSTRUCTURE DETAILS
- CONCRETE PARAPET & ALUMINUM RAILING
- ALUMINUM RAILING DETAILS
- SUBSTRUCTURE REPAIRS
- SUBSTRUCTURE REPAIRS
- SOUTH PIER COLUMN REPAIR DETAILS
- SLOPEWALL REPAIR DETAILS
- BAR SPLICE ASSEMBLY DETAILS
- TRAFFIC CONTROL PLAN
- TRAFFIC CONTROL PLAN

LIST OF STANDARDS

- | | |
|-----------|--|
| 280001-02 | TEMPORARY EROSION CONTROL SYSTEMS |
| 420001-06 | PAVEMENT JOINTS |
| 420401-05 | BRIDGE APPROACH PAVEMENT |
| 420701-01 | PAVEMENT FABRIC |
| 606001-02 | CONCRETE CURB TYPE B AND COMBINATION CONCRETE CURB AND GUTTER |
| 630001-06 | STEEL PLATE BEAM GUARDRAIL |
| 630301-03 | SHOULDER WIDENING FOR TYPE 1 (SPECIAL) GUARDRAIL TERMINALS |
| 631031-05 | TRAFFIC BARRIER TERMINAL, TYPE 6 |
| 635006-02 | REFLECTOR AND TERMINAL MARKER PLACEMENT |
| 635011-01 | REFLECTOR MARKER AND MOUNTING DETAILS |
| 701601-04 | URBAN LANE CLOSURE, MULTILANE, 1W OR 2W WITH NONTRAVERSABLE MEDIAN |
| 702001-06 | TRAFFIC CONTROL DEVICES |
| 780001-01 | TYPICAL PAVEMENT MARKINGS |



LOCATION PLAN

SCALE OF LAYOUT
NET LENGTH = 182.82 FEET (0.035 MI)

TRAFFIC DATA

HIGHWAY CLASSIFICATION: MINOR ARTERIAL (URBAN)
2006 ADT: 10,400 3% TRUCKS
DESIGN SPEED: 40 MPH
POSTED SPEED: 40 MPH

PROPOSED IMPROVEMENTS

CONCRETE BRIDGE DECK REPAIRS, MICROSILICA CONCRETE OVERLAY, REPLACEMENT OF EXPANSION JOINTS, REPLACEMENT OF ABUTMENT BACK WALLS, REPLACEMENT OF BRIDGE PARAPET, REPLACEMENT OF ABUTMENT BEARINGS, CONCRETE SLOPE WALL REPAIRS, SCOUR REMEDIATION, BRIDGE DECK DRAIN EXTENSIONS, AND BRIDGE APPROACH PAVEMENT REMOVAL AND REPLACEMENT. EXISTING AND NEW STRUCTURE NUMBER 101-3023.

TOLL FREE
JOINT UTILITY LOCATING INFORMATION FOR EXCAVATORS (J.U.L.I.E.) TELEPHONE NUMBER 1-800-892-0123

UTILITY NOTE
THE LOCATIONS OF THOSE BURIED AND ABOVEGROUND UTILITIES SHOWN ARE APPROXIMATE, ARE SHOWN FOR CONTRACTOR INFORMATIONAL USE ONLY, AND ARE NOT TO BE REFERENCED FOR CONSTRUCTION PURPOSES. THE IMPLIED PRESENCE OR ABSENCE OF UTILITIES IS NOT TO BE CONSTRUED BY THE OWNER, ENGINEER, CONTRACTOR, OR SUBCONTRACTORS TO BE AN ACCURATE AND COMPLETE REPRESENTATION OF UTILITIES THAT MAY OR MAY NOT EXIST ON THE CONSTRUCTION SITE. BURIED AND ABOVEGROUND UTILITY LOCATION, IDENTIFICATION, AND MARKING ARE THE SOLE RESPONSIBILITY OF THE CONTRACTOR. REROUTING, DISCONNECTION, PROTECTION, ETC. OF ANY UTILITIES MUST BE COORDINATED AMONG THE CONTRACTOR, UTILITY COMPANY, AND OWNER. SITE SAFETY, INCLUDING THE AVOIDANCE OF HAZARDS, ASSOCIATED WITH BURIED AND ABOVEGROUND UTILITIES REMAIN THE SOLE RESPONSIBILITY OF THE CONTRACTOR.

APPROVED *James E. Zie* 7/20/06
COUNTY ENGINEER

PASSED *Feb 2 20 06*
DISTRICT ENGINEER OF LOCAL ROADS & STREETS

APPROVED FOR BIDDING *Feb 2 20 06*
DISTRICT ENGINEER

STATE OF ILLINOIS
DEPARTMENT OF TRANSPORTATION

FRANCIS L. HANSON
669-04455
REGISTERED PROFESSIONAL ENGINEER
STATE OF ILLINOIS

DATE SIGNED: 1/30/2006
LIC. EXP. DATE: 11/30/2007

Corporate License Number 184-001-084
© Copyright Hanson Professional Services Inc. 2005

HANSON

JOB NO. 03R1809
DATE 4/28/06

12:09:42 PM 11/07/06
07:25:22 AM 12/09/06
R:\03005031\03005031\03005031\Struct\Sheet\5-001711.dgn

LAYOUT: F.L.N. 11/07/06
DRAWN: M.W. 12/09/06
REVIEWED: F.L.N. 01/20/06