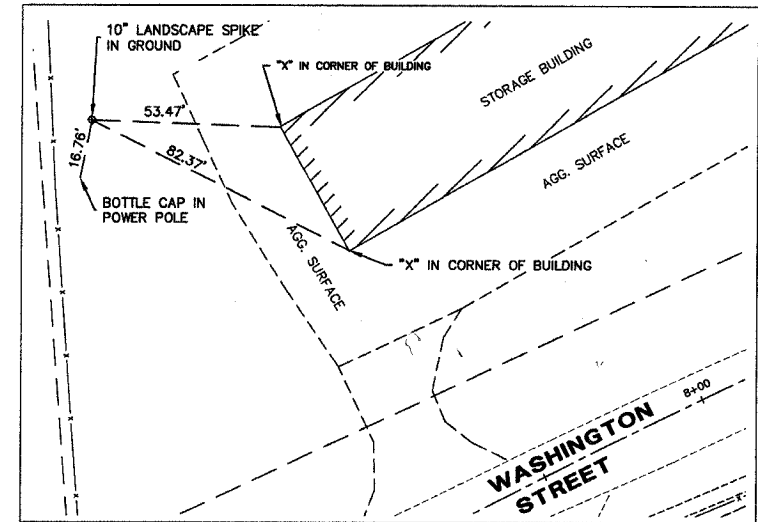
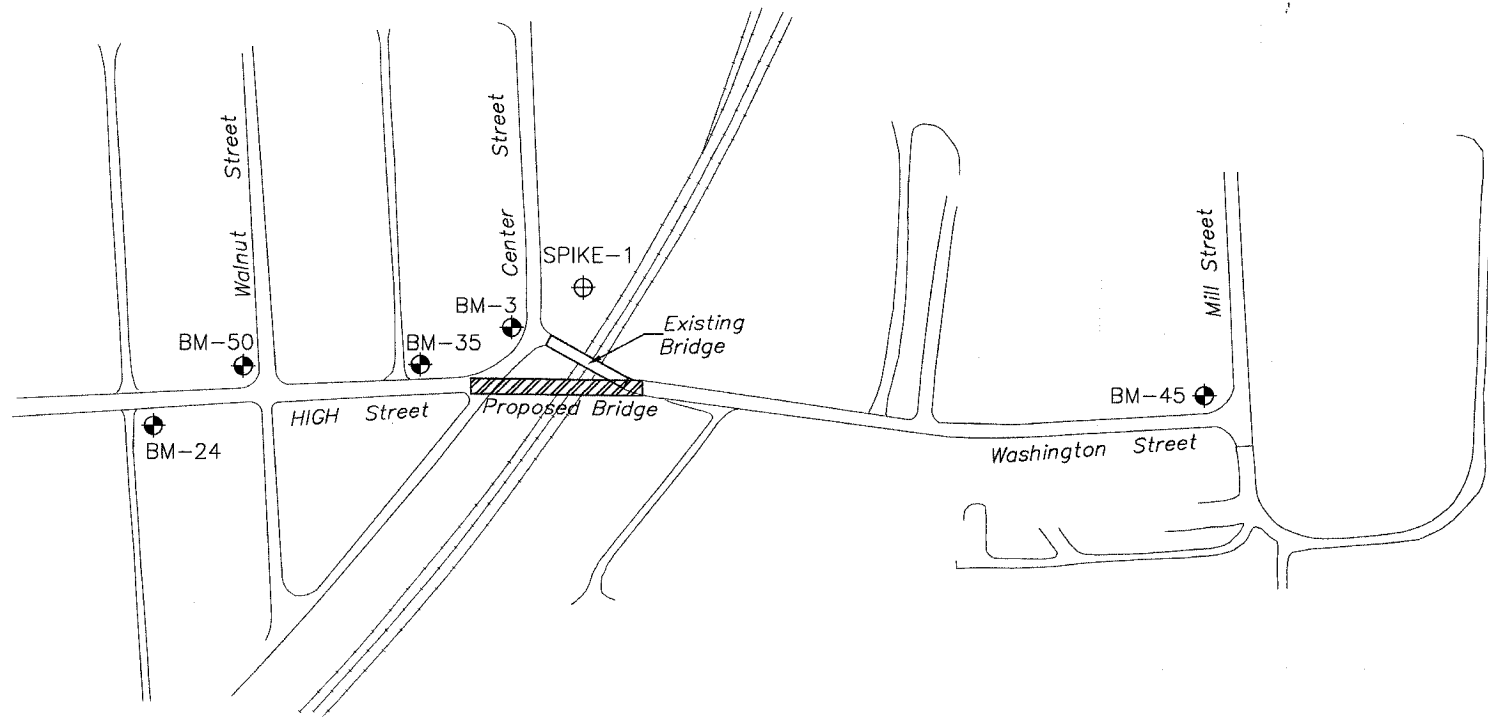


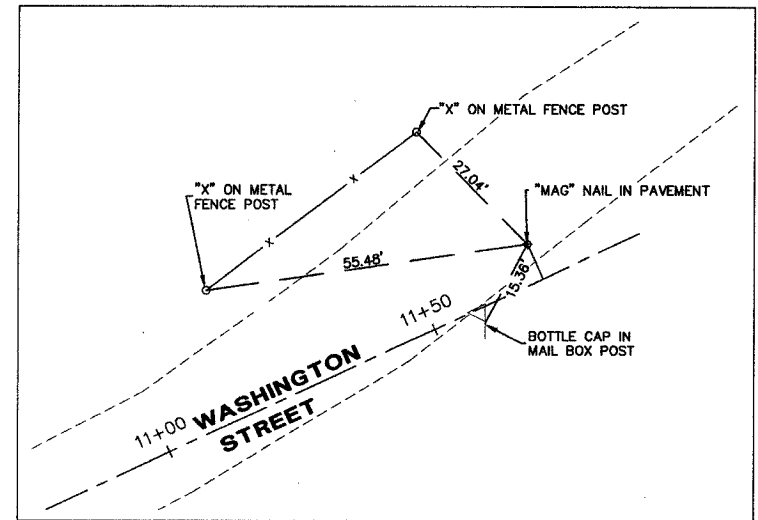
ROUTE NO.	SECTION	COUNTY	TOTAL SHEETS	SHEET NO.
MS 1090	*	BUREAU COUNTY	27	8
SECTION 01-00008-00-BR		ILLINOIS	FED. AID PROJECT	



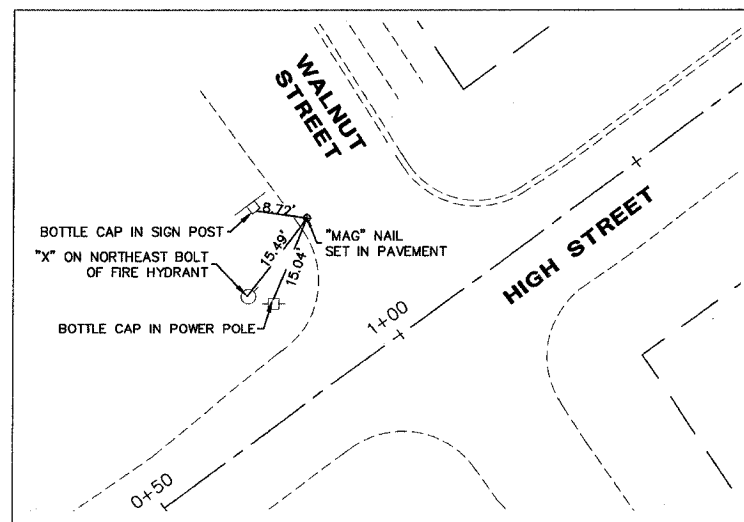
CONTROL POINT #3  
STA 6+83.61 -- 149.89' LT

BENCHMARK SCHEDULE

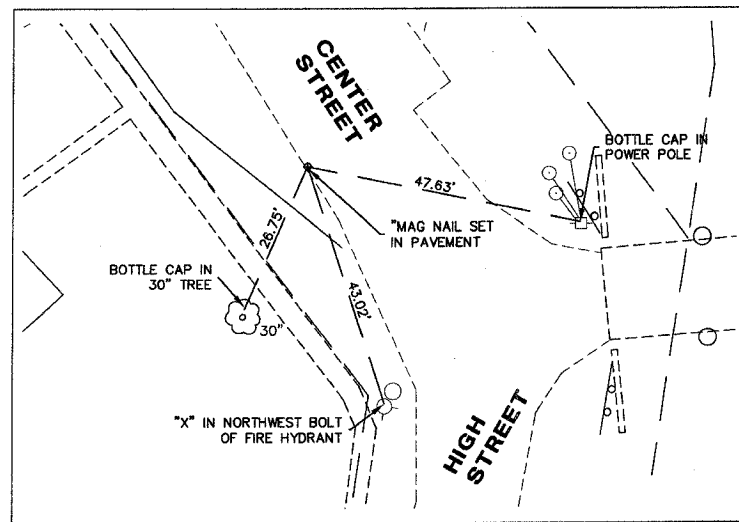
BENCHMARK	LOCATION	U.S.G.S. ELEVATION (FT.)
BM-1 (USGS)	EAST MAIN AND PROVIDENCE	753.00
BM-3	F.H. AT CENTER AND HIGH	785.32
BM-24	Head of R.R. SPIKE IN PP AT SE CORNER OF HIGH AND 1ST ALLEY E. OF PINE	796.83
BM-35	Head of R.R. SPIKE IN PP AT NE CORNER OF HIGH AND 2ND ALLEY E. OF PINE	787.00
BM-45	"M" IN MUELLER ON F.H. AT NW CORNER OF MILL AND WASHINGTON	781.90
BM-50	"M" IN MUELLER ON F.H. AT NW CORNER OF WALNUT AND HIGH STREET	795.39



CONTROL POINT #4  
STA 11+70.43 -- 6.44' LT



CONTROL POINT #1  
STA 0+99.00 -- 25.69' LT



CONTROL POINT #2  
STA 4+66.42 -- 108.93' LT

REVISIONS	
NAME	DATE

**ALIGNMENT TIES AND BENCHMARKS**

SCALE: NONE DRAWN BY: GRR  
DATE: JANUARY 6, 2006 CHECKED BY: JAK/SAS

**McCLURE ENGINEERING ASSOCIATES, INC.**

1138 COLUMBUS STREET OTTAWA, ILLINOIS 61350  
PHONE (815) 433-2080 FAX (815) 433-5930  
DESIGN FIRM LICENSE: ILLINOIS #184-000616  
COPYRIGHT 2006 BY McCLURE ENGINEERING ASSOCIATES, INC.

FILE: H:\DRG\BUREAU\HIGH ST. BRIDGE\BENCHMARKS\TIES.DWG